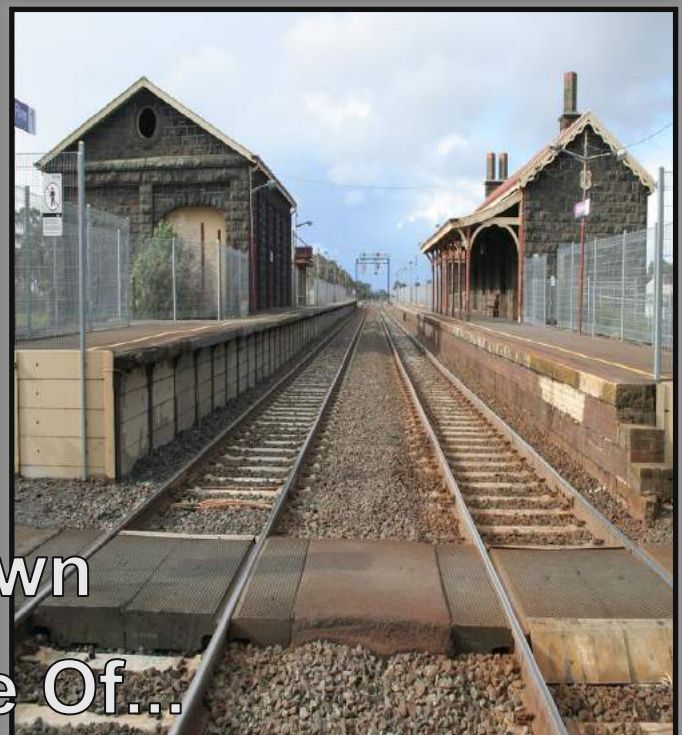




Global
Infrastructure
Group

Issue 18 2019

GLOBAL NEWS



In this edition....

- ◆ Project News
- ◆ Safety Stand Down
- ◆ A Day In The Life Of...

Foreword

Welcome to another edition of the Global News Magazine, and I am sure you will all agree that this publication is a valuable addition to the Global Infrastructure Group and a fantastic mechanism by which the different organisations can keep up to date with what is going on across the GIG Family.

It is evident from reading the updates from across the group in this edition that our project teams are involved in the delivery of some truly exceptional works. All being delivered safely across various climates, demanding environments and not to mention time zones!

This is a testimony to our behaviours, experience and in particular, our people who support and continue to enhance our service delivery across the group. Whilst enjoying our successes there is always a need to continue improving our business and our people so that we will always be considered for key opportunities and become a partner of choice to our clients.

Our long term strategy will continue to ensure that we invest in and develop our staff to enable us to deliver tomorrows expectations, today. Global Rail has always empowered its people to grow, develop and achieve their full potential whilst providing the platform and support to enable this growth potential. We take our responsibilities seriously and operate a policy that incorporates a programme of continuous improvement and on-going staff education and development.

I am pleased to see that our Apprenticeship and on-going staff education programmes are going from strength to strength and this investment will continue as we seek to develop the next group of young professionals into the business. These programmes cannot be overstated in their importance to the future of the Group and it is very satisfying to see how a number of our staff that have been through these schemes are now an integral and influential part of our Project Delivery Teams across the business.

Of course, none of the above and the success that the Company has experienced to date could be fully appreciated without the full support, hard work and commitment of our staff, supply chain and partners who often face difficult challenges, work through adverse weather conditions and often sacrificing time with their families to ensure our business objectives are delivered professionally, safely and in a consistent manner. We are particularly proud of our history to date and in particular how our wider team continues to execute our objectives and responsibilities in such a positive, pro-active and inclusive way. This is real testimony of our commitment to our core principles and culture enhanced by working together and with others to achieve our defined objectives.

It is vitally important that we as the wider GIG family recognise the stresses/strains that our staff can sometimes experience, both in and outside of work and I am pleased that we have now launched our Employee Assistance Programme (EAP) in the UK. This is a confidential counselling and information service to assist staff with personal or work-related problems that may affect health, wellbeing and work-life balance.

Our safety record once again is testament to the fantastic work our HSQE team, management, safety coaches and all our people do in a very professional and diligent manner throughout the year to create and foster a working ethos at GIG that is second to none.

We are now going in to a particularly busy period across the group both in terms of tendering opportunities and on secured projects and this is where historically we are able to excel as a business as we work collaboratively as part of a greater team in a responsible, passionate and professional manner to collectively deliver a first class service to our clients.

Thanks to the commitment, determination and dedication of you all the Group is going from strength to strength and as we seek to increase our delivery capabilities across the business we are well positioned to improve our delivery capabilities in these competitive times.

Hope you enjoy the read

Jim Cuell



Passionate

Committed in heart and mind to whole-heartedly embrace our core values and culture, without exception.



People

Growing our organisation from within, promoting and empowering our people, inspiring them to be the best they can be.



Professional

At all times we act with integrity, providing quality service, reliably and responsibly.



Teamwork

Working collaboratively whilst supporting and respecting each other's views.



Responsible

To consistently deliver quality, on time, safely and to budget whilst protecting our communities and the environment.



Project Updates

JEMENA / ZINFRA

Jemena owns and operates a portfolio of energy and water transportation assets across the east coast of Australia. With more than \$11 billion worth of major utility infrastructure, they supply millions of households and businesses with these essential services every day.

Global Rail Australia were engaged by Jemena in 2018 to upgrade one of their substations at Essendon, the work includes demolition of existing structures, services installation and construction of foundation slabs for new transformers. Last week we poured the first of our 2 new transformer slabs and footings as part of our ongoing works for Jemena in Buckley St, Essendon.

As part of this Sub Station upgrade, GRA are demolishing 2 x existing transformers & enclosures and reinstating them, along with 6 new footings, an 80 metre CSR trench, pits & drainage.

The Slab will be prepped for 10 pre cast panels to be lifted in and eventually Jemena's new transformer, whilst continuing with the CSR trench and pits.



Global Rail Australia is proud to announce that it has commenced offering both the Certified Associate in Project Management (CAPM) and Project Management Professional (PMP) to all Management Staff. These qualifications are recognized worldwide. The uptake has been nearly 100% and our Supervisory and Management staff from both the Rail & Infrastructure and Telecoms division will commence the relevant courses in March 2019.

We would also hope to offer this opportunity for further learning and development to other companies within the group. The courses can take anywhere from 3 months to a year to complete so we will keep you updated of progress and the first of the team to get their qualifications.

Global Rail Australia

have been awarded works on the Boxhill to Ringwood Project on behalf of Metro Trains Melbourne.

The works will include an upgrade of existing shared user path. Also, the installation of new concrete path, retaining walls, fencing, line marking and signage



Project Updates

Little River Signal Penetration Infill

On behalf of our client V Line we are currently reinstating platforms at location of redundant signal penetration. Works include demolition of existing platforms, placement of precast platform units, structural backfill, asphalt, line marking and bluestone walls to face of precast.



Merbein Culvert Works

Also on behalf of V Line we are upgrading the storm water provision to Merbein train line. Works include undertrack crossing with precast drainage culvert, swale formation adjacent to track line and reinstatement of all track elements post completion.



Geelong Train Station

We undertook the conversion of an existing storage facility to provide drivers with new amenities. i.e. bathroom and showers. Works included, plumbing, electrical, internal linings, carpentry, tiling and painting.

Surrey Hills Tie Station

We are currently in the process of the demolition of existing redundant Tie Station. Works include complete demolition of brickwork walls, colorbond roofing and structural slabs. Specialist removal of asbestos containing material by licensed Contractor.

Seaford Maintenance Depot

We are undertaking the construction of a new maintenance facility.

Works include structural steel frame, wall cladding, roofing, internal linings, painting and service systems.

Our client MTM are very satisfied with our works.

Somerville Road Signal Install

On behalf of V Line we are also replacing a damaged signal pole at Somerville road level crossing. Works include the demolition of existing footing, piling, form reinforcement and pour to new footing, new signal pole erection and provision of required service routes.



Global Rail Australia has proven experience in delivery of the most exacting projects across a diverse range of service sectors. Our in-house capabilities, our scale and our supply chain partnerships have allowed Global Rail Australia to deliver complex multi-disciplinary projects that make a positive difference to our clients, across the Australian infrastructure industry that we serve.

Global Rail Australia
5 Plane Tree Avenue
Dingley Village
Vic 3172
Australia
+61 (0) 3 9551 0465

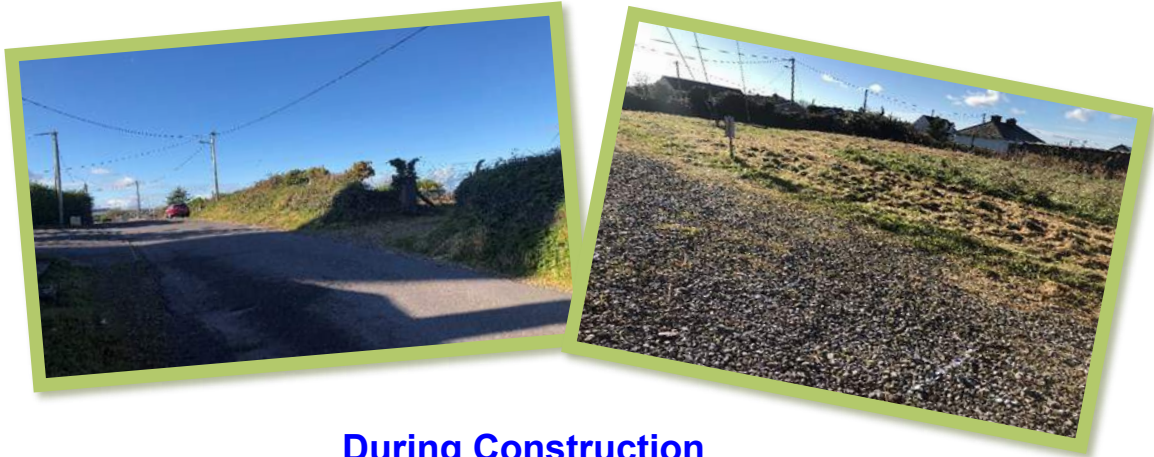
Project Updates

2rn Crosshaven

GRA Networks have completed works on a 2rn site in Crosshaven, Co. Cork. Works involved the installation of new tower base measuring 8m by 8m, removal of section of hedging/lowering of embankment and fencing to improve visibility and the installation of new fencing and new 5m entrance gate.

The 2rn site in Crosshaven is an existing broadcasting transmission site covering a large geographical area. The existing 48m stayed mast is at end of life and our project is to replace it with a new 48m free standing tower. The new tower was delivered to site mid February.

Pre-Construction



During Construction



Completed Works



Project Updates

ESB Gweedore To Ardnagappy

GRA Networks successfully completed a new link install between ESB Gweedore and Ardnagappy. The link build demonstrates the continued nationwide maintenance and installation work GRA Networks supply to ESB at the highest possible standard.

This project is part of a tender for a 4 year framework to provide transmission services for ESB Networks. GRA Networks already have separate contracts with ESB for maintenance of all their telecom sites and for the national ducting framework and this tender is further developing our relationship.



3

3 Ireland – Ozone Project

We were exclusively awarded LTE Infills on CIE sites on behalf of 3 Ireland. The crew are currently undertaking works on Kilcock CIE, Co. Kildare - 34km from Dublin. The site required a full structural analysis, civils, ducting and the infill works which are currently in progress.

On this project **GRA Networks** are to infill on the site with a T44 Outdoor Cabinet, 3 new Quadband Huawei AQU4518R24 antennas, installation of L800, G/U 900, L1800 and U2100 technologies onto site.

Fibres and DC cable installation from cabinet to new RRU locations. All undertakings are currently on schedule.



Thank You To Our Diligent Team

SHARE YOUR NEWS

Tell us what's happening or send us your pictures or videos.

globalnews@grcl.co.uk

Project Updates

LTE Imagine Contact – Builds & Decoms – Challenging Sites

We are continuing works on the Imagine LTE High-Speed Broadband roll out. We currently have two build crews on this project completing new site builds nationwide and an additional decommissioning crew.

One challenging rural site build the crew are currently undertaking is on a site called Seanafisetin in Connemara where there are extensive meta-sedimentary rock beds across the land.

This barren coastal region of West of Ireland in Co Galway: consists of quartzite mountains, peat bogs and many lakes. Although this part of the world is beautiful in the summer it is quite stark and windy during the winter months which presents its own challenges when climbing, access and getting equipment to the site to complete a full installation. There is no access road to the site due to environmental restrictions in the area so access is very difficult in the winter months.

The crews had to arrange for a tracked machine to bring all materials, tools and equipment safely to site.



A site decommission was completed on Tallaght Hillside this month. This vast SDH tower holds over 180 live dishes. The crew completed the task seamlessly and successfully removing existing dishes, obus, cabling, cabinet equipment and all associated steel work and cable management.

Across both projects the client is very happy with the progress and all forecast delivery dates are being met.

We have scheduled sites up to the end of March 2019 with more sites being released in the coming weeks.

GRA Networks

offer infrastructure contracting services on a design and construct basis in the transport, telecommunications, utility and energy sectors, providing cost-effective solutions to complex problems.

GRA Networks Ireland

Unit 516a Grants Rise
Greenogue Business Park
Rathcoole,
Co Dublin
D24 FH56
Ireland

Project Updates

St Kilda Festival – COW

GRA Networks are currently working with Cellular Asset Management, deploying COW (Cell On Wheel) sites providing mobile phone coverage/capacity for special events. We have recently deployed a COW site for the St Kilda Festival to meet the extra demand placed on the 4G network by the general public attending the event.

This is a 7 sector site with two slim antennas and one multibeam antenna operating in Vodafone high band (2100 MHz and 1800 MHz).

This is a complete RFU solution with an 80G transmission microwave link which successfully achieved 130 Mbps end user download speed per technology unit in the call test results. All the equipment is installed inside the COW SKID with capability of mast extension up to 12m high.

The COW SKID has been decommissioned from previous special event sites including the New Years Eve event. The unit was delivered and setup at St Kilda within 3 days followed by RAN integration. The COW Skid is setup adjacent to the event area and is fully secured from general public.



M8380 Kurunjang South — New Optus Rooftop Site

In January **GRA Networks** began work on a new Optus rooftop site at Kurunjang, Victoria.

The building is currently used as a 24hr gym and the site build consisted of strengthening the existing steel work in the roof structure before installing external steel platforms and poles for the Optus equipment.

Having to work internally in a live gym using scaffolding required constant planning and communication with the gym owners in order to complete the job safely. The internal steelwork took 2 weeks to install with the external build requiring a further 2 weeks to complete. The crew did a fantastic job in getting the site built in difficult circumstances.



Well Done Everyone!





**GRA
Networks
Australia**

Project Updates

M0094 Chelsea – Site Upgrade



In December **GRA Networks** carried out an EJV upgrade of the Optus/VHA site M0094 Chelsea.

The site is situated on an old warehouse building overlooking Chelsea Beach. The site build consisted of steel strengthening and installation of new antennas, feeders and equipment on existing steelwork.

The site took 3 weeks to complete requiring a lot of man power to get the equipment up to the roof level.



Telecommunications Apprenticeship – MIGAS

GRA Networks is delighted to have embarked on a new era for the organisation, with the establishment of our first apprenticeship training scheme for our Telecommunications business.

In partnership with the MIGAS Training Group, our first apprentice telecommunications riggers and technicians commenced with us in March.

The MIGAS Training Group have been in operation for over 30 years and specialise in skilled trades employment across manufacturing, construction, automotive, mining, engineering, telecommunications, electrical and other related industries.

We are excited about the next stage in the company's development and welcome the new recruits who have joined us and wish them every success for their future careers.



APPRENTICESHIP



SCHOOL



STUDIES



PROFESSION



SKILLS



PERFORMANCE



CAREER



MOTIVATION



GOALS

Project Updates

Main Building Roof Renewal Works at Colbert Station Limerick

Roof renewal works at Colbert Station Limerick are successfully ongoing.

The works consist of removing the existing roof finish to the office building and re-roofing including associated building and M&E works.

The station, which was built in 1858 and is home to four rail routes, has had extensive upgrading and refurbishment in the last few years including a new pedestrian plaza replacing the car park at the front of the station, construction of a new bus station and significant refurbishment to the station interior.



Limerick Junction Down Platform & Footbridge Works

Work is ongoing in Limerick Junction. The project involves construction of a new down platform, installation of a footbridge and associated infrastructure. Works are due to continue until June 2019. The new platform measuring 240m will remove constraints and speed restrictions associated with the current single platform which caters for Dublin to Cork/Kerry services in both directions.





Global
Rail
Services

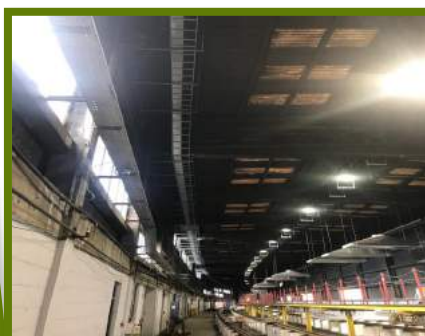
Project Updates

Heuston Valeting Plant

The M&E Division of **Global Rail Services Ltd (GRSL)** have been awarded a contract with Irish Rail, to replace the existing life expired Mechanical and Electrical systems in Heuston Valeting Plant.

The project scope of works include:

- ♦ Surveying the building, to confirm the dimensions of area/rooms, confirm the proposed routes and issue design proposals;
- ♦ The safe removal and disposal of any residual Mechanical and Electrical systems and hazardous substances;
- ♦ The design and installation of new high efficiency modulating boilers, connectivity to a new oil storage tank and the provision of new pumps, valves etc;
- ♦ The fabrication and installation of new connective pipes, air ducts, cable containment and cabling;
- ♦ The fabrication and installation of Form 4 type 2 electrical switch panels, BMS control equipment and panels, cable containment and cabling;
- ♦ All Electrical services, BMS heating controls, Fire Detection and remote fault monitoring;
- ♦ All builders' works in conjunction with coring walls, installing fire sheathing, fire doors and with the clearing of waste and discarded materials.



SHARE YOUR NEWS

Tell us what's happening
or send us your pictures
or videos.

globalnews@grcl.co.uk

Project Updates

Dublin City Centre Resignalling Project Phase 4

Global Rail Services are continuing work on Phase 4 of the City Centre Re-signalling Project (CCRP) which is the fourth and final stage of the upgrading of commuter rail services for the Greater Dublin Area. The primary focus of this project is the replacement of signalling equipment which is becoming life-expired and for which maintenance is becoming increasingly costly. Recent works involved installing a signal platform at Xavier Avenue, Northbrook Avenue and St. Georges Avenue.



DC373 - Xavier Ave Signal Platform Installation



DC474 - St Georges Ave Signal Platform Installation



Global
Rail
Services

Project Updates



Global Rail Services have introduced an initiative for Driver Safety where there will be an award given on a monthly basis to the driver with the overall highest safety score. With our continued growth and increased number of vehicles on the road we are facing exposure to increased risks. This year an objective for **Global Rail Services** is to focus on driver safety.

All company vehicles are fitted with tracking devices and this system measures a driver safety score which is based on speeding events, harsh braking and harsh acceleration. A safe driving score would be 75 and above.

Global Rail Services have now introduced an initiative to reward good driving which will see the driver with the highest overall safety score each month rewarded with a €50 One4all voucher. Further initiatives will be announced over the coming months.

Tom Staunton (GRSL General Manager) ***"I would like to congratulate this months winner, Paul Evans on receiving the first Driver Safety winning voucher. Please remember to always be vigilant of your driving to ensure continued safety."***



Paul Evans (L) presented with his voucher by Damien Carroll

A Day in the Life of

In this issue, we meet Bronwyn Curham, QSE Manager for Global Rail Australia. We find out a bit more about her....

What project are you currently working on?

Integrating HSE Management System with the inclusion of the new Standard ISO45001.

What are your most favourite things about the job?

Thursdays - I also really like it when something I've implemented has made a positive difference to improving safety in the workplace.



What advice would you give to anyone considering this profession?

"Selling Safety is like selling manure door to door. Those who know the benefits will welcome you, allow you to tip it into their garden and watch their fruits grow. While those who don't simply believe you are there to stink the house and soil the doorstep".

What do you feel most proud of?

My garden's pretty cool – and I suppose I better mention my son.

If you could travel anywhere, where would you go and why?

Canada and Alaska because they're gorgeous and I've already been to Ireland.

How do you spend your free time?

Kayaking whenever possible, cycling on the rail trails around Vic, reading and gardening.

What is your greatest strength or weakness?

Strength – doing what I say I'm going to do.

Weakness – changing my mind.

Hobbies or special interests?

Kayaking.

What is your favourite sport?

Being a Kiwi we won't mention rugby at the moment so I'll say sailing large keel yachts.

If you won the Lottery what would you do?

Spend it – buy an island.

Global Rail Construction Recognised for Safety Excellence



The health and safety of our employees and others who may be affected by our activities has always been of paramount importance to **Global Rail Construction Limited (GRCL)**.

This can be evidenced by a recent safety commendation at the S&C South Alliance, where the company were ranked in the **top 3** for Period 10 in respect of their Signalling and Telecommunications (S&T) work.

This is a monthly forum, where all supply chain partners attend, so it is great for GRCL to be recognised for its excellence in safety amongst our peers.

Safety and well-being is central to GRCL's approach. The continuous improvement in occupational health and safety management and performance is achieved through the implementation and maintenance of an occupational health and Safety Management System (SMS).

Global Rail Construction's safety management ethos is based on risk assessment and control throughout its operations. The company constantly endeavours to provide a safe place of work, with safe and maintained plant, equipment and systems of work.

This approach is enhanced through the provision of appropriate information, instruction and training on and off site, ensuring safe use of materials and substances and by diligently working to prevent accidents.

Mick Walsh, GRCL's Head of Resource, attended the day and added:

"It was great to receive such praise and this has been duly acknowledged by our client Colas, through a further extension of our current contract with them. What a fantastic effort from our Southern based teams".

GRCL Safety Coach Meeting

The safety engagement meeting was organised by Vas Vancea (GRCL Project Manager) who has essentially covered a few interesting areas including:

- > Introduction to dig permits
- > How to complete a dig permit form
- > How to read buried services drawings

In addition, thanks to Peter Coleman (GRCL Head of Compliance) for providing the training materials, not only has this resulted in positive feedback from the participants but also clear understanding on the objectives.



Global Rail Construction Welcome a New Apprentice Civil Engineer

Global Rail Construction Limited (GRCL) are delighted to introduce our latest Apprentice, Charlie Rice, who joins our Global Family.

Charlie will be based within our in-house design team where he will be taught by our experienced team of Draughtsman and Civil Engineers to give him the skills to progress. Alongside this in-house training, in September he will attend college one day a week, studying towards a BTEC HNC in Civil Engineering.

Charlie has already achieved a Level 3 Extended Diploma in Civil Engineering with City & Guild. The BTEC HNC qualification comprises ten core units studied over a two year period, covering a range of subjects such as Applied Mathematics, Construction and the Built Environment, Engineering Geology and Soil Mechanics and Structural Analysis, Design and Site Surveying culminating in a Group design project that involves putting these learned skills into practice in a real world scenario.

We asked Charlie why he wanted to join GRCL he said: ***"I was keen to join a primary contractor with multi-disciplinary experience, to give me a broader experience whilst I am learning."***

Hiring Apprentices is part of GRCL's policy to build for the future and we are delighted to welcome Charlie and wish him every success.

If you are interested in joining us as an apprentice, please send your CV plus a covering letter to careers@grcl.co.uk



APPRENTICESHIP





Global
Rail
Construction

Project Updates

Gunnersbury CRMS design

As part of our remit to design new cable management systems for NR/TFL upgrade works on behalf of BAM Nuttal, **Global Rail Construction** Design team recently carried out topographical and investigative surveys during possession works on weekend 42.

The topographical surveys were carried out using Leica GPS rovers, four teams covered over 4km of track. Our investigative teams carried out rodding and roping surveys of existing duct routes through the platform of Kew Gardens Station and a series of trial pits in and around Gunnersbury Station.



Our vision is that everyone arrives for work healthy and leaves for home safely, everyday.

Another Successful Weekend at Feltham for Global Rail Construction

Global Rail Construction Ltd had another busy and successful weekend on their Feltham Resignalling Works (Week 42), completing and handing over another 6 signal structures.

Having previously designed and installed the piled foundations, the company successfully installed 3 of the signal structures – including 1 gantry type – and undertook works to 3 other signal structures too.

The team also installed ductwork at Norbiton Station, delivered materials to the PSP site and the Loc area at Norbiton, delivered troughing route materials between Hampton Wick and Shaklegate and installed ballast boarding and troughing route at a number of other locations.



UK Rail infrastructure contractor and Principal Contractor Licence Holder, Global Rail Construction Ltd, are delivering the full GRIP 5-8 design and construct contract directly for Network Rail. The scope of work covers civil and structural engineering works on Network Rail's Wessex Route and specifically covers: Area 1a – Shepperton Branch; Area 1b – Norbiton Sub Station to Fulwell Jct and Area 2 – Barnes to Whitton Jct, Hounslow Sub Station.

The Feltham resignalling project forms part of the signalling renewals/National Operating Strategy (NOS) scheme, which is intending to renew the life-expired signalling infrastructure in Feltham and Wokingham areas to the modern equivalent form.

The total scheme covers the renewal of 538 Signalling Equivalent Units (SEUs).

The full geographical workscope, which covers over 80 miles of railway lines also included, for the first time, the introduction of Atkins' brand-new signalling system – Elix.

Global Rail Construction Ltd (GRCL) is part of the Global Infrastructure Group and is a leading UK provider of design and build services to clients in the rail and transportation sector.

The company is a principal contractor for UK mainline and metro railways across a number of disciplines, which include signalling, mechanical, electrical and power (MEP), telecoms, civil and structural engineering, maintenance, renewal, providing a fully tested and commissioned service, on both Network Rail and Transport for London controlled infrastructure.





Global
Rail
Construction

Project Updates

GRCL Energise 42 New Functional Supply Points in Felixstowe

After a very busy period of testing and commissioning, **Global Rail Construction Ltd (GRCL)** has fully installed and energised 42 new Functional Supply Points (FSP's) over a 13-mile stretch of the Felixstowe to Ipswich Branch line, including the supply and installation of a new Principal Supply Point (PSP) at Westerfield.

Works were carried out successfully and handed over to our customer VolkerFitzpatrick on time, at the start of the Christmas blockade, enabling them to bring into use new, improved signalling equipment.

These works form part of GRCL's significant package of Mechanical, Electrical and Power (MEP) works between Westerfield and Felixstowe on Network Rail's Anglia Route.

The Project is for VolkerFitzpatrick (VFL) as part of their ARC (Anglia Regional Collaboration) framework for CP5, which involves the double tracking of sections of Permanent Way – over approximately 20 Kilometres between North Ipswich and Felixstowe – to increase capacity for the main freight route from the Port of Felixstowe.

There are also further railway systems works, including the upgrade of signalling and also significant ground engineering works to improve the line stability. Led by Operations Director Sean Donaghey, GRCL is delivering the full rail E&P 650v signalling power scope, which includes the new PSP at Westerfield, upgrade and modifications to other existing PSPs, the installation of 42No Functional Supply Points (FSP) and installation of 45km of new cabling.

The works also covers the installation of direct power and lineside power supplies for a number of level crossings, as well as new level crossing lighting. Further works include the installation of 3No. PHCC (Points Heating Cubicles) to supply and install, points heating supplies, transformers and heating strips for point ends.

As part of the same Felixstowe Branch Capacity Enhancement Project, Global Rail Construction Limited (GRCL) is also delivering ancillary rail civil engineering works. GRCL Operations Director, Sean Donaghey, was delighted with these successful Christmas works, highlighting the great contribution made by the E&P team.

“Delighted with the efforts and contributions of our team during the festive period. This energisation was a result of a concerted team effort, working in complete harmony with our customer VFL.

“I am pleased to say that our E&P division is going from strength to strength and we are delighted to be able to offer rail customers a proven Civils and E&P D&B solution and a fully managed independent E&P offering for CP6.”



Thank You To All The Team Involved

Global Rail Construction Delivering Works at Doncaster on behalf of ABB

Global Rail Construction Ltd's (GRCL) teams have successfully installed 3 No UTX's as part of the Christmas blockade at Potteric Carr in Doncaster. The first UTX was a 4-way 2 track UTX, the second a 4-way 1 track and the last a 12-way 2 track UTX. GRCL's specific works here formed part of the overall package for the substation build.

The works were carried out over 3 shifts starting on Christmas day night through to Boxing day night. Significant and in-depth planning and preparation for these works were required and undertaken by GRCL's team, which helped the teams to complete all the works ahead of programme but more importantly the works were completed safely.

The contract forms part of Network Rail's strengthening of the 25kV traction power supply to the East Coast Main Line (ECML) to support the delivery of Hitachi's new Intercity Express Programme (IEP) Depot at Doncaster in South Yorkshire.

This 25kV traction power supply strengthening work involves the design and construction of a new 33kV to 25kV, 50Hz static frequency converter (SFC) traction power supply system. The traction power supply strengthening work also includes associated E&P Infrastructure located at and near Potteric Carr including:

- 33kV substation and 25kV feeder station compound
- 33kV substation building
- 33kV/400V auxiliary transformers
- 400V auxiliary power supply switchgear
- 25kV feeder station building
- 33kV, 25kV, traction return, 400V, earthing and bonding, protection, control and telecommunications cabling
- OLE connections to the ECML and the IEP Depot
- SCADA system infrastructure
- Telecommunications system infrastructure
- Civil and structural works for all of the above

Managing Director Marco Lombardelli had this to say:

"A huge thanks to our Northern team for the thoroughly professional works you are delivering. These UTX installations were an important part of these works and we were delighted to see that the detailed planning and preparatory works that were undertaken in advance with both our client and other project stakeholders enabled this achievement."

"Thank you for all your efforts during the Christmas period, it really was appreciated."

"We look forward to works continuing to progress and the completion of this programme later this year."



Global
Rail
Construction

Project Updates

Since delivery of the Christmas works, our **Global Rail Construction** team on the Doncaster site have been busy over the past two months completing various parts of our works for our client ABB.

They have completed 1km of surface laid troughing, this will connect up the new GRP trough route which is currently being installed at the ECML corridor.

Once the route is completed, we will then pull in the HV cable and TRC cables which is programmed for weekend 1.

Our team working within the SFC and Switchgear compound have also been busy with the completion of the three phase and single phase 6 meter high blast walls. We also completed the DPD base then handed over the SFC compound to our client ABB.

This will allow them to erect the steel supports for the Buz bars and reactor bases.

We will then take back the SFC compound when ABB are finished and complete our remaining works.

In the Switch gear compound the team have now completed the Twin Transformer Auxiliary base with 3 meter high blast walls (pictured below). This is now one of the last major concrete pours on our project.

The next section of works involve our teams installing deep drainage along Mallard Way and two attenuation tanks. Also on the scope will be 300 meters of buried HV route along the Decoy Road.



PRISM: Supplier Performance



PRISM is Network Rail's tool to measure performance of their Principal Contractors (PC) (only) together with giving the PC the opportunity to also score NR's performance within clear disciplines on that particular project.

Great performance by Pat Rouse, Mark Parker, Design, Safety and the team

on our GRCL Feltham project which is evident with the scores obtained on a period by period basis. These results are for December 2018 which give an average of 4.36 out of a possible 5! This has been pretty consistent throughout the year and performance of the project.

Well Done & Thank You



Staff
Updates



Louise O'Toole
Purchasing Officer



John Brown
QSE Advisor



John Casey
Project Manager



Billy Thirkettle
Electrical Supervisor



Peter Moran
Project Coordinator



Charlie Rice
Apprentice Civil Engineer



Lorcan Duff
Electrician



Nick Ansell
Business Development Manager



Emmet Lamb
Electrical Apprentice



Ben McManus
Electrical Apprentice



Nabin Basukala
Telecommunication Technician

WELCOME TO THE GLOBAL FAMILY

"YOUR
MENTAL HEALTH
MATTERS."

Global Rail Construction are pleased to announce the introduction of a new **Employee Assistance Programme (EAP)** for all colleagues commenced on **1st March 2019**. The EAP will be provided by Validium, a professional and independent Employee Assistance provider who support over 350 organisations in the UK.

An Employee Assistance Programme is a confidential counselling and information service to assist you with personal or work-related problems that may be affecting your health, wellbeing and work-life balance.

The EAP service offers you **24 hours a day, 365 days per year** access to telephone counselling, information services and short-term face to face counselling with a professional counsellor, close to where you live or work, at no cost to you.

Your Validium Service
is there to help You
by providing...

You can call the EAP on a **free-phone** number for help with a wide range of problems from relationship difficulties to neighbour disputes, and from change to consumer rights.

The following services are available under the **Global Rail Construction** EAP.

- Legal Information and Guidance
- Money and Debt Information
- Health and Wellbeing Information
- Stress and Emotional Counselling
- Short Term Face to Face Counselling

Look at the eLeaflet for further information: [GRC_EAP_eLeaflet](#)



You can also access the service on line by visiting www.validium.com. 'vClub' gives you access to a wealth of information and links on issues that may be affecting you. The service is free, confidential to use and is entirely secure. To access vClub enter the following generic security details: **username: GLOBALEAP1 password: Support01**

You will then be prompted to set up your own username and password. So, whether you are worrying about something, need some practical information, or simply want to talk something through with someone in confidence, the EAP is there to help.

0800 3 58 48 58

Outside UK: +44 141 271 7179

For online support join vClub at validium.com

Username: **GLOBALEAP1**

Password: **Support01**

NGT Service: 18001 + helpline number or download NGT Lite App.
Ensure your device is connected to Wi-Fi to run NGT Lite.



My vClub – Available on App Store & Google Play

The Frontline Walk October 2018

Well done to Mick Walsh (GRCL Head of Resource) for taking part in 'The Frontline Walk' in October 2018 and raised an incredible amount of £2,090. All the money will all be used to help soldiers, veterans and their immediate families whatever the circumstances.

Many people have also signed up for the next Frontline Walk which will take place on the following dates:

- 2nd - 6th October 2019
- 9th - 13th October 2019

Please follow the link below to donate to this charity:

<https://soldierscharity.org/donate/make-donation/>



Upcoming Charity Event



Jim Cuell (GRCL Commercial Director) will take part in the London Landmarks Half Marathon to raise money for Cancer Research UK).

Jim's story... "This year I have decided to take on a couple of personal challenges. The first of which is the London Landmarks Half Marathon taking place in Central London on Sunday 24th March 2019. I have been fortunate enough to be accepted onto the Cancer Research UK team and will be running and raising money on their behalf.

Like so many of us I have lost loved ones and know people who are fighting against this terrible disease.

Cancer Research UK is the world's leading charity dedicated to beating cancer through research.

They are fighting cancer on all fronts, finding new ways to prevent, diagnose and treat it to save more lives.

They are entirely funded by the public. With your help, they are working to ensure more people beat cancer.

I know that there are lots of worthy causes but if you are able to spare some time to donate to this incredible charity it would be very much appreciated."

If you are able to donate please follow the link below.

Thank You For Your Support

<https://fundraise.cancerresearchuk.org/page/jims-giving-page-33>



**CANCER
RESEARCH
UK**

congratulations!

Congratulations to Barry Smith, (GRCL Assistant Manager) for successfully completing his "A61 Appointed Person Training Course."

The CPCS A61 Appointed Person Training Course is designed for operatives who are responsible for the planning and execution of lifting operations.

This course provides candidates with the knowledge to ensure compliance with the law and safety of individuals and those who may be affected by their actions.

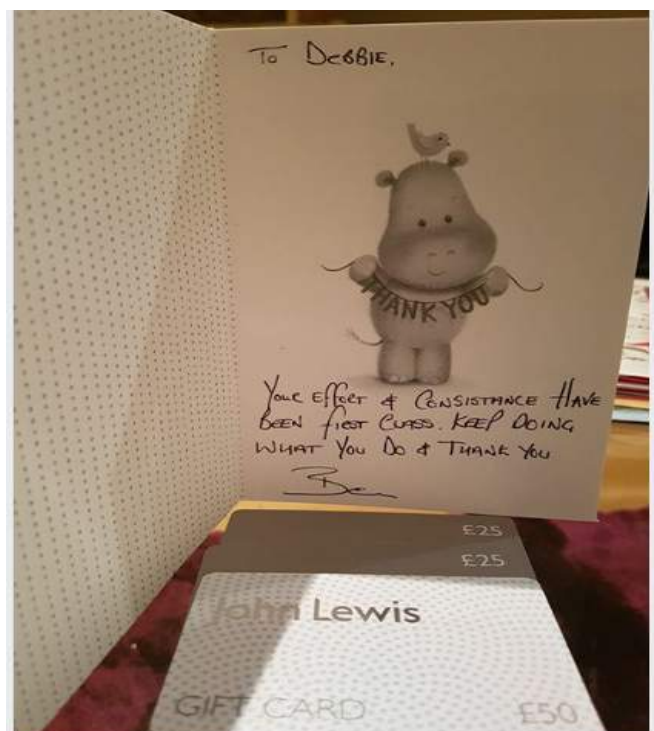
This is an extremely difficult course with a very high failure rate and it's a testament to Barry's hard work and dedication that he has passed this course.

This will be a key function Barry will be able to supply to our project team and will help boost Global Rail Construction's ever widen skill base. **Well Done Barry**



A very happy birthday to Phil Vincent (GRCL Site Supervisor) who celebrated his 60th in January.

Congratulations Phil



A big well done to Debby Cambridge (GRCL) for receiving the above card and vouchers as a thank you from our client VolkerFitzpatrick for going above and beyond the call of duty.

**Thank you Debby
&
Keep Up The Good Work**



SHARE YOUR NEWS

Tell us what's happening or send us your pictures or videos.

globalnews@grcl.co.uk

CLOSE CALL WINNERS

Close call was a member of the public who was under the influence and was accessing track where third rail was present.

Our on site **Global Rail Construction** team, George Stan, Andrei Rafaila, Norbert Mihai Vadas and Ciprian Pricop spoke to the individual and managed to get him to a place of safety. Colin Ford (L) (GRCL QSE Advisor) presenting George Stan with his Close Call Certificate.



Just For Fun!

C	L	A	S	S	E	S	M	O	P
H	T	I	D	M	I	Y	U	I	E
H	E	B	Z	B	E	P	T	T	L
E	S	R	L	M	M	P	A	E	B
A	A	A	E	O	D	A	B	R	I
R	F	C	H	D	C	H	L	A	X
R	U	O	H	U	O	K	E	T	E
A	R	B	H	L	A	C	S	O	L
Y	P	P	Y	E	I	N	S	R	F
E	S	S	T	C	E	J	B	O	S

ruby
 blocks
 heredocs
 classes
 iterator
 module
 objects
 flexible
 each
 happy
 mutable
 lambda
 hash
 array



SHARE YOUR NEWS

Tell us what's happening or send us your pictures or videos.

globalnews@grcl.co.uk



Global
Infrastructure
Group

A Leading Provider Of Turnkey Solutions
For The Rail Industry



Railway
Construction



Civil
Engineering



Telecomms



Multi-Utilities



Power
Networks



General
Construction



Design and
Consultancy

Combining technical and innovative excellence with a
real passion for detail and safe delivery of projects

www.theglobalinfrastructuregroup.com