



Global
Infrastructure
Group

Issue 21 2019

GLOBAL NEWS



In This Edition.....

- * Project News**
- * New Starters**
- * Save The Date...**
- * A Day In The Life...**



globalnews@grcl.co.uk

Foreword

Welcome to another edition of Global News and our final one for 2019!

As another year draws to a close, may I take this opportunity to personally thank all our staff for your efforts this past year and to wish you, along with your families, all our clients and our supply chain partners, a very happy Christmas and prosperous new year!

We have worked tremendously hard this last year to extend our core in-house capabilities and therefore position the Group as a strong tier 2 contractor across our three entities. Given the slow-down in the UK industry as a result of the transitional period between CP5 and CP6, we have managed to secure a number of key packages throughout that period which ensured our continued success during a very difficult time for the industry.

Our in-house capabilities are now able to deliver Design and Construction, E&P (M&E), Track and (S&T UK only) across our group of companies in 3 different countries. As always, our continued success can only be achieved via the hard work and effort of the entire Global family and this truly is testimony to our commitment to enhance our service delivery across our group of Companies.

We have been fortunate to share in many positives and successes throughout the year, and although I and the senior leadership team are delighted with our performance, the one thing I would most like to highlight is our safety performance throughout this and previous years.

Our focus and direction has always been to ensure we are '**best in class**' and to insist through everything we do, we always keep our people safe – that is our priority.

I am so pleased to say that we have again had an extremely positive year and I largely thank our Senior Management team, our HSQE team for their drive and focus to improve our processes and procedures together with ensuring consistency in their implementation.

However, there are a number of other factors that contribute to our excellent safety record,

ALL OF YOU

Our safety engagement program and the continued support of our safety coaches ensures we impress our core values and behaviors throughout all our projects. They guide our daily activities, develop our culture and compliment and support our strategy which are at the heart of all our day to day activities as well as being reflected in our policies and procedures.

The support from our Project & Construction Managers, our supervisors and all of you is really making a difference – Please let's keep doing what we are doing, being open, honest and happy to challenge the status quo to ensure we all go home to our loved ones each day.

Finally, I would also like for us all to take a moment to reflect on those who are no longer with us and particularly their families but live on in our hearts and will always be remembered as part of the Global family. Please also give some thought over the festive period for the families of Gareth Delbridge and Michael "Spike" Lewis who tragically lost their lives at Port Talbot earlier this year.

Thank you all once again and wishing you and your families a very merry Christmas and happy, healthy and safe 2020.

Kind regards

Marco Lombardelli

**Passionate**

Committed in heart and mind to whole-heartedly embrace our core values and culture, without exception.

**People**

Growing our organisation from within, promoting and empowering our people, inspiring them to be the best they can be.

**Professional**

At all times we act with integrity, providing quality service, reliably and responsibly.

**Teamwork**

Working collaboratively whilst supporting and respecting each other's views.

**Responsible**

To consistently deliver quality, on time, safely and to budget whilst protecting our communities and the environment.



Mission & Vision

Using the best mix of technology and tradition,
The Global Infrastructure Group empowers its workforce to deliver to
our clients the best possible standards of workmanship within the UK
rail industry at a competitive price.



It's hard enough to experience mental health problems, without having to face the judgement, shame and isolation that often surrounds them. That's why all at The Global Infrastructure Group Family supported World Mental Health Day on the 10th October 2019. We believe it's time to change and all play our part in ending mental health discrimination.

If a colleague or friend is acting differently, please do ask twice....

Being mentally healthy doesn't just mean that you don't have a mental health problem. If you're in good mental health, you can:

- make the most of your potential
- cope with life
- play a full part in your family, workplace, community and among friends.

Some people call mental health 'emotional health' or 'well-being' and it's just as important as good physical health.

Mental health is everyone's business. We all have times when we feel down or stressed or frightened. Most of the time those feelings pass. But sometimes they develop into a more serious problem and that could happen to any one of us.

Everyone is different. You may bounce back from a setback while someone else may feel weighed down by it for a long time.

Your mental health doesn't always stay the same. It can change as circumstances change and as you move through different stages of your life.

There's a stigma attached to mental health problems. This means that people feel uncomfortable about them and don't talk about them much. Many people don't even feel comfortable talking about their feelings.



0800 3 58 48 58

Outside UK: +44 141 271 7179

For online support join vClub at validium.com



An Employee Assistance Programme (EAP) is an invaluable tool for any organisation, ensuring that good mental health is promoted and facilitated, as well as minimising the impact of any external distractions on employees' abilities to function or focus while at work. Validium EAPs integrate several clinically proven counselling programmes with an array of specialist work/life services. Provided alongside a unique, proactive approach to account management and promotion, Validium delivers a service that is highly visible within the customer organisation, is trusted by employees, is fully utilised and, most importantly, provides great results for employees.



SAFETY STAND/DOWN

Global Rail Construction Limited

commenced their safety stand down on the 30th September 2019 to 04th October 2019.

In this year's stand down the business looked at the following subjects;

- Close calls and incidents 2019
- Communication and understanding
- Eat Well - as part of our health and wellbeing initiative

The QSE and Senior Management teams visited all live projects plus Head Office to engage with our site teams, subcontractors and clients.

There was positive feedback from the participants on the stand downs and suggestions were offered to improve our health and safety performances.



Thank You All For Your Cooperation



Our vision is that everyone arrives for work healthy and leaves for home safely, everyday.



Richmond to Gunnersbury D&B Civils Completion



Global Rail Construction Limited (GRCL) has completed 4000m of TTS troughing installation works on the LUL Network between Richmond to Gunnersbury on behalf of BAM.

Having already successfully completed the Design works for this Cable Route Management System as part of a separate contract with BAM, this contract completion highlights the strength of Global Rail Construction Limited's (GRCL's) integrated end to end, in-house Design and Construct capabilities.

These works form part of the wider modernisation and up-grading of the Sub-Surface Railway network, comprising

of the Metropolitan, District, Circle and Hammersmith & City Lines, whereby Network Rail is required to design and build new Cable Route Management

Systems to support primary power and signal cables from Turnham Green to Richmond.

Operations Director, Sean Donaghey added:

"Very pleased with the completion of this important contract. We look forward to working with our long-term partner BAM again soon."

GRCL offer rail infrastructure contracting services on a design and construct basis. Our capabilities support the latest technology, management and engineering know-how, which allow us to deliver high profile projects throughout the UK rail network on both Transport for London and Network Rail infrastructures.

Global Rail Construction Ltd

is a Principal Contractor and a leading UK provider of design and build services to clients in the rail and transportation sector



GRCL Partners Up with Hedson Rail for Track Works on Wessex



Global Rail Construction Limited and Hedson Rail Limited have formed a strategic partnership, to successfully secure Phase 2 of the Track Delivery work bank on behalf of Network Rail's Works Delivery team on the Wessex Route. The contract will see both companies working together to deliver track maintenance and renewals works, initially between October 2019 and April 2020 on one of the UK's busiest rail routes.

Global Rail Construction will be acting as programme manager for the works, with Hedson Rail delivering the responsible engineering and technical requirements.

The works programme, which specifically covers Heavy, Medium and Light Plain Line and S&C Track Refurbishment and Re-Railing, will see the team working in locations throughout the Wessex Route which runs from South-West London as well as from London Waterloo to the South and South-West of England taking in all or part of the counties of Surrey, Berkshire, Hampshire, Dorset, Somerset and Wiltshire. This is not the first time the businesses have worked together, with successful track works already completed in the South East – this burgeoning partnership is something that both businesses are very proud of.

GRCL's UK MD Marco Lombardelli summarised this further, saying:

"As a business, we are always looking to increase our opportunities and saw this as the perfect target. We are delighted therefore, that our programme management capabilities coupled with Hedson Rail specific track engineering and site delivery capabilities were seen as the right solution for Network Rail.

We believe that the right partnerships can add enormous value and will continue to develop existing and seek out future strategic partners, in order to grow our capabilities. We are delighted to add a track arm in conjunction with Hedson Rail to our UK offering, which now aligns our model with the worldwide offering that can be found in both our Irish and Australian businesses.

We are able to design, build and execute a full multi-disciplinary track project by adding Track, to our existing and established successful offerings in Civil Engineering and Building, Power and Signalling.

I am pleased with this new contract and send a thank you to the team who helped make this possible."

Our **Global Rail Construction** Teams have been very busy working on the Kettering Sidings Project on behalf of our client, Amey Rail.

GRCL have been undertaking a number of concrete pours over the last two weeks and are now up to the half way mark in terms of project completion. Our experienced railway civils team, have been using a 52meter boom pump supplied by supply chain partner Camfauds, which has provided some great efficiencies.

The team have another significant pour taking place on Walkway E, as they keep pushing towards the planned project completion at the end of the year.

The entire contract covers the management, procurement and installation of 5No x 260m long reinforced concrete siding walkways, including access ramps and a retaining wall at Kettering Station Sidings.



Thank You To All Involved

Global Rail Construction Ltd
is a Principal Contractor and a leading UK provider of
design and build services to clients in the rail and
transportation sector

Need Extra Resources Over The Festive Period?

validium.com

We sincerely hope that your festive season will be a happy and relaxing one.

However, most of us need guidance or support at some point in our lives. The Employee Assistance Programme works especially hard during the festive season to offer those who contact us support with legal difficulties, health concerns, money matters/debt or counselling issues. Qualified Lawyers, Debt Specialists, Health Professionals and Qualified Counsellors are available to support you.

Problems that people may be facing at this time include:

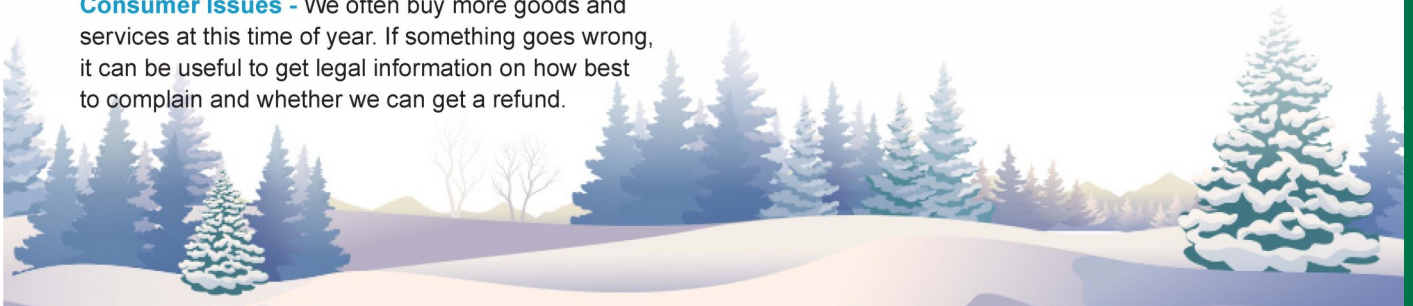
Debt - Christmas is an expensive time of year when many of us overspend in our efforts to make others happy. If we are already struggling financially, the extra pressure can be difficult to manage. You may wish to improve the health of your finances. Talking money matters through with a trained advisor can start the process of sorting out financial problems and move you forward to a financially healthy new year.

Health - Apart from the "self-inflicted" ailments from over-indulgence, many people are not well at this time of year. If you are concerned about your symptoms contact your GP or Health Professional. If your health issues are also affecting your mental wellbeing, for example causing anxiety – contact Validium for support.

Consumer Issues - We often buy more goods and services at this time of year. If something goes wrong, it can be useful to get legal information on how best to complain and whether we can get a refund.

Isolation - Wherever we turn in December, people seem to be having fun. If we are on our own at this time, perhaps dealing with the loss of someone close, the festive cheer can feel bitter. It may help to pick up the phone and talk to someone.

Family Difficulties - The festive season is seen as a family time, yet it is also a time when the pressure on families is high. Arguments, rifts and breakdowns are more likely and we may have to spend our holidays with the people we've spent all year avoiding! If you need to offload about relationship difficulties, don't hesitate to call Validium.



Remember you can call Validium for support on a variety of issues - or go online at validium.com to check out vClub



0800 3 58 48 58

Outside UK: +44 141 271 7179

For online support join vClub at validium.com

 **validium**
IMPROVING MENTAL HEALTH

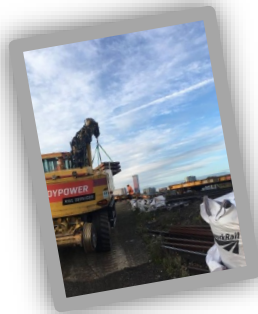
NGT Service: 18001 + helpline number or download NGT Lite App.
Ensure your device is connected to Wi-Fi to run NGT Lite.

My vClub – Available on App Store & Google Play



ONGOING WORKS...

Global Rail Construction in conjunction with their strategic partner Hedson Rail, completed their first core weekend track delivery shift as Principal Contractor at East Croydon, on behalf of Network Rail's Sussex Works Delivery team. All works planned, were delivered safely and to programme. The works cover Pan 8 sleeper replacements and included excavation of the track beds, installation of new sleepers and new ballast including all necessary ETE disconnection and reconnection works. These works are in addition to the Wessex Track Programme contract recently awarded to Global Rail Construction.



GRCL Selected for Redhill Station Platform Extension Works



Global Rail Construction has been awarded a civils contract on behalf of Atkins, for a platform extension at Redhill Station.

The scope of works include:

- Preparation of the existing platform for installation of a new modular platform extension.
- Installation of a cable route through the platform.
- Installation of new RA (Right Away) Indicator and concrete base.
- All blockwork, tarmac and necessary works to existing copers.
- Slotted sleeper installations and IBJ (Insulated Block Joints) recoveries and renewals.



The project is being delivered on key weekends commencing in week 29 and also during mid-week nights.

This project is part of the new 8 and 12 car Class 700 programme for Train Operator GTR, being enhanced by Network Rail and is to support the requirement for providing the necessary signal sighting at Three Bridges, East Croydon, Brighton and Redhill railway stations.

The works will include all necessary logistics and planning management and will be fully controlled by GRCL's project management team.

Global Rail Construction has proven experience in delivering some of the most exciting projects across a diverse range of service sectors. Our in-house capabilities, our scale and our supply chain partnerships have allowed Global Rail Construction to deliver complex multi-disciplinary projects that make a positive difference to our clients, across the UK infrastructure industry that we serve.

Global Rail Construction
Units 18 & 20
The io Centre
Hearle Way, Hatfield
Hertfordshire, AL10 9EW
+44 (0) 870 990 4074

A DAY IN THE LIFE OF

In this issue, we meet Richard Needham, Rail Manager for Global Rail Australia. We find out a bit more about him.....

Current job role?

Rail Manager

What project are you currently working on?

I currently work on the Tasrail project which is a 2 year maintenance contract. I am also working on building a safe working capability as there is a need for this in Victoria.



What is your most favourite thing about the job?

Starting a new Track & Welding Division for Global Rail Australia has been very enjoyable and starting to see some of that hard work coming to fruition.

What advice would you give to anyone considering this profession?

Be prepared to work long hours day or night. Create strong relationships with clients and deliver on your word. The rail industry is quite 'tight nit' and very rewarding when you see your projects being completed.

What do you feel most proud of?

My family and seeing my kids start school. Also, very proud of my wife's career progression.

If you could travel anywhere, where would you go and why?

Africa because I want to take my wife and kids on Safari.

How do you spend your free time?

Going to the gym, cycling down beach roads and taking the kids to sport.

What is your greatest strength or weakness?

Strength – My patience and perseverance.

Weakness – Ego

Hobbies or special interests?

Gym and wine

What is your favourite sport?

Being from the UK its soccer, and I still get up to watch Manchester United play.

If you won the lottery what would you do?

Buy a winery in the Yarra Valley



TRACK CONSTRUCTION DIVISION

Further Investment for Global Rail Australia's Track Construction Division

We are delighted to announce Global Rail Australia's Track Construction Division has seen further significant investment in its management, resources, plant and equipment. The company, which specialises in aluminothermic welding, track construction and maintenance, including the delivery of safe working services, inspection and track handback, has recently acquired three hi-rail welding vehicles, which have now been fully fitted out and prepared in readiness for its Railtech and Thermit welding teams. They have also purchased new rail welding plant.



All of Global Rail Australia's welding vehicles are now fully accredited to work on the MTM, VLine and ARTC rail networks and the company expects to see all of these being deployed from August 2019.

Global Rail Australia's rail welders are qualified in all aspects of track welding and are fully compliant to work on all rail networks across Australia.

Below is a list of its welding capabilities:

- Thermit & Railtech Welding
- Flash Butt Welding
- Groove Rail (Tram rail)
- De- Stressing Specialist Crews (Labour And Welding)
- Arc Welding Teams
- Crane Rail Welding

The Track Construction Division which is headed up by Richard Needham – Rail Manager and Casey Mitchell – Operations Manager – is beginning to reap the benefits of Global Rail Australia's continued investment.

Track and Welding teams have recently been engaged by Laing O Rourke/MTM on a Year 3 Lease agreement, which will see our resources being deployed on the MTM Network.

Separately, we also have agreed terms with MTM to support their Maintenance Division.

The continued rollout of the Track Construction Division will see engagement with all Tier 1 Main Contractors and Railway Operating Companies over the coming months.

Global Rail Australia's detailed understanding of track construction maintenance and renewals has been derived from years of experience and its in-house expertise covers every aspect of track construction maintenance and renewals from component exchange through to major re-railing activities.

Its in-house specialist teams have successfully delivered individual projects for a vast range of clients, providing bespoke solutions to meet their requirements.

Services include:

- Heavy and light rail construction
- Turnout construction and installation
- Track reconditioning
- Track welding
- Tie renewal
- Track formation
- UTX installation
- Track maintenance
- Rail defects
- Track resource supply



Global
Rail
Australia

Project Updates

ARTC- Victory RD Drainage Work



Global Rail Australia are currently undertaking their first job with ARTC.

The works involve the construction of a new 150 LM drainage within rail corridor & laying 150 m of 250 diameter AGI drain.

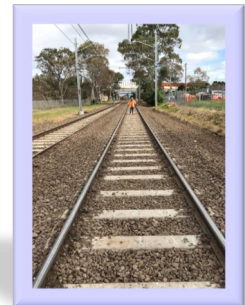
Saw, cut & breakout existing kerb line and install new concrete reinforced vehicle crossing to Moonee Valley standards including making good to new kerb line and entrance.



Laing O Rourke LY3 Track Renewals

Global Rail Australia has been supporting Laing O'Rourke with its LY3 renewals supplying track resources and Welding.

The scope of works have been Station Pit renewals, rerailling and level crossing upgrades. All these works have been carried out in 56 hr occupations.



Global Rail Australia have been assisting Metro Trains Melbourne with their asset inspection.

The team have been providing Safe Working and Work Group Supervisor during weekend and midweek occupations.

The scope for these works is increasing in the New Year and we will be supplying Civil and Track resources.

Sandringham Project



On behalf of Metro Trains Melbourne (MTM) **Global Rail Australia** have been contracted to construct 14 new car parking bays, landscaping works, pit install and conduit run.

The team have already loaded out 200m3 of soil and placed 150m3 class 4 rock in preparation for the kerb install.

Once complete, we will then line mark and start the prep works for the landscaping and planting.



Congratulations

Aidan Kelly Promoted to MEP Director at Global Rail Services

Global Rail Services Limited (GRSL) is pleased to confirm the promotion of Aidan Kelly to MEP Director. The Rail and Infrastructure contracting specialist which delivers the design and project management of these specialist services, is delighted with this appointment. It is full testament to the commitment and passion that Aidan has provided during a career which spans over twenty years in the Mechanical, Electrical & Power sector. His role going forward, will involve autonomously running our in-house MEP Division -a core competency within the company – whilst liaising with the other business divisional Directors.

Whilst an ability to bring in additional business is always welcome; the role will concentrate on growing further and developing the existing engineering capability of the organisation with a competent and efficient in-house MEP team, delivering cost effective solutions to the various existing and new projects.

Ivan Holloway, CEO of Global Rail Services also added:

“Aidan is a qualified professional with suitable certifications and accreditation to reflect his seniority in the industry and has spent a number of successful years with us, supporting the management and delivery of Mechanical, Electrical & Power works for our customers.

This new role is well deserved, and we look forward to him developing our MEP offering substantially over the coming years.”



Global Rail Services Appoints Contracts Manager



Global Rail Services Limited (GRSL) , has appointed Paul Connell as a Contracts Manager.

Paul will be responsible for the management of multiple project teams to ensure the safe delivery of projects on time and within budget to the stated quality and customer's satisfaction.

Paul is a Civil Engineer by training, having studied Civil Engineering at Loughborough University, achieving a BEng (Hons) in Civil Engineering with a diploma in Industrial Studies. He then continued his personal development and in 2017 became a Chartered Civil Engineer.

Paul's engineering experience covers a number of industries including Rail, Civil Engineering, Construction and Utilities over the past 20 years.

Prior to joining GRSL he was a Project Manager, working on various building, rail, roads, bridge, commercial and airport projects.

General Manager Tom Staunton commented on this appointment by saying:

“Paul's all-round experience will add value to our business. His experience of the complete project lifecycle from pre-qualification and bid preparation, through to project execution and completion, will enhance our offering further. We all look forward to working with him.”

Project Updates

GSMR Works

Another new mast site nearing completion in Broombridge, Co. Dublin. This was a difficult site with only pedestrian access available during the day. All plant and material had to be delivered and removed by rail under full possession.



THANK YOU TO ALL THE TEAM

Global Rail Services Ltd is part of the Global Infrastructure Group and is a leading Irish provider of design, construct and commission services for clients across a wide range of engineering and infrastructure sectors

Global Rail Services
Unit 516a Grants Rise
Greenogue Business Park
Rathcoole, Co Dublin
D24 FH56
Ireland
+353 (0) 1 458 8540

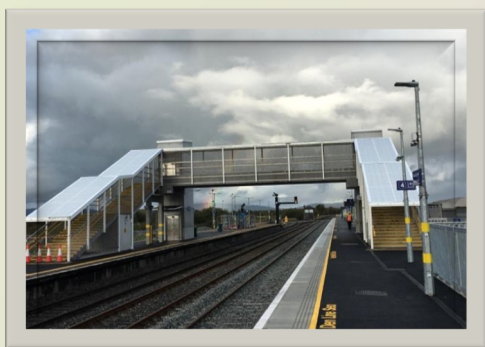


Global
Rail
Services

Project Updates...

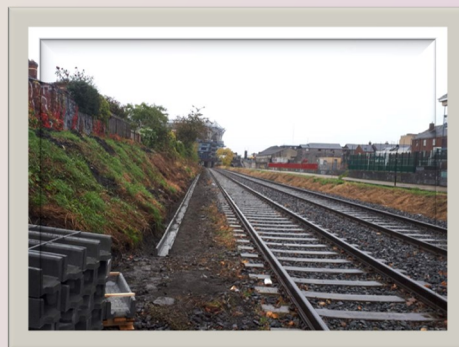


Ballymanus, Co. Donegal
Piling works complete
New Mast compound complete
Awaiting installation of new mast.



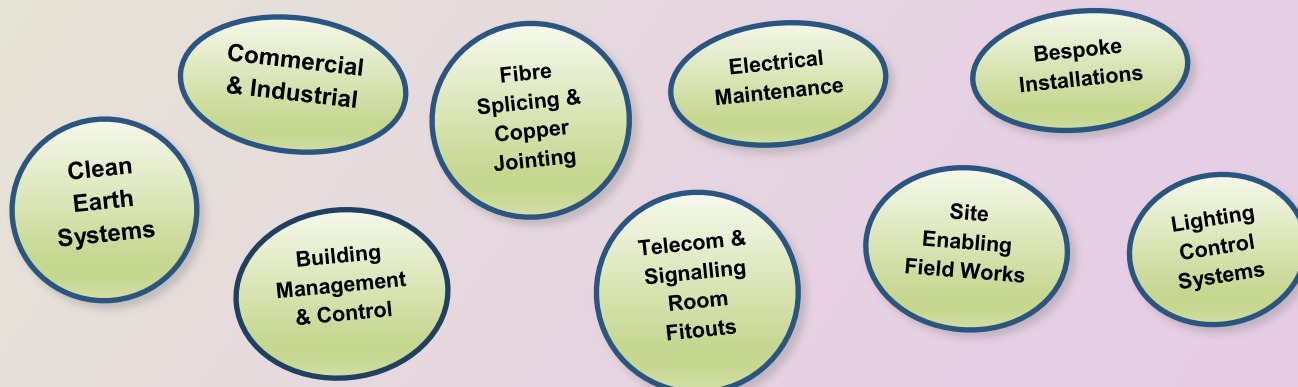
Limerick Junction Platform & Footbridge Works

New Kalwall roof finally arrived on site and installation complete.



Whitworth Road, Co. Dublin
Mast route works to the new mast site underway

GRSL Are Deployed On A Wide Range Of Rail, Utilities & Energy Projects Including



PHOTOVOLTAIC (PV) INSTALLATION

Generate Your Own Clean Energy
Cheaper Electricity Bills
Improve Your BER (Building Energy Rating)
Reduce Your Emissions

What is Solar Photovoltaics? (Solar PV)

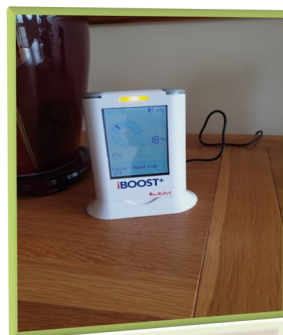
The term 'solar panel' is often used interchangeably to describe the panels that generate electricity and those that generate hot water.

- Solar panels that produce electricity are known as solar photovoltaic (PV) modules. These panels generate electricity when exposed to light. Solar PV is the rooftop solar you see on homes and businesses.
- Solar panels that produce hot water are known as solar thermal collectors or solar hot water collectors.

Solar PV panels capture the light from the sun and convert it into the electricity that is used in your home to power your TV, kettle, toaster, phone charger, radio, oven, and so on.

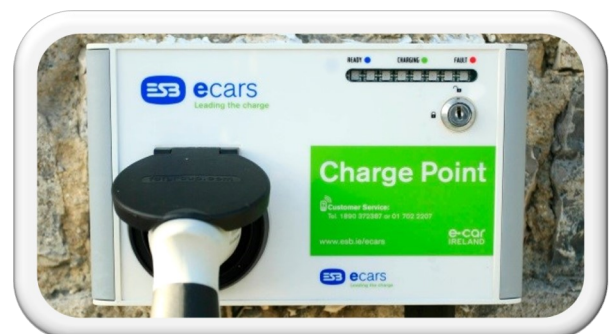
Global Rail Services are now installing the solar PV systems in domestic houses all across the country. As there is a grant available to home owners for up to €3800, these systems are becoming very popular.

Global rail services have a number of crews that are specialised to carry out these PV installations.



ECAR CHARGERS

Global Rail Services are delighted to announce that they have won the first Ecar charger installation at Inchicore, Co. Dublin. This Ecar charging point is the first of a roll out across the country, they will be installed in every train station car park, depot and offices across Ireland.





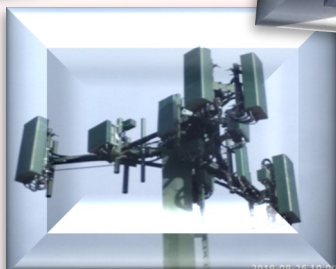
GRA NETWORKS - VT20579.01- NAHL-NATONE HILL CMTS

This was GRA Networks first Telstra 5G site upgrade in Tasmania deploying teams from our Victoria office at short notice for a critical delivery for our new client CYIENT. The team pulled out all the stops to ensure that this site was delivered and on air by the end of Sept. Telstra and CYIENT have both expressed their appreciation for all the effort put into this delivery by GRA's team and they were very happy with the end result.

The scope involved -

- ◇ Installation of new 5g Air Antenna system
- ◇ Swap out 1800/2100/2600 RRUs
- ◇ New 700/850 TMA's
- ◇ Installation of new Hybrid feeders and breakout boxes.
- ◇ Internal installation of new BTS equipment housed in 1 existing & 2 new Pathfinder cabinets.
- ◇ Installation of SPD box and 6673 Router with 4G cutover.

Well done to all involved with the planning of this site as we had less than 48hrs to make it happen and everyone in the office and field pulled together to ensure our customer expectations were met.



BRIGHTON BEACH STATION

A victrack tilt pole was reported as being in an unsafe condition and had potential to foul 2 live tracks and posed a danger to members of the public.

GRA were engaged to conduct an emergency repair on the pole where the pins had sheared off leaving the pole listing at a 15 degree angle. At the time, there were no options to access the area with any plant so GRA had to come up with a solution to make the pole safe.

As an interim solution, and to ensure the safest method was used, it was decided to install 2 x large steel plates with threaded rods to pull the pole back into an upright position and fillet weld the tilt section of the pole to further ensure stability.

All went well and the pole was made safe. GRA have now been engaged to come up with a plan on how to remove the pole permanently which will be done imminently.





ONGOING WORKS...



GRA Networks are currently active on several jobs for the Irish Aviation Authority (IAA).

The new Irish Aviation Authority ATC tower at Dublin Airport will facilitate parallel runway operations by 2021. Excluding a number of radio masts and chimneys, the new tower will be one of the tallest structures in Ireland.

GRA Networks are the designers and installers for the works involving the installation of internal comms in the air traffic control tower roof at Dublin Airport.

Mount Gabriel is a mountain on the Mizen Peninsula situated immediately to the north of the town of Schull, in West Cork, Ireland. Mt. Gabriel is 407m high and is the highest eminence in the coastal zone south and east of Bantry Bay. A roadway serving the radar installations on the summit is open to the public. GRA Networks are currently installing new dipole antennas, stay wires and fall arrest systems to new 12m wood poles on Mount Gabriel.



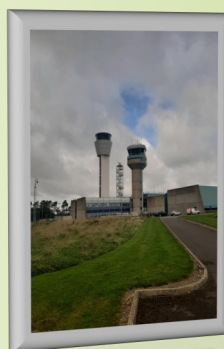
On behalf of ESB Telecoms, **GRA Networks** have been tasked in the undertaking of the maintenance of 34 sites in North Leinster and surrounding areas.



3IRL have tasked **GRA Networks** with new site builds to incorporate Ericson equipment into their network. These include new site builds and existing sites for upgrades.



Imagine 5G rollout project continues with **GRA Networks** heavily involved with new site builds and existing sites being upgraded to 8T8R status.



Our vision is that everyone arrives for work healthy and leaves for home safely, everyday.



Congratulations



Congratulations to Avril O'Neill (GRSL Administrator)
& her partner Seán, who welcomed a little baby boy, Theo,
on the 20th October 2019.

Both Mum & baby are doing well.

Congratulations From All The Global Family



**Global Rail Services
Driver Safety Awards were
received by the following:**

- * Rob Reid (June) *
- * Tim Mullane (July) *
- * Anthony Mulcahy (August) *
- * Alan Kirwan (September) *
- * Damian Hennessy (October) *



Rail Live is the only exhibition bringing the entire rail industry together
in a real railway environment.

With over 200 exhibitors and 6000 visitors each year, it is the one event to
showcase the UK rail industry to the world.

Global Rail Construction

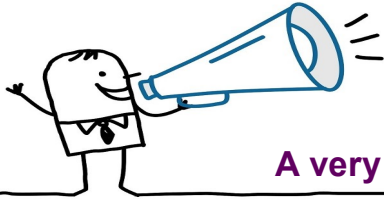
are pleased to announce we will be exhibiting at next year's

**Rail Live Exhibition which takes place on
Wednesday 17th & Thursday 18th June 2020.**

SHARE YOUR NEWS

Tell us what's happening
or send us your pictures
or videos.

globalnews@grcl.co.uk

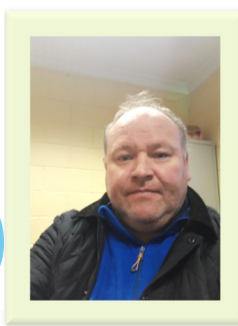


Staff Updates

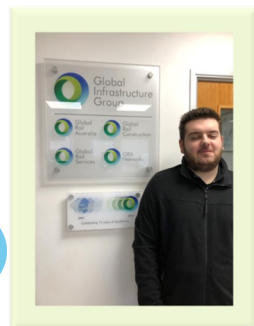
A very warm welcome to our new family members



Michael Byrne
Telecoms Operative



Ray Hayden
Health & Safety Manager



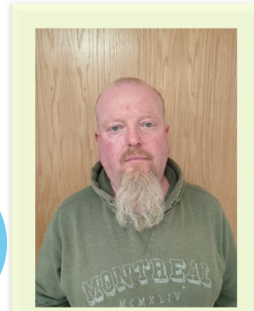
Luca Russo
Junior Trainee Electrician



Damien Hennessy
Telecoms Operative



Mark O'Connor
Telecoms Operative



Paddy Kehoe
Telecoms Operative

Word Search

**JUST
FOR FUN...**

**Good
Luck**

The London Underground

R A P I D T R A N S I T S U R F A C E Y
S N O I T A T S Q B W X I T V H U D A A
O N E E I G H T S I X T H R E E W W R W
P M K R I V E R T H A M E S B A L K O L
U L C I B N Y D N Z S L E T R I R Y V I
B O A H U U G D I V G E P D A O S B M A
L N R S N D C T T Q W L J R W T S O T R
I D T D D E Y K N H E O D T E O D C M N
C O X R E K R S I H H N E R J G T E T A
D N U O R G R E D N U N O D N O L E H T
P T S F G S A K S O G O E I Z E Z A S I
A R K T R R M T R T T H K B V I R K L L
S A H R O C O G F J S D A E U R Z Q E O
S N Z E U N R U B Y E R N M Y T T W N P
E S A H N E N A N T M L I B S M E S N O
N P W R D U I R I D I U E F A H A H U R
G O U N B Q B N C N E C C V X Y I N T T
E R U J X C U H E S K L X E S S E R G E M
R T Z X I H O S O M E T S Y S O R T E M
S K X N O D N O L R E T A E R G E G Z Q

BUCKINGHAMSHIRE
FIRST
LONDON TRANSPORT
METROPOLITAN RAILWAY
NETWORK
OYSTER
PUBLIC
RIVER THAMES
STATIONS
THE LONDON UNDERGROUND
TRACK
UNDERGROUND
UNITED KINGDOM

EDWARD JOHNSTON
GREATER LONDON
LPTB
METRO-SYSTEM
ONE EIGHT SIX THREE
PASSENGERS
RAPID TRANSIT
ROUNDEL
SURFACE
THETUBE
TUNNELS
UNDERGROUND RAILWAY

ELEVEN LINES
HARRY BECK



The World's Biggest Coffee Morning is Macmillan's biggest fundraising event



People all over the UK hosted their own Coffee Mornings on Friday, 27th September. The first ever Coffee Morning happened way back in 1990. It was a rather small affair with a simple idea: guests would gather over coffee and donate the cost of their cuppa to Macmillan in the process. It was so effective, it continued the following year – only this time nationally. Since then, Coffee Mornings have raised over £200 million for Macmillan.



THANK YOU

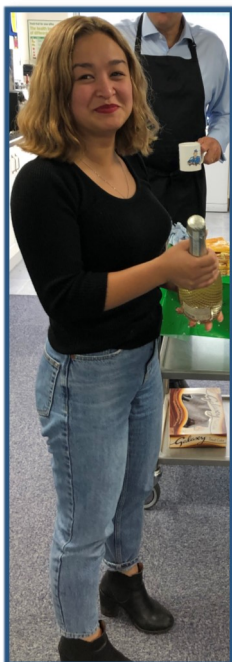
Thank you for everything you did to help make Coffee Morning a huge success. Together we raised
£300.00
Every single item baked and every coin dropped in a box has helped change lives.



Our Global Rail Construction Family hosted their own Coffee Morning and raised an amazing **£300!!**

Thank you all so much for your kind contributions.

Thank you also to our three Baristas - you did a great job.

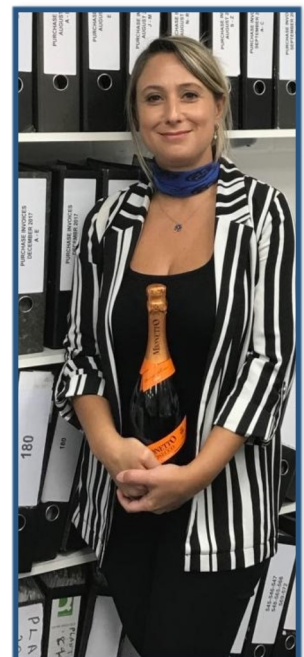


On behalf of her Mum, Carmel ((L) GRCL Administrator) collected a bottle of prosecco for making the most amazing Black Forest Gateau –
Thank you Mrs Juanillo.

Tuba ((R) GRCL Accounts Payable Clerk) also won a bottle of prosecco by guessing the nearest quantities of cherries in the pie.



Congratulations Ladies



globalnews@grcl.co.uk



SHARE YOUR NEWS

Tell us what's happening or send us your pictures or videos.



A very happy **30th** birthday to Adam Wisker (GRCL Quantity Surveyor). Adam celebrated his milestone birthday with his family & friends.



A very happy **50th** birthday to Nick Turner (GRCL Head of E&P). Nick celebrated his milestone birthday with his family & friends.

Congratulations from The Global Family

Muhammad Majid (GRCL Planning Manager) celebrated the birth of his daughter Hannah Majid Vaniwal with family, friends and some of the his Global Rail Construction work colleagues. The dinner was held on Saturday, 21st September at a Banquet Hall in Luton, Bedfordshire, which was of traditional Asian style cuisines.

Aqiqa is an Islamic tradition that is celebrated on the occasion of a child's birth.

Majid stated ***"I would like to thank all those who sent their best wishes, and to those who celebrated this special occasion with myself and my family."***

Congratulations To The Majid Family



Left to right—Majid, Sayad, Andy, Henry, Mrs & Mr Sean Donaghey, Mrs Majid and baby Hannah

CHARITY EVENT



Our Managing Director, Marco Lombardelli, decided to run the Herts 10k on the 13th October 2019 to raise much needed funds on behalf of Rennie Grove Hospice care. Rennie Grove Hospice Care is a charity providing specialist care and support for adults and children with a life-limiting illness in Bucks and West Hertfordshire. Through their unique Hospice at Home service, available day and night, and a range of day services they support patients to

live the best quality of life they can with a choice about how and where they are cared for towards the end of life.

They are also here for the families of their patients, ensuring that everyone can receive the right support, when they need it, to help them make every moment together matter.

All donations were greatly appreciated and every penny will make a difference to somebody's end of life care.

Marco raised over £2.5k for this worthwhile cause.



Well done Marco, we are all very proud of you



Global
Infrastructure
Group

A Leading Provider Of Turnkey Solutions
For The Rail Industry



Railway
Construction



Civil
Engineering



Telecomms



Multi-Utilities



Power
Networks



General
Construction



Design and
Consultancy

Combining technical and innovative excellence with a
real passion for detail and safe delivery of projects

www.theglobalinfrastructuregroup.com