



Global
Infrastructure
Group

Issue 22 2020

GLOBAL NEWS



In This Edition.....

- * **Project News**
- * **New Starters**
- * **Celebrations...**
- * **A Day In The Life...**



globalnews@grcl.co.uk

Foreword

Welcome to another edition of the Global News Magazine, and I am sure you will all agree that this publication provides valuable updates to the Global Infrastructure Group and is a fantastic mechanism by which the different organisations can keep up to date with what is going on across the GIG Family.

It is evident from reading the updates from across the group in this edition that our project teams are involved in the delivery of some really exceptional works. All being delivered safely across various climates, demanding environments and not to mention time zones!

This is a testimony to our behaviours, experience and in particular, our people who support and continue to enhance our service delivery across the group. Whilst enjoying our successes there is always a need to continue improving our business and our people so that we will always be considered for key opportunities and become a partner of choice to our clients.

As a group we believe that it is vital to continue to invest in and develop our staff to enable us to deliver tomorrows expectations, today. Global Rail has always empowered its people to grow, develop and achieve their full potential whilst providing the platform and support to enable this growth potential. We take our responsibilities seriously and operate a policy that incorporates a programme of continuous improvement and on-going staff education and development.

I am pleased to see that our Apprenticeship and on-going staff education programmes are going from strength to strength and this investment will continue as we seek to develop the next group of young professionals into the business. These programmes cannot be overstated in their importance to the future of the Group and it is very satisfying to see how a number of our staff that have been through these schemes are now an integral and influential part of our Project Delivery Teams across the business.

Of course, none of the above and the success that the Company has experienced to date could be fully appreciated without the full support, hard work and commitment of our staff, supply chain and partners who often face difficult challenges, work through adverse weather conditions and often sacrificing time with their families to ensure our business objectives are delivered professionally, safely and in a consistent manner.

We are particularly proud of our history to date and in particular how our wider team continues to execute our objectives and responsibilities in such a positive, pro-active and inclusive way. This is real testimony of our commitment to our core principles and culture enhanced by working together and with others to achieve our defined objectives.

It is vitally important that we as the wider GIG family remember that each day our staff are working in places where the effects of climate change have an immediate impact on our working environment, whether this be the effects of the bush fires in Australia or the storms and flooding recently experienced in England and Ireland. As a business we must constantly challenge and review our processes and working practices in order to reduce our impact on climate change.

Our safety record once again is testament to the fantastic work our QSE team, management, safety coaches and all our people do in a very professional and diligent manner throughout the year to create and foster a working ethos at GIG that is second to none. I have enjoyed seeing our Safety Coaches receive their certificates of recognition for the great work they do day in and day out and know that this will continue into the future.

We are now going in to a particularly busy period across the group both in terms of tendering opportunities and on secured projects and this is where historically we are able to excel as a business as we work collaboratively as part of a greater team in a responsible, passionate and professional manner to collectively deliver a first class service to our clients.

Thanks to you all for your commitment, determination and dedication across the whole Group and as a result we are going from strength to strength at a time when we are looking to expand upon our discipline delivery capability.

Hope you enjoy the read

Jim Cuell

**Passionate**

Committed in heart and mind to whole-heartedly embrace our core values and culture, without exception.

**People**

Growing our organisation from within, promoting and empowering our people, inspiring them to be the best they can be.

**Professional**

At all times we act with integrity, providing quality service, reliably and responsibly.

**Teamwork**

Working collaboratively whilst supporting and respecting each other's views.

**Responsible**

To consistently deliver quality, on time, safely and to budget whilst protecting our communities and the environment.



Mission & Vision

**Using the best mix of technology and tradition,
The Global Infrastructure Group empowers its workforce to deliver to
our clients the best possible standards of workmanship within the UK
rail industry at a competitive price.**

Happy New Year!

validium.com

Your EAP is here to support you throughout 2020



Support for emotional concerns



Guidance about a healthy lifestyle



Information on managing your money



Help with legal matters



Manager Support Helpline

Remember you can call Validium for support on a variety of issues -
or go online at validium.com to check out vClub



0800 3 58 48 58

Outside UK: +44 141 271 7179

For online support join vClub at validium.com

NGT Service: 18001 + helpline number or download NGT Lite App. Ensure your device is connected to Wi-Fi to run NGT Lite.

 **validium**
IMPROVING MENTAL HEALTH

My vClub – Available on App Store & Google Play



Congratulations



Global Rail Construction are pleased to announce that Senior Engineer and Contractor's Responsible Engineer (CRE) Kenneth Qiu, has passed his recent professional review with the Institute of Civil Engineers, becoming a Member of the Institute of Civil Engineers (MICE).

Kenneth joins an elite group of professionals who design and build our railways in the UK and is now able to formally introduce himself as a Chartered Civil Engineer.

Achieving an ICE membership is a significant milestone in an Engineer's career.

We asked Ken how he feels now that he has achieved this latest goal: ***"All the hard work has paid off. I feel very privileged and proud to have achieved this status."***

Thanks to everyone who has supported me along the way towards this achievement."



At Global Rail Construction, we encourage and support the development of all our staff members. So, we are delighted that Ken has become another professionally recognised member of our growing design and construction team.

The Global Infrastructure Group's has a vision to be the leading infrastructure company in the sectors we operate, benefiting the communities we serve, the people we employ, and our investors. Our success in realising that vision is directly connected to the quality, talent and energy of our team.





Global
Rail
Construction



Global Rail Construction Limited

Installation Teams were busy over the Christmas period undertaking the possession works at London Bridge.

Supporting BAM Nuttall, the GRCL Team supplied, delivered and installed 350mtrs of TTS 200 trough and dividers. Ensuring compliance with the HV Assessment, the GRCL Team then slewed all DC Traction cables into the new routes and secured the trough lids.

*A Job Well Planned
&
Delivered*



Our vision is that everyone arrives for work healthy and leaves for home safely, everyday.



GRCL Secures Steel Sheet Piling Contract for BAM

Global Rail Construction Limited (GRCL), has secured a new railway civil engineering project at New Road, Welling on behalf of partner BAM. The project is located between St Johns and Crayford Creek on Network Rail's South East Route rail infrastructure.

The core scope of GRCL's works covers the supply and installation of 8m long steel sheet piles in order to construct a 200m long cess wall to stabilise the railway embankment.

These works will be undertaken during a nine-day closure of the lines in February 2020. The full scope of works will be completed by June 2020.

Over the years, the embankment has shown signs of soil creep and localised slumping, resulted in tilted and misaligned troughing routes and ravelling of ballast from the cess shoulder onto the slope face. It is reported that the track is frequently tamped to maintain line and level. So GRCL's scope also covers the reinstatement of the ballast shoulder and support to the cess, via the implementation of a lightweight cess support system.



Global Rail Construction are currently undertaking enabling works to prepare for their activities prior to the blockade. These works cover:

- Preparation of all related Risk Assessments, Works Package Plans, Task Briefing Sheets, Programmes and Methodology statements
- Supply, position and servicing all necessary, temporary fencing, office, welfare and ground protection for the compound on the wide pavement/road.
The Cess Wall Construction piling work commenced on 15th February 2020 and there shall be two follow up possessions with engineering trains to complete the Cess Walkway in May and June 2020. Works cover: Cess Wall Construction – Blockade
- Supply and Install 8m long steel sheet piles to construct approximately 200m of cess walling, 3m from the nearest running rail on the Downline between the two LOC Staging.
- Temporary relocation and protection of the existing S&T cables
- Backfilling the existing cess walkway
- Laying a new Concrete Cable Route
- Relocating S&T cables into new troughs
- Fixing handrails

Global Rail Construction Ltd
is a Principal Contractor and a leading UK provider of
design and build services to clients in the rail and
transportation sector

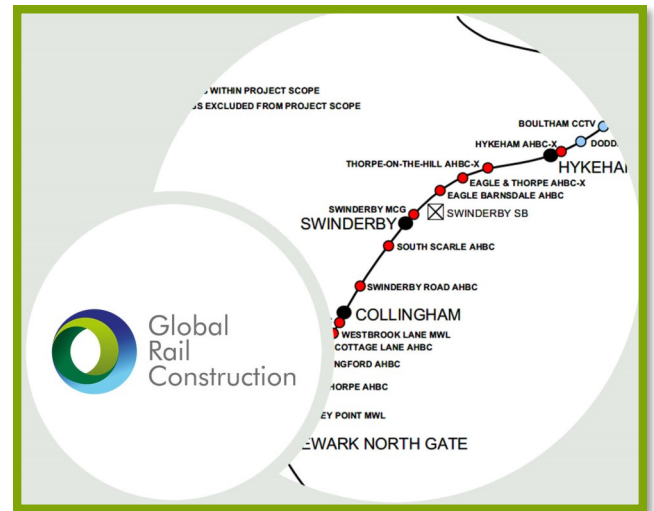


Global Rail Construction Limited's Design Team Picks Up Award

We are delighted to announce that **Global Rail Construction Limited's** design team have been awarded a contract with Alstom covering the GRIP 4 civils design for the Swindby Resignalling Scheme.

The design programme is now underway, with Scheme Plans and Level Crossing Ground Plans due to be submitted in July and the completion of GRIP 4 in September 2020.

The team have successfully supported Alstom on a number of schemes in the past, including the Design and Build civils programme for the East Notts Modular Resignalling Scheme GRIP 5-8 works, which covered eleven Level Crossings. The Swindby Resignalling Scheme comprises the Resignalling and Recontrol of the Swindby Signalling area. It will include the conversion of 4 Level Crossings and the Renewal of Swindby Road AHB to AHB- X.



GRCL's GRIP 4 Civil Design works will cover:

Survey

- Non-intrusive site walkouts to areas of all works affected by scope
- Confirmation if any local services are required to be modified/rerouted
- Geotechnical Design/Ground Investigation report for all renewed/upgraded level crossings
- Geotechnical assessment surveys to reduce risk of unexpected ground conditions for new signal and locations.
- A Topographical survey of all renewed/upgraded level crossings, and a sample of REB's, PSP, ASP, and new signal locations.
- IBJ Surveys
- Environmental / Ecological surveys

Design

- Provision of a Design CRE for design authority sign off
- Civil design submissions (Forms 001/002 and 003)
- Design Certificates
- Details, calculations, drawings
- AFC Designs accepted
- Input into DRN responses
- Design Logs
- Designer Risk Assessments

The GRIP 4 design submissions for F001's and F002's will be grouped in accordance with the technical content i.e. signal bases will have their own submission, level crossing ground plans will have their own submission and at each design stage an IDC meeting will be carried out.

The design programme will be directed and managed from award to completion by the GRCL's Design Manager. The Design Manager and Design team will be supported by Head Office resources. The team will be supported by a Ground Plan Designer, who will be embedded into the Civils Design Team. This will help to ensure that the ground plan AIP submission will have considered the necessary civils elements, eliminating the potential for issues that can occur when the design processes are separate.

Global Infrastructure Group's design and consultancy division constantly adapts to new technology and innovation.

State-of-the-art computer-aided design and simulation systems are used to assist with analysis and design, providing significant advantages for clients by lowering project costs and reducing programmes timescales.

Our in-house activities include:

- Civil engineering and structural design
- Mechanical, electrical and power design
- Telecoms design
- CAD drafting and design including 3D modelling
- Independent design reviews



Global Rail Construction Ltd
is a Principal Contractor and a leading UK provider of
design and build services to clients in the rail and
transportation sector

Redhill Station – Thameslink Signal Sighting Limitations Project



Global Rail Construction Limited has successfully completed its railway civil and structural engineering scope of works at Redhill railway station for WS Atkins, which forms part of the Thameslink Programme Signal Sighting Limitations project.

The work scope included the preparation of the existing platform for installation of a new modular platform extension, installation of a cable route through the platform, installation of new RA (Right Away) indicator and concrete base, new blockwork, tarmac and necessary works to existing copers, slotted sleeper installations and IBJ (Insulated Block Joints) recoveries and renewals.

GRCL managed all programme and site logistics for their works through their own dedicated Project Delivery Team. This core capability and a multi-disciplinary workforce enabled the team to complete this scheme to meet the client requirements.

The works were delivered during a combination of midweek days and nights, Saturday nights and a number of 28/52 hour railway possessions at the end of last year.

This project is part of the new 8 and 12 car Class 700 programme for Train Operator GTR, being enhanced by Network Rail and is to support the requirement for providing the necessary signal sighting at Three Bridges, East Croydon, Brighton and Redhill railway stations.

Global Rail Construction are also completing civils works at Three Bridges as part of the same programme.



Global Rail Construction Ltd
is a Principal Contractor and a leading UK provider of
design and build services to clients in the rail and
transportation sector



CLOSE / GOOD CALLS 2019

Global Rail Construction Limited recognise that our Health and Safety Management System should embrace in a holistic way; the interactions between the working environment; equipment; systems and procedures as well as the people in order to provide a commitment-based safety environment.

The commitment to eliminate all hazards and mitigate risks across our projects demonstrate a clear commitment to ensuring that **'Everyone Arrives for Work Healthy and Leaves for Home Safely Everyday'**.



Our Close Call / Near Miss reporting serves as a measure to enable us to monitor any unsafe act or unsafe condition that may result in an incident, personal injury, or damage to property and equipment.

These tools enable all operatives to raise close calls in real time. The tools also allow our workforce to respond to events more quickly and helps cultivate a culture of proactive, preventative safety, rather than reactionary risk management with potential for more serious consequences.

Furthermore, our close call reporting applies the fair culture process and if desired by the persons reporting, can be anonymous. In this case, it provides a reporting culture that reinforces every opportunity to identify and control hazards, reduce risk and prevent harmful incidents.

The benefit of Close/Good Calls reporting cannot be overemphasised.

These have been identified to include;

- ◆ To identify trends and provide necessary improvements to our safety management system
- ◆ To monitor changes in safety over time by constantly adapting to the conditions that change gradually over time and protect more unexpected events
- ◆ To prevent potential accident/incidents in a timely manner before they occur.

While we talk about the positives of Close/Good Calls we also acknowledge the role that our Safety Coaches play to make this initiative a success. Our Safety Coaches are very dedicated to ensuring that our workforce and anyone working on behalf of the business are motivated to support this initiative.

To show our appreciation, the Company Directors offer a token in the form of a £100.00 gift voucher and a Certificate of Recognition to say **'Thank You'** to our committed and dedicated Safety Coaches across the business.

Please see below persons receiving their voucher & certificate.



Henry Bonuah (R) (GRCL HSE Manager) presenting Gary McMullen (GRCL Supervisor) with his voucher and certificate



Mark Jones (GRCL Operative) in receipt of his voucher & certificate.



Chris Noble (GRCL Supervisor) in receipt of his voucher & certificate.



Vas Vancea (C) (GRCL Project Manager) presented Cristian Maradin (L) (GRCL Supervisor) & Iosif Vadas (GRCL Supervisor) with their vouchers & certificates.



Global
Rail
Construction

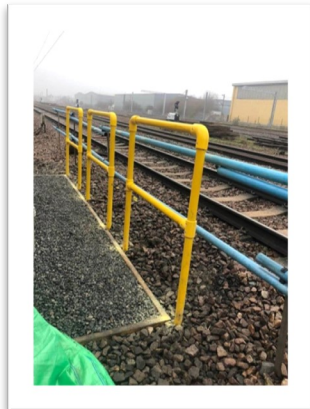
ONGOING WORKS...

Global Rail Construction

are currently working with VolkerRail on the West Ruislip Northolt Corridor project. Civil Engineering works include installing H Bases, cast in-situ PHCC bases, handrail surrounds, Location Case suites and an Under Track Crossing (UTX). Works have been carefully co-ordinated so that they can be undertaken behind a fence to create a safe green zone during the midweek. Weekend works will be completed under possession.

GRCL have been working collaboratively with the client team at VolkerRail throughout the programme of works, to ensure that the delivered works meet the project requirements.

The scheme is required as High Speed 2 is planning to construct a new High Speed Railway between London and initially Birmingham. A new tunnel is planned between Old Oar Common and West Ruislip which will be sub-surface through the Northolt Corridor, the footprint of which impacts upon Network Rails UpSide North Sidings, requiring the recovery and relocation of this equipment.



Our Barking Riverside project civils teams have been progressing well with their programme of works. They have successfully installed 150m of GRC troughing route at Renwick Road and completed a manhole installation for DB Cargo. The team have also installed concrete troughing at Eldred Road, where they had to break out concrete bases and demolish a wall to enable the installation.

Handrail installations at various FSP's and signalling locations have also been completed.

Global Rail Construction Limited are delivering E&P and Ancillary Civil Engineering works for the joint venture of Volker Fitzpatrick and Morgan Sindall (VFMS), who were successful with the award for the construction of the 4.5 km extension to the Gospel Oak to Barking line.



Global Rail Construction has proven experience in delivering some of the most exciting projects across a diverse range of service sectors. Our in-house capabilities, our scale and our supply chain partnerships have allowed Global Rail Construction to deliver complex multi-disciplinary projects that make a positive difference to our clients, across the UK infrastructure industry that we serve.

Global Rail Construction
Units 18 & 20
The io Centre
Hearle Way, Hatfield
Hertfordshire, AL10 9EW
+44 (0) 870 990 4074

A DAY IN THE LIFE OF

In this issue, we meet Joe Lomonaco, Procurement & Logistics Manager for Global Rail Construction. We find out a bit more about him.....

What is your best childhood memory?

Playing football late into the night

If you had a chance for a “do-over” in life, what would you do differently?

Less truant

What do you feel most proud of?

All my children

What is your favourite music?

I Like all genres; but Bowie is my favourite

If you could travel anywhere, where would you go and why?

Japan because I like the culture & scenery.

What teacher in school made the most impact on you and why?

Mr Hosey (History teacher); he was strict.....

What was one of your most defining moments in life?

The births of my children (*City winning the league don't tell her indoors...*)

Why did you choose this profession?

Job for life they said to me

Who do you most admire in life?

My Mum & Dad

What is your strongest personal quality?

Very helpful to my eternal detriment

What was your most embarrassing moment?

Getting drunk at an 18th birthday party - highly embarrassing...

If you could witness any event of the past, present, or future, what would it be?

Liverpool *NOT* winning the league

What is a skill you'd like to learn and why?

Joinery - so I could build a man cave

What does a perfect day look like to you?

Meet my friends for breakfast, watch football, have dinner with my family.





Global Rail Australia Secures Track Work Contract for Tasrail

Global Rail Australia Pty Limited is delighted to announce the recent award of a Track Work Contract on behalf of Tasrail – Tasmania's vertically integrated, short haul, freight rail business, who have been responsible since 2009 for upgrading, maintaining and operating Tasmania's freight railway network and supporting its infrastructure.

Similar to the State's road network, the rail network is a critical piece of infrastructure that requires maintenance, to ensure the safe running of trains.

Global Rail Australia's contract is on behalf of Tasrail's IIP2 Programme Management team, and is based upon Category 1 Track Defects, which covers rectification and associated works including the following activities:

- Re-sleepering
- Re-railing
- Short Rail Inserts (closures)
- Stressing Modules x 2
- Ballast Cleaning (mud holes)
- Removing Dipped Welds
- Repairing Joints and IRJ's
- Repairing Twist Faults
- Refurbishing, Removing and Replacing Accommodation Crossings
- Heavy Turnout Maintenance
- Alumino Thermic Welding

Global Rail Australia's Track Construction Division – managed by Richard Needham – will be providing a turnkey service for Tasrail, with full project management, site management and supervision for the duration of the contract.

As part of its social policy, Global Rail Australia will be supporting a local procurement programme and engaging where possible with SME suppliers to source both components and services locally. The plan is to ensure that suitable, local SMEs have the same opportunities when competing with Global Rail's traditional supply chain, for the provision of goods or services to be used for this contract. A very pleased CEO Ivan Holloway said:

"This is an important success for our Track Construction Division and is testament to the hard work and support of the entire team. We look forward to maintaining a safe railway for Tasrail and becoming a partner of choice through a collaborative, innovative and inclusive approach to project delivery."

The company's Track Construction Division specialises in aluminothermic welding, track construction and maintenance, including the delivery of safe working services, inspection and track handback.

Its detailed understanding of track construction maintenance and renewals has been derived from years of experience covering every aspect of track construction maintenance and renewals from component exchange through to major re-railing activities.

Its in-house specialist teams, have successfully delivered individual projects for a vast range of clients, providing bespoke solutions to meet their requirements.

Project Updates

Global Rail Australia



recently expanded its OCS capability with the installation of new Public Information Displays (PID's) on behalf of Metro Trains Melbourne (MTM).

The new PID's were installed at Flagstaff and Parliament Stations, which are two busy stations on MTM's underground system.



The works included the fabrication, supply and installation of the structural steel supports, installation of power and communications supply, testing and commissioning of the new PID installations. MTM plan to roll out the installation of additional PID's at other stations on the network.

Global Rail Australia - Sandringham

Global Rail Australia have just successfully handed over Station St Carpark, Sandringham to Metro Trains Melbourne.

The project consisted of 14 new car parking bays and associated civil works constructed adjacent to an existing substation, including:

- Clear and Fill
- Placing of Subgrades
- Kerbing
- Drainage Works
- Asphalting
- Line Marking
- Concrete Pit Installs
- Conduit Runs
- Modification of Existing Fencing

New pits were installed on adjacent street and new conduit runs ran back to an existing Substation.

A large area of existing garden beds were sacrificed and top-soil imported to plant over 500 plants and shrubs on Station Street.

The project was completed on time and is now open to the public.





Project Updates

Global Rail Australia – Tasmania Cement Shutdown

Global Rail Australia carried out essential track works during the Cement Australia shutdown on the Western Line.

We had a 6 hr window per day for 12 days to complete these works.

Scope was to rerail 1.2 km and complete mudhole works over 500m of track. With no excess for 2 km we developed a methodology that we felt would get this job done in the time frame.

Global Rail Australia utilised plant from interstate which compromised of a 20 tonne ballast bin towed by a hirail excavator to get the ballast to site.

All track works were completed on time and all welds passed NDT with 100 % pass rate.



Global Rail Australia - Essendon

As part of on-going works for Zinfra on 342 Buckley St – Essendon, this week Global Rail Australia poured Slab and Footing footings for New transformer 2, as part of the second phase of the project.

As part of this we completed all conduit runs from CSR trenches and switchroom to the new transformer, SW runs from transformer enclosure to Humeceptor, shuttered and prepped HD Bolts for

new switchyard equipment. 11No pre cast panels will now be installed using a 250T crane late this week, bringing phase 2 of the project to a close.



Global Rail Australia - Stratford - Avon Bridge Project

Global Rail Australia resourced skilled specialised rail personnel to help facilitate the Avon bridge upgrade.

Working with UGL and CPB, Global Rail Australia supervisors managed track renewal works, welded track, surveyed the site/ viaduct along with general maintenance labouring.

The scope of the work included removing 200 m of track of each end of the bridge building new track formation to allow for the track slew. These works were carried out and completed over a 6 day conclusion.



Thank You

Well Done To All Involved





GRA Networks continue to be the chosen rigging partners for the Irish Aviation Authority (IAA) and currently have several major upgrade jobs underway at Dublin Airport. Our most recent installation was a vital piece of equipment which was installed by our senior rigging staff. Antennas which guide the aircraft to safety on the runway were in need of upgrade. This installation was designed and installed by GRA and was successfully flight tested. GRA staff involved received very high praise from IAA senior engineers.

Batch 3 tower climbdowns and maintenance for the ESB is currently underway. We are a few sites into our 31 site project.

GRA are currently on a programme of tower upgrades and maintenance on the rail network, our crews are carrying out site inspections and tower maintenance at a steady pace

GRA are also continuing to assist Imagine Telecoms with its LTE rollout. We are currently heavily involved in 5g installs, link upgrades and 8T8R installations. Our dedicated civils team are keeping up with the pace of our rigging crews.

We recently finished an install of phased harness dipoles for the Irish Aviation Authority to enable them to cover airspace from Ireland to Spain. IAA were very appreciative of our efforts and finished product in a most challenging location.



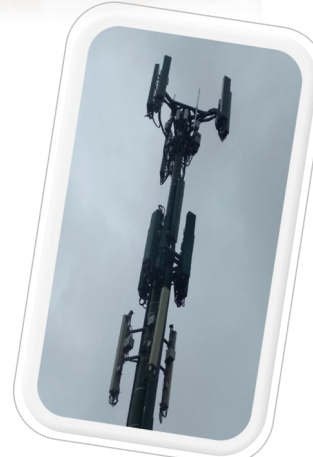
GRA Networks **POINT COOK CMTS - Telstra 5G Site Upgrade**

First Telstra 5G site deployed for our Client - CYIENT.

Scope included a full Headframe swap out to accommodate the new 5g Equipment.

A Low Band Modernisation (3G & 4G) as per D-RAN rack layout & existing Telstra RBS6202.

Provisioning of circuits within the Telstra Exchange and the installation and commissioning of the New 5G equipment.





Progressive Credit Union

The project, located in East Wall Road, near Dublin Port consisted of the relocation of an existing Progressive Credit Union due to the recent sale of the building for re-development. As the main contractor, the project included the co-ordination and management of all building services, turning an existing shell of a building into a fully functional Progressive Credit Union.

Global Rail Services also completed the Mechanical and Electrical design works, in co-ordination with comms, security, fire and IT due to the intensive duration time scale of the 6-week program.

The project has been a turnkey build from start to finish and, under extreme time pressure constraints, will successfully be completed in early 2020.



Project Updates

M3 Parkway Building Works

The overall objective of this project is to

provide for the relocation of the Connolly West Signalling, Electrical & Telecoms (SE&T) department from their existing compound at Connolly Station.

The M3 Parkway Station was identified for the relocation of the SE&T workshop, storage, welfare facilities, parking, maintenance and meeting rooms. The completion of the project will involve the remodelling of the existing station building at M3 Parkway into maintenance offices for the SE&T Signalling West Department.

The works also include the construction of a new workshop and storage building, along with associated road realignment to the station entrance and provision and installation of all new utilities while maintaining access and egress to the M3 Park and Ride facility.



Rosslare Europort Berth 1 Linkspan New Transition Ramp

This contract is for the replacement of the Berth 1 Linkspan upper deck transition ramp. The works are proposed to increase the existing length of the linkspan by up to 1.6m. The estimated quantities for the works are as follows:

- ◆ Supply, fabricate and install sections of steel for the linkspan with an estimated overall tonnage of 38 tonnes.
- ◆ Supply fabricate and install steel wedges.
- ◆ Remove and replace the existing torsion beam.
- ◆ Test and commission of the new linkspan transition.

All works to the upper link span bridge are to be carried out while maintaining access to the lower deck at all times, so that ferries can continue to operate as normal.



CELEBRATIONS



GRA Networks (Ireland) held their Christmas party at Kylemore Karting club.

A very competitive night by all accounts which finished with Robert Reid (PICW Rigger) on top of the podium.

Well Done Robert!



Global Rail Construction Christmas Party
Was Enjoyed By All With Lots of Food & Good Company



Global Rail Australia
Christmas Party

A very Happy 70th Birthday to Rita Sheedy
(GRSL Accounts Department)
who celebrated her milestone birthday in
January.

Rita was surprised with cake & presents, the
celebrations then continued with a special lunch
to mark the occasion.

Rita has been with the Global Family since 2006

Congratulations From
All The Global Family



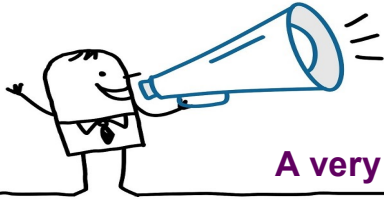
Welcome To The World Baby Zakariyya

Haris Munir (GRCL Assistant Planning Manager) and his wife
Hira, welcomed their third child on the 26th January 2020.

Zakariyya weighed a healthy 7lbs 8oz.

Congratulations To You All



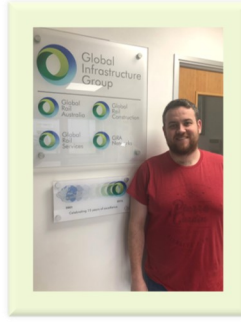


Staff Updates

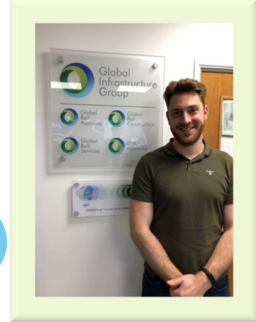
A very warm welcome to our new family members



Haris Munir
Assistant Planning
Manager



Anthony Gallagher
Assistant Project
Manager



Phil Guinan-Browne
Electrical Project Manager -
NICEIC Qualifying Supervisor



Kriston Abbott
Signalling Construction
Manager



Simon Staniforth
Project Manager



Alexandru Timuta
Electrical Estimator



Global Rail Services
Driver Safety Awards were
received by the following:

Paul Woods—Electrical Framework Manager (November 2019)
Gary Monaghan—Telecom Operative (December 2019)
Colm Staunton—Telecom Build Manager (January 2020)

SHARE YOUR NEWS

Tell us what's happening
or send us your pictures
or videos.

globalnews@grcl.co.uk



Congratulations

Colm Staunton (Build Manager GRA Networks) proposed to his girlfriend Deirdre on Valentine's Day (14th Feb) and the happy couple are due to marry later this year.

Congratulations & Best Wishes From All The Global Family



Herts Young Homeless

From our Close Call Initiative
Global Rail Construction Ltd are now supporting
Herts Young Homeless (HYH)

Over the past few years, GRCL have encouraged their workforce to raise close and good calls throughout our projects. To support this further, we confirmed that we would match pound for pound the number of close/good calls raised over a calendar year (max £1,000). Throughout 2019, GRCL workforce raised **704 close calls** and we have therefore decided to donate to a local and fitting cause being **HYH**.



*Henry Bonuah (GRCL HSE Manager), presenting the cheque of £704.00 to **HYH**.*

HYH is a unique charity in Hertfordshire providing services to support vulnerable people. The focus is on preventing homelessness - from education in schools and family mediation through to supporting 16-24 year olds in their first homes or caring for adults of all ages who have mental health issues and housing needs. The **FREE** services empower young people to be able to deal with the difficult situations in their lives, give them the ability and confidence to 'do it themselves' and ultimately find stability.



Pictured are some of our Australian family

During January, the **Global Infrastructure Group of companies** got together to raise funds for the bushfires in Australia, by having cake sales from each of their offices. Having totalled up the donations, we are proud to announce that the final total raised was an amazing **\$4001**. All Donations will go to the New South Wales Rural Fire Service. These are the amazing volunteers who have been on hand to offer immediate practical assistance and emotional support to people fleeing their homes from the devastating bushfires.

**Thank You So Much
To All Who Donated**



globalnews@grcl.co.uk

SHARE YOUR NEWS

Tell us what's happening or send us your pictures or videos.

CHARITY EVENTS



This year Jim Cuell (GRCL Commercial Director) has decided to take on a couple of personal challenges. The first of which is a return to the London Landmarks Half Marathon taking place in Central London on Sunday **29th March 2019**. This year Jim will be completing the challenge with his wife, Ali. Having recently lost a dear friend to cancer Jim and Ali are both training hard and are fully committed to completing the challenge.

They have been fortunate enough to be accepted onto the **Macmillan Cancer Support** team and will be running and raising money on their behalf.

Macmillan Cancer Support is there to help everyone with cancer live life as fully as they can, providing physical, financial and emotional support.

We know that there are lots of worthy causes but if you are able to spare some time to donate to this incredible charity it would be very much appreciated.

You can donate by following the link below.

<https://www.justgiving.com/jimcuell>



Neale Palmer (GRCL Electrical Supervisor) shall be undertaking the London Marathon on the **26th April 2020**.

"Cancer is happening right now, which is why I'm raising money for Cancer Research UK. There's no time to lose! Donate to my page today and help bring forward the day when all cancers are cured"

THANK YOU FOR YOUR KIND DONATIONS

<https://fundraise.cancerresearchuk.org/page/neales-london-marathon>



Save the Children
CHRISTMAS JUMPER DAY



Christmas Jumper Day

is an annual fundraising campaign in the UK and Ireland organised by charity Save the Children in the UK. On a specific Friday in December, people are encouraged to *make the world better with a sweater* and raise funds for Save the Children by wearing a Christmas jumper and making a minimum donation of £1 (€1).

Those taking part can wear a Christmas jumper they already own, decorate an existing jumper with festive decorations, or even knit their own. Christmas Jumper Day is popular with schools and workplaces. Groups may take part in additional fundraising activities on the day, as well as making donations.

Save the Children launched their first Christmas Jumper Day in 2012 on Friday, 14 December.

THANK YOU TO ALL WHO DONATED TO THIS WORTHY CAUSE



Global
Infrastructure
Group

A Leading Provider Of Turnkey Solutions
For The Rail Industry



Railway
Construction



Civil
Engineering



Telecomms



Multi-Utilities



Power
Networks



General
Construction



Design and
Consultancy

Combining technical and innovative excellence with a
real passion for detail and safe delivery of projects

www.theglobalinfrastructuregroup.com