



Global  
Infrastructure  
Group

Issue 23 2020

# GLOBAL NEWS



**In This Edition.....**

- \* Project News**
- \* Covid-19**
- \* Celebrations...**
- \* A Day In The Life...**



[globalnews@grcl.co.uk](mailto:globalnews@grcl.co.uk)

## Foreword

**Welcome** to another edition of Global News Magazine. An edition which is being published during a time of tremendous challenge and difficulty the like of which we have not experienced previously. The restrictions that we are facing are having a dramatic impact upon both our working environment and our interactions with relationships, families and friends.

It also impacts our entire Global business, from Australia to the U.K and Ireland.

Through extreme adversity however also comes opportunity and the situation we are currently facing has meant that we have had to re-evaluate the manner in which we work and operate.

The extent that we are working remotely from our offices and work sites, coordinating meetings with colleagues and clients, limiting our travel and personal contact would have been unimaginable only a few short months ago. This will change the way we think and act going forward and will hopefully encourage us all to identify more ways that we can work smarter and more efficiently.

The manner to which our staff are responding to the challenges we currently face has been inspirational; the spirit and determination to continue as best we can, coupled with a collective desire to look out for one another. The updates from all sectors of our business which are contained within this edition of Global news are testament to this achievement.

Of course, across all sectors of the GIG we continue to rely upon our USP, our core asset, which is our people, in order to continue to deliver to the same quality and consistency as we have always strived for; despite the circumstances and restrictions that we are currently enduring.

It is important that we all remain vigilant and do not become complacent to the continuing threat that we face and continue to support each other, particularly with regards to mental health.

We are all acutely aware of the risk to general health, but we need to be vigilant to the mental impact upon our colleagues.

We will emerge stronger from this pandemic and we will change the manner that we conduct our business in the future. However, there will also be many of our colleagues who have been personally affected by COVID 19, through the health of personal family or friends.

I look forward to future editions of Global news, when we are again focused on positive news stories. In the meantime, thank you all for your ongoing commitment and the fantastic manner in which you are all responding to the current environment.

Please stay safe, support each other and most importantly ask for any support required.



**Sean Donaghey**  
**Operations Director**  
**Global Rail Construction**

**Passionate**

Committed in heart and mind to whole-heartedly embrace our core values and culture, without exception.

**People**

Growing our organisation from within, promoting and empowering our people, inspiring them to be the best they can be.

**Professional**

At all times we act with integrity, providing quality service, reliably and responsibly.

**Teamwork**

Working collaboratively whilst supporting and respecting each other's views.

**Responsible**

To consistently deliver quality, on time, safely and to budget whilst protecting our communities and the environment.



## Mission & Vision

**Using the best mix of technology and tradition,  
The Global Infrastructure Group empowers its workforce to deliver to  
our clients the best possible standards of workmanship within the rail  
industry at a competitive price.**

## Global Rail Construction Completes Civils Project at Three Bridges

**Global Rail Construction** has successfully completed its civils contract at Three Bridges.

The work scope included:

- Core drilling and installation of a platform duct route
- Installation of GRP Fencing and a staging unit
- Supply and installation of Critical Rail Temperature (CRT) track monitoring and wing wall monitoring of bridge
- Supply and installation of 4no x 10m 406mm piles
- Supply and installation of a Cantilever signal structure
- Supply and installation of a new Right Away (RA) signal base, ducting and structure
- Installation of a Subsidiary Signal on a post
- Removal of an existing Cantilever signalling structure



The contract is part of the new 8 and 12 car Class 700 programme for Train Operator GTR, being enhanced by Network Rail and is to support the requirement for providing the necessary signal sighting at Three Bridges, East Croydon, Brighton and Redhill railway stations.

During the works the team received praise from Steve Holmes, SPM for Network Rail, Southern Capital Delivery:

***“Please accept and pass on my personal thanks for the work carried out over the weekend. I don’t need to dwell on the appalling weather conditions which we all experienced, which only served to make the efforts of everyone even more impressive. We don’t often get to see the guys actually doing the works as they disappear as soon as they’re done, (and who wouldn’t want to get out of that ....) , but please be sure and pass on my thanks and gratitude for their resilience and resolve to get the job not only done, but done safely. We exceeded what we expected to get done considering the storm, which puts us in a great position to complete the commissioning in Week 48.”***

On completion Steve also added:

***“I just wanted to say a huge personal thanks for the hard work, trust and collaboration you have shown in bringing the project to a very successful conclusion following last night’s commissioning of Three Bridges T280 signal. I’m sure you all remember the big decision taken to move away from developing T281 and instead focussing our efforts on another option with T280, and all the stress and work that that imported, but we did it – together! There have been many stakeholders to pacify along the way, and we have always delivered one message, regardless of who any of us spoke to. That is a very powerful thing to have developed and has meant that there is a confidence in the team we have built that we work as one to deliver...”***





## Welling Rail Project Reaches Milestone

**Global Rail Construction** has successfully concluded its nine-day railway blockade and in doing so completed the supply and installation of a 200m long steel sheet piled cess wall, to stabilise the railway embankment at New Road, Welling.

The team received high praise from BAM Nuttall Operations Manager, Gareth White for the works to date:

***"I wanted to send a personal email to you and your team for the works carried out last week at Barnhurst. This scheme had short timeframe from planning but from our point of view delivery was well organised and the teams professional on site. Both BAM and our Client see this scheme as a success so many thanks to you and your team."***

Global Rail Construction Limited's civil and structural engineering capabilities take full project responsibility and offer a fully managed and integrated service for clients within the railway infrastructure. We can provide civil and structural engineering solutions from initial project planning and design, to enabling works covering site surveys, hazard and environmental assessments, procurement, onsite construction and equipment installation, through to final commissioning.





## Thameslink Survey & Investigation Package Awarded to Global Rail Construction Limited

As part of the Thameslink Programme, the railway systems for London Bridge was completely remodelled to suit a new layout at London Bridge station and provide substantial capacity improvements to enable proposed current and future operational timetabling, this is referred to as the N421 Project.

The complexity of managing, staging and delivering the railway systems in order to meet the remodelling programme, has necessitated a requirement for the railway systems infrastructure to be surveyed, in order to confirm its suitability and whether further upgrades and rectifications will be required.

To support these works, **Global Rail Construction Limited** (GRCL) has been awarded a lineside survey contract by long-term customer BAM Nuttall, to undertake the necessary investigation and reporting of 44 No Signal Gantries and their associated containment, which includes but is not limited to the following scope:

1. Structural condition surveys in relation to original Form A requirement for painting
2. The condition and positioning of cables on the structures including
  - a. The position of cables relative to associated tray work/containment (particularly noting areas where cables have no associated containment)
  - a. The type of signal cable (B or C)
  - b. An assessment of cable slack (or tension)
  - c. Any visible damage to cables
  - d. Any serrated edges on tray work/containment that could potentially cause damage to cables
  - a. Any structure concerns
  - b. Tagging and tracing of cables to ensure end to end point identification
  - c. Condition and suitability of the use of cable management to secure cables to containment in contrast to the existing Civils As-Built design

On completion of each survey GRCL will review and discuss the photos and observations with the BAM team at a weekly Technical Interface Meeting and determine one of the following:

1. An agreed scope of residual works (with no further survey requirements) or,
2. The requirement for further detailed 'tag and trace' surveys

GRCL will produce final survey reports, documenting the findings, associated agreements and will include any recommended remedial works to be undertaken, whereby GRCL can be instructed to complete the remedial scope.

Project Manager Barry Smith, is leading Global Rail Construction Limited's in-house team of self-delivery experts, who will be covering all disciplines including Civil & Structural Engineering, Signalling and E&P. Surveys are already underway and there are a number of Signal Gantries already completed, some remedial works instructed and on-going, with further awaiting instruction shortly. MD Marco Lombardelli added this:

***"Delighted to be awarded this multi-disciplinary package of works from our esteemed client BAM. The full suite of internal expertise will be managed and delivered by our in-house staff, something that we are immensely proud of."***



## Clacton Re-signalling Railway Civils Award

**Global Rail Construction Limited** (GRCL), has been awarded a railway civil engineering design and build programme of works on behalf of Atkins Global.

Clacton Re-signalling's principal driver is the asset condition of the interlocking and associated track infrastructure at the throat of Clacton-On-Sea station. Much of the signalling in the area dates back to 1958 and utilises a lever frame dating from 1891. There is currently a mixture of semaphore and colour-light signals, controlled by a mechanical/electro-mechanical lever frame. There is also a mechanical ground frame at Clacton Station. The existing signalling equipment has been the subject of life extension works in 1996 and 2004.

Many components are obsolete and only available on a repair and return basis. Most of the existing location cases have considerable corrosion. The signalling uses some single-cut circuits which are the subject of ORR concern. Searchlight signals are installed on this line, with known Wrong Side Failure (WSF) modes. P-Style relays in the lower portion of the box have been recognised as susceptible to sliver migration. So these works, will look to minimise maintenance and reduce whole life costs.

GRCL's civil engineering contract covers the provision of a full site-setup, all necessary management and supervision, materials, plant and delivery to the point of construction. The scope consists of the following elements:

- Vegetation clearance
- Design and Build of 1 No Location Staging Platform
- Design and Build of 11 No Signal Foundations (mixture of concrete and piled solutions)
- The installation of other ancillary railway civils including location hardstanding's, RRAP's, cable routes and a Relocatable Equipment Building foundation base and associated works (Design by Atkins)
- Site Clearance and Waste Recovery throughout construction and upon completion

Managing Director, Marco Lombardelli added:

***"This is a fantastic award for the UK team. Utilising our railway design and construction capabilities in civil and structural engineering, we look forward to the successful completion of these important works, in order to upgrade the signalling systems in the Clacton-on-Sea area.***

***This is another collaboration with our partner Atkins Global, and we look forward to many more."***



**Global Rail Construction Ltd**  
is a Principal Contractor and a leading UK provider of  
design and build services to clients in the rail and  
transportation sector



## WORKING A DAY IN THE LIFE OF COVID-19.....

Coronavirus disease (COVID-19) is an infectious disease caused by a newly discovered coronavirus.

At the time of writing, there are no specific vaccines or treatments for COVID-19. However, there are many ongoing clinical trials evaluating potential treatments.

The sudden outbreak of Coronavirus disease (COVID-19) has changed everyone's way of life.

Many of us are working from home, however, there are also many who are still continuing the best they can on the front line.

Global Rail Constructions SMTH/SWL, Brian Richards, shares his experience working a day in the life of COVID 19.

***"The alarm goes off at 04.45 and I get ready for the day ahead. For lunch, I would normally buy something during the day, however, as these are 'strange' times I prepare a packed lunch to take with me. The roads are eerily quiet, just passing a few cars. Note you need to keep an eye on your speed as the roads are so quiet its easy to forget your speed limit.***

***I arrive at site and accept the RT909 online and fill it in ready for the days work.***

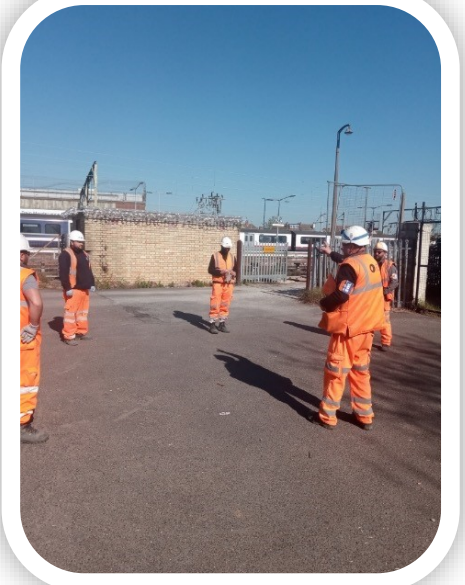
***I receive a daily brief from our Supervisors on site and collect the paperwork, task brief, permit to dig, POWRA.***

***The team load the tools ensuring they keep the social distancing of 2 metres minimum apart. I prepare paperwork whilst they load up. Once the tools are loaded, I check to ensure that they are serviceable and that the service date for the whacker plate is in date, the Cat and Genny are in calibration and have a full battery. We then travel to site. The tools are unloaded at the gate and the flatbed and vans are then moved to the car park ensuring an NCP parking permit is obtained.***

***We walk back to where we are to access, When at the gate I scan the sentinel cards and brief the team on the safe system of work, complete paperwork etc. I then give a task brief on the days work.***

***Prior to going to site we take time to discuss the days work also discuss social distancing and when a mask would be required to be utilised. I ask the team if they are all feeling well and does anyone have a temperature, cough, sore throat. I also tell them that if at any time they are feeling unwell they are to notify me.***

***If their phone rings, I advise them to step back into a position of safety before answering.***







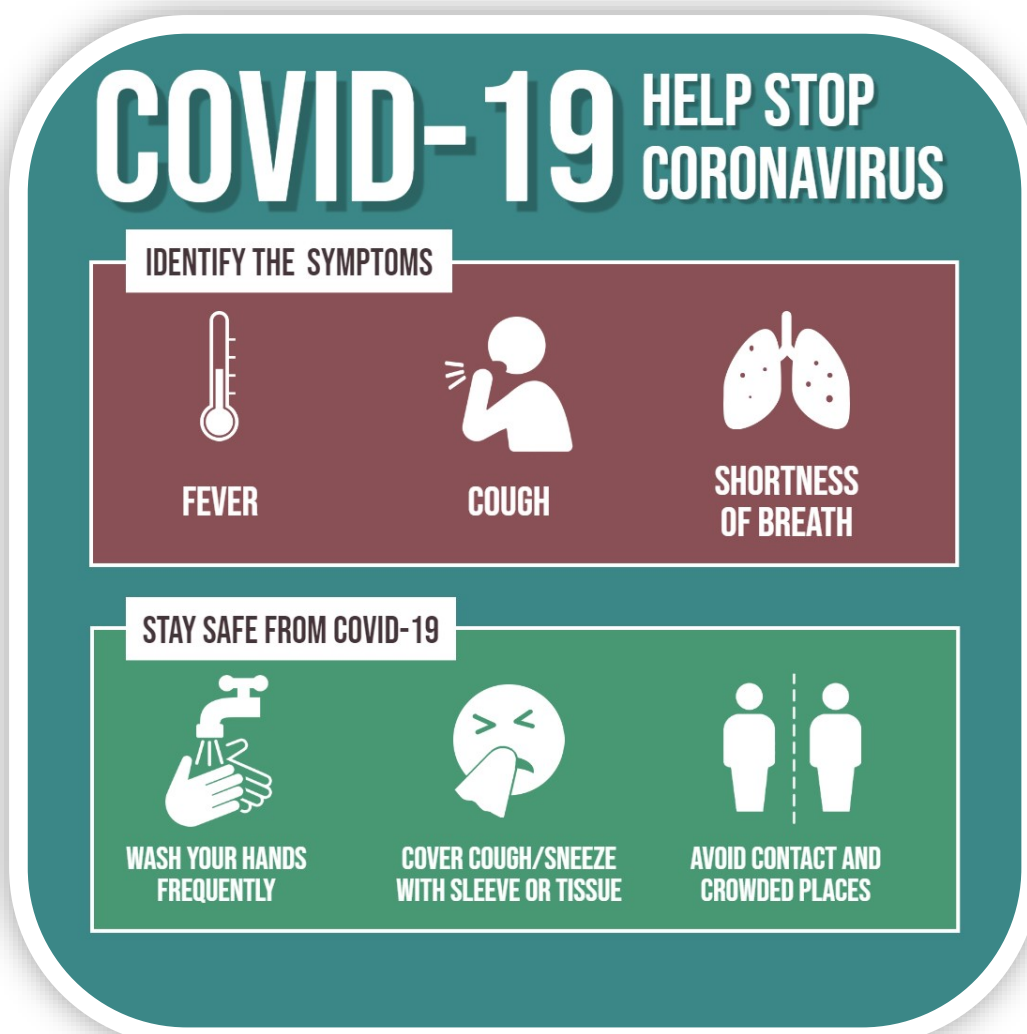
*When on site, I set up the safe system of work, it is a separated system and I use my Site Warden to assist me. I advise my Site Warden that if at anytime they need a break they are to inform me. The team is once again briefed on the safe system of work and the barrier they are not to cross. When all is in order and safe, we then commence our days work.*

*I do find it difficult working the two metres apart, when you have been working with these people for years, but it is managed, even though the tasks take longer than normal.*

*We stop for a short lunch break and give the team time to wash their hands prior to having something to eat and drink. We do not eat at the yard as there is limited space in the welfare cabins and so eat in the vans. Prior to commencing works again, we have a team briefing due to the social distancing requirements once again.*

*When it's time to stop work and go home, the tools are loaded into the vehicles and we travel back to the site compound. Hands are washed and sanitised, we have a debrief and discuss the days work.*

*All that's left for me to say now is **Stay Safe** and will see you all when we are able to put all this behind us."*





Global  
Rail  
Construction

# Managing Health & Safety in COVID-19 Pandemic

**Health and safety** in construction is very important because the industry is prone to hazardous situations and this can be dangerous at times. It is therefore important that we always make sure that all aspects of health and safety have been considered when planning to undertake works on the construction site.

The current COVID-19 pandemic and the need for appropriate risk management coupled with Business Continuity Planning (BCP) across all operations in GRCL continues to support the robustness of our systems and efficiencies in delivery.

The Health and Safety at Work Act 1974 mandates us to protect the health, safety and welfare of all employees. Similarly, we aim to reduce the impact of our operations on the environment. The management commitment to HSE is expressed in our HSE Policies and our Management Systems protecting the corporate decisions that we take daily at the business.

Continually, we have assessed project risks, including COVID-19 work environment and implemented changes to help staff work more comfortably and effectively throughout this period. While at the design phase, we have identified and mitigated risks to acceptable levels, the same processes have been implemented at construction phase. As more than ever, the HSQE team is monitoring our performance towards individual project HSQE targets and that of the overall business.

So far, all departments including, the Senior Management Team (SLT), Project Delivery Team, HSQE, Design, Planning, Procurement, Human Resources, Commercial and Planning to mention but a few must work together not only to focus on the works ahead of us but also our personnel who are the greatest assets of the business. So far, this approach has been given the greatest impetus by everyone within the business with the strong leadership of the Senior Management Team.

With lockdown in place and physical interaction between people limited, our HSQE department continue to lead on the health and safety front and provide the relevant advice and guidance to site teams in order to ensure risk planning is maintained. Below, the HSQE department outline two key areas to support safe delivery. These include;

## **Project top risks;**

Project to continue to identify their risks of their projects and provide controls to mitigate them during the life cycle of projects from its inception. This also calls for the risks to be communicated to everyone working on behalf of the project including our subcontractors.

## **Operatives looking after themselves;**

Initial guidance from SLT required that personnel with underlying conditions are made their responsible managers aware in order that they would be looked after. Moreover, it is still the responsibility of each individual to take active steps to keep themselves safe, such as by working remotely or avoiding using public transport as outlined within the government guidelines. The section of HSWA 1974 states that we all have responsibilities to ourselves and others by our actions and omissions. These responsibilities include having the right attitudes towards oneself; healthy eating and mental health. Finding the balance between what we read, listen to and watch is very important in times like this because of the potential consequences.

## **Keeping our worksite safe;**

- There are many things you can do that will help to make your workplace safer and healthier;
- Make sure you keep working environment clean and tidy at all times – this includes where we are working from home;
- Ensure that all frequently touched areas are cleaned often and thoroughly, particularly desk surfaces, door handles, etc.; - use the government / NHS guidelines including washing of hands;
- Maintain 2 meters social distance at all times;
- Report damaged equipment, plant and tools;
- Always follow your organisation's waste-disposal stream policies, particularly with personal used disposables;
- Report all accident, incident and close calls using the channels provided to the project.

***Please do not hesitate to engage the HSQE team if you require their support;  
- remember we can overcome COVID-19 if we work together as a team.***



## GRCL awarded CP6 Design Framework

We are pleased to announce that **Global Rail Construction Limited (GRCL)**, has been successful with its tender for the Designer Tier 2 Framework Agreement with BAM. The design team provided a compelling offer, evidencing the following:

- How safe design and specifying has been previously achieved on its projects;
- The organisation's in-house design and railway engineering capacity;
- How engineering assurance has been applied to previous projects;
- How digital approaches are integrated into its work;



GRCL also provided some initiatives in relation to provisions for diversity and inclusion across the business and some working examples of how inclusivity has made a difference. The contract will extend throughout Network Rail's Control Period 6 (CP6), covering BAM's Southern Multi-Disciplinary (SMD) Framework and GRCL will be providing Design services on a call off basis for a five-year period.

Delighted GRCL Design Manager, Richard Horsted added:

***"This is great news and testament to the efforts of the entire team. We have made impressive strides with our design and consultancy development recently, and this latest success is reward for the fruits of our labour."***

Our design and consultancy division constantly adapt to new technology and innovation. State-of-the-art 3D CAD systems are used to assist with analysis and design, providing significant advantages for clients by lowering project costs and reducing programmes timescales.

Our in-house activities include:

- Civil engineering and structural design
- Mechanical, electrical and power design
- Telecoms design
- CAD drafting and design including 3D modelling
- Independent design reviews

**Global Rail Construction** has proven experience in delivering some of the most exciting projects across a diverse range of service sectors. Our in-house capabilities, our scale and our supply chain partnerships have allowed Global Rail Construction to deliver complex multi-disciplinary projects that make a positive difference to our clients, across the UK infrastructure industry that we serve.

**Global Rail Construction**  
Units 18 & 20  
The io Centre  
Hearle Way, Hatfield  
Hertfordshire, AL10 9EW  
**+44 (0) 870 990 4074**





## Global Rail Australia's Track Division Completes 2000m Track Renovation Project for V/Line

**Global Rail Australia** has successfully completed a significant track project for customer V/Line by removing mud spots on the Craigieburn – Kilmore East regional line. The works were in a remote area and were completed in a live operational environment, under the full supervision of the Global Rail Australia Track Engineering team.



The comprehensive scope of works to the Up Line included the following track deliverables:

- unclipping existing sleepers
- timber sleeper replacements
- mud spots removals
- laying of new ballast
- installation of new LPC sleepers
- formation of the access track

In support of the scope, Global Rail Australia's team created a detailed staging program and procurement plan, which were instrumental in supporting project delivery, which were also fully coordinated with activities from V/Line.

Alternative methodologies were also created by Global Rail Australia to minimize the disruption to live operations, allowing potential for delays to be eradicated by mobilizing additional crews to finish the tasks.

Works were undertaken without any incidents, accidents or technical issues and having commenced in March 2020 were successfully completed in 12 days – meeting the occupation requirements of V/Line.

Richard Needham, Global Rail Australia's Track Division Manager added:

***"This successful, fast-track project included a very well-planned program of track construction activities, which were expertly delivered, and is testament to the resilience and capabilities of the Track Construction team."***







## Global Rail Australia – Yarra Trams Re Rail – Queensway St Kilda

**Global Rail Australia** - Track division complete their first project with Yarra Trams in April.

Yarra Trams is undertaking a project for removal of worn rail on curves on its ballasted track. It has been successfully accomplished within the occupation provided by Yarra Trams with no safety and technical issues.



Global Rail completed the re rail on the Up Track and Down track curves. Which included the following:

- Unclipping Rail
- Replacing worn rail with new 41Kg rail
- Welding and restressing
- Weld testing

All works were completed in a live operational environment under supervision. The works took place over a weekend in April 2020



Our vision is that everyone arrives for work healthy and leaves for home safely, everyday.

**Global Rail Australia**  
5 Plane Tree Avenue  
Dingley Village  
Vic 3172  
Australia  
+61 (0) 3 9551 0465

**Global Rail Australia** has proven experience in delivery of the most exacting projects across a diverse range of service sectors. Our in-house capabilities, our scale and our supply chain partnerships have allowed Global Rail Australia to deliver complex multi-disciplinary projects that make a positive difference to our clients, across the Australian infrastructure industry that we serve.



**Avetta**



## Project Updates

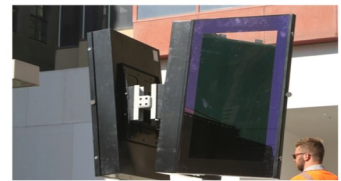
### Global Rail Australia - MTM Project

Global Rail Australia recently expanded its OCS capability with the installation of new Public Information Displays (PID's) on behalf of Metro Trains Melbourne (MTM).

The new PID's were installed at Flagstaff and Parliament Stations, which are two busy stations on MTM's underground system.

The works included the fabrication, supply and installation of the structural steel supports, installation of power and communications supply, testing and commissioning of the new PID installations.

MTM plan to roll out the installation of additional PID's at other stations on the network.



**Global Rail Australia** continued the on-going works for Zinfra on 342 Buckley St – Essendon. Slab and Footing footings were poured for New transformer 2, as part of the second phase of the project.

As part of this we completed all conduit runs from CSR trenches and switchroom to the new transformer, SW runs from transformer enclosure to Humeceptor, shuttered and prepped HD bolts for new switchyard equipment.

11No pre cast panels will be installed using a 250T crane, bringing phase 2 of the project to a close.

### Global Rail Australia - Sandringham

GRA have just successfully handed over Station St Carpark, Sandringham to Metro Trains Melbourne.

The project consisted of 14No new car parking bays an associated civil works constructed adjacent to an existing substation, including:

- Clear and Fill
- Placing of Subgrades
- Kerbing
- Drainage works
- Asphaltting
- Line Marking
- Concrete Pit installs
- Conduit runs
- Modification of existing fencing

New pits were installed on adjacent street and new conduit runs ran back to an existing Substation. The project was completed in time and is now open to the public.



## Project Updates



**Global Rail Australia** resourced skilled specialised rail personnel to help facilitate the Avon bridge upgrade. Working with UGL and CPB, Global Rail supervisors managed track renewal works, welded track, surveyed the site/viaduct along with general maintenance labouring. The scope of the work included removing 200 m of track of each end of the bridge building new track formation to allow for the track slew. These works were carried out over a 6 day occupation and completed on time.

### Global Rail Australia – Tasmania Cement Shutdown

Global Rail carried out essential track works during the Cement Australia shutdown on the Western Line.

We only had a 6 hr window per day for 12 days to complete these works. The scope was to rerail 1.2 km and complete mudhole works over 500m of track.

With no access for 2 km we developed a methodology that we felt would get this job done in the time frame. Global rail utilised plant from interstate which compromised of a 20 tonne ballast bin towed by a hirail excavator to get the ballast to site.

We delivered all the track works on time and all welds passed NDT with 100 % pass rate.



Global  
Infrastructure  
Group

THANK YOU  
**2.5k**  
FOLLOWERS



# A DAY IN THE LIFE OF .....



In this issue, we meet Mr Andrew McEvoy, Project Manager for Global Rail Australia.

We find out a bit more about him.....

**Current job title?**

Project Manager - Civil

**What project are you currently working on?**

ARTC Culvert repairs (Newport to Serviceton line), V/Line culvert replacement in Geelong, Development Victoria Flinders Street Undercroft and various tender proposals.

**What is your most favourite thing about the job?**

You are always learning. Even though some project work may appear similar on the surface, every project is different (different client, location, weather, systems, equipment, materials etc.)

**What advice would you give to anyone considering this profession?**

Grow very thick skin and have a sense of humour. More seriously, good communication is critical to project success. Knowledge comes with experience but maintaining good communication is something anyone can and should do.

**What do you feel most proud of?**

My family

**If you could travel anywhere, where would you go and why?**

Having spent a good part of my career travelling overseas for work, I generally prefer to stay close to home on holidays. If I am going to travel, I like going to places that are off the beaten track. Both South America and Eastern Europe would be pretty high on my list (mainly because I have never been there).

**How do you spend your free time?**

Running or getting out of the city to hike/camp and generally hang out. I also enjoy gardening and attempting to surf but I'm a cold-water snob.

**What is your greatest strength or weakness?**

Strength – I have no weaknesses

Weakness – I tend to lie about my strengths

**Hobbies or special interests?**

Running, camping/hiking, movies and live music

**What is your favourite sport?**

My favourite sports to watch are AFL and ice hockey but I love distance running because it is the purest sport (no special equipment and tough both physically and mentally).





# Congratulations

**Global Rail Construction** are pleased to announce that Senior Planning Manager Muhammad Majid, has successfully been elected as a Member of the Institution of Mechanical Engineers.

Institution of  
**MECHANICAL  
ENGINEERS**

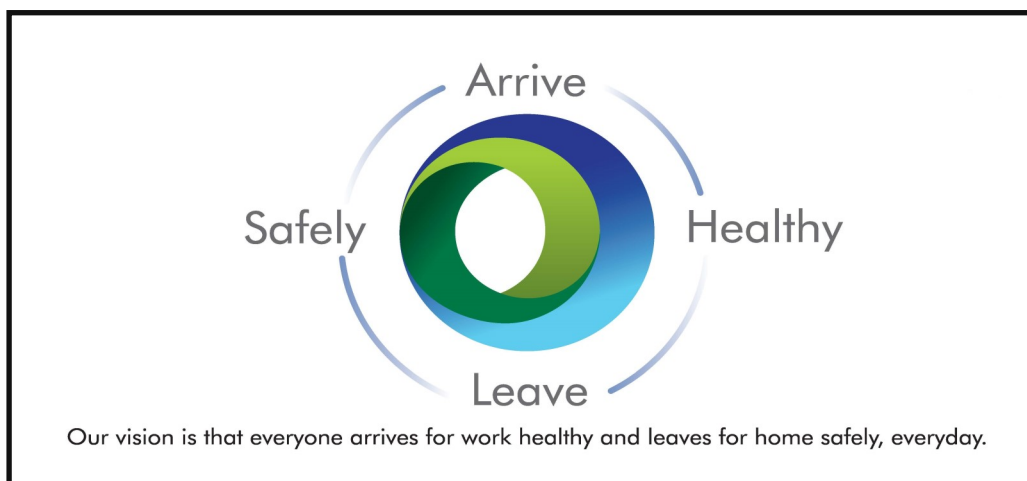
Majid joins an elite group of professionals, who as a Member with his knowledge, experience and commitment to engineering, are changing our world.

We asked Majid how he feels now that he has achieved this latest goal: ***"Thanks to God Almighty for the reward in the form of CEng status, all the hard work in relation to this application had been paid off finally. I started working on my final application process in Sep-19, with a final application submission in the first week of Dec-19. My interview was held at Perkins Engines based in Cambridge towards end of Feb-20. The email to acknowledge the successful application was received last week and was a moment of tremendous joy. Thanks to God again for this achievement and I hope that this will help me towards further career development and skills improvement."***

At Global Rail Construction, we encourage and support the development of all our staff members. So, we are delighted that Majid has become another professionally recognised member of our growing team.

The Global Infrastructure Group's has a vision to be the leading infrastructure company in the sectors we operate, benefiting the communities we serve, the people we employ, and our investors. Our success in realising that vision is directly connected to the quality, talent and energy of our team.

***Congratulations Majid on a fantastic achievement.***





## Project Updates

### Ericsson (Optus) 5G Upgrade of Spotswood Communications Tower

**GRA Networks Australia** has successfully completed the upgrade of an existing communication tower to support new 5G technology on behalf of its client Ericsson (Optus). Optus are an Australian leader in telecommunications; delivering cutting-edge communications and entertainment services and are investing in their networks.



GRA Networks scope of works covers the upgrade of the headframe to accommodate extra equipment inclusive of new fiber trunk cable and also an internal power upgrade. Specific project deliverables included:

- Removal and installation of a new headframe
- New 3500 and L2100 RRUs
- Installation of a trunk cable, internal DC and patching equipment
- New Baseband units for 5G
- A new iDCDP for RRU power
- A power system unit upgrade
- Site integration and test calling

Works commenced in March 2020 and were undertaken with a full Optus site outage in place throughout the duration of the build, to omit RF exposure.

Despite some challenging prevailing site and weather conditions, GRA Networks completed works as per Ericsson's requirements, with no reports or incidents raised by the public or client.

**WOW...2500 Followers!**

**Thank you** for following us from around the globe.  
We will continue to provide updates that are  
interesting & engaging as we look towards  
our next milestone.



## Project Updates

### GRA Networks – Huawei – Optus, Mobile Network Australia

Optus is currently undertaking to install a new mobile phone base station in Carlton, VIC in order to provide a better coverage nearby areas of Carlton. This build was one of the more challenging ones with major OH&S issues surrounding the hotel, local restaurants, Space constrictions and public access around the hotel.

1st Phase was to repair a failing parapet wall on which the steel work was to be erected upon. Scaffolding to three sides of the Hotel was required to ensure safety zones could be established during the repair works. A conglomerate of trades was involved for the work scope including Scaffolders, Roof plumbers, Bricklayers, Core drillers and setout engineers. Co-ordination of all trades was key to the success of this phase of the build.

2nd Phase was to transport and install the steel work and pre built frames. All steelwork brackets had to be set out and drilled along the parapet wall ready for the landing of the steel frame sections. First the support beams were landed and secured into position then the 2 x frame sections were lifted and installed onto the wall. The remaining crossmembers and bracings were then installed completing the base section ready for the equipment installation.

3rd Phase includes the installation of the 5 bay OTC and all equipment on the site which will be completed by early May 20.



Avetta





GRA  
Networks  
Ireland

## Project Updates



AQUACOMMS

### GRA Networks wins contract with Aquacomms

Aquacomms is a carrier's carrier – which means they only supply fibre connectivity to large carriers. They build and operate subsea Networks and service the north Atlantic market.

Their fibre runs along the seabed from USA to Ireland – reaching land in County Mayo and returning to sea in North Dublin.

The POP site in Dublin will also service local metro networks. GRA Networks are working on a design and build project for Aquacomms to build its new POP facility in North Dublin creating the gateway between Ireland and the UK.

At this location GRA will be responsible for the design of the new facility and also the construction including all associated uphaul and backhaul fibre connection infrastructure and the provision of a new power connection.

Plinths will be designed and built to locate specialist cabins to host the state-of-the-art telecom equipment. We look forward to working on this project with our new client.



#### AQUACOMMS

**is building CeltixConnect-2, North Wales Connect & North Sea Connect to provide uniquely diverse, high capacity routes to the U.K. & Europe and ring protection between mainland Europe, the U.K., Ireland and onwards to the U.S.A.**





**GRA Networks Ireland** has been busy with Telecoms works for Operator, Three Ireland. The image below is taken from a drone, showing a recent site in North Donegal. Director of Telecoms.

Tom Staunton commented on this project, saying: ***"Normally we only work on rail sites for Three, however, I am delighted to say that we are providing them with crucial support in other areas during these challenging times, to help reduce network congestion."***

**GRA Networks Ireland**, is a full service telecommunications contractor, providing a comprehensive range of services from upgrading existing infrastructure, to building new mobile phone towers and other wireless network infrastructure.

The range of services on offer includes:

- 3G and 4G equipment installation and commissioning
- IBC and DAS systems installation and commissioning
- 'Green Field' builds
- Wi-Fi network installation and commissioning
- Transmission links installation and commissioning
- Earthing systems installation and testing
- Fibre and copper networks distribution and transmission networks
- Tower construction, retrofit, maintenance and inspection
- Condition surveying and reporting
- Emergency response
- Operation and maintenance services
- Consultancy services



## Project Updates

**GRA Networks Ireland** continue to serve the Irish Aviation Authority (IAA) on numerous rigging projects.

To date GRA have completed 5 separate important rigging jobs at Dublin Airport including one on the rooftop of the new landmark building that will soon house the new air traffic control room for the ever-expanding busy airport.

**GRA Networks Ireland** are continuing to survey sites around the country perimeter for the IAA in order to assist them as they plan to upgrade several of their important radar sites.

We have also recently assisted IAA radio engineers at Shannon airport with site design and development issues.

GRA have also been tasked with fault finding and repair on aviation equipment at their Malin Head radar site amongst others.

### ***New air traffic control tower rooftop rig at Dublin Airport***





## Project Updates

### Global Rail Services Limited Completes Fit Out & Renovation Project

**Global Rail Services Limited** are pleased to announce the successful renovation of Progressive Credit Union's (PCU) new facility on East Road, Dublin. PCU provides banking services to over 60,000 members in North Dublin locations and beyond.



The contract, which commenced in December 2019, covered the management and delivery of a fast-track program of high-quality refurbishments including Building, Mechanical & Electrical works. This called upon the depth of GRSL's organisation, with in house management and operatives across the full suite of fit-out trades working together in unison to successfully complete these works.

Site activities were meticulously planned and required careful co-ordination with several specialist Progressive Credit Union business services providers, including IT, secure comms and other security interface specialists, for items such as counters and security doors. GRSL worked closely with appointed Architect Rankin Associates and key stakeholders from PCU throughout.

During such a compressed program a number of challenges were both faced and solved by the team.

- Mechanical, Electrical and Fire Systems design was unapproved, which meant that GRSL worked collaboratively with the Rankin Associates team – whilst co-ordinating with the PCU business service providers – in order to deliver and produce the MEF drawings that were approved and utilised for the project.
- The ceiling void was extremely low, which meant that all services were very tight to the ceiling. The team procured and installed specific cassette ventilation and heating systems in a short timeframe to meet the space requirements.
- A leak was encountered during the build phase which came from the flats above. This slowed works down, however, our teams worked over several weekends to stay on track.
- Interior Design was concluded during the works program. This meant that the external signage could not be procured in time. GRSL instead installed suitable temporary signage for the branch opening and then returned to install the new signs afterwards.

#### Global Rail Services

Unit 516a Grants Rise  
Greenogue Business Park  
Rathcoole, Co Dublin  
D24 FH56  
Ireland  
**+353 (0) 1 458 8540**

**Global Rail Services** has proven experience in delivering some of the most exciting projects across a diverse range of service sectors. Our in-house capabilities, our scale and our supply chain partnerships have allowed Global Rail Services to deliver complex multi-disciplinary projects that make a positive difference to our clients, across the Irish infrastructure industry that we serve.



## Project Updates

With only a 12-week fixed timeframe, due to Progressive Credit Union having already sold their existing premises, Global Rail Services Limited, who were appointed as the Project Supervisor Construction Stage, used every spare minute to complete. The team commissioned on the Friday night before the opening, when the keys were handed over, providing a fully operational Progressive Credit Union facility, to the delight of all concerned.

Contracts Manager, Paul Connell was quick to praise the strength in depth of GRSL's impressive turnkey fit-out solution:

***"Our one-stop solution from acquisition through to project completion, provides a tailored service to each individual client's requirements. Having a fully managed service and dedicated in-house construction, mechanical and electrical teams, allows us to co-ordinate time pressured schemes and delight our clients even when challenges are faced."***

Global Rail Services Limited provide a turnkey building/construction solution for railway, private housing, commercial and industrial projects. Services also include general contracting and building work and can be offered as standalone disciplines in addition to the fully managed turnkey service and works can be contracted on a main contract, joint venture, sub-contract, or resource only basis.

Services offered include but are not limited to:

- Design
- Commercial & industrial construction
- Sub-station construction
- Railway station new build and refurbishment
- Telecom and signalling room construction
- Mechanical and electrical
- Project Management
- Resource supply

### Our Markets

Global Rail Services Ltd is part of the Global Infrastructure Group and is a leading Irish provider of design, construct and commission services for clients across a wide range of engineering and infrastructure sectors

Civil Engineering

Building

M&E

Permanent Way

Train Support



## Project Updates

### Global Rail Services—Rosslare Europort Berth 3 remedial works

This contract, on behalf of Irish Rail, is for the repair of the Berth 3 Linkspan lower deck transition ramp. The works are essential due to recent damage caused by a docking ship.

The estimated quantities for the works are as follows:

- Installation of temporary access platform that will be secured to the deck of the linkspan and submerged when it is in use.
- Remove the existing damaged section of the span deck and frame.
- Manufacture, fabricate installation 10t of steel, temporarily supported and fully site welded into position.
- Replace deck and fenders.

All works to the link span bridge were undertaken whilst maintaining access when ships dock to ensure ferries can continue to operate as normal.



### Global Rail Services—Boston Sidings Access Road of SSI Building

On behalf of Irish Rail, this contract was part of the Connolly Master plan after the sale of lands and has been on the critical path due to external influences.

The project involved the following works:

- Demolition and relocation of existing portable offices adjacent to the track
- Realignment of boundaries and access points
- New access road construction
- New utilities
- Ducting drainage lighting and power
- Generator relocation.



## Project Updates

### GSMR Civils Works, Package 2F (Dublin Area)

The final stage of package 2F at Bray Head Dublin is now complete on time and within budget. These 3no.sites were immensely hard to access line. All mast locations are situated between the rail line and the Irish Sea on cliff edges.

All plant delivered to site was under night possessions with works allowed during the week.

Iarnród Éireann (Irish Rail) Technical Executive, Paul Flynn, commented as follows: ***“All works have now been completed at Bray Head sites, a special word of thank you to Damien Carroll, Nicolía Gheargheas and the individuals on the ground who managed to deliver a good clean job despite the very wet and stormy weather on a very limited and awkward few sites.”***



### GSMR Civils Works, Package 2I (Various Sites)

The last and final site of package 2I XR 94 is now complete on time and within budget. This site required new access road, piling of 9 No. SFA 350mm piles and new mast base and associated compound works.

New access track and kee clamp fence installed for annual maintenance required by Irish rail telecoms department supported by GRA networks.

All works completed during the day under TSC protection and new 15m Monopole was installed using a rail mounted teleporter.

### ESB Trenching and Ducting Framework Cat 2

GRSL was commissioned by ESB networks to install new 160mm ducting for 500 metres along the main Dundalk to Newry road.



In this package was the construction of a new Ground mounted sub plinth and assisting ESB Networks with the cable pulling and jointing works was also included. Detailed traffic management plans and implementation on site was a big part of this work package. Works were completed on time and within budget and ESB networks have now commissioned the substation.







## ISO Success for UK, Ireland & Australia

Our Irish, UK & Australian businesses have successfully completed re-certification audits of their respective company Health, Safety and Quality Management systems.

**Global Rail Services Limited (Ireland), Global Rail Construction Limited (UK) & Global Rail Australia** successfully completed their challenging migration audits from OHSAS 18001 to the new Occupational Health and Safety Standard ISO 45001:2018.

**Global Rail Services** also successfully completed an audit of their ISO 9001:2015, which provides continuation of their ISO 9001 certification.

The Irish audit also covers the projects of **GRA Networks Ireland** – our Irish Telecoms Division.

**Global Rail Australia** also successfully completed audits of their ISO 9001:2015 and ISO 14001:2015, which provides continuation of their Quality and Environmental certification. The audits also covers the projects of GRA Networks – their Telecoms Division.

This means that over the past few months the entire Global Infrastructure Group of brands based in Australia, Ireland and the UK have all achieved ISO 45001:2018 – a brilliant result for everyone's hard work.

Co-Owner Marco Lombardelli added:

***"Thanks to everyone involved for your continued support of our countrywide management systems, and a special mention to those of you who were directly involved in the audits conducted at our sites and respective Hatfield, Dublin & Melbourne offices. Your efforts are appreciated – keep up the good work."***



Material & Plant Co-Ordinator) heard of this and decided to try and make a visor for Carmel's mum.

Joe told us how it all started; ***"I was watching a programme that had been given permission to access ICU's. What I noticed was that the face masks had a strap around the top of the key workers head - I knew we had face masks but no straps."***

***I then rang Adam Footer and asked him to remove the inner straps from our hard hats and try to fix this to the face mask. Adam drilled two small holes at the top of the face mask and fixed the hard hat straps to the face mask with two small cable ties and it seemed to work!***

***We made up five visors which we sent to Carmel to give to her mother of which she was most grateful"***.

During this pandemic we all want to do something to help the key workers. Carmel Juanillo's (GRCL Office Administrator) mum is a nurse at Northwick Park Hospital (Middlesex) and mentioned that her mum, and some other staff, did not have a visor as they had run out.

Joe Lomonaco (GRCL Procurement & Logistics Manager) and Adam Footer (GRCL





### Good practice social distancing in action



**From left to right**

- New extended troughing lid lifters maintain 2.3m distance.
- Site briefing with briefer in centre.
- Social distancing during surveys.

#### Standard variation

Following feedback on Standard NR/L3/MTC/CP009 - COVID-19 Contingency Plan: Safe Working Practices - a temporary variation has been approved with regards to the vehicle element of the Standard. For those who were unable to meet the compliance date you now have until 29 April 2020 to comply.

This Standard is a controlled document and should be obtained from your controlled publication distributor.

Contact us: [shield@networkrail.co.uk](mailto:shield@networkrail.co.uk) or go to [www.southernshield.co.uk](http://www.southernshield.co.uk)

Our **Global Rail Construction Ltd** team were featured in Network Rail Southern's "The Shield" publication.

It showed our teams using the new extended troughing lid lifters that were recently purchased, in order to maintain the 2m social distancing requirements and keep our people safe.

Southern Shield is a collaborative safety forum that consists of Network Rail Southern Region and its Principal Contractors.

Marco Lombardelli (Managing Director) was the winning bidder of a 3 foot Easter Egg donated by *La Famiglia Piccuito*. Marco donated the huge Easter Egg to a local charity, Herts Young Homeless (HYH) based in Hemel Hempstead.

HYH were very grateful and had this to say, ***"We'd like to say a huge thank you to Marco Lombardelli and Global Rail Construction Limited (Part of the Global Infrastructure Group) for their wonderful support. They kindly donated this giant Easter Egg for our young people, with the Hightown Care & Supported Housing Team in Hemel Hempstead, to enjoy this Easter."***



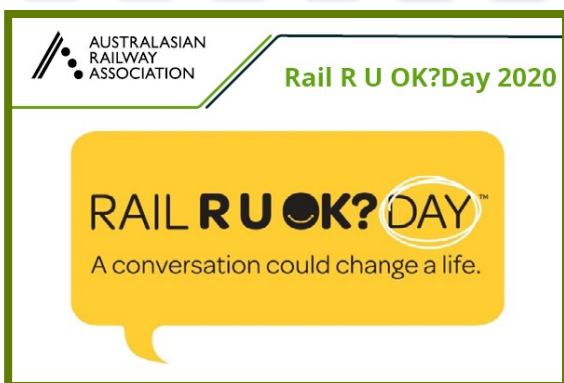
**Alessandro Lombardelli (GRCL QS) handing over the Easter Egg to HYH.**



## Global Rail Construction's (GRCL)

Head of Compliance, Peter Coleman, has prepared a briefing pack titled **"Working From Home"** as part of the company's contribution to the Health and Wellbeing of its people. The briefing will be issued through the company's Safety Hub Platform. GRCL employs Mental Health First Aiders as points of contact for its people to speak with if they, or someone they know, might be experiencing a mental health issue or emotional distress.

They are not therapists or psychiatrists, but they are on hand to give initial support and signpost the appropriate help as required.



This annual industry-wide event inspires rail staff across Australia and New Zealand to look out for one another during life's (including worklife's) ups and downs by asking **"Are you OK?"** and really listening to the answer. We all go through life's challenges.

This event reaches over 50,000 rail employees each year.

On April 30th, we celebrated this year's National **RU OK Day** for Rail Australia and there has never been a more significant or important time to ask each other, **"R U OK?"**

In these times of anxiety and somewhat disconnection remember you are not alone.

In the words of the CEO from TasRail, **"We all have loved ones we wish to protect, concern for the vulnerable and elderly friends, worries about our own health, financial circumstances or even job security."**

**Simply changes in habits, changes in routines and not being able to do the things we are normally used to doing, are all enough to give even the most resilient of us cause for concern.**

**There is no shame in reaching out, expressing your feelings and keeping the conversation going.**

**Speaking out may help you feel better – talk to a colleague – remind yourself of what is important in life".**

If we stick together, check in on each other, stay connected, support each other as a team, we can do this and we will be stronger, we are all in this together and here for the long haul – take care, stay safe and stay well.

globalnews@grcl.co.uk



### SHARE YOUR NEWS

Tell us what's happening or send us your pictures or videos.



Stephen Carey (GRA Networks Ireland - Programme Delivery Manager) proposed to his girlfriend Janet in March and the happy couple are due to marry in Spring 2022.

**Congratulations & Best Wishes To You Both  
From The Global Family**



Many congratulations to Peter Coleman  
GRCL (Head of Compliance) and his wife Sue who  
celebrated their silver wedding anniversary on the 05th May.

**Congratulations & Best Wishes To You Both  
From The Global Family**



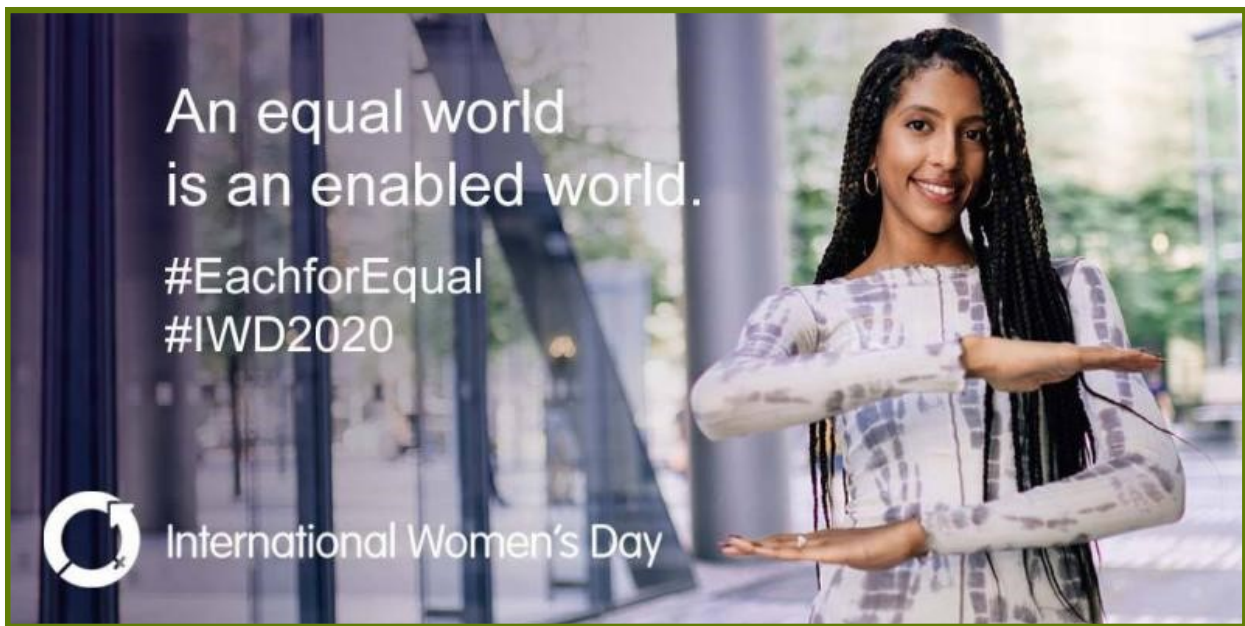
**CONGRATULATIONS**  
**to Richard Horsted (GRCL Senior Design Manager)**  
**on 10 Years Service**

Marco Lombardelli (Managing Director) shared his congratulations to Richard, ***“Just a quick e-mail to congratulate you on reaching this fantastic milestone. You are a credit to the business and you should be proud of the personal and career development you have made with your time at GRCL. Hopefully it will not be too long before I can shake your hand, touch elbows or kick ankles (subject to latest government guidelines) in proper congratulations. Well done again and here is to the next 10 years!”***

Richard had this to say about his time with GRCL, ***“Thank you Marco. There are no words that can thank you enough for all the training and opportunities you have given me over the last ten years -I don’t think many other companies would’ve spent so much time on a Cad Draughtsman who was out of work. I hope that I can repay the faith you’ve shown in me over the next 10 years.”***



## International Women's Day 2020 Campaign Theme Is #EachforEqual



**International Women's Day** (March 8 2020) is a global day celebrating the social, economic, cultural and political achievements of women. The day also marks a call to action for accelerating women's equality.

International Women's Day (IWD) has occurred for well over a century, with the first IWD gathering in 1911 supported by over a million people.

Today, IWD belongs to all groups collectively everywhere. IWD is not country, group or organization specific.

At Global Infrastructure Group, the celebration isn't just limited to Sunday 8 March. The whole of March is Women's History Month, when we honour women and all they have accomplished, whilst also raising awareness of the work still needed to be done to reach gender equality.

An equal world is an enabled world. Individually, we're all responsible for our own thoughts and actions - all day, every day.

We can actively choose to challenge stereotypes, fight bias, broaden perceptions, improve situations and celebrate women's achievements.

Collectively, each one of us can help create a gender equal world.

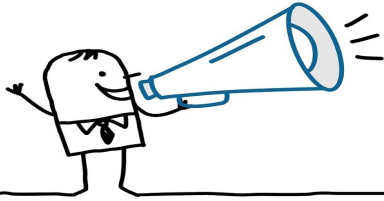
Let's all be  
**#EachforEqual.**



### SHARE YOUR NEWS

Tell us what's happening or send us your pictures or videos.

[globalnews@grcl.co.uk](mailto:globalnews@grcl.co.uk)



# REMINDER TO.....

## GLOBAL RAIL SERVICES DRIVERS

Just a reminder to all those at **Global Rail Services** who drive company vehicles.....

Please remember to carry out the **daily** checks prior to use.

Last month all those on the driver list will have received a reminder that included their Velocity App access code.

Checks are very important for the safe operation and maintenance scheduling of your vehicle.



**The RSA (Road Safety Authority) guidance states the following:**

- Vehicle or trailer owner, by law must maintain any vehicles used on a public road so that they are unlikely to cause danger to anyone.
- You must always make sure that all your vehicles are roadworthy and safe.
- As a driver, by law, you must make sure that any vehicle you drive on a public road is maintained and used so that it is unlikely to cause a danger to anyone.

### **Daily checks:**

If you briefly check specific items on your vehicle every day it will help you to identify obvious vehicle defects.

If you discover any problems, you must report these to the person in your company who is responsible for ensuring that the problem is fixed.

This is a vital first step in an effective vehicle preventive maintenance system.



**Global Rail Services**  
**Driver Safety Awards were**  
**received by the following:**

**Damien Hennessy** — Telecoms Operative (February 2020)  
**Mark Tilbrooks** — Electrician (March 2020)  
**Gordon Fallon** — Chargehand (April 2020)



Global  
Infrastructure  
Group

A Leading Provider Of Turnkey Solutions  
For The Rail Industry



Railway  
Construction



Civil  
Engineering



Telecomms



Multi-Utilities



Power  
Networks



General  
Construction



Design and  
Consultancy

Combining technical and innovative excellence with a  
real passion for detail and safe delivery of projects

[www.theglobalinfrastructuregroup.com](http://www.theglobalinfrastructuregroup.com)