



Global
Infrastructure
Group

Issue 24 2020

GLOBAL NEWS



In This Edition.....

- * **Project News**
- * **New Starters**
- * **Celebrations**
- * **A Day In The Life...**



globalnews@grcl.co.uk

Foreword

Firstly, I hope that all the Global Infrastructure Group teams in Ireland, the UK and Australia are keeping safe and well during these unprecedented times!

In our lifetime, we have never seen such a major event that has affected so many across the world in ways that would have been unconceivable some 6 months ago when this whole pandemic started. Hopefully, with concentrated efforts from Governments, Health organizations and indeed the Pharmaceutical companies, the hope is that we can eradicate this altogether and a vaccine will be found to help manage and control this virus in the future. One thing is for certain, the world we once knew will have changed considerably when we exit this.

I am extremely proud of our teams in each country and how you have deployed COVID safe practices and continue to positively address the changes in local and national requirements, keeping all our staff safe whilst managing the numerous work practices and requirements to keep our teams working on various projects across the globe.

We are very positive that throughout this pandemic we have implemented key controls to enable us to manage a mix of remote/office working and site working under the strict protocols identified in each country to keep performing for our clients whilst continuing to deliver safely at all times. The main industries we support, being power, telecoms & rail are the backbone of essential services within all countries we operate in and underpins the resilience of the services we provide to our various clients. I can remember in the late 1980's when I first started working in the rail industry in the UK, Europe was going through a recession, whilst many industries suffered inactivity throughout those industries, the rail industry continued providing critical project and maintenance services to keep the railway network moving during these difficult times. Once again in 2008, when we hit our next major recession, the rail, power & telecoms industries continued providing long and stable employment to many. To the present day, where we are again facing such uncertainty, the criticality of these networks in each country ensures we continue working, keep delivering and further demonstrates our reliance on these industries as a whole.

We have since passed the half-way mark for the year, I would like to take this opportunity to thank all our people, our suppliers and clients for helping us to deliver critical infrastructure projects, particularly under the extreme restrictions of COVID.

With an ever-growing order book and a commitment from Governments in each country to invest further in the rail, telecoms and power industries, we firmly believe that when we do exit this pandemic, the GIG Group will be in a much stronger position to continue to grow and support the numerous projects available for us to deliver across the Group.

Marco and I have always agreed on one thing, that our people are our business and with your continued dedication and commitment, we are best placed to ensure the continued growth and development of the GIG group. This has been our ethos for the past 19 years, and soon we will be celebrating the 20th year of the GIG group, and our hope is that we can celebrate this major milestone and our special birthday with you all.

Again, I thank all of you for your continued support and loyalty to the GIG business and may you and your families stay safe and positive throughout these difficult times.

Ivan Holloway

Ivan Holloway
Chief Executive Officer

**Passionate**

Committed in heart and mind to whole-heartedly embrace our core values and culture, without exception.

**People**

Growing our organisation from within, promoting and empowering our people, inspiring them to be the best they can be.

**Professional**

At all times we act with integrity, providing quality service, reliably and responsibly.

**Teamwork**

Working collaboratively whilst supporting and respecting each other's views.

**Responsible**

To consistently deliver quality, on time, safely and to budget whilst protecting our communities and the environment.



Mission & Vision

**Using the best mix of technology and tradition,
The Global Infrastructure Group empowers its workforce to deliver to
our clients the best possible standards of workmanship within the rail
industry at a competitive price.**



Thameslink Survey and Investigation Package Awarded to Global Rail Construction Limited

As part of the Thameslink Programme, the railway systems for London Bridge were completely remodelled to suit a new layout at London Bridge station and provide substantial capacity improvements to enable proposed current and future operational timetabling, this is referred to as the N421 Project.

The complexity of managing, staging and delivering the railway systems in order to meet the remodelling programme, has necessitated a requirement for the railway systems infrastructure to be surveyed, in order to

confirm its suitability and whether further upgrades and rectifications will be required.

To support these works, Global Rail Construction Limited (GRCL) has been awarded a lineside survey contract by long-term client BAM Nuttall, to undertake the necessary investigation and reporting of 44No Signal Gantries and their associated containment, which includes but is not limited to the following scope:

1. Structural condition surveys in relation to original Form A requirement for painting
2. The condition and positioning of cables on the structures including
 - a. The position of cables relative to associated tray work/containment (particularly noting areas where cables have no associated containment)
 - a. The type of signal cable (B or C)
 - b. An assessment of cable slack (or tension)
 - c. Any visible damage to cables
 - d. Any serrated edges on tray work/containment that could potentially cause damage to cables
 - a. Any structure concerns
 - b. Tagging and tracing of cables to ensure end to end point identification
 - c. Condition and suitability of the use of cable management to secure cables to containment in contrast to the existing Civils As-Built design

On completion of each survey GRCL review and discuss the photos and observations with the BAM team at a weekly Technical Interface Meeting and determine one of the following:

1. An agreed scope of residual works (with no further survey requirements) or,
2. The requirement for further detailed 'tag and trace' surveys

GRCL produce final survey reports, documenting the findings, associated agreements and will include any recommended remedial works to be undertaken, whereby GRCL can be instructed to complete the remedial scope.

Project Manager Barry Smith, is leading Global Rail Construction Limited's in-house team of self-delivery experts, who will be covering all disciplines including Civil & Structural Engineering, Signalling and E&P. Surveys are already underway and there are a number of Signal Gantries already completed, some remedial works instructed and on-going, with further awaiting instruction shortly.

MD Marco Lombardelli added this:

"Delighted to be awarded this multi-disciplinary package of works from our esteemed client BAM. The full suite of internal expertise will be managed and delivered by our in-house staff, something that we are immensely proud of."



Clacton Resignalling Project

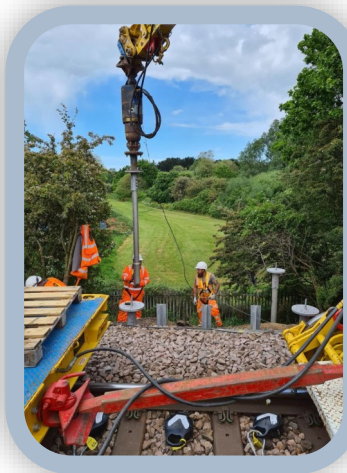
Our Global Rail Construction team has been progressing its D&C contract safely on the Clacton Resignalling Project. The team successfully designed, procured and installed a Double Staging on four screw piles on the down embankment. All risks were managed and mitigated by our site management team and our subsequent site delivery was deemed to be of the highest quality.

This was echoed by comments received from Adam Bell (NWR, DPE and Project Engineer Track):

“So far the quality of Global Rail Construction has been excellent in all aspects - design, build and paperwork.”



GREAT WORK TEAM



Ely to Peterborough – GRIP 4 Design Civils and E&P Award

Global Rail Construction Limited (GRCL) has been awarded a contract to deliver the Ely to Peterborough Design for both E&P and Civils (GRIP 4) on behalf of our client Atkins Global. The Civils design covers the review of GRIP 3 designs, surveys and Form 001. E&P Design includes surveys, load monitoring and cable calculations, Form A's for several Level Crossings and power supply schematics.



The Ely to Peterborough scheme is aimed at increasing safety at a number of Level Crossings and increasing the remaining life of the Signalling assets in a number of interlocking areas. The interlocking areas covered by this project are Downham Market, Kings Dyke, Kings Lynn Junction, Littleport, Magdalen Road, Manea, March East Junction, March South Junction, Stonea and Three Horse Shoes. The Level Crossings to be renewed in this project are Littleport MGH, Magdalen Road MCB, Manea MCB, March East MCB, March South MCB, Whittlesea MGH and Hargham AHB.

Having a multi-disciplinary workforce including design, civil and structural engineering and E&P expertise, along with in-house project management and having previously delivered time-pressurised, highly co-ordinated schemes, allowed Global Rail Construction Limited to provide the necessary tendered solution in order to satisfy the client of our ability to meet their requirements .

www.theglobalinfrastructuregroup.com



OUR GRCL TEAM DESIGNED & INSTALLED A NEW LEU ENCLOSURE HALF LOCATION BASE AND HARDSTAND ON BEHALF OF ALSTOM IN THE VICINITY OF PLASSER'S LEVEL CROSSING BETWEEN DRAYTON GREEN AND WEST EALING AT 6MILE 70CH.

ALSTOM

Global Rail Construction Ltd
is a Principal Contractor and a leading UK provider of design and build services to clients in the rail and transportation sector



Our **GRCL** team, are pleased to confirm that all planned Civils and PHCC relocation works, including all Electrical & Signalling testing back into service, were completed safely and to the desired programme at our London Bridge site on behalf of client BAM.

GRCL Head of E&P, Nick Turner added:

"The PHCC and transformers were successfully removed from trackside and relocated to ground level at Almond Road. The PHCC feeder cable was also disconnected from the Distribution Cubicle and recovered back to street level - great, timely and professional work delivered by all concerned."





Project Updates

Global Rail Australia Complete Track Upgrade for Yarra Trams

Global Rail Australia has undertaken a project to remove and replace worn rail on curves on ballasted track at Queensway St Kilda and we are pleased to confirm that all works have been successfully accomplished within the rail occupation, provided by Yarra Trams, with no technical issues.

The project was complicated by remote working; however, this was managed through a meticulously safe approach and a management presence throughout the works.

Works included rerailing both the Up Track and Down track curves, which covered the following managed scope:

- Unclipping rail
- Replacing worn rail with new 41Kg rail
- Welding and restressing
- Weld testing

All works were completed utilising in-house resources, supervision and plant over a single weekend and supported by a staging program and procurement plan, which were key to the success of the project. We are pleased to say that no reports or incidents were raised by the public or client.



Our vision is that everyone arrives for work healthy and leaves for home safely, everyday.

Global Rail Australia

5 Plane Tree Avenue
Dingley Village
Vic 3172

Australia

+61 (0) 3 9551 0465

Global Rail Australia has proven experience in delivery of the most exacting projects across a diverse range of service sectors.

Our in-house capabilities, our scale and our supply chain partnerships have allowed Global Rail Australia to deliver complex multi-disciplinary projects that make a positive difference to our clients, across the Australian infrastructure industry that we serve.

Project Updates

Global Rail Australia - V/Line Geelong Culvert – South Geelong

V/Line is undertaking a project for removal of existing Brick Culvert and replacing them with the Pre-Cast Box Culverts with Head Walls and attached with Hand Rails.

The track has been cut and 100T crane has been used to lift the culverts.

Global Rail completed the construction of a Culvert in Geelong, which included:

- a) Removal of track
- b) Removal of sleepers
- c) Demolition of existing brick culvert
- d) Excavate to formation
- e) Installation of base slabs
- f) Installation of box culverts
- g) Installation of head walls and hand rails
- h) Back Fill as per design
- i) Re Instate the track works

The works commenced in March 2020 and were completed in 2 weeks, as per the occupation completed culvert at South Geelong, VIC.



A DAY IN THE LIFE OF

In this issue, we meet Emma Russell, Commercial Manager for Global Rail Construction.

We find out a bit more about her.....

What do you feel most proud of?

I have twin girls, Phoebe & Jessica, aged 18 and I am very proud of them. Hopefully they will be off to University in September and start the next phase in their education.



What is your favourite music?

I like all sorts of music from classical to rock.

My family always moan on a Sunday morning when James Rhodes playing piano is echoing around my kitchen.

Why did you choose this profession?

My Dad was a carpenter and he told me I should become a "Quantity Surveyor" as he has never seen one do a day's work in his life!

How do you spend your free time?

Free time is rare, but when I do have free time I love to cook, I am a secret gamer, love anything technical and an avid reader. Also, I am trying to learn Spanish (Which is not going so well...)

Who do you most admire in life and why?

Hard one, probably my Husband (Phil) who has had to put up with me for so many years. Famous people would be Elon Musk or Steve Jobs. What can I say I am a Tech Freak!

What are you most afraid of?

Making tea as most of you know I try to avoid making tea at all costs and have many excuses.

What is your strongest quality?

I do not suffer fools

What is your weakest quality?

I do not suffer fools

What is a skill you'd like to learn?

Spanish and Piano. I have passed my Grade One piano and hoping in the near future to start my grade 2. Spanish is proving difficult but I need to learn as my best friend has moved back to Northern Spain and I need to visit.



If you could witness any event of the past, what would it be?

18th August 1969, Woodstock N.Y watching Jimi Hendrix performing.

If you could travel anywhere, where would you go and why?

I love America (East and West) and always travel there, hopefully when things go back to normal, I will be able to go back in the near future.

What was one of your most defining moments in your life?

Deciding school was not that bad and wanting to learn. I left it a little bit late, but managed to turn it around for my exams.

If you won the lottery, what would you do?

Retire and buy an Aston Martin.

If you were the Prime Minister, what is the first thing you would do?

As a country you would never want me to be Prime Minister and I would be terrible at the role. However, if given the opportunity I would try and sort out the bureaucracy and the many layers of management that seemed to exist within government bodies.





Project Updates

Zinfra – Essendon Substation – VEDN Project

GRA Networks have successfully completed their first contract with Zinfra / Jemena. The project began in May 2018, and was carried out over 3 stages.

SCOPE OF WORKS -

Zone Substation Essendon (ES) has two 20/27MVA power transformers operating at 66/11kV and eleven 11kV feeders supplying approximately 16,000 customers.

The two power transformers were manufactured by Wilson Transformer Company (WTC) and are 52 years old. The cellulose in the transformers' paper insulation has deteriorated to the extent that the transformers are at an increasing risk of failure. The paper insulation condition and hence the transformers had reached end of life and needed to be replaced to maintain customer supply reliability.

The No.1 and No.2 11kV switchboard were installed in 2013, at that time provisions were also made for a third 11kV busbar support to be installed. In November 2015, feeder ES22 was commissioned using the spare No.2 Cap Bank CB, as a result, there are no remaining available feeder exits. The installation of a No.3 11kV busbar support was required to add future feeders out of the zone substation.

The current feeders out of Essendon zone substation were heavily loaded and a new feeder was required to better manage the load at the zone substation. A new 1-2 66kV busbar support tie CB was installed in 2015. A new 2-3 66kV busbar support tie CB was required to provide switching for the new No.3 transformer. Works also included site drainage, the installation of a humeceptor and replacement of the control room roof, some internal doors and walls which were in poor condition, were also replaced.

Demolition, Relocation & Temporary Works

Demolition of existing transformer enclosures 1 & 2, GRA engaged a haulage company to remove 2 x existing transformers. Once the transformers were skated on the flatbed truck for removal, GRA then demolished and removed the 2 x existing enclosures, bunds, footings and associated walls.

Foundations, Bunds, Fire Walls & Removable Sound Walls for New Transformers No.2 & No.3

Construction of foundations with concrete bund, walls and buried conduits for the new No.2 and No.3 transformers. Due to the tight work site GRA provided Zinfra a detailed methodology of the construction of these 2 enclosures, specifically the installation of 22 new pre cast panels.

Each enclosure had approx. 20 conduit pop ups, 15 of which ran through the site back to the existing switch room. Once the 2 enclosures were complete and 2 new transformers were commissioned, 2 x new acoustic panel walls were installed.

These walls are fire rated, removable walls which allow them to be removed quickly should repairs need to be done on either transformer.

Project Updates

Combined Disconnect Switches (Ds) And Circuit Breaker (Cb) Footing

Installation of in-site concrete footing with hold down bolts for Jemena structures.

Disconnect Switches (Ds) Footings

Installation of in-site concrete footing with hold down bolts for Jemena structures.

Voltage Transformer (Vt) Footings

Installation of in-site concrete footing with hold down bolts for Jemena structures.

Busbar Support (Bs) Footing and Support Structure

Installation of in-site concrete footing with hold down bolts for Jemena structures.

Cable Trenching, Conduits and Pits

Approximately 100m of new in-site concrete cable trenching, conduits and pits between the new equipment building, the old building and the new transformer bunds.

Humeceptor & Site Drainage

One humeceptor was supplied and installed. Three new 100mm diameter ductile iron (DI) pipes were also supplied and installed to drain water/oil from the transformer bunds up to the butterfly valve. A second isolating butterfly valve was installed at the outlet end of the humeceptor pit. These pits are to accommodate for oil leakage as they can be then closed to contain the oil in the transformer bays.

Roof Replacement

Bondeck roof replacement to existing Switch Room

Earth Grid Trenching – GRA

Approximately 100LM of 450mm deep trenching for earth grid.

Refurbishment of existing building

Brickwork repairs, new vents installed to switch room and internal door repairs.





GRA
Networks
Australia

Project Updates

GRA Networks – Nokia/Vodafone 5G upgrade and RAN replacement agreement

GRA Networks has successfully signed a new framework agreement with Nokia. GRA Networks has now been awarded the contract to install New 5G Technology on the Vodafone Network. This includes the RAN upgrade of existing communication sites to support the new 5G technology. GRA Networks scope also covers the swap out of headframes, steelwork, all existing feeders and fibres to accommodate the new equipment, new fibre trunk cables and internal power upgrades.

Specific Project Deliverables Include:

- All works to be conducted under a SLO (Single Long Outage)
- Removal of all old steelwork and installation of new headframes/ Steelwork
- Removal of all old antenna and installation of New Antenna
- Removal of all old external equipment and installation of New RRUs
- Removal of all old Feeders/Fibres and installation of New Trunk cables
- Swap-out of existing PSU
- Swap-out of Huawei BTS equipment and replacing with Nokia BTS
- Site integration and test calling

GRA Networks – Nokia/PTV upgrade program

GRA Networks has also been awarded the Contract from Nokia to upgrade the existing 2G equipment on the Public Transport Victoria network. 109 sites on the DTRS system require upgrading due to “end of life” cycle of the existing equipment.

Specific Project Deliverables Include:

Day works

- Preparation of new BTS cabinets
- Delivery of new BTS to site
- Mains Power upgrade
- Preinstallation of BTS onto new plinth

Night works (with 2 hrs outage window)

- Power up and cutover new BTS
- Decommission old BTS
- Removal of old BTS from site
- Site integration and test calling

GRA Networks are delighted to be delivering this framework for Nokia as an approved supplier and look forward to being able to develop this relationship over the coming years.



Avetta



Cambridge Re-signalling GRIP4 Survey Contract Award

Global Rail Construction Limited (GRCL) are delighted to announce the award of a new rail contract for long-term client Alstom, for GRIP4 ECI survey works on the Cambridge Inner and Outer Re-Signalling & Re-Control Project.

The overall project aim is to improve the reliability and performance of the signalling system in the Cambridge interlocking area. As part of the project, the existing assets are to be surveyed and their continued use validated. Geographically the project covers roughly the track on the approaches to a triangle between Cambridge, Ely and Bury St Edmonds.



In summary, GRCL's survey works include the following items:

- Surveying, rodding and roping 42No Under Track Crossings & provide condition and capacity report
- Surveying, rodding and roping 33No Under Road Crossings & provide condition and capacity report
- Surveying existing S&T Troughing & providing a condition and capacity report (inc. vegetation management where necessary), where proposed new feeder cables are to be installed – approx. 100km
- Conducting Ground Investigation and providing condition reports at Signal locations, Level Crossings, Station Platforms, PSP and REB sites
- Trial Hole Pits at each new UTX or URX Chamber location
- Conducting Load Monitoring and providing condition reports
- Topographical surveys
- Conducting Ground Penetrating Radar surveys
- Conducting Lighting Lux Level surveys
- Conducting GPR surveys
- Conducting gauging surveys
- Undertaking soakage tests and slit trench surveys

Works will be carefully co-ordinated and delivered during Rules of the Route published possessions/line blockages and isolations with safety critical support, during both midweek and weekend days/nights. Additionally, there are a number of longer, disruptive possessions with isolations to be utilised.

There are many risks associated with working on the rail infrastructure. GRCL's in-house project management team will be responsible for the delivery of this package of works and will seek to carry out a full assessment of the risks in order to feed into the overall design process. GRCL's approach is to think about health and safety in terms of buildability, maintainability and usability at all stages of the design process, so it becomes a natural part of the design. At each stage, GRCL's delivery team will identify and eliminate hazards. They aim to maintain close communication with key project stakeholders, to support the reduction of the risks that may arise during construction work, which will enable the plan to be kept on track without exception.



Project Updates

Global Rail Services Completes Unique Project for Rosslare's Europort – Replacement and Extension of the Berth 1 Linkspan Transition Ramp

Global Rail Services Limited (GRSL) are pleased to confirm that the first passengers were able to use the newly constructed Linkspan Bridge on 3rd July 2020, just 4 weeks after it was taken out of commission, following the successful completion of their contract for the complex replacement of the Berth 1 Linkspan upper deck transition ramp for Irish Rail. Although the works are contracted by Irish Rail, because the location was inside Rosslare Harbour, GRSL were working under the daily jurisdiction of Rosslare Europort.



The works to the upper tier, which were conducted to a demanding berthing schedule, where the lower tier had to remain operational, to enable ferries to operate normally. Activities were planned around a live working International Ship and Port Facility (ISPS), and specifically comprised the removal of the existing and installation of a new transition ramp at Berth 1, on the Upper Tiered Linkspan, to accommodate the new WB Yeats Ferry.

GRSL's contract, which commenced on 4th June 2020, provided for the following civil works:

- Prefabrication and delivery of the new ramp, torsion beam, fingers and handrails;
- The removal of existing transitional ramp, torsion beam, hydraulic arms, and mid bearings;
- Installation of the new ramp on site;
- Commissioning and testing of the new transitional ramp;

Following completion of this contract, GRSL have increased the previous linkspan by 1.6m and in doing so, installed nearly 40 tonnes of heavy structural steel section to an Execution Level of 3 (EXC3) standard.

During the project a number of challenges were encountered and expertly met by GRSL's team of structural, civil and project managers, whilst still maintaining program, these included:

- The structural steel was required to be at an Execution Level of 3 (bridge standard), which required ultrasonic testing of the welds and third-party inspections;
- Conducting the works in a restricted access facility and by its very nature a live port and marine environment;
- Delivering a project which was effectively a moving bridge, that actually connects to the back of a boat when moored and with vehicles traversing between;
- The work was at the water's edge;

Global Rail Services

Unit 516a Grants Rise
Greenogue Business Park
Rathcoole, Co Dublin
D24 FH56
Ireland
+353 (0) 1 458 8540

Global Rail Services has proven experience in delivering some of the most exciting projects across a diverse range of service sectors.

Our in-house capabilities, our scale and our supply chain partnerships have allowed Global Rail Services to deliver complex multi-disciplinary projects that make a positive difference to our clients, across the Irish infrastructure industry that we serve.



Project Updates

- Project and site requirements for both the client (Irish Rail) and at the harbour for Rosslare Europort;
- Due to Covid-19, structural steel deliveries were challenging, which meant GRSL had to send lorries to the UK to collect the steel;
- All connections and bolts on the existing bridge were welded, so the elements had to be cut out as they could not be unbolted;
- On removal of the existing torsion beam, the bearings were unserviceable on first inspection and had to be replaced at short notice;
- The as-built drawings were incorrect, which meant adaptations to design after site investigations, internal strengthening of the torsion beam, alternate lifting points and alterations to the actuator arms.

GRSL Contracts Manager Paul Connell, was closely involved and added:

“This complex, fast-track project has been successfully completed within the allocated shut down. We have worked closely with our sub-contractor JA Engineering, Irish Rail & Rosslare Harbour to deliver these works.

Despite the unforeseen challenges faced, particularly in the current climate, the works have been completed to the delight of the customer – Irish Rail – and the end user Rosslare Europort. I take my hat off to all those involved in successfully executing a very bespoke project.”

Our Markets

Global Rail Services Ltd is part of the Global Infrastructure Group and is a leading Irish provider of design, construct and commission services for clients across a wide range of engineering and infrastructure sectors

- Civil Engineering
- Building
- M&E
- Permanent Way
- Train Support



Emergency Bridge Repairs - Arklow Station

Following a road traffic collision (RTC) in the early hours of 17/07/2020, where the granite wall of OBR 254 was knocked down on to the track below following an impact from a van that struck the wall, **Global Rail Services (GRS)** were tasked with removing the debris from the track and repairing the wall.

GRS swiftly mobilised to site to secure the works area which was hazardous with a high and open edge over the track and installed traffic management on the road leading to and from the bridge to prevent further incidents.

With close collaboration and following an inspection of the wall by Irish Rails structural engineer and the local authority engineer it was decided that the wall would need to be immediately repaired and the road surface would need to be cut and excavated to allow the wall to be reconstructed to its original position. The council engineer had given a 10-day programme to have the road reduced to 1 lane of traffic. The affected area of track was closed off and removed from use to prevent trains from entering where loose masonry had the potential to fall and strike a train.

Over the course of Friday morning GRS sourced a subcontractor stonemason to strip down and rebuild the lime mortar granite wall. A GRS civils team and project manager were also put together at short notice to carry out the excavation and assist with the safe execution of the works. The works could only be carried out under TIII absolute possession, the hours of possession were 8pm to 5am.



Project Updates

GRS scope of works for the emergency repair involved:

- Set up and maintenance of traffic & pedestrian management
- Removal of masonry from the track
- Fencing off of the track
- Supply a boom lift MEWP for access to the track face wall
- Supply tower lighting to illuminate the road and track
- Strip down the existing in situ damaged wall
- Excavate the road surface adjacent to the wall
- Rebuild the lime mortar wall reusing the existing granite cut sections
- Paint the wall with a black reflective paint
- Install chevron signage along the full length of the bridge wall
- Reinstate the road surface to local authority & purple book specification

The wall was rebuilt over the course of 3 nights and the painting, chevron sign installation and road reinstatement were completed over the following 4 days by the 23/07/2020, thereby completing the works 4 days ahead of schedule.

Irish Rails regional manager for the area commented about his satisfaction with the completed works, ***“we should have got you to repair the rest of the wall because the repaired wall looks better than the rest of it”***, which demonstrates the quality of the work carried out by Global Rail Services.





Project Updates

Global Rail Services - GSMR Civils Works, Package 3A (Kerry to Cork line and Cork to Cobh line)

After the successful completion of packages 2F and 2I, GSMR 3A has been successfully awarded to **Global Rail Services**. The GSMR system is a vital part of the network to monitor all train movements on the entire network.

This package contains a total of 17 sites. Works involved throughout the project will be as follows:

- Community liaison throughout the project.
- 11no. sites will require two types of piling, i.e. SFA piling and ODEX piling to depths of 12m.
- Soil nailing will be required on a site with very limited access.
- Installation of Mast/TER bases for 9no. 30m Masts and 8no. Monopoles.
- Removal of hazardous materials and demolition of an old disused Gate keeper cottage.
- Relocation of existing TER rooms.
- New access roads.
- New TER compounds.
- Crane Lifts
- Installation of all Masts/Monopoles.

Works has commenced on 3 no. sites and progressing well. Green zones have been set up under Irish Rail Look out protection.

One site has been completed to date and ready for Monopole installation once sufficient curing time achieved.





Project Updates

Global Rail Services - 110 KV

Little-mills Station Dundalk Co Louth.

GRSL was commissioned by ESB networks to install a new 6way 38KV ducting for the new Wuxi Biologics Ireland plant in Dundalk Co Louth.

This is the first 38KV job which GRSL has completed for ESBN. This was a very complex job due to working inside an operational substation with 110KV, 38KV and 20KV underground lines and overheads lines.

Tight timelines were added due to the outage required on the existing 38KV lines to divert the existing 38KV and the commencing of the new station build for Wuxi. As this is an operational substation and a operational ESB telecoms, site access had to be maintained throughout works 24/7.

Works involved throughout the project were:

- Installation of 4no. 110mm ducts for new 38KV and Telecoms.
- Installation of 2no. 160mm ducts for new 20KV.
- Cabling pulling and testing of ducts.
- Complete reinstatement.
- Provide assistance with ESB Networks cable joiner crews.

Works were completed on time and within budget and ESB networks have now commissioned the new 38KV line to allow works to commence for the new substation.



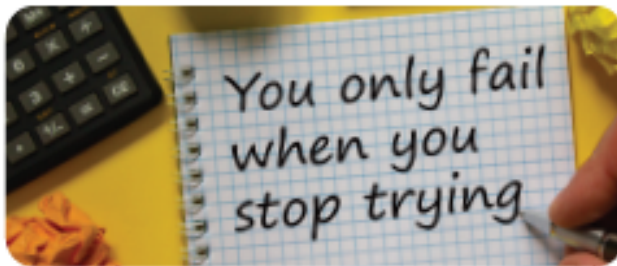
Validium Newsletter

for employees

August 2020



Cycle To Work Day
8 August 2020



Does Fear Of Failure Stop You Doing Things?

The primary role of fear is to protect us, but a fear of failure can be a significant obstacle which prevents us from pursuing our life goals. This keeps us safe but doesn't allow us to grow, try new things, take on new challenges or be exposed to new situations and experiences.

Fear of failure is the emotional, cognitive and behavioural reaction to negative consequences for not achieving a goal. This can lead to an avoidance of trying anything new or it can influence our goal setting – sometimes encouraging us to aim low or avoid a potential situation where we might be evaluated or judged.

Fear of failure can affect our physical and mental health. We may experience fatigue, feel emotionally drained or be more dissatisfied with life. Our performance may be negatively impacted as we struggle with our emotional reactions to:

- feeling embarrassed if we fail
- our sense of self-worth
- how failure might affect our social standing
- an uncertain future
- letting someone down

To manage a fear of failure try to visualise doing something that you fear – and see yourself doing it well. Focus on learning and expose yourself to new situations. In the words of Eleanor Roosevelt - *'do one thing every day that scares you'*.



Managing Unconscious Bias

Unconscious bias can be the biggest stumbling block to diversity. We are hard-wired to make immediate judgements based on our perceptions, experiences or prejudices, before we know anything about a person or a situation. This is because our primitive brain decides that we are safe with people who look, think and act in a similar way to ourselves. We have to deal with a myriad of information every day so the brain uses these short cuts to help us to make quick decisions about people or situations, without knowing the full facts. These automatic preferences and prejudices contribute to our safe thinking thus blocking diversity and innovation from our lives, narrowing our experiences and creating unfounded bias or even discrimination.

To help manage unconscious bias:

- take some time for self-reflection on your initial thoughts before you act
- try to keep perspective and look at the bigger picture
- be honest and aware of your unfounded biases to help you to recognise them in new situations
- visualise positive interactions
- be respectful
- accept that you will have unconscious bias but, unless it is a matter of safety, deal with it appropriately rather than with a knee jerk reaction



Take Stock Of Your 'Financial Wellbeing' This Summer



This, perhaps, quieter and closer to home summer does give us the chance to take stock of our current habits, such as how we spend our money and why. Because, let's face it – who knows what is around the corner! You may have heard of the term 'financial wellbeing' and wondered what it is and how people get good financial wellbeing, but first we need to really understand our finances in order to have good financial wellbeing...

Find out more by visiting the vClub Debt and Money Blog today!



Herts Young Homeless (hyh) are one of numerous charities Global Rail Construction continue to support. Global Rail Construction kindly made a donation to the charity towards **Charlie's Mont Blanc climb**. Charlie has really wowed everyone with his wonderful challenge of taking on the 4,810 meters of Mont Blanc whilst raising such an incredible amount to enable **hyh** to continue providing vital services for vulnerable young adults across Hertfordshire.

hyh were so grateful for our support, they wanted to share their gratitude with us; ***"I wanted to get in touch to say a huge thank you for the extremely kind, generous donation that you recently made to Charlie's Mont Blanc climb. We are so touched by your continued support not only for our fundraising but also for our supporters fundraising too."***

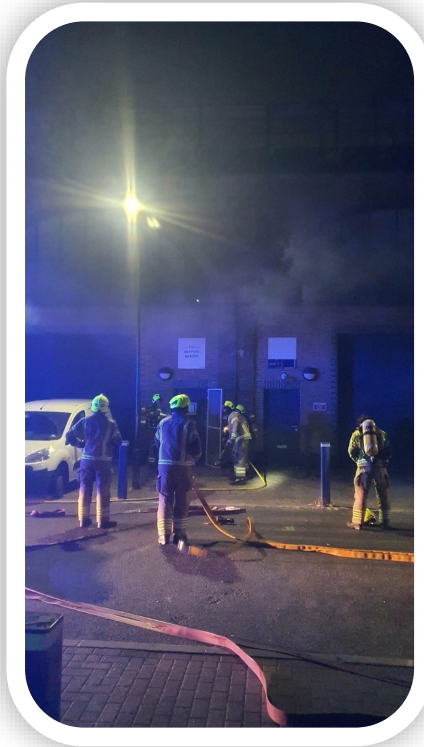
On behalf of Charlie and the rest of the team here at hyh, thank you so much for your donation and support for our work throughout what has been an uncertain and challenging time."

CONGRATULATIONS & THANK YOU
TO ALL INVOLVED IN THE SUCCESSFUL
COMPLETION OF THE GRCL NICEIC
AUDIT. PARTICULAR THANKS TO PHIL
GUINAN-BROWNE (GRCL ELECTRICAL
PROJECT MANAGER—NICEIC
QUALIFYING SUPERVISOR) FOR HIS KEY
INPUT AND EXCELLENT OUTCOME.



Our vision is that everyone arrives for work healthy and leaves for home safely, everyday.

CLOSE CALL



When on site at Rotherhithe Estate, Bermondsey, George Stan (GRCL Supervisor) prevented a fire spreading.

Here is George's comment on the situation, ***"I was at the van sorting out paperwork when I could smell a burning scent. When I looked around I followed the smoke and noticed it was coming from the ventilation pipes at The Snapery Bakery."***

At first, I thought there was work being undertaken in the bakery however, after I knocked on the door and no one answered I realised the bakery was on fire. I called the GRCL team out of the substation and called the Fire Brigade immediately.

They arrived quickly, within 5 minutes, slammed through the metallic door and put the fire out. Apparently the fire was coming from one of the ovens inside the bakery".

Had George and the GRCL team not acted so quickly, the situation could have been a lot worse as that unit is positioned under 3 electrified DC tracks.

Everyone is safe and damage to property and surrounding businesses minimal.

**THANK
YOU**

Our **Global Rail Construction** team has successfully completed their RISQS audit.

We are pleased to say that we have not received any NCR's or Observations - a great achievement.

Thank you to Peter Coleman (Head of Compliance) and the supporting GRCL team for all their efforts.

The audit was wide ranging and covered many different disciplines (Design, Civils, E&P, Signalling, Track etc) and multiple projects.



globalnews@grcl.co.uk



SHARE YOUR NEWS

Tell us what's happening or send us your pictures or videos.

MEN'S HEALTH WEEK

The Men's Health Forum is a charity that works to improve men's health services and the health of men.

Men's Health Week runs every year in the week before Father's Day.

This year Men's Health Week ran from the 15th—19th June.

The theme for 2020 is 'Take Action on Covid-19'.

The Men's Health Forum looks at what can be done to prevent the virus doing more damage.

1. take action to avoid spreading the virus
2. take action to get the best out of lockdown and the 'new normal'
3. take action to beat 'underlying conditions'

One man in five dies before the age of 65.

TOGETHER we can change that.

MEN'S HEALTH FORUM 

<https://www.menshealthforum.org.uk/mhw>



Mental Health Awareness Week,

hosted by the
Mental Health Foundation,
took place from 18-24 May 2020.

The theme this year was kindness.

Whilst the Global Infrastructure Group also reflected on the week with kindness, Patrik Papushi (GRCL Supervisor) was recently driving along the A14, travelling back from Wellingborough, when he saw a vehicle on fire in the road.

He instinctively pulled over, took out the fire extinguisher from his van and went to help the unfortunate driver who was in distress and trying to contact the emergency services.

Patrik managed to prevent the fire from spreading out of control by using the fire extinguisher until the fire brigade arrived on scene.

What an amazing act of help and kindness Patrik -

We Are All Very Proud of You!



globalnews@grcl.co.uk



SHARE YOUR NEWS

Tell us what's happening or send us your pictures or videos.



HAPPY BIRTHDAY...

A very Happy **50th** Birthday to Emma Russell
(GRCL Commercial Manager) who celebrated
her birthday on the 18th July .

We all hope you had a wonderful time celebrating this
milestone birthday.

HAPPY BIRTHDAY...

A very Happy **30th** Birthday to Carmel Juanillo
(GRCL Office Administrator) who celebrated
her birthday on the 28th May.

We all hope you had a wonderful time celebrating
this milestone birthday.



HAPPY BIRTHDAY...

A very Happy **50th** Birthday to Henry Bonuah
(GRCL HS&E Manager) who celebrated
his birthday on the 23rd June.

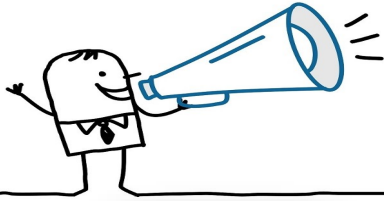
We all hope you had a wonderful time celebrating
this milestone birthday.



SHARE YOUR NEWS

Tell us what's happening
or send us your pictures
or videos.

globalnews@grcl.co.uk



CONGRATULATIONS...



Joe Cherrington
Senior Quantity Surveyor

WELCOME to our new starter, Joe Cherrington, GRCL Project Quantity Surveyor.

We wish you every success in your role and look forward to working with you.

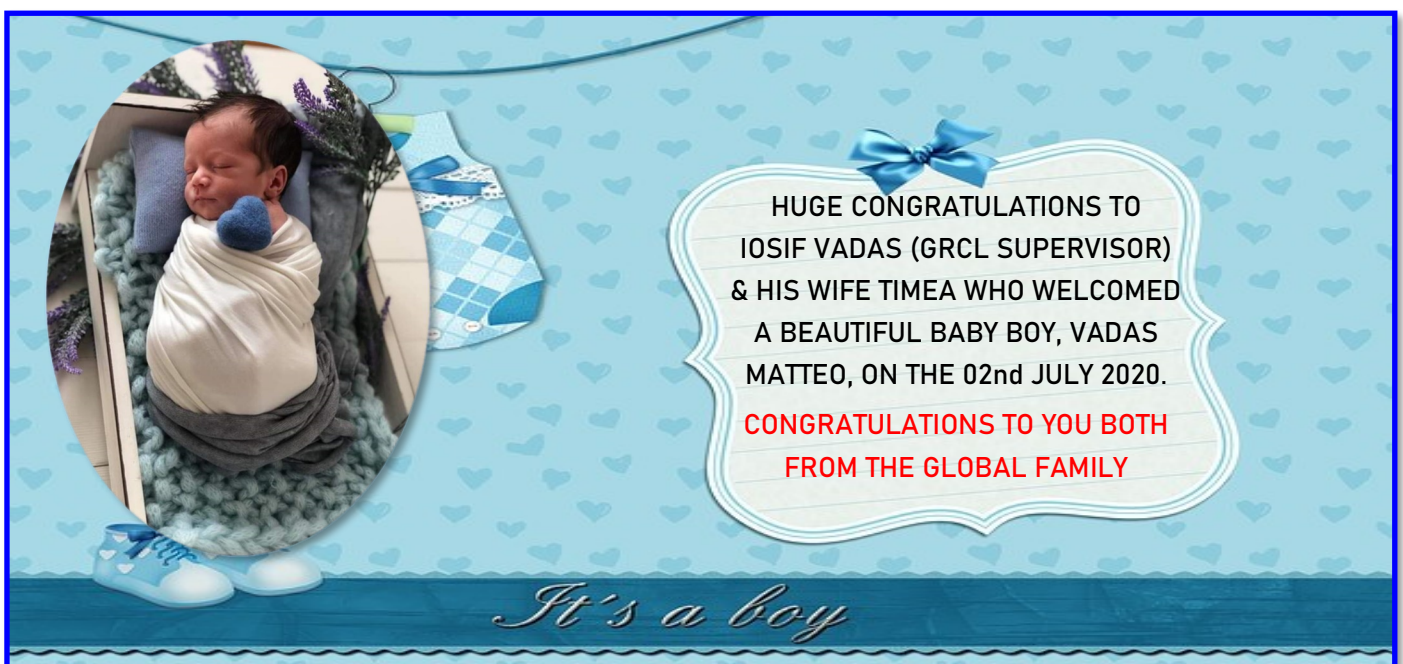
**Congratulations & Welcome
To The Global Family**



CONGRATULATIONS

*to Para Pratheeb (GRCL Accounts Manager)
on 10 Years Service*

Marco Lombardelli (Managing Director) shared his congratulations to Para, ***“Just a quick e-mail to congratulate you on reaching this fantastic milestone. You are a credit to the business and you should be proud of the personal and career development you have made with your time at GRCL. Hopefully it will not be too long before I can shake your hand, touch elbows or kick ankles (subject to latest government guidelines) in proper congratulations. Well done again and here is to the next 10 years!”***





Global
Infrastructure
Group

A Leading Provider Of Turnkey Solutions
For The Rail Industry



Railway
Construction



Civil
Engineering



Telecomms



Multi-Utilities



Power
Networks



General
Construction



Design and
Consultancy

Combining technical and innovative excellence with a
real passion for detail and safe delivery of projects

www.theglobalinfrastructuregroup.com