



GLOBAL NEWS



In This Edition.....

- * **Project News**
- * **New Starters**
- * **Celebrations**
- * **A Day In The Life...**



Foreword

Welcome to another edition of Global News and our final one for 2020!

Welcome to another edition of the Global News Magazine. I am sure you will all agree that this publication provides valuable updates to the Global Infrastructure Group and is a fantastic mechanism by which the different organisations can keep up to date with new developments and progress across the GIG Family and a really positive way to sign-off 2020. I really hope you enjoy the read!

It is always remarkable from reading the updates from across the group, particularly in this and in more recent editions, that our project teams are involved in the delivery of some really exceptional and high-profile projects. All being delivered safely across various climates, demanding environments and not to mention time zones! However, this year in addition to everything else we have had to overcome, the world has been faced with a serious pandemic, COVID-19. This has affected us all in one way or another and at time of writing, has been responsible for nearly 1.5m deaths worldwide. These are extremely sad and frightening statistics and as a group, we have worked really hard this year and throughout our operations to ensure that the necessary PPE, briefings, training, familiarisation and required risk assessments have been reviewed, enhanced and implemented, where necessary, to ensure we keep our people safe and out of harm's way. With more than 20 vaccines in development worldwide to combat COVID-19, we have to remain positive and believe that with the launch of a vaccine in 2021, the world will be a much safer and healthier place.

With the serious impact of the pandemic, the GIG Group has continued to grow and develop its services to meet the continued versatility of the industries we support, maintaining our professional approach with our commitment to deliver safely each and every time. Again, safety performance throughout this year has been exceptional, our focus and direction has continued to ensure we deliver consistently and are recognised as '**best in class**' and '**the partner of choice**' for our clients and our priority will continue to be focussed on keeping our people safe.

We will also be celebrating a momentous occasion in 2021, with Global Rail Construction and Global Rail Services being 20 years old! It has been an exciting period and one that has really seen our business grow and develop itself into a partner of choice and a business that can be relied upon. A number of the original team still provide the heart and soul of the company, both Ivan and I would like to personally thank all of you for your continued hard work and loyalty leading to this anniversary. Commercially we hope to finish the year strongly across the GIG Group considering the challenging year we have all experienced and will have shown growth despite the doom and gloom of the broader economy. As we plan events, launches and improvements for 2021, together with a healthy and growing orderbook, we certainly hope to continue that progress. We very much appreciate your continued and on-going support and look forward to a successful 2021 and working closely with you all.

May I therefore take this opportunity on behalf of the wider management team at the Global Infrastructure Group, to wish you and your families, our clients and our supply chain partner's a very happy Christmas and healthy and COVID-19 free new year!

Kind regards

Marco Lombardelli
Managing Director

[#Keepsafe](#)

[#Staypositive](#)

[#Staywell](#)

[#MerryChristmas](#)

[#Familytime](#)



Passionate

Committed in heart and mind to whole-heartedly embrace our core values and culture, without exception.



People

Growing our organisation from within, promoting and empowering our people, inspiring them to be the best they can be.



Professional

At all times we act with integrity, providing quality service, reliably and responsibly.



Teamwork

Working collaboratively whilst supporting and respecting each other's views.



Responsible

To consistently deliver quality, on time, safely and to budget whilst protecting our communities and the environment.



Mission & Vision

**Using the best mix of technology and tradition,
The Global Infrastructure Group empowers its workforce to deliver to
our clients the best possible standards of workmanship within the rail
industry at a competitive price.**



Global Rail Construction Limited Secure Feltham Resignalling Phases 3 & 4

Our UK team are delighted to announce their award as Principal Contractor for the design and construction of the Advanced Civil Engineering works for Phases 3 & 4 of the Feltham Resignalling Project – having submitted a most detailed and comprehensive response to the tender.



Global Rail Construction Limited will deliver the full GRIP 5-8 design and construct contract, which covers civil and structural engineering works on Network Rail's Wessex Route. Managing Director of Global Rail Construction Limited, Marco Lombardelli, was quick to praise his team:

"This is the culmination of a fantastic team effort. We are delighted to be back at Feltham, supporting our partner Network Rail to deliver first-class design and build solutions that puts the passenger first."

The Feltham Re-signalling project forms part of the Signalling Renewals/National Operating Strategy (NOS) scheme, which is intending to renew the life-expired signalling infrastructure in Feltham and Wokingham areas to the modern equivalent form.

The total scheme covers the renewal of 538 Signalling Equivalent Units (SEUs) and the full geographical work-scope covers in excess of eighty miles of railway lines.

Global Rail Construction Limited is part of the worldwide Global Infrastructure Group and is a leading UK provider of design and build services to clients in the rail and transportation sector. The company is a Principal Contractor for UK mainline and metro railways across a number of disciplines, which include signalling, mechanical, electrical and power (MEP), telecoms, civil and structural engineering, maintenance and renewal – providing fully tested and commissioned services on both Network Rail and Transport for London controlled infrastructure.



ATKINS

Member of the SNC-Lavalin Group



Our GRCL team recently completed a major milestone on the Clacton Resignalling Project on behalf of our Client, Atkins Global. Over week 24, works were carefully planned and successfully completed during 2 weekend day shifts, with all staff briefed to ensure adherence to the safe distancing requirements.

Works included:

- * Delivery and installation of driven piles and top hats and boxes
- * Drilling and fixing cable tray
- * Delivery, installation and refurbishment of trough route
- * Delivery and installation of an SPT walkway
- * Trial excavations and core drilling
- * Track monitoring for all signal pile locations
- * Recovery works including; troughs, lids and spoil

GRCL also supported our client with supplying staff to investigate an existing trough route and assisted with the installation of an equipment case onto a staging platform.

A positive client testimony was received:
“Week 24 was hugely important for CEC and the strong progress made puts us in a good position going forward. Please pass on Atkins thanks to all the GRCL team involved.”



Our UK Global Rail Construction team have completed the restoration works to the Goods Shed at Wellingborough Station; this has been an interesting project, working on a listed building on a station platform.

Looking at the images below, GRCL are proud of the transformation that has been completed and hope this building will provide much enjoyment for future generations.

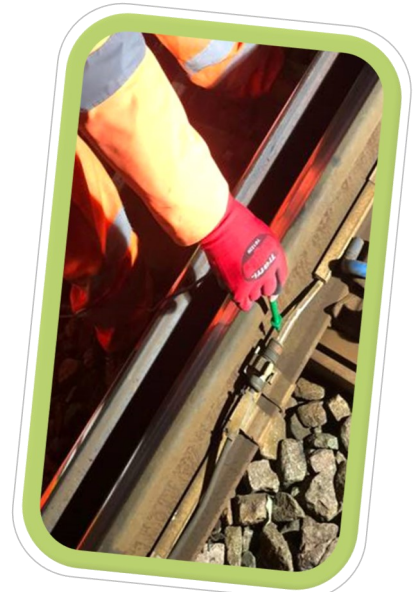
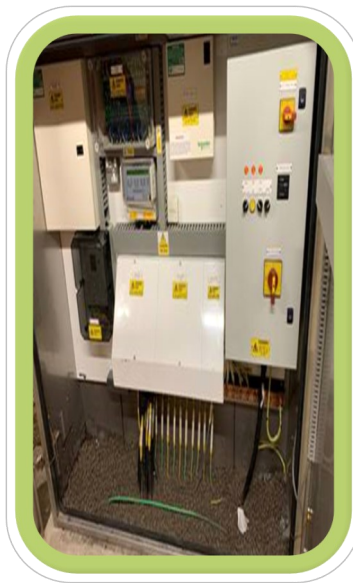




Global Rail Construction E&P teams have been working both day and night shifts at London Bridge to fulfil the company's Thameslink programme requirements.

The day teams have been completing off track points heating remedial works such as re-labelling and re-terminating cables - bringing the installation up to Network Rail and BS7671 standards.

The night teams have successfully undertaken testing to the on track points heating equipment - in challenging working conditions - and have identified several safety concerns, which have been close called and made safe as required.





Project Updates

Our **Global Rail Construction** team's works are progressing well on the company's Barking Riverside Rail Extension Project. Week 36 has seen the team provide the necessary ancillary civils works in readiness for a new REB installation.

The area for the new REB was originally a Relay Building, which was removed by the project some months ago, leaving the concrete slab still in place. GRCL's prep works involved the removal of the existing concrete base, preparation for the new base, associated trough routes and an Earth Farm.



Mechanical, Electrical and Power

Mechanical & electrical services provided by Global Rail Construction are constantly upgraded through training and development and are consistently delivered to the highest specification.

Design and project management of these specialist services are deployed on projects such as sub-station refurbishment and new build, station refurbishment and new build, signalling equipment room fit-outs, station platforms and car park lighting.

The company provides electrical condition reports and undertakes the installation and testing of lineside feeder cabling, fire detection systems, CCTV/access/security systems, building management control systems, HVAC and cable installation and management including lighting control systems.

Global Rail Construction Ltd
is a Principal Contractor and a leading UK provider of design and build services to clients in the rail and transportation sector



Global
Rail
Australia

Project Updates

Global Rail Australia Awarded Significant Construction Project for Development Victoria

Global Rail Australia has commenced a significant civils and structures contract with Development Victoria to upgrade pedestrian access between Spencer and Flinders Street in Docklands, Melbourne. The Rail Undercroft site had been closed off to the public during construction of Lendlease's Melbourne Quarter, and includes approximately 1000sq.m of land underneath the rail viaduct between Spencer and Flinders Street, Docklands. It will reopen as part of the upgrade works in early 2021, creating a pedestrian thoroughfare connecting the corner of Spencer Street and Flinders Street to Lendlease's Melbourne Quarter Plaza.



Global Rail Australia's pedestrian upgrade works include:

- Removal of the existing hoarding and surface finishes
- Bulk excavation of existing ramp
- New drainage and lighting
- New bluestone pavers and access ramp
- New landscaping and handrail
- Associated electrical works

All works are executed during live rail operations above the work location under supervision. Demarcation of the site has been undertaken and will be maintained throughout the works between the Melbourne Quarter apartments and Spencer Street. A Traffic Management Plan was completed which includes a 3-month lane closure and hard barriers along Flinders Street to maintain safe pedestrian access.

Global Rail Australia's staging program, procedures and procurement plan will play an important part in the success of this project.

Throughout the works, Global Rail Australia's project team will work in close co-operation with Development Victoria and other key stakeholders to ensure a cohesive and timely delivered project.

The site team are also pro-actively contributing to the discussions on management of COVID-19 and works are proceeding with all necessary measures in place

Global Rail Australia

5 Plane Tree Avenue
Dingley Village
Vic 3172

Australia

+61 (0) 3 9551 0465

Global Rail Australia has proven experience in delivery of the most exacting projects across a diverse range of service sectors.

Our in-house capabilities, our scale and our supply chain partnerships have allowed Global Rail Australia to deliver complex multi-disciplinary projects that make a positive difference to our clients, across the Australian infrastructure industry that we serve.



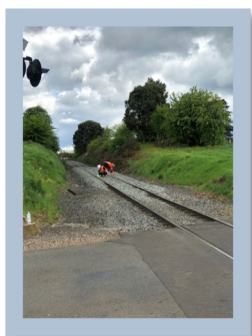
Project Updates

Global Rail Australia has been awarded 1000 Thermit Welds for West Coast Wilderness Railway in Tasmania. The West Coast Wilderness Railway is a reconstruction of the Mount Lyell Mining and Railway Company railway in Tasmania between Queenstown and Regatta Point, Strahan. The project is expected to last 3 months and then return to carrying out re stressing of the track.



Global Rail Australia's weld teams are welding the rails in to strings and then they are being transported to site using a train and flatbed wagons. GRA are responsible for all rail welding, site lay out and weld testing.

Global Rail Australia are pleased with the successful outcome of our contract renewal with TASRAIL to continue to maintain the Tasmania Railway. The track work defect removal project includes rail stressing, re railing and re sleepers, turnout works and mud hole scopes. Global Rail Australia have completed an additional phase of their works on behalf of Tasrail. This package is part of 7Km widening re railing in Penguin. Not many jobs are as scenic as this one. Global Rail Australia are soaking up the challenge of re-railing utilising 47-50 kg slave rails between trains.



Global Rail Australia have also started ultra-sonic testing of over 1,500 welds that have been completed across Tasmania. For both West Coast Wilderness and TASRAIL projects.



MTM – High Bushfire Risk Area (HBRA) Asset Inspections

MTM is currently undertaking a project for High Risk Bush Fire (HBRA) Asset Inspections of various Metro lines which could be potentially affected from previous bushfires in early 2020.

This project involves the visual inspections

of the MTM owned assets in their rail corridor and also the visual inspections of 1800 electrical structures, 400 poles (lights, CCTV) and 32 substations.

The scope of works is as follows:

- Overhead electrical asset inspections on the rail corridor located along the track
- Light poles in the rail corridor, among the platforms and stations car parks
- Signal assets
- CCTV assets
- Substations located in the rail corridor
- Bush fire walk exam along the designated lines as per below:
 - ⇒ Belgrave Line (Ringwood - Belgrave)
 - ⇒ Cranbourne Line (Dandenong - Cranbourne)
 - ⇒ Hurstbridge Line (Clifton Hill - Hurstbridge)
 - ⇒ Pakenham Line (Dandenong - Pakenham)
 - ⇒ Sunbury Line (Footscray - Sunbury)
 - ⇒ Craigieburn Line (Kensington - Craigieburn)
 - ⇒ Mernda Line (Clifton Hill - Mernda)
- Reporting the inspected assets details as per preferred format requested by Client
- Locate the asset on the rail corridor
- Record the visual inspections of the asset (photos and condition of asset)
- Report the details of the information into the required format
- Assisting MTM in identifying the defects on the rail corridor



Global Rail Australia

5 Plane Tree Avenue
Dingley Village
Vic 3172

Australia

+61 (0) 3 9551 0465

Global Rail Australia has proven experience in delivery of the most exacting projects across a diverse range of service sectors.

Our in-house capabilities, our scale and our supply chain partnerships have allowed Global Rail Australia to deliver complex multi-disciplinary projects that make a positive difference to our clients, across the Australian infrastructure industry that we serve.



Project Updates

Global Rail Australia and OMEXOM

have delivered this project together by investing their time and expertise. It was a great collaboration in achieving this project on time with no safety concerns.

Omexom provided the required qualified inspectors to certify the assets, whereas Global Rail supervised and monitored the assets.

All assets were inspected in a live and planned occupation operational environment under supervision. The works commenced in August 2020 and the Client is extremely impressed and satisfied with the way GRA have executed and finished the inspections.

GRA have proposed an alternative process to support the inspections by providing additional manpower to the inspection teams, who have vast knowledge of relevant aspects of civil and track requirements. It helped to qualify the right condition of the assets and support the inspections team throughout the project. The progress of the inspections was achieved prior to the planned program with implementation of additional support our Client has taken this into consideration for future projects. All works were completed in a live operational environment.

Global Rail staging program and procurement plan was key to the success of the project.

No reports or incidents were raised by the public or client. Global Rail encountered no Industrial relations during this project.

We offered alternative methodologies to minimize the disruption to current operations, minimized potential for delayed interface by undertaking additional crews to finish the task, more progressive and advanced ways in the process of reporting structures.

Global Rail successfully executed this project exceeding our Clients expectations and will continue to deliver further works in the future.





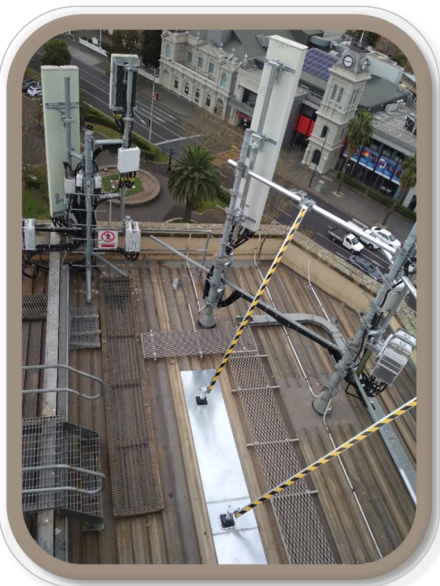
Project Updates

GRA Networks in Australia has begun works after successfully signing a number of framework agreements with Nokia.

The first installation of New 5G Technology has already been completed on behalf of Nokia for the Vodafone Network. This included the RAN upgrade of existing communication sites to support the new 5G technology, with all works conducted under a 7-day SLO (Single Long Outage).

The completed scope included:

- Removal of all old steelwork and installation of new steelwork
- Removal of all old antennae and installation of new antennae
- Removal of all external equipment and installation of new RRU's
- Removal of all old feeders/trunk cables and installation of new trunk cables
- Swapping-out of the existing PSU
- Swapping-out of the existing BTS equipment and replacing with Nokia BTS
- Construction of a new hoarding around the shelter
- Site integration and test calling



GRA Networks scope of Moonee Ponds included:

All works to be conducted under a 8-day SLO (Single Long Outage)

- Traffic management and Crane setup
- Removal of old steelwork and installation of new Steelwork
- Removal of all old antenna and installation of New Antenna
- Removal of all external equipment and installation of New RRUs
- Removal of all old Feeders/Trunks and installation of New Trunk cables
- Swap-out of existing PSU
- Swap-out of Huawei BTS equipment and replacing with Nokia BTS
- Site integration and test calling



Project Updates

GRA Networks have continued to deliver sites for Ericsson, under our Framework agreements signed earlier this year.

Ericsson (Optus) Modernization –

- Project C445.08 Mulgrave AFL Park (M0036)
- Project C445.09 Balaclava (M0230)
- Project C445.10 Richmond North (M0235)
- Project C445.11 Rosanna (M0102)
- Project C445.12 Moonee Ponds Central (M0936) Richmond North
- Project C445.13 Maidstone2 (M2521)



Optus is undertaking a project to upgrade/replace Huawei equipment on existing communication tower and install 5G technology. Builds can vary from monopoles, tower and rooftop site types. Upgrading steelwork, fiber optic cables, new RRUs and passive equipment.

Below are the deliverables:

- Remove other vendors equipment
- New antenna support steelwork
- Install trunk cable and internal DC and patching equipment
- New baseband units for 4G/5G
- New RRUs for both Optus and VHA
- New iDCDP for RRU power
- Power system unit upgrade
- Site integration and test calling

The above works commenced in October 2020 and the average build time was approximately 2 to 3 weeks

A DAY IN THE LIFE OF

In this issue, we meet Declan Dixon, EHS Advisor for Global Rail Services. We find out a bit more about him.....



What project are you working on currently?

The last few months have been very busy as we grapple with the Covid pandemic, while working hard to ensure that we maintain a safe workplace for our employees and contractors.

With changing guidance, we have continuously amended and improved our documentation and forms to remain relevant to the current requirements. We are also preparing for ISO recertification.

Why did you choose this profession?

I previously worked with the Royal National Lifeboat Institution and found that tasks had to be carried out in a safe manner while reacting to an emergency and this was best achieved by increasing awareness and regular practice.

What is your most favourite things about the job?

The look of delight on everyone's face when I attend a site!

Finding that a situation or issue that has been attributed to a certain condition or cause, that after investigation is found to be inaccurate and not related to the root cause.

If you could travel anywhere, where would you go and why?

Canada, I was there many years ago and the wilderness is exactly that wild, I would skip the East coast go to the west to places like Jasper and Banff.

What is your greatest strength or weakness?

They are linked and when you are aware you can work to your strengths, and work well with others around you by recognising their strengths. A great little task is an insight test, this can be helpful in highlighting areas that you must be mindful of while working & dealing with others.

What is your favourite music?

When it comes to music you cannot go wrong with some 90's dance, music that is so bad, it must be good; Snap, Scooter & 2 unlimited! Currently all banned at home.

Also, Fleetwood Mac who I went to see last year in Dublin -Stevie Nicks still has a great voice and when she sang landslide, a song she wrote in her 20's, at 70 years of age it was still so powerful.

Hobbies or special interests?

Following record breaking Gaelic football teams, that win five all- Irelands in a row!

If you won the Lottery what would you do?

Be surprised...as I didn't buy a ticket.

Would you like to learn any new skills?

Currently I am waiting to complete my powerboat instructor training, due to the current covid-19 restrictions this has been rescheduled many times now.

What do you miss during the current Covid restrictions?

I missed the GAA championship during the summer, the trips to matches with family and friends, sitting beside an opposition supporter and telling them sure there is always next year.

The meeting for the post-match review and the discussions over the turning point or chances missed.



WELCOME

We are pleased to announce the appointment of Stephen O'Brien. He will assume a dual role for our operations in Ireland - General Manager of Global Rail Services Limited and Director of Telecoms for GRA Networks, Ireland - with a key mandate to continue our growth plans in Ireland. He will be taking the reins from Tom Staunton, who moves onto pastures new.



Stephen brings three decades of relevant industry experience to his new role. Prior to joining us he was a Director of Morrison Telecom Services in the UK for a number of years and before this was a long-term Director of Obelisk Telecoms, supporting the expansion of an international company engaged in the design, deployment and management of mobile and fixed-line infrastructure rollouts.

Stephen's track record of delivery and his focus on the very highest standards of quality will ensure the company's remain in safe hands and his skill in team building and stakeholder development will ensure that we continue the tradition of putting both our people and our clients' interests at the very top of our priorities.

Ivan Holloway, CEO of our Irish Operations added:

"I am delighted that Stephen has decided to join the Global Infrastructure Group brands in Ireland. As a team, we all look forward to having him on board from January."





Global Rail Services Limited (GRSL) has completed a significant and complex civils project in Co. Lough, on behalf of client ESB Networks. The project was a necessity for the town of Drogheda; supporting power capacity upgrades to enable future development.

In their capacity as PSCS (Project Supervisor Construction Stage) for the project, GRSL supplied a secure yard/compound and were responsible for liaison with ESB, Louth County Council and all affected residents and business owners. Providing a fully managed service including QSE representation for the project duration, the work scope covered the excavation, ducting, backfilling and reinstatement of trenches, including crossing a stream.

Significant amounts of hand excavation assisted by a vacuum excavator – to help protect existing services – was also undertaken - GRSL were responsible for the design and construction of all temporary works. Full Traffic Management was also provided throughout, covering 8 different road opening licences and 21 separate traffic management plans.

Global Rail Services Limited Project Manager, John Casey added:

“Well done to all concerned for a successful project and with special thanks to supply chain partner Córás Pipeline Services.”



Global Rail Services

Unit 516a Grants Rise
Greenogue Business Park
Rathcoole, Co Dublin
D24 FH56
Ireland

+353 (0) 1 458 8540

Global Rail Services has proven experience in delivering some of the most exciting projects across a diverse range of service sectors.

Our in-house capabilities, our scale and our supply chain partnerships have allowed Global Rail Services to deliver complex multi-disciplinary projects that make a positive difference to our clients, across the Irish infrastructure industry that we serve.

Project Updates

Relocation of a workshop, storage and welfare facilities at M3 Parkway Station, Dumboyne

Global Rail Services were commissioned to deliver a project to provide for the relocation of the Connolly West Signalling, Electrical & Telecoms (SE&T) department from their existing compound at Connolly Station.

The M3 Parkway Station was identified for the relocation and involved the remodelling of the existing station building at M3 Parkway into maintenance offices for the SE&T Signalling West Department.

The works constituted the refurbishment of the existing station into offices and the construction of 2 no. new storage facilities, one structural steel and one blockwork.

Works also included the renovation of the existing building, removing the old rooflight off the station and installing a new roof covering. The scope also covered the installation and commissioning of a new electrical installation.

The works have been carried out in a manner to cause minimal impact to the safe working of the area and the public in general and with no interference with the operational railway line. All work has been planned and co-ordinated to cause a minimum disruption to the public as possible for the duration of the works. The site has been fenced off and secured in accordance with both the works and the health and safety requirements.

All deliveries were scheduled, and logistics management provided throughout.

The implementation of traffic management was continually monitored, reviewed and adjusted as works proceeded.



Our Markets

Global Rail Services Ltd is part of the Global Infrastructure Group and is a leading Irish provider of design, construct and commission services for clients across a wide range of engineering and infrastructure sectors





Global
Infrastructure
Group

WINTER WELLBEING

LONELINESS

The coronavirus pandemic has made it difficult to be with others for most of this year. Contact with family and friends continues to be limited, and social and leisure activities are restricted, which can cause feelings of loneliness – particularly as the colder, darker winter months arrive.

It's thought the winter blues, or seasonal affective disorder (SAD), affects around 2 million people in the UK and more than 12 million people across northern Europe.

Key symptoms: depression, sleep problems, lethargy, overeating, irritability, feeling down and unsociable.

It's really important to remember these changes will not be forever.

Global Rail Construction can call our confidential Employee Assistance Programme via Validium on 0800 358 4858.

If you're feeling lonely at the moment, the following tips could help. Different things work for different people, so try to find what suits you, and seek further support if you feel you need it.



- ◇ **Find ways to spend time with people** - meet for a walk or socialise via video
- ◇ **Create a social routine** -. check in on others, catch up with old friends or have group chats
- ◇ **Share your feelings** - Talk to someone you trust (but don't compare with them as we are all different)
- ◇ **Do things you enjoy** - picking back up old hobbies or starting new activities at home.
- ◇ **Focus on something else** - learn a new skill or do an online course
- ◇ **Volunteer** - help other locally through charities and organisations
- ◇ **Look after your body** - eat healthily, stay hydrated and keep warm to protect yourself



WINTER WELLBEING

ALCOHOL – Know Your Limits

For those of you that were working from home or furloughed, you had a lot more time on your hands than usual and as a result, you may have increased the amount you drink at home. With the festive season approaching this is also a time when we tend to drink more than usual - but it's important to remember that, like most things, alcohol should be consumed in moderation.

While alcohol can have a very temporary positive impact on our mood, in the long term it can cause big problems for our mental health. Alcohol can be linked to: Depression, Anxiety, Insomnia, High blood pressure, Obesity, Diabetes, Liver disease and liver cancer, Strokes, Change in moods.

You will also need to be aware of how much you have had to drink before hopping into your car or reporting for work the next day. As we all know, in the Rail Industry we are subject to Random D&A screening but you also need to think about the impact that having alcohol in your system could have when driving your colleagues to work or your family out for the day. As a general guideline it takes approximately, one hour for each unit of alcohol to leave our bloodstream, plus an additional hour for the first drink. So, if you have 3 units of alcohol it is estimated that it be at least 4 hours before the alcohol has left your bloodstream. But it is dependent on the strength of the drink so the safest option is to abstain the night before work.

Travel To & From Work

Global Rail's vision is that everyone arrives for work healthy and leaves for home safely, every day. During the winter months we need to make sure our vehicles are ready for the wet or cold weather and take extra precautions.

These can include checking tyre pressure, tread depth, wipers, windscreen washers, lights and coolant and making sure you have de-icer, scraper and emergency hi-vis clothing in the car.

We need to take more care when driving in winter weather too so drive slowly, keep a safe stopping distance, use low-beam lights and do not use cruise control.

Slips, Trips & Falls

Even in familiar territory it is easy to overlook some of the extra dangers that winter can bring so it is important to be extra cautious to avoid accidents or incidents.

Some tips to stay safe include:

- ◇ Taking extra time
- ◇ Be extra aware of your environment, check for hazards
- ◇ Ensure lighting is suitable for the task
- ◇ Stick to clear walkways
- ◇ Wear appropriate footwear



CONGRATULATIONS...

WELL DONE to Sayad Bakth (GRCL Assistant Accountant) who successfully became a full member of the Association of Accounting Technicians and obtained MAAT status.

Sayad had this to say regarding his achievement, ***“If anything good came out of lockdown it was that I was able to put my head down, study and finally achieve this goal that has been pending for a couple of years now.***

It was challenging to say the least with my two little ones running riot everyday but I am grateful that my hard work has paid off. My experience at GRCL was a big contributor in getting the qualification as they look for practical experience as well as your accounting knowledge. I now feel confident and am proud to be able to call myself a certified Accountant. God willing, I can now progress.”





Abby & Adam Wisker
(GRCL Quantity Surveyor)

welcomed their baby boy to the world on the 16th
October 2020.

Finley George Wisker was born at 4.29am and
weighed 6lb 15oz

All of the family are doing well.

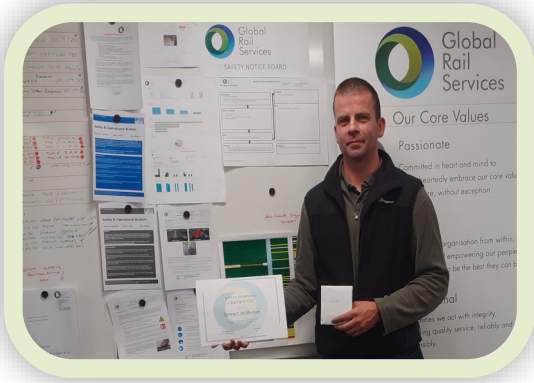


Well done to Jim Cuell (GRCL Commercial Director), Nick Ansell (GRCL Business Development Manager) and Richard Horsted (GRCL Senior Design Manager) who participated in the Herts Young Homeless (HYH) Golf day. An amazing £4,500 was raised on the day to help vulnerable young people.

HYH thanked GRCL for their contribution to the day, ***“We wanted to get in touch to say a huge thank you for joining us and for your most generous support to Herts Young Homeless including your hole sponsorship.***

Thank you for bearing with us through the indecisive weather and the most recent Covid-19 restrictions that we had to follow. We really hope you and your team enjoyed yourselves as much we did and had a great round of golf.”





Stewart McMickin (GRSL Electrician) received the QSE award for **Safety On Site**.

Whilst upgrading the headrail on site at Old Bawn, Stewart noticed a 100amp breaker had some electrical burn damage, Stuart returned to replace the breaker before any serious damage occurred.

The client was Three Ireland, however their site is located on another of our clients (ESBT) property making it an even more dangerous situation



As we adapt to the 'new normal', the education of students is very important. Unfortunately not all are fortunate to have the resources to adapt to this.

Global Rail Construction were made aware of students in this situation at

The Marlborough Science Academy in St Albans so they decided to donate 5 Lenovo chrome books to the school to assist with their learning.

The school were very grateful and relayed their gratitude in a letter stating, ***"I am writing to express a heartfelt thank you for your kindness and generosity in supporting our school with a donation of chrome books. I am enormously grateful to you, your donation means a great deal."***



Alison Cuell (Director of Learning -The Marlborough Science Academy) receiving the chrome books from Marco Lombardelli (GRCL Managing Director)

Thank You To Our 3000 Followers.

We look forward to sharing more exciting news, updates and job opportunities from our worldwide brands in Australia, UK and Ireland.





This year has been a tough one for us all. Whether it be the isolation of lockdown, the uncertainty of furlough, the anxiety of the constant changes in rules or the worry about the health of our loved ones, we've all found ourselves under new pressures. The stress is having a huge impact on everyone's mental health.

According to research carried out by Mind, 60% of adults said their mental health got worse during lockdown. Many have developed new mental health problems as a result of the pandemic and, for some of us, existing mental health problems have gotten worse.

The **Global Infrastructure Group** recognise that mental health has never been more important and for this year's World Mental Health Day have introduced the **Do One Thing campaign**.

The **Do One Thing campaign** is about undertaking one activity, and starting the conversation. Making a positive change can seem difficult, especially during uncertain times.

Sometimes, it can be hard to know where to start.

Some suggestions are:

- Going for a walk
- Learning a new skill
- Doing something creative
- Create a vegetable patch in the garden
- Doing a crossword/ puzzle
- Trying out a new recipe
- Doing an exercise class/ online workout
- Clearing out a cupboard
- Doing something silly with your kids
- Dancing around your lounge to your favourite song
- Taking the first steps to getting support for yourself
- Reaching out to someone else



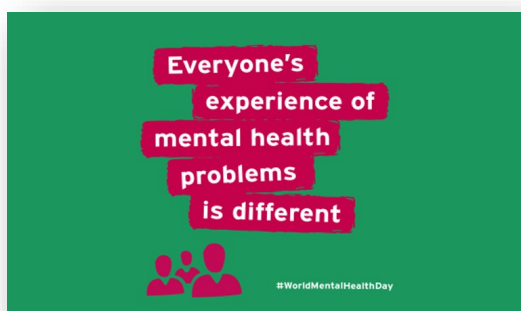
Returning to the 'New Normal'

Lockdown has been difficult for many people. However, whilst we were in full lockdown things might have felt more certain, as the rules were clearer.

Now things might feel less clear, and there may be new challenges.

It is ok to feel anxious about 'new normal' or about returning to some old routines.

There's no 'normal' response to changes to lockdown. Your feelings may be affected by lots of things that are out of your control. Your feelings might change. You might feel one way one day, and another way the next. It might not feel logical but there are a few things you can do to manage these feelings:



- Monitor the latest government guidelines online
- Talk to someone about how you feel
- Choose to control the things you can
- Maintain as much routine as you can
- Find distractions when you feel stressed
- Focus on a positive or a 'win' for the day
- Tell yourself that it is ok to feel the way you do

CONSIDERATE CONTRACTORS

GLOBAL RAIL CONSTRUCTION & ATKINS

Whilst set up on site, some small parcels for Global Rail Construction and our client Atkins Global had been arriving at this woman's address by mistake and she has been bringing them into the site depot. Atkins Global bought the woman flowers and Andy Fingleton (GRCL Supervisor) bought her chocolates to say thank you for the inconvenience.

Atkins Global have just raised a good call for their actions on the project and made the following comment, ***"Thank you to Global Rail Constructions' Andy Fingleton for suggesting that we jointly make the thank you gesture. This puts us in a really good light and Andy and the team demonstrating kindness and gratitude has turned what potentially could have been a nuisance issue into a positive. Hands were washed/sanitised, before and after, by all."***



Very pleased to say that our Global Rail Construction team has raised £144.00 in support of the Macmillan Cancer charity for a recent coffee morning.

A Huge THANK YOU To All Who Contributed



globalnews@grcl.co.uk



SHARE YOUR NEWS

Tell us what's happening or send us your pictures or videos.

Herts Young Homeless (hyh) are one of numerous charities Global Rail Construction continue to support.

Homelessness can be defined as being without permanent, stable or suitable accommodation. Besides rough sleepers, this includes those who are 'sofa surfing' with friends and extended family or living in hostels.

hyh has a variety of **FREE** services open to all 16 – 24 year olds who are homeless or threatened with homelessness. They also have a Health Service which has no upper age limit.

hyh is an independent charity and has been supporting vulnerable people in Hertfordshire since 1998.



The first week in September was The Big Herts Bake where many companies, including Global Rail Construction, participated in raising funds for **hyh**.

Global Rail Construction raised a fantastic £280.60 - a big thank you to all who donated to this worthwhile cause, and congratulations to Nick Turner (Head of E&P) who won our auction of a homemade Black Forest Gateau cake.

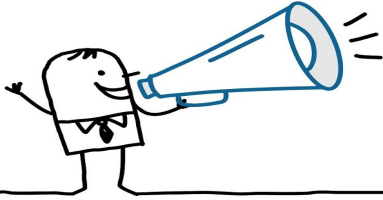
hyh were very grateful for everyone's support, ***“Thank you so much to everyone who got involved. We are so grateful to you all for joining in raising vital funds for our services and have really enjoyed receiving all of the amazing photos of your impressive bakes!”***



SHARE YOUR NEWS

Tell us what's happening or send us your pictures or videos.

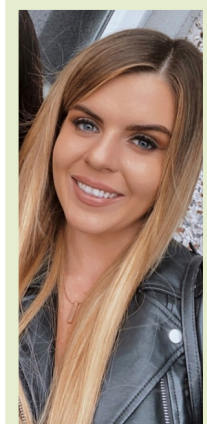
globalnews@grcl.co.uk



Welcome To The Global Family...



Wesley Mackey
Purchasing Officer



Stacey McNamara
Office Administrator



Ponnampalam Linkeshwaran
Head of Design & Engineering



Martin Dalzell
Graduate Design Engineer



Martin Jose
CAD Technician



Annalise Lombardelli
Office Administrator



Soumyadip Sarkar
Senior Design Engineer



Pola Marti
CAD Technician



Steve Sole
MEP Project Manager

The **Global Rail Construction Limited (GRCL)** team replaced their usual Christmas evening out with a **Festive Fun Day** for 2020, at their Hatfield HQ.

The team really got into the spirit of Christmas, sporting fancy dress and wearing Christmas jumpers, whilst participating in a number of activities throughout the day including an Online Quiz, Bingo and a game of Heads and Tails – all in support of GRCL’s local charity partner **Herts Young Homeless (HyH)** - raising £565 in the process.

GRCL have undertaken a number of events in the last couple of years to support HyH, together with a separate annual donation that is made by the Directors as part of a ‘pound for close call’ matching process.

Thanks to everybody for a fun filled day and for your kind generosity.

Herts Young Homeless is an independent charity that has been supporting vulnerable people in Hertfordshire since 1998. They work closely with Herts County Council, local district councils and other agencies to improve local provision and prevent youth homelessness.



* Social distancing was adhered too and face masks removed for photos only *

Merry Christmas

Global Infrastructure Group sends all of its customers, partners and staff the compliments of the season and our very best wishes for the New Year.



Global Rail Construction



Global Rail Services



Global Rail Australia



GRA Networks



Passionate

Committed in heart and mind to whole-heartedly embrace our core values and culture, without exception.



People

Growing our organisation from within, promoting and empowering our people, inspiring them to be the best they can be.



Professional

At all times we act with integrity, providing quality service, reliably and responsibly.



Teamwork

Working collaboratively whilst supporting and respecting each other's views.



Responsible

To consistently deliver quality, on time, safely and to budget whilst protecting our communities and the environment.



SHARE YOUR NEWS

Tell us what's happening or send us your pictures or videos.

globalnews@grcl.co.uk



Global
Infrastructure
Group

A Leading Provider Of Turnkey Solutions
For The Rail Industry



Railway
Construction



Civil
Engineering



Telecomms



Multi-Utilities



Power
Networks



General
Construction



Design and
Consultancy

Combining technical and innovative excellence with a
real passion for detail and safe delivery of projects

www.theglobalinfrastructuregroup.com