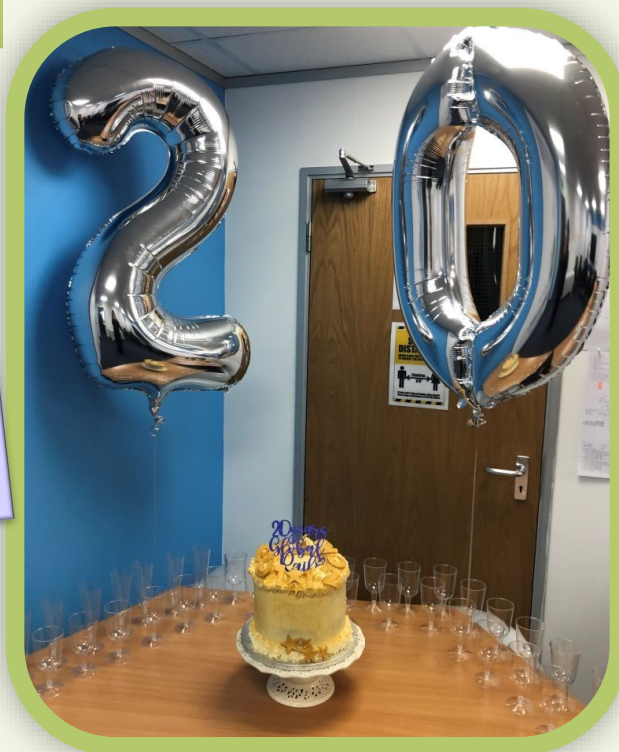




Global  
Infrastructure  
Group

Issue 28 2021

# Happy Anniversary



## Foreword

**Welcome** to the Global News Magazine we have a really stimulating mix of articles that will shine a light on our Australian, UK and Irish operations.



In this edition we are proud to celebrate 20 years of business in the UK & Ireland, an important milestone in a growing business that started from humble beginnings. As we look forward to an exciting future in our industry, our 20 year anniversary reminds us to contemplate the past, our highs and lows and what has made us so successful over that time. Without a shadow of doubt, at the top of that list is you, our trusted and invaluable member of staff.

On swapping stories this week at our office celebrations, we get a sense of how far we have come in the past 20 years. Under the watchful eye of our founders Ivan and Marco, we have increased to c500 staff across three countries and more importantly grown as individuals by always being passionate at what we do as professionals and as a team.

We also celebrate some of our 'veterans' who received their 10 & 20 Year service awards. They are the nucleus around which great teams are formed. We thank them for their loyalty, hard work, passion and professionalism as echoed by the constant positive feedback from our clients.

In the UK, Global Rail Construction has successfully retained our ISO45001:2018 Occupational Health & Safety accreditation. This underpins and promotes a healthy working environment which is critical for individual wellbeing and overall company success. We have also secured contracts with West Midlands Trains for the depot upgrade at Soho as well as a contract with Barhale for the Finsbury Park Access for All Project. The Feltham and Wokingham Resignalling phase 3/4 project is continuing well where GRCL are principle contractor for the design and build of the works. As part of this scheme, we have also been working on the Wokingham PSP site, and this is now ready to be handed over for the next phase of commissioning. Under phase 2 of the Feltham Resignalling Project, the Sunningdale Level Crossing has now been awarded as a multi-disciplinary contract on behalf of Atkins for the civil and S&T works.

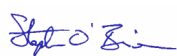
In Australia, our team have completed a number of excellent site-builds for Optus / Ericsson as part of the 5G Upgrade and site Modernisation Program. Tricky site builds, such as Malvern West on the corner of a busy metro area with constant liaison between Council, Power Authority and local traffic management. Other noteworthy sites were Parkville, Hawthorn Railway Station, Swan St East and Pakenham East that showcased the strong capability of our Australian telecoms team. We also won 109 sites as part of the Melbourne swap program, as Siemens BTS kit is replaced with Nokia hardware. As we constantly expand our multi-disciplined approach within the Australian business, our Global Rail Australia Track Division were awarded turnouts and track install from our valued client Tasrail in Tasmania.

In Ireland, we have safely and successfully completed a number of large projects as well as delivering our ongoing civils and electrical service framework contracts for Irish Rail, one of our most important clients. The Connolly Decommission and Maintenance Works project, which involved refurbishment and improvement of Signal Location sites and Ticket Validation machines was completed on time and within budget to the satisfaction of Irish Rail S.E.T. management. A new Signalling and Generator Room building project underway at Geashill to house switchgear panels and back-up generator is almost complete. The Geashill project has had specific challenges that our experienced staff have carried off with aplomb, issues such as shared access liaison and contaminated ground to name but a few.

The Irish Rail GSMR 3A package is firing on all cylinders as we have now safely completed 7No sites to-date. Trackside piled foundations ready for 30m tower installs complete with chambers, ducting at difficult site locations have received warm reviews from Irish Rail for our excellent workmanship and management.

At GRA-Networks in Ireland, we have continued on-going success with our Three Ireland 5G rollout on difficult roof top design and build projects, such as Newbridge Shopping Centre highlighted in this issue. Other clients such as Imagine Networks, ESB Telecom, Irish Aviation Authority and the Irish Rail maintenance framework contract continue to issue a constant stream of valuable projects on foot of the excellent professional work completed by our telecoms team. As we look back over 20 years of hard work and dedication from our teams and warmly celebrate our 'veterans' who received their 20 year service awards this week, I am truly encouraged and excited by the prospect of the next 20 years. On behalf of our senior management team in Australia, UK and Ireland I would like to "**Thank You**" for your superb effort every day, it makes a difference and makes this a great company to work for.

Kind regards



**Stephen O'Brien**  
General Manager  
Global Rail Services



#### **Passionate**

Committed in heart and mind to whole-heartedly embrace our core values and culture, without exception.



#### **People**

Growing our organisation from within, promoting and empowering our people, inspiring them to be the best they can be.



#### **Professional**

At all times we act with integrity, providing quality service, reliably and responsibly.



#### **Teamwork**

Working collaboratively whilst supporting and respecting each other's views.



#### **Responsible**

To consistently deliver quality, on time, safely and to budget whilst protecting our communities and the environment.

## **Mission & Vision**

**Using the best mix of technology and tradition,  
The Global Infrastructure Group empowers its workforce to deliver to  
our clients the best possible standards of workmanship within the rail  
industry at a competitive price.**





# Happy Anniversary



Our Global Rail Construction Limited (UK), Global Rail Services and GRA Networks (Ireland) family celebrated 20 years of business on the 17th August 2021. From small beginnings established two decades ago, we are a recognised UK rail contractor of choice and our Irish operation is now recognised as a Rail and Telecoms Contractor of choice by clients and strategic partners alike.

Leadership is the core of what we do, with founding Directors and Owners Marco Lombardelli and Ivan Holloway, still actively involved in supporting and developing the companies. Innovation is part of our story - advising our clients - we have always applied value-adding ideas combined with up-to-date operational methodologies. Our teams have worked consistently this whole time to achieve our fundamental goal – becoming the standard of excellence in the market.

20 years has been a time of intense professional activity, positive initiatives and exciting projects, all of which have been accomplished together with our highly-valued former and current team. Our UK and Irish business's are now part of the Global Infrastructure Group (GIG) of brands which is also based in Australia. The GIG group employs around 500 enthusiastic and experienced construction professionals worldwide.

Marco Lombardelli and Ivan Holloway added:

***"We are very proud of our achievements, which have been full of professionalism, innovative ideas and determination to make them work. We truly appreciate the loyalty of our personnel; some of those colleagues whose professional activity lasts well over a decade. We would like to thank all our teams who continue to work as one and put their best effort in making us a reliable, trusted and recognised rail contractor."***

***"Our success depends on clients' success. Thus, we hope that our work and insight has contributed to their success and building a sustainable society as well."***

***"We would like to take this opportunity to thank all our clients and strategic partners over the past 20 years. We look forward to many more successful years and the next chapter in our history."***







Global  
Rail  
Construction



Global  
Rail  
Services

Global Rail Services







# Happy Anniversary



As well as celebrating 20 years in business, our Global Rail Services and Global Rail Construction teams also celebrated 20 years of dedicated service from nine valued members of their staff—see picture below.

***“Thanks to all of you for your support.  
We couldn't have achieved our success without you”***



**GRSL Left to right -  
Liam Lawlor, Michael Morgan,  
Dermot O'Brien & Eoin Short.**



**GRCL Left to right -  
Andy Fingleton, Sean Maher, Terry Burrows, Una Tearle & Robbie Cousins**





We are pleased that following a successful audit, we have been recertificated for ISO 45001: 2018.

Due to the coronavirus pandemic, the audit was converted into a remote audit, which went well and could also be recommended for future audits. The audit also covered our Principal Contractor SSIP assessment.

Thank you to our Auditors for their cooperation and our Compliance team for their support during the audit.

An Occupational Health & Safety (OHS) Management System promotes a healthy working environment by providing a framework to identify, control and manage OHS risks and opportunities.

Adopting and implementing an effective OHS Management System addresses legal, ethical, and industrial relations concerns regarding worker safety and our duty of care as an employer. Implementing an OHS Management System reduces workplace injuries and minimises the associated costs. ISO 45001:2018 also shares common management systems principles with our other accreditations and systems covering ISO 14001 for Environmental Management and ISO 9001 for Quality Management.



## A Warm GRCL Family Welcome to Kevin Wilson

Global Rail Construction Limited (GRCL) – is pleased to announce that Kevin Wilson will be joining its rail project operations.

Kevin joins the GRCL business as a Project Manager and will be responsible for overseeing several large, multi-disciplinary rail projects.

With over two decades of experience delivering high profile rail projects across Signalling, E&P and civil, Kevin has been responsible for delivery of individual commissioning's, complex programmes, and contract management in terms of quality, programme, resourcing, change, safety, and functionality. Kevin is an excellent addition to the UK team in Hatfield, as the business continues to develop its rail capabilities and service offering.

Everyone at GRCL is really looking forward to working with Kevin and supporting him in his new role.



**The Global Infrastructure Group of companies, which have been established since 2001, incorporates – Global Rail Construction Ltd, Global Rail Services Ltd, Global Rail Australia Pty Ltd and GRA Networks a subsidiary operating in both Ireland and Australia.**

***“Our USP is without doubt our people and our long-term strategy will ensure we continue to invest in and develop our people to enable us to deliver our customers expectations, in an efficient and consistent manner”.***



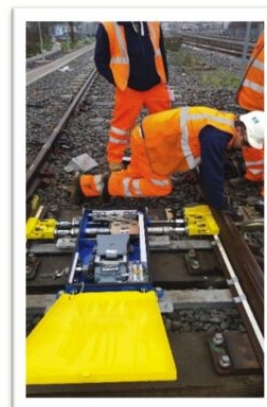


**Global Rail Construction Limited** (GRCL) has secured a contract to act as Principal Contractor (PC) and deliver the design and build civils element covering the upgrade of 17 hand operated points to motorised points at Soho Depot on behalf of West Midlands Trains (WMT). The proposed point machines within the depot will be of a four-foot mounted trailable type or, where necessary, due to installation constraints (SD16), six-foot mounted trailable type. The Tie-FenLock 400 option has been chosen by WMT, which is the most comprehensive of the Tie-FenLock systems, consisting of a full SIL 2 safety CBI interlocking system with SIL 4 axle counter train detection, SIL 4 trailable point machines and Ground Position Light Signal (GPLS). The system can be interfaced with any other mainline interlocking used in the UK and has the benefit that a single operator can manage and operate all train movement equipment within the depot control area.

GRCL's delivery scope as PC includes:

- \* 24No Axle counter on Points Roller (no design)
- \* 15No LED Ground Position Light Signal on cast insitu concrete base (inc design)
- \* 15No Disbox Concrete stand (no design)
- \* 1No Points Crank Handle cupboard concrete base (inc design)
- \* 1350m Cable troughing (inc design)
- \* 15No Hollow bearers
- \* 2No Stop Board Base
- \* 1No PRI Base

GRCL will be managing the contract as principal contractor and principal designer, providing all welfare under the requirements of CDM 2015 and will be working with WMT nominated signalling sub-contractor Fenix Signalling Limited.





**Global Rail Construction** team has been awarded a sub-contract on behalf of Barhale for the Finsbury Park Access for All Project (AFA). The contract will see GRCL support as the MEP and Building Services partner for the project.

This Finsbury Park project is part of an ongoing commitment by the Department for Transport (DfT) for the provision of an accessible route at railway stations throughout the UK rail network. This work is primarily driven by the Equality Act 2010 statutory legislation for Network Rail controlled infrastructure to deliver unobstructed 'accessible routes' from at least one station entrance and all drop-off points associated with that entrance, to each platform and between platforms served by passenger trains, thereby complying with the Equality Act 2010.

GRCL's scope of works includes:

- \* Canopy Works
- \* Platform Duct and Drainage Works
- \* Re-Tiling Existing Building 3/4B
- \* Building Works including excavation, concreting and brickwork
- \* Re-surfacing Works
- \* M&E including lighting and power works to Platform 7/8 and 3/4 and Platform Stairs 7/8 and 3/4, Passageway 4, Adits and LMR Rooms 3/4 and 7/8







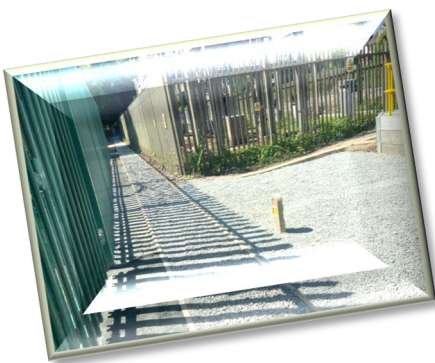
Global  
Rail  
Construction



As Principal Contractor, **Global Rail Construction Limited** (GRCL) has undertaken the final touches at its Wokingham PSP site on behalf of Network Rail as part of its Feltham Resignalling Phases 3-4 project. The team faced numerous challenges at this complex site, however, these have been successfully solved through meticulous planning and first class delivery. GRCL are now handing the site over to allow the next phase of the commissioning to take place.

**Thank You**

**James Sykes (GRCL Project Manager), Ashley Phillips (GRCL Supervisor)**  
&  
**All The Team**







## Sunningdale Level Crossing Renewal Contract Award

**Global Rail Construction Limited** (GRCL) has been awarded a multi-disciplinary contract on behalf of Atkins for the civil and S&T installation works for a new level crossing at Sunningdale, which falls within Feltham Resignalling Phase 2.

The overall Feltham Resignalling Project covers the renewal of all signalling assets. Its area is covered by seven scheme plans, with delivery broken down into six separate phases that align approximately to the Signalling Scheme Plan boundaries, Feltham ASC Signallers Panels and Wokingham Signal Box.

Within the early advanced scope of Phase 2 is Sunningdale MCB-CCTV, which is subject to a full level crossing renewal and is due to be completed in early November 2021. The scope encompasses life extension works with addition of barrier repositioning and narrowing of carriageway.

GRCL's awarded summary of works for this level crossing renewal includes the full civil engineering scope and trackside signalling equipment installation works, which will be delivered in-house and covers the following:

- Barrier and Red Man Standing Signal Bases and associated route/cable entries
- Marshalling Box bases and associated route/cable entries
- Earth Mat installation
- Turning Chamber
- Highway Works – Carriageway, Footway & Footpath Works
- RTL bases with NAL sockets and associated route/cable entries
- Installation of route/cable entries
- Existing Barrier Base modifications
- Lighting Control Unit Bases
- Hardstanding Areas
- Removal of existing fencing/gates
- Installation of new fencing/gates
- Sign Bases

GRCL will deliver and construct these works, where possible, in fenced or Site Warden protected areas. However, there will be requirements for certain areas to be constructed during possessions/line blocks. This level crossing renewal involves several stakeholders including Atkins, Network Rail and other contracted parties.

GRCL will look to work collaboratively with all concerned and use all reasonable endeavours to coordinate and make necessary allowance for working alongside others to deliver this level crossing renewal in accordance with the overall project programme.



### **Global Rail Construction Ltd**

is a Principal Contractor and a leading UK provider of design and build services to clients in the rail and transportation sector

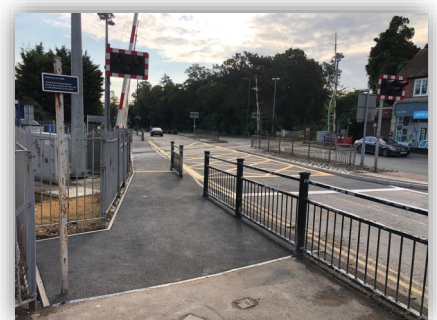
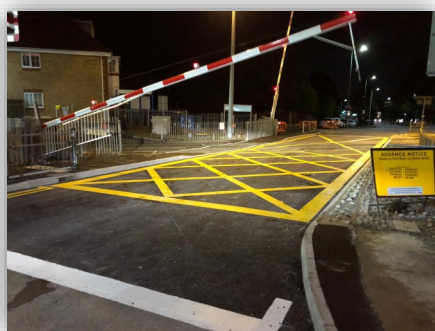
## GREAT WORK FROM THIS TEAM

Whilst delivering their Feltham Resignalling Phases 3&4 project

### **Global Rail Construction Limited**

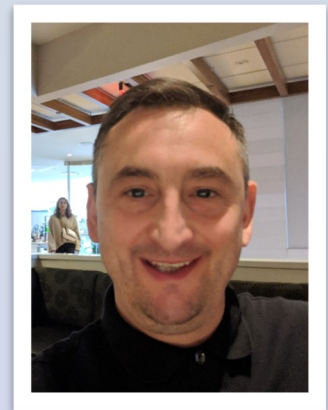
has successfully completed the first half of their Sunningdale Level Crossing upgrade. This included installation of a new barrier base foundation, realignment of footpaths/island and kerb lines throughout, installation of bollards and pedestrian guard rails and removal/installation of surfacing, including relining of the crossing and extending the anti-trespass surface in the central reservation.

All works were undertaken without incident, which is credit to the team involved who have made this project to date such a huge success



# A DAY IN THE LIFE OF .....

In this issue, we meet Martin Rollins, Health, Safety and Environmental Advisor for Global Rail Construction. We find out a bit more about him.....



**Current job title?**

Health, Safety and Environmental Advisor

**What project are you working on currently?**

Feltham and Wokingham Re-signalling

**What is your most favourite thing about the job?**

The top-down approach and support to HSQE matters.

**What advice would you give to anyone considering this profession?**

There will always be something new to learn so don't be afraid to use the knowledge of those around you and ask for help when you need it.

**What do you feel most proud of?**

Being a father to my 10-year-old son.

**If you could travel anywhere, where would you go and why?**

I'd love to take my son on a tour of the United States as I know it's his dream destination

**How do you spend your free time?**

Normally doing something history based with my son as it's our joint passion.

**What is your favourite sport?**

Boxing / MMA

**If you won the lottery what would you do?**

Look after the people closest to me.







Global  
Rail  
Australia

## Project Updates

### The Optus/ Ericsson 5G Upgrade & Site Modernisation

The Team completed **C445.24 M0958 Malvern West** site this quarter.

Works included the following:

- Replace existing steelwork frame
- Installation of new trunk cables
- New Antenna's & RRU's for VHA and Optus
- Power system upgrade
- Site integration and test calling

The team were extremely busy completing the upgrade of the first eJV site at Malvern West. This site is at the corner of a busy metro area, where we had to work with various stakeholders including the Council, Tram Company, Power Authority, Crane Operator, Welder and Traffic Management.

The morning started with a pre-start meeting with all stakeholders to ensure everyone was working safely.



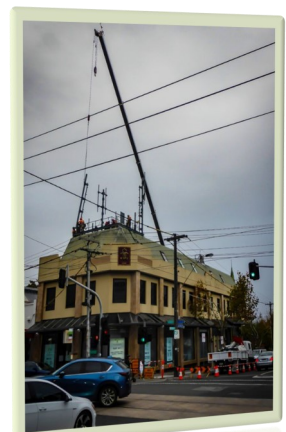
**Team Meeting Led By Lead Rigger, Anthony Morrison**



**GRA Team Replacing A Headframe For 5G Rollout at Malvern West**



**Site Completed Within Timeframe & Zero Defects**



**Crane Lift While Managing Traffic & Power Lines**

**THANK YOU TEAM**

## Project Updates



Site Located 15m From  
Rail Tracks

### C445.35 M0268 Parkville

Deliverables as follows:

- Replace existing pole mounts
- Installation of new trunk cables
- New Antenna's & RRU's for Optus
- Power system upgrade
- Site integration and test calling



### C445.36 M7936 Hawthorn Railway Station

Deliverables as follows:

- Replace existing steelwork frame
- Installation of new trunk cables
- New Antenna's & RRU's for VHA and Optus
- Power system upgrade
- Site integration and test calling



View From The Rooftop Of Site  
At C445.36 M7936  
Hawthorn Railway Station



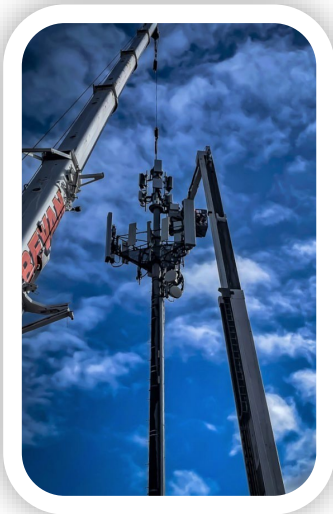


## Project Updates

### C445.38 M0614 Swan St East

**Global Rail Australia** (GRA) delivered the following works safely, on time and within budget:

- Installation of new 5G antenna headframe
- Installation of new trunk cables and feeders
- New Antenna's & RRU's for VHA and Optus
- Power system upgrade
- Site integration and test calling



**New Headframe Lift at C445.38 M0614 Swan St East on a cold winter morning in Melbourne.**

### C445.32 M8284 Pakenham East

On this project the following works were included:

- Replacing existing steelwork
- Installation of new trunk cables
- New Antenna's & RRU's for VHA and Optus
- Power system upgrade
- Site integration and test calling



**Peregrine Falcon bird nest found on the mobile tower at C445.32 M8284 Pakenham East. This job had to be put on hold and Wildlife Authority involved with correct permits and approvals to relocate the nest. This site upgrade has been rescheduled.**

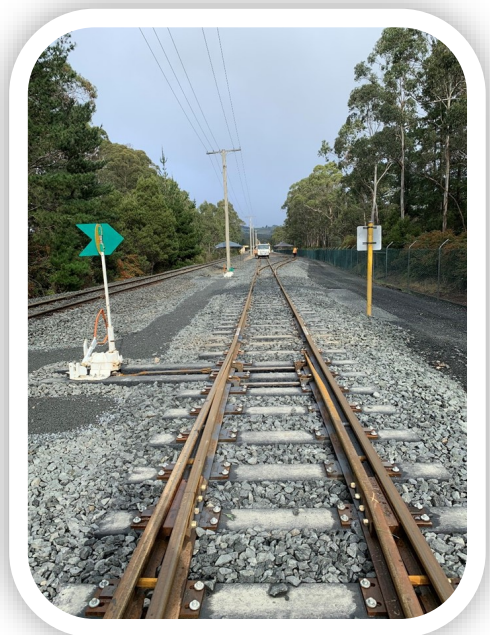
### C483 – Install Turnouts Railton

In July 2021, Global Rail Australia (GRA) Track Division were awarded 2 x turnouts and 200 meters of track to install for our partner Gradco and client Tasrail in Tasmania.

GRA pre- built the 2 turnouts in 4 days prior to the 3 day occupation.

During the occupation Gradco carried out all formation works ready for the install of the points and track.

GRA installed all the new points, track and new racor lever boxes ahead of time in the occupation. Our weld teams completed 45 welds and they all passed NDT inspection.





## Melbourne PTV RAN Refresh – Build Services

SMR work to swap out old “end of life” Siemens BTS hardware and install the new Nokia Flexiedge BTS hardware within a new Eltek BTS on the MTM/Public Transport Victoria network.

- 109 sites are in the program which will run over the next 8 months.
- The cutovers are limited to a 2hr window either within ALBF or Occupation of the line.
- Site Make Ready Works (installation of New BTS and equipment)
- Installation and Commissioning
- Integration and Activation
- Decommissioning of legacy equipment
- Site acceptance



**Who we are**

Global Rail Australia Pty Ltd is part of the Global Infrastructure Group and is a leading Australian provider of design, construct and commission services for clients across a wide range of engineering and infrastructure industries



Civil Engineering



Building



M&E



Track Construction



Train Support

## Connolly Decommissioning & Maintenance Works

This project involved the completion and maintenance of a number of site locations between Connolly and Lansdowne Road where signal location sites required improvement after ticket validation machines had recently been removed. The grounds required reinstating and removal of safety hazards along the permanent way such as the removal of legacy signal gantry's that were failing and infill with blockwork.

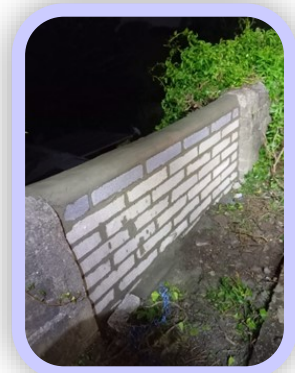
All works were completed working hand in hand with Irish Rail SET management, under lookout protection.

Irish Rail assisted in the procurement and delivery of materials to location site under nighttime possession and GRS provided skilled workforce during daytime working hours under look out protection to remove vegetation along one of the bussies stretches of track entering Connolly station and the installation of GRP flooring.

The recently removed TVM on Platform 4 in Connolly station required the removal of foundations and the reinstatement of cobble sets to match in with the existing platforms.

The removal of the structural steel access gantry platform works had to be carried out over a Saturday night possession during which the steel was removed and reinstated with a block wall and mortar capping.

All works have now been completed to the satisfaction of Irish Rail.





## Project Updates

### Equipment Building & Generator Room at Geashill

The purpose of this project is to construct a new Signalling and Generator Room Building which will house a backup generator and all the relevant switchgear panels and transformers that are required for Geashill and surrounding areas signalling equipment.

This site is located at the old railway station at Geashill, County Offaly.

To facilitate the replacement of the current relay interlocking system in Geashill with a solid-state interlocking signalling control system (SSI), the generator will have an automated controlled switchover so that in the event of an ESB power failure essential signalling will still be able to function.

The Employers Representative is Mr. Timmy Ryan, S.E.T Implementation Manager, Iarnród SET Track and Signal HQ Inchicore Dublin.

The works are expected to be completed over a six-month period which commenced April 2021 and are currently well underway with all works being completed in house led by Dan Sweeney (GRSL Supervisor) and civils team. The work is being completed with shared access with the SET teams who are completing signal upgrades in the area.

All works are being carried out adjacent to the existing railway station which is now family-owned land requiring constant liaison through a shared access route, monitoring of existing structures and lands.

The works involve:

- Site clearance of decommissioned sleepers and contaminated grounds
- Level site and create enough space to complete the works
- Installation of ducting RC foundations and block work walls with a pebble dashed finish.
- Install precast roof for the generator room as the generator will be installed first and the building constructed around it. The SSI building will have an in-situ RC roof.
- Installation of security doors, waterproof roofing system, gutter and drainage.
- Installation of all lighting power and electrical commissioning works.
- Upon completion, surrounding grounds will be fenced and the access road tarmacked.





## GSMR Civils Works—Dublin to Cork Line

GSMR 3A Package 2 (Cork Line) is progressing well, seven sites have been completed to date.

The project teams have a busy couple of months ahead of them with following activities due to take place under T111 Possessions.

- Final two sites to pile using 350mm SFA
- Start of trackside chambers and fibre ducting and jointing
- Completion of UTX across double track on 120 mph line.
- Installation of 5 no. 30m Towers.

**Thank You Team  
For The Excellent Workmanship & Safety  
of Completing These Sites**



## Limerick Junction 30M Lighting Tower Installation

Irish Rail appointed Global Rail Services as Project Supervisor Construction Stage (PSCS) with design co-ordination responsibilities to install 3 number 30m lighting towers, head frame lights and associated ducting and mini pillars to support the installation.

The works involved the construction of 4.5m x 4.5m x 2.4m deep reinforced concrete foundations with 1.2m long cast in situ holding down bolt arrangement. Each lighting column had 18 number 32mm diameter threaded bars supported in a template that needed to be positioned perfectly for the installation of the lighting columns.

The provision of 400m of connecting duct works, pre-cast JB4 Chambers, mini pillars and road crossings. The supply and installation of the 30m lighting columns to provide new lighting masts and install new lighting/luminaires for the railway depot in Limerick Junction.

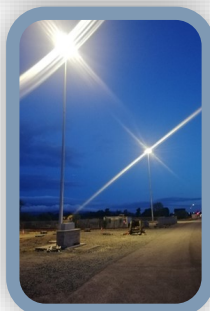
The project was a turnkey solution from start to finish involving all elements of the Global Rail Services teams. The Civils teams, led by John Casey (GRS Supervisor), carried out the installation of foundations, and the electrical team, led by Donal Kelly (GRS Supervisor), installed and commissioned the power and lighting for the project.

The area of works is in Limerick Junction Train Station Depot, the site is located adjacent to existing railway lines and is accessed via an existing entrance on the N24, on the Tipperary town side of railway overbridge. Most of the works were completed under T4 possessions inside the depot and the final installation of the lighting towers, lighting heads and luminaires were installed during a T3 absolute possession.

All three towers were successfully erected in one night with the support of O'Carroll Crane Hire; many thanks to Maurice O'Carroll who installed the lighting towers.

The work site was maintained secure, self-contained and had minimal impact to infrastructure, station staff or passengers. The work site is adjacent to a construction site and live working railway therefore deliveries had to be coordinated to ensure the site entrance was always maintained clear.

With the new and improved depot lighting both safety and efficiency have been increased. Limerick Junction Yard provides the infrastructure with facilities for material storage, engineering train maintenance and engineering train stabling.

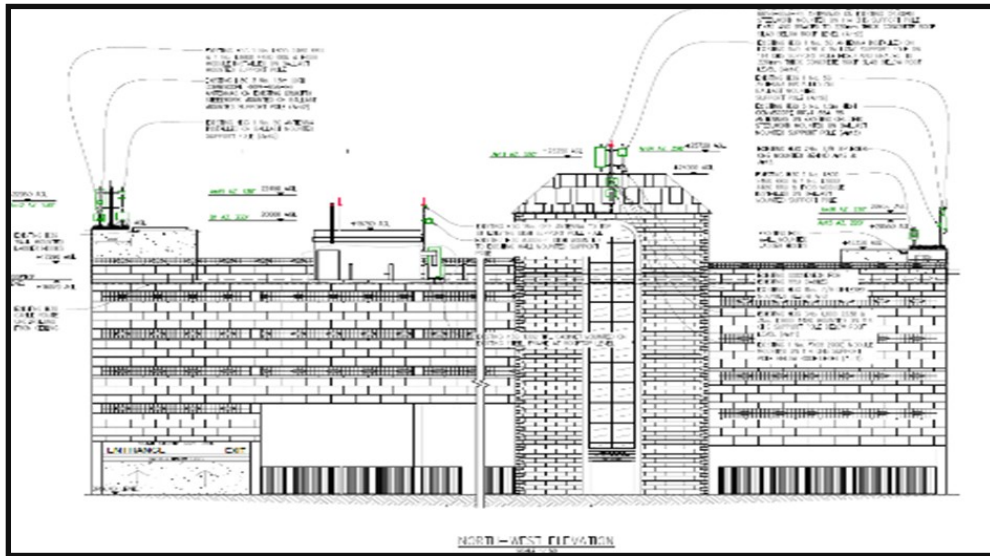




## Three: Newbridge Carpark 3 Sector 5G Build

The scope of this project was to design and build a new 3 sector 5G site on the rooftop of the TK Max building in Newbridge Town Centre. The build consisted of 3 separate antenna locations spread across the rooftop and cabled back to a central cabinet location.

**Newbridge  
Carpark Rooftop  
Design**



On two of the sectors, the antenna array and radio units were installed on a roof mounted steel structure or ballast, which allowed the equipment to be free standing without the requirement for permanent fixing to the building.



The third sector was more difficult to install as the antenna support steelwork had to be integrated into the buildings fabric. The roof also had to be modified to allow for access from the lift room to the roof area via a new ladder with access hatch. All three roof areas had to be fitted with safety anchor points and latchways which allowed our Rigging Teams to access each roof safely and securely.

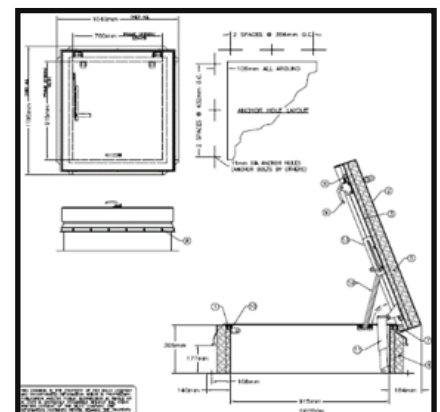


**South Elevation –  
Street View and Rooftop**



**Connectivity**

In order to provide connectivity to each antenna array over 200m of cable tray and earth tape was installed on the ceiling of the floor below. Holes had to be drilled in the concrete mass to facilitate the transition of the numerous fibre cables between the arrays and the base station cabinet. New active equipment and DC power headrail was installed and commissioned within the cabinet.



**Hatch Mechanism**

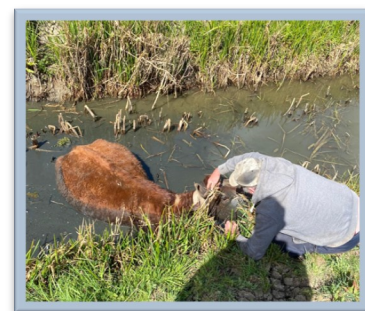
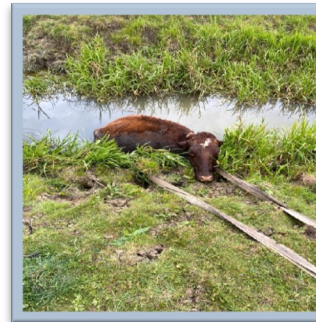
# Good Call

Whilst trying to find the access at the Peterborough site Robert Doboos (GRCL Operative) discovered a cow which had become trapped in a deep dyke.

Brian Richards (GRCL Operative) managed to contact the farmer and make him aware of the situation.

Joe Donaghey (GRCL Operative) assisted the farmer in rescuing the cow whilst Brian and Robert continued to survey the site.

The farmer admitted that the cow must have been stuck in the dyke for over 16 hours and would not have lasted much longer.



## THANK YOU TEAM



A good call was raised at our Sunningdale LX site when a member of the public got trapped between a barrier.

Whilst carrying out our planned afternoon works on the Sunningdale LX site in the YO corner (southbound carriageway) the GRCL site team noticed a member of public was caught between the crossing barriers on the opposite carriageway (northbound) as they dropped to signal a train approaching. The member of public began to panic as they realised they may be in harms way and didn't know what to do.

The GRCL site team, based in the YO corner, shouted across to the person initially telling them to get back. Reacting quickly, Sean Maher (GRCL Operative) & Gary Randall (GRCL Operative) approached and calmed the person down, reassuring them not to panic and guided them back towards the barrier and away from the open line. When safe to do so the person was guided around the barrier and into safety on the pavement approaching the barrier.

**THANK YOU  
Everyone  
For Acting Swiftly In Helping  
This Person In Distress**



# SAFETY STAND/DOWN

## \* Thank You All For Your Time In Attending This Important Event \*

Our Feltham and Wokingham Resignalling Project (FWRP) held its third safety stand down of the year on the 30th July 2021.

The stand down was delivered by Ben Porter (GRCL Senior Project Manager) and Maria Jarosz (NWR Southern Capital Delivery Principal Environmental & Social Value Manager). The session discussed specific subjects which included managing site safety during the school holidays and 'Who am I' from Ben and Maria respectively.

As part of Global Rail Construction's behavioural safety management system, the Feltham and Wokingham Resignalling Project, as with any other project within the business, is required to interact with the workforce and the supply chain in the delivery of the works.

While many arrangements are currently in place to ensure this interaction, safety stand down is considered as another forum to encourage workers and our supply chain partners to discuss key topics of interest to the project.

Once again, due to ongoing COVID-19 Pandemic and in line with GRCL's management of the pandemic, numbers had to be restricted so we could adhere to the 2 metre social distance rule.

The meeting was attended by participants, made up of subcontractor teams working with the project and other supplier representatives. It was a very interactive forum as people were very passionate about the topics covered.

The FWRP safety stand down will be held the last Friday of each month. For any information about GRCL's safety stand down please do not hesitate to contact Una Tearle (GRCL Administrator) [una.tearle@grcl.co.uk](mailto:una.tearle@grcl.co.uk) or Henry Bonuah (GRCL Health, Safety and Environmental Manager) [henry.bonuah@grcl.co.uk](mailto:henry.bonuah@grcl.co.uk)



Our vision is that everyone arrives for work healthy and leaves for home safely, everyday.

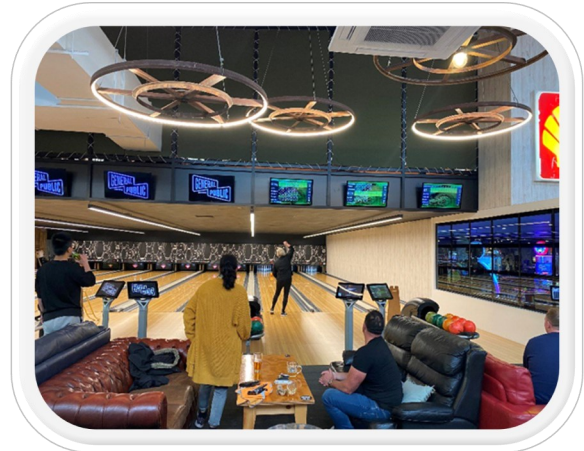


## BOWLING OUTING....

The **Global Rail Australia** (GRA) Team gathered in May, after the COVID lockdown, for an office outing at one of the local bowling alleys.

Fun, food and drinks were had by all and it was great to spend quality time together out of the office environment.

Fair to say, some very impressive bowling skills were witnessed.....



## INTERNS....

Annually, and on a need's basis, GRA actively engage in partnering with local and national Graduate Agencies to employ interns to help mentor and develop local talent as well as generate relevant experience for interns.

GRA highly regards its internship programme with many successful candidates advancing further with GRA directly after their internship and onto other successful career opportunities.

Over recent months GRA has welcomed interns to the Telecommunications and Civils department to help enhance experience for interns and assist with upcoming department projects. Fortunately, GRA have been lucky enough to bring onboard two great interns who have been working closely with their relevant departments in assisting in tasks with active projects.

GRA warmly welcomed Nayan Borse (Telco Intern) & Jamal Mohammed (Civil Intern) to the GIG family and celebrated with a welcome lunch with the GRA team.



## TAKE—AWAY LUNCH....

All GRA departments have been keeping busy with active projects and rarely do we have a full house of staff in the office. On Friday the 30th of July we had a full house and GRA put on a **Friday Take-Away Lunch** initiative where the office provided lunch for the team.

It was great to have the team come together and enjoy a catchup over lunch with all departments, especially with the recent new starters.

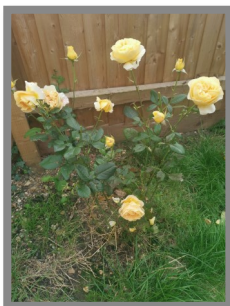




After hearing about the isolation experienced by some of **Herts Young Homeless (hyh)** people during the pandemic, GRCL organised a great day out for the hyh 'Live Life' members on the Nene Valley Railway. Fifteen young people and their families attended the day along with some hyh staff and volunteers.

**hyh** were very grateful, ***"We want to say a HUGE thank you to Global Rail Construction who are one of our fantastic corporate supporters. The team at Global Rail have supported us in so many ways over the last few years: from fundraising, to sponsoring events, attending our hyh events and creating awareness for our campaigns. A special summer's day out is something our service users could not afford to treat themselves to, so it's really much appreciated. A young mum said "thank you so much for today, it was the best day ever, we're still talking about it now and the girls are in their bedroom playing trains and repeating everything they heard today".***

## **We Can Prevent Homelessness Together**



On the 19th August 2015, Terry Cambridge (GRCL Supervisor) passed away and in memory of Terry, his children recently planted a beautiful rose bush called the 'Global Beauty'. Terry's children choose this flower as the name reminded them of Global Rail Construction.

**As this is our 20th anniversary we would like to take a moment to remember all those who have passed from our Global Family.  
You are always in our thoughts.**

# WELL DONE



**Well Done** to Dayle Kirk (GRSL Chargehand), who was presented with his March / April Safety Awareness certificate and gift voucher. Dayle, who is an employee safety representative, was proactive in the awareness aspect of the role completing the Health & Safety Authority online training course.



**\* WELL DONE DAYLE \***



Vas Vancea (GRCL Project Manager) commenced his studies in 2018 at the University Hyperion in Bucharest, Romania. Hyperion University is the first private higher Education institution founded in Romania.

Vas studied Profile Management and after 3 long years has completed his studies and is now fully qualified and holder of a Bachelor's Degree in Management.

Vas worked very hard to achieve this and he also said the following to his GRCL family, ***"Thank you all for your support and patience whilst I was completing this, it is very much appreciated"***.

**\* WELL DONE VAS \***



**\*\*\* WOW \*\*\***

**OVER 3500 Followers!**

**Thank you for following us from around the globe.**

**We will continue to provide updates that are interesting & engaging as we look towards our next milestone**





## CONGRATULATIONS

**Jan Foster**

**(GRCL Senior Design Engineer)**

**10 Years Service**

Global Rail Construction Ltd (GRCL) were delighted to celebrate the 10 Year Anniversary of Senior Design Engineer, Ian Foster.

Ian has provided his services to GRCL over the course of the last decade and is able to deliver complex and challenging contracts whilst providing invaluable guidance and support to our design and project teams.

**We would like to take this opportunity to thank Ian for his continued professionalism and commitment to Global Rail Construction.**



Jim Cuell (GRCL Commercial Director) and his wife Ali, completed the London Half Marathon, Fundraising for Macmillan Cancer, on the 01st August 2021. Jim said of his reason for choosing Macmillan Cancer as his fundraiser was ***"We all hear stories of people who have been through cancer but when it is someone close to you it really brings it home! If I am able to raise money to support people suffering with cancer then the personal challenge of completing the half marathon would have been worth all the hard work"***.

**Jim and Ali raised a staggering £2,277!!**

**\* WELL DONE TO YOU BOTH \***



## HAPPY BIRTHDAY

A very Happy **60th** Birthday to Robbie Cousins (GRCL General Operative) who celebrated his birthday in July.

**We all hope you had a wonderful time celebrating this milestone birthday**



*Robbie Cousins (L) presented with his gift by Derek Webb (GRCL Supervisor)*

# Congratulations



**CONGRATULATIONS** to Barry Smith (GRCL Project Manager) and his beautiful wife Melissa. Barry and Melissa celebrated their wedding day on the 26th July 2021. As you can see from the picture, some of the Global Family were also there to assist with the celebrations....

**WISHING YOU BOTH  
EVERY HAPPINESS TOGETHER**

Phil Guinan-Browne (GRCL Electrical Manager / Qualified Supervisor) and his wife, Innes, who welcomed their beautiful daughter.

Phil said *"My wife and I couldn't be happier, our daughter is such a delightful, happy and smiley girl. Whilst we've had a few sleepless nights, she wakes us up in the morning beaming with smiles and laughter"*

**CONGRATULATIONS TO THE GUINAN-BROWNE FAMILY**



**FANTASTIC ACHIEVEMENT** by Adam Wisker (GRCL Quantity Surveyor) who received his **Bachelor of Science with Honours Quantity Surveying First Class Honours**

Adam said of this momentous occasion, *"I have received my final university results, and can finally confirm that I have achieved a First class honours. Thank you so much for the support Global Rail have given me the past 4/5 years"*.

**WELL DONE ADAM  
WE ARE ALL VERY PROUD OF YOU**

## Award Summary

Year	2020/1
Conferred Award	Bachelor of Science with Honours
Award Title	QUANTITY SURVEYING
Award Mark	76.33%
Classification	First Class Honours

## SHARE YOUR NEWS

Tell us what's happening or send us your pictures or videos.

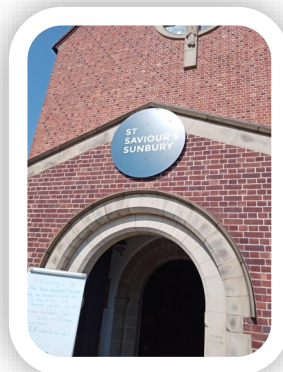
[globalnews@grcl.co.uk](mailto:globalnews@grcl.co.uk)



As Principal Contractor for the Feltham Resignalling Advanced Civils for Phases 3&4, the **Global Rail Construction Limited (GRCL)** team has been recognised by Network Rail's Southern Capital Delivery for making monthly food bank donations to St Saviour's Church. St Saviour's is a charity within the local community adjacent to the site compound at Kempton Park.

The team has also undertaken joint breakfast and safety stand down briefings at Staines covering Environment Principles - identification of protected plant & species - Summer Holidays – work sites and risk to younger people, personal experiences and shared learning and Primary project Safety Objectives.

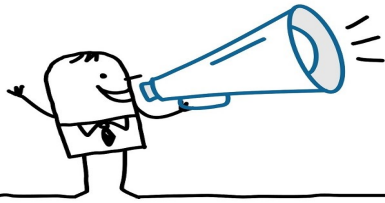
**Well Done To The GRCL Team  
For Doing The Right Thing  
&  
For Supporting Our Lineside Neighbours**



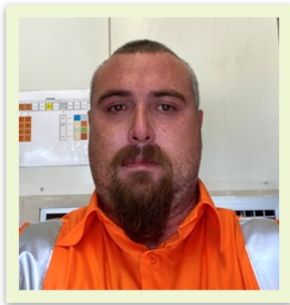
**SHARE YOUR NEWS**

Tell us what's happening  
or send us your pictures  
or videos.

[globalnews@grcl.co.uk](mailto:globalnews@grcl.co.uk)



## Welcome To The Global Family...



Luke Murphy  
Telecommunications  
Technician



Jamal Mohammed  
Civil Intern



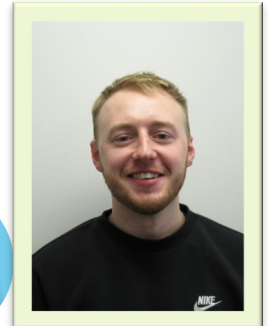
Nayan Borse  
Telecommunications  
Intern



Connor Bailey  
Site Manager



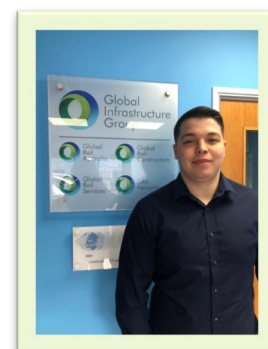
Ciara Fox  
Accounts & HR  
Assistant



Sean O'Brian  
Health & Safety  
Administrator



Tim Lewis  
Structural Design Engineer



Kieron Lickfold  
Construction Quantity  
Surveyor Apprentice

The Global Infrastructure Group of companies, which have been established since 2001, incorporates – **Global Rail Construction Ltd, Global Rail Services Ltd, Global Rail Australia Pty Ltd and GRA Networks** a subsidiary operating in both Ireland and Australia.

***“Our USP is without doubt our people and our long-term strategy will ensure we continue to invest in and develop our people to enable us to deliver our customers expectations, in an efficient and consistent manner”.***





Global  
Infrastructure  
Group

A Leading Provider Of Turnkey Solutions  
For The Rail Industry



Railway  
Construction



Civil  
Engineering



Telecomms



Multi-Utilities



Power  
Networks



General  
Construction



Design and  
Consultancy

Combining technical and innovative excellence with a  
real passion for detail and safe delivery of projects

[www.theglobalinfrastructuregroup.com](http://www.theglobalinfrastructuregroup.com)