



GLOBAL NEWS



In This Edition.....

- * **Project News**
- * **New Starters**
- * **Celebrations**
- * **A Day In The Life...**



Foreword

Welcome to another edition of Global News and our final one for 2021.

Welcome to another edition of the Global News Magazine. I am sure you will all agree that this publication provides valuable updates to the Global Infrastructure Group and is a fantastic mechanism by which the different organisations can keep up to date with new developments and progress across the GIG Family, particularly our people, and a really positive way to sign-off 2021. I really hope you enjoy the read!

The GIG Group of companies continues to expand and diversify its services which now include Civils/ Structural, Utilities, Telecoms, Track, Signalling and E&P (M&E), all continuing to be professionally and safely delivered on many infrastructures, across various climates, demanding environments, and differing time zones. This year has also seen both Global Rail Construction and Global Rail Services achieving a major milestone! Both businesses have celebrated their 20th anniversary which is an incredible achievement and a real testament to all our people that have helped support and grow the business over that time and helped develop the GIG group as a trusted partner and a business that can be relied upon. It has been an extremely busy year across all entities within the GIG group with a number of major and high profile projects delivered by our in-house capability. We have a really strong order book going into 2022 and beyond which helps the business to grow its capabilities whilst providing a secure future pipeline of works to assist that growth.

However, through all of this, the risks and challenges to both our personal and working environments as a result of COVID19 remain. Over the past 20 or so months, the effects of C19 has affected many of us in one way or another. Various strains continue to mutate themselves adding further risk to our health and wellbeing. Our HSQE teams and staff across the globe have worked extremely hard to ensure that throughout our operations the necessary PPE, briefings, training, advice, familiarisation and required risk assessments have been reviewed, enhanced and implemented, where necessary, to ensure we keep our people safe and out of harm's way. There are many vaccines available now which are certainly helping fight back against this pandemic, however we must also continue to be responsible and help keep ourselves and others safe and protected at all times.

We have continued to work through all challenges that we have encountered. Our teams of people have been incredible and continue to deliver an exceptional service, often exceeding our clients' expectations, maintaining our professional approach with our commitment to deliver safely each and every time. Again, safety performance throughout this year has been exceptional, our focus and direction has continued to ensure we deliver consistently and are recognised as '**best in class**' and '**the partner of choice**' for our clients and our priority must continue to be focussed on the safety of our people and partners.

Both Ivan, myself and our wider management team at the Global Infrastructure Group would like to take this opportunity to personally thank you all and to wish you and your families, our clients and our supply chain partner's a very happy Christmas and healthy and COVID-19 free new year!

Kind regards

Marco Lombardelli
Managing Director

[#ThankYou](#)

[#KeepSafe](#)

[#StayWell](#)

[#MerryChristmas](#)

[#FamilyTime](#)





Save the Children
CHRISTMAS JUMPER DAY



Since 2012, amazing people like you have put on their jazziest jumpers for **one Friday in December**, donated £2 to Save the Children and raised money to help protect the magic for vulnerable children around the world.

The GRCL team supported Save the Children and donned their Christmas Jumpers on the 10th December.



WOW.....
We raised £124.00!!!
THANK YOU ALL SO MUCH



Passionate

Committed in heart and mind to whole-heartedly embrace our core values and culture, without exception.



People

Growing our organisation from within, promoting and empowering our people, inspiring them to be the best they can be.



Professional

At all times we act with integrity, providing quality service, reliably and responsibly.



Teamwork

Working collaboratively whilst supporting and respecting each other's views.



Responsible

To consistently deliver quality, on time, safely and to budget whilst protecting our communities and the environment.



Global Rail Construction secures HS2 route works contract



Global Rail Construction Limited (GRCL) has secured a rail contract on behalf of HS2 Principal Contractor Skanska. The main contract for Network Rail will replace the existing SAS 13 Bridge in Birmingham, which will facilitate an increased lateral clearance below the structure to enable the construction of HS2's new up, down and depot access lines. Additionally, the new structure will allow for a road access to a new train depot and maintenance facility used by HS2. Global Rail Construction Limited's contract covers the removal, installation, testing and commissioning of the Cable Route Management System (CRMS) and High Voltage (HV) cabling to allow for cable diversions to enable the bridge jacking to proceed. The contract for the High Voltage Route and Cable Installation works will need to be completed well in advance of the May 2022 blockade.

The full scope of works covers:

High Voltage Cable Route

- Supply and Installation of Track Side Elevated GRP Trough Route – Circa 260m
- Direct Buried Route (Ground is a haul road of Stone and Geogrid) including excavation and subsequent backfilling – Circa 50m
- Supply and Installation of Cable Rack through Confined Space Culvert – Circa 50m
- Direct Buried Route (ground is a 100mm reinforced concrete slab in a licenced asbestos area) including excavation and subsequent backfilling – Circa 45m
- Supply and Installation of Ground Laid GRP Trough Route – Circa 140m
- Coring through the River Rea Culvert headwall

HV Cable Installation

- Hauling and installation of approximately 1600m of single core cable 120mm² copper XLPE insulated with 83mm² screen, MDPE, graphite – including 2No HV Joints
- Hauling and installation of approximately 1600m of 19/4.22 aluminium red PVC insulated cable – including 2No HV joints
- Testing and proving of installed cables

GRCL will provide experienced management and supervision to deliver this contract. Resources will be controlled to maximise collaboration with Skanska's team, and achieve agreed outcomes in terms of quality, health, safety, and environmental performance. GRCL's team will also provide daily input to support co-ordination meetings and deliver any necessary technical and programming information along with any other assistance to ensure the full integration of the work of all parties involved.



Global Rail Construction Ltd

(GRCL) have been contracted to carry out the role of Principal Contractor for the construction, and Principal Designer to coordinate all design packages on this project.

Soho Depot DCS (Depot Control System – West Midlands Trains (WMT) Soho Depot is located in Smethwick, Birmingham and controlled by WMT.

To make the depot more efficient and to reduce the shunter workload WMT are installing an automated points control system and removing the current manually operated 'crank handle' points.

The preparatory points system design and installation is being carried out directly for WMT by Fenix Rail Systems Ltd.

GRCL also have to carry out design and installation of route works, ground mounted signal bases, cable management sleepers, 3 phase sub-main distribution feed and distribution box foundations throughout the depot for the system.

Works are due to start on site in January 2022 and further progress updates will be given in future newsletters.



Global Rail Construction Ltd
is a Principal Contractor and a leading UK provider of
design and build services to clients in the rail and
transportation sector



Member of the SNC-Lavalin Group

Global Rail Construction Limited (GRCL) is delighted that Sunningdale Level Crossing was signed into use following completion of a 10-day road closure as part of the Feltham and Wokingham Resignalling Phase 2 project.

Team GRCL were awarded a multi-disciplinary contract on behalf of Atkins Global for the Civil and S&T installation works for the Sunningdale MCB-CCTV, which was subject to a full level crossing renewal.

Impressively, this is the first standalone Electrologixs in service anywhere in the UK.

A great collaboration with [Atkins Global](#) and a fantastic achievement for all concerned.





FGS / Zinfra

FGS (Frameless Glass Systems) have recently moved into a new pre cast factory. The factory required a power upgrade to accommodate the gantry cranes and increased power draw from new equipment.

A new substation is being installed outside the factory by power authority Zinfra, who have in turn recommended GRA to undertake the civil SOW for the project:

This project involves preparation for installation of a 1500Kv

Zinfra substation:

Scope as follows: -

- Service scanning existing area and set out of new substation compound
- Diversion of Existing SW drains around new compound footprint
- Installation of power conduits from Substation to property boundary
- Core new holes below factory foundations to allow conduits run from Substation
- Form and pour new substation slab
- Form and pour new driveway slab above conduit run
- Backfill around new substation compound with 20mm No fine rock
- Form and pour 150mm upstand around perimeter of compound
- Install 5 x crash bollards around perimeter of compound
- Remove excess spoil, clean and demobilization from site



Conduit run from SS to property boundary



Slab formed & ready for concrete pour



Bollards installed, stone added & concrete upstand poured

GRA worked closely with Zinfra and FGS to complete the install of the new 1500KV substation. All works are completed in a live operational environment. Global Rail staging program and procurement plan was key to the success of the project. We worked closely with Zinfra to get aspects of the civil scope of works done on time to enable Zinfra to power up the substation, due to this the project had to be done in 2 separate phases. No reports or incidents were raised by the public or client. Global Rail encountered no Industrial Relations during this project. Global Rail Australia have delivered this project by investing their time and expertise and delivered this project on Time with no safety concerns. This was our first job for FGS, we have successfully executed this project with and hopefully continue to deliver more in the future.



GRADCO

Successful Installation of Turnouts in Railton

Global Rail Australia Pty Limited's Track Construction Division has completed their awarded contract with partner Gradco, for 2No 1 in 10 Turnouts and 200 meters of plain line track installation in Railton, North West Tasmania, on behalf of rail operator Tasrail, in Tasmania.

The team at Global Rail Australia pre-built the 2No turnouts in 4 days prior to a 3-day railway occupation.

During the occupation Gradco carried out all formation works in readiness for Global Rail's installation of the turnouts and track.

Impressively, Global Rail Australia successfully installed all the new points, track and new racor lever boxes ahead of time in the occupation. Global Rail's welding teams completed 45 welds during this time, which all passed NDT (non-destructive testing) inspection.

Global Rail Australia Pty Limited has in-house specialist teams that deliver individual track projects for a vast range of clients, providing bespoke solutions to meet their requirements. Services include:

- Heavy and light rail construction
- Turnout construction and installation
- Track reconditioning
- Track welding
- Tie renewal
- Track formation
- UTX installation
- Track maintenance
- Rail defects
- Track resource supply

Global Rail Australia also provide a 24/7 emergency response service for all track construction works.



Our vision is that everyone arrives for work healthy and leaves for home safely, everyday.



Terang Track Drainage Remediation Works Completed

Global Rail Australia's Track Construction division has completed a track occupation on the Warrnambool line for V/Line Corporation, as part of their valued customers rail infrastructure upgrade program. Global Rail Australia has successfully delivered a track drainage remediation – through the installation of a new drainage system adjacent to Terang Station.

In overview, the project involved the construction of 3No new precast concrete culverts, installation of new precast concrete drainage pipe and pits and new slotted drains and construction of open shaped earth drains. Global Rail Australia's methodology supported the delivery of all the culvert works under the tracks without the need for removal of the track. Upon installation and alignment of the culvert sections, sleepers were then installed and compacted using the excavator tamping head to achieve the line speed.



A more detailed scope of works is as follows:

- A new RCP drain at Shadforth Street (including pipe, wing, and end walls)
- A new RCP drain at Simpson Street Level Crossing (including pit, pipe, wing and end walls)
- Installation of new box culverts adjacent to Simpson Street (under track)
- Installation of new box culverts adjacent to station building (under track)
- Excavation and removal of existing 225mm HDPE pipe and installation of a new 450mm HDPE slotted pipe
- Reprofiling of an existing open drain adjacent to the track
- Installation of new box culverts near the end of the station platform
- Installation of new head walls to the existing HDPE pipe
- Formation of a new earth V-Drain adjacent the rail line
- Removal of spoil

Works were completed during challenging weather conditions and within a narrow occupation period, with heavy wintery conditions and continuous rainy days during the track occupation, hampering Global's team of track experts at every opportunity.

High levels of management were therefore key, with Global Rail Australia able to call upon its multiple experienced Supervisors and Track Engineers to plan and deliver the works and ensure the project was executed within its 12-day occupation. The project was also resourced heavily, with Global Rail Australia needing to assemble three large crews, each crew having a Supervisor, with multiple labourer's, plant operators, excavators, dumpers, small plant and tools.

All works were satisfactorily completed in a live operational environment with no reports or incidents raised.

Global Rail Australia is delighted to have V/Line as one of its valued rail clients and is pleased to have completed this important project.

We look forward to more collaborative success in the future.





Project Updates

Ericsson Optus 5G Project Completion

GRA Networks Australia has completed its 5G upgrade at this first eJV site in just 4 weeks. The site is at the corner of a busy metro area, so stakeholder management was key to its success, with the GRA Networks team liaising with the Town Council, Tram company, Power Authority, Crane Operator and Welding and Traffic Management teams respectively each day. A pre-start meeting was held each morning across all stakeholders, to ensure everyone was working safely and collaboratively.



GRA Networks Australia's project deliverables included:

- Replacing the existing steelwork frame
- Installation of new trunk cables
- New antenna installation and RRU's for VHA and Optus
- A power system upgrade
- Site integration and test calling

GRA Networks Australia is a multi-disciplined provider offering a comprehensive suite of services including design, construction, installation, commissioning and maintenance of both fixed line and mobile communications networks. As a full service telecommunications contractor, GRA Networks provides a comprehensive range of services from upgrading existing infrastructure, to building new mobile phone towers and other wireless network infrastructure.



Project Updates

Melbourne PTV RAN Refresh – Build Services

GRA Networks Australia is delighted to have been selected as telecoms build partner for the award of a contract for SMR work, to swap out old “end of life” Siemens BTS hardware and install new Nokia Flexiedge BTS hardware within a new Eltek BTS.

There are 109 sites in the program, which will run over the next eight months and the cutovers are limited to a 2 hour window either within ALBF or under occupation of the line.

Works include:

- Site make ready works (installation of New BTS and equipment)
- Installation and commissioning
- Integration and activation
- Decommissioning of legacy equipment
- Site acceptance

GRA Networks Australia has a team of highly skilled telecommunications professionals which includes Project Managers, Telecommunications Engineers, Telecommunications Riggers, Fibre Splicers, Electricians and Technicians.

The range of services GRA Networks Australia offer includes:

- 3G, 4G and 5G equipment installation and commissioning
- IBC and DAS systems installation and commissioning
- ‘Green Field’ builds
- Wi-Fi network installation and commissioning
- Transmission links installation and commissioning
- Earthing systems installation and testing
- Fibre and copper networks distribution and transmission networks
- Tower construction, retrofit, maintenance and inspection
- Condition surveying and reporting
- Emergency response
- Operation and maintenance services
- Consultancy services



Global Rail Australia has proven experience in delivery of the most exacting projects across a diverse range of service sectors. Our in-house capabilities, our scale and our supply chain partnerships have allowed Global Rail Australia to deliver complex multi-disciplinary projects that make a positive difference to our clients across the Australian infrastructure industry that we serve.

5 Plane Tree Avenue
Dingley Village
Vic 3172
Australia

+61 (0) 3 9551 0465



Global
Rail
Australia

Project Updates

Global Rail Australia (GRA) EWP Purchase

GRA have expanded their plant fleet with the purchase of the T480 EWP from Ruthman Steiger. The T480 EWP has a lorry chassis supplied in Australia with the main tower and other components being manufactured in Germany which will arrive in Australia fully functional and ready to be used in March 2022.

This will compliment the existing 33m and 36m EWPS currently deployed by our Telecoms Division on 5G Upgrades throughout Victoria.



Global Rail Australia Digitalization

As an infrastructure business supporting state and federal customers like Metro Trains, V-Line, Tasmania Railways and Australian Rail Track Corporation, GRA requires systems that can allow transparency at client, customer, project management and accounting phase to achieve a long term growth plan and to keep itself up with the current needs of the customers. Currently, GRA's internal processes are all manual and paper based.

GRA has chosen MYOB Advanced and Symphony3 as our Digital Integration Partner.

Symphony3 will provide the integration and bring all our processes and procedures into the digital age. It will help eliminate manual handling, reduce paper use, easy accessibility to reports and better decision making.

MYOB is a cloud ERP platform. MYOB Advanced delivers end-to-end business management software in one cloud platform. It provides real-time visibility.

Some of the benefits are listed below:

- It will help handle complex financials across structures and locations
- Gain real-time visibility and minimise manual data entry
- Customisable and comprehensive reporting and analysis
- Structure our accounts with organised segments
- Real-time tracking and management of billing, time and expenses
- Manage projects with a single location needed to track all costs, revenues and budgets
- Manage account processes accurately and efficiently.

Implementation for first stage of scoping will commence in last quarter of 2021 and carry on throughout the year of 2022.

Nokia VHA (Vodafone Hutchison Australia) Project

This project required **Global Rail Australia (GRA)** to undertake the internal and external scope with upgrading the 3G/4G network and install the new 5G for Vodafone and Optus. The work involved removing existing steelwork, antennas, RRU's from a steelwork structure and re-install new 3G/4G antennas with new 5G antennas on new steelwork, mounted to the existing steelwork structure.

The scope of works were as follows: -

- Remove existing antennas and steelwork from existing steelwork structure on rooftop.
- Install new steelwork on existing steelwork structure on rooftop.
- Install new antennas for 3G/4G and 5G network to the newly installed steelwork.
- Install new VF and Optus ancillary equipment and Hybrid Trunk cables.
- Remove existing internal Base Stations and re-install new Base Station.
- Integrate upgraded 3G/4G technology and new 5G into the Vodafone/Optus Network.

These works were performed under an SLO (Site Long Outage)

GRA required a crane to lift materials to the antenna location to install and remove steelwork and antennas. GRA also required Traffic Management for public safety, whilst operating Crane, and/or whilst on the steelwork rooftop structure.

All works were delivered by GRA at a high level of professionalism and safety with no safety concerns.

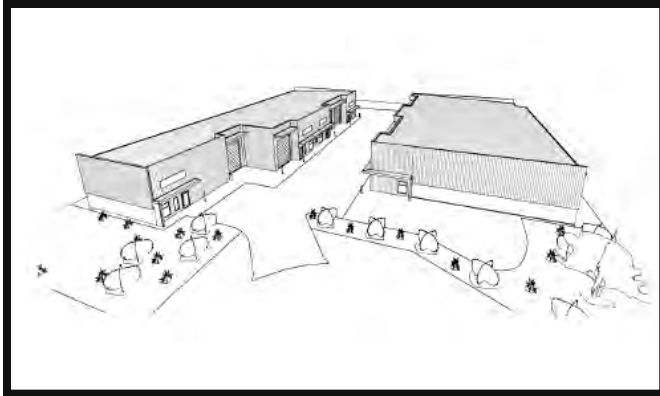
GRA provided the management, technicians, riggers and contractors with all relevant quality, safety and standards, based on the following scope of activities.

- Access with land owners and/or landlords
- Contractors, i.e. Crane, Traffic Management, Electricians
- Liaising with Vodafone and Optus RIC to integrate the newly upgrade technology into the network
- Providing acceptance or handover packs





Global
Rail
Australia



Global Rail Australia (GRA) have engaged designers Prime Design and local builders Tas City Builders to commence the works of the Tasmania Development Project. The project scope is the building of 8 new industrial units and associated works one of which will be GRA's new offices and yard in Tasmania to service its existing and new contracts with Tas Rail, Gradco and West Coast Wilderness Railways.

Due to Covid, the project timeline had been pushed out but now is finally underway. The location of the Tasmania development project is located within walking distance of Launceston airport and well situated for central Launceston.

Tas Rail – IIP State-wide Rail Flaw Defect Removal Contract- Won Tasmanian Railway Pty Ltd (TasRail) tendered for suitably qualified, experienced and competent Contractors – which was awarded to Global Rail Australia Pty Ltd to undertake the removal of detected rail flaw defects and resleeper. GRA mobilised onsite late October with a completion date of May 2022. The GRA project team will plan the removal of the defects between train running time and best windows to remove the defects.



GRA will utilize all its in-house HI rail excavators and plant to carry out these works. This project covers all rail lines in Tasmania with over 450 rail defects to remove plus rerailling and resleeper.

Some of the scope of works GRA will execute over the coming months:

- Bell Bay Line remove 372 rail flaw defects utilizing rail inserts
- Bell Bay line restressing approx 5KM
- Bell Bay Line reraill 1800 m
- South Line remove 18 rail flaw defects utilizing rail inserts and minor rerailling
- Western Line remove 23 rail flaw defects utilizing rail inserts.

A DAY IN THE LIFE OF

In this issue, we meet Poorti Sachdeva, Finance Manager for Global Rail Australia.

We find out a bit more about her.....

What project are you working on currently?

Digitalisation and integration of corporate processes in Global Rail Australia complimenting it with transitioning to our new ERP system.



What is your most favourite thing about the job?

Not limiting to business's financials and accounting but also being able to offer professional guidance on numerous matters that impact the business.

What advice would you give to anyone considering this profession?

To succeed in this profession, one has to keep evolving. There is always something new to learn and requires continuous professional learning.

Accounting is not just about crunching numbers but is a blend of analysis, problem solving and detective work; to do the job right one must be able to communicate effectively and deal with people.

What do you feel most proud of?

Being a mother to my 14-year-old son.

If you could travel anywhere, where would you go and why?

I would travel to NASA space station with my son.

How do you spend your free time?

I enjoy painting as in dot painting, ceramic and clay painting.

What is your favourite sport?

Formula 1 Car Racing.

If you won the lottery what would you do?

I would love a trip to Space like Elon Musk.

Global Rail Australia Global Rail Australia has proven experience in delivery of the most exacting projects across a diverse range of service sectors. Our in-house capabilities, our scale and our supply chain partnerships have allowed Global Rail Australia to deliver complex multi-disciplinary projects that make a positive difference to our clients across the Australian infrastructure industry that we serve.

5 Plane Tree Avenue
Dingley Village
Vic 3172
Australia
+61 (0) 3 9551 0465



Project Updates

GSMR Civils Works, Package 3A Package No (Dublin to Cork Line)

The GSMR 3A Package 2 (Cork Line) is progressing well, 12 sites have been completed to date. The team also had an emergency to install a 13m timber pole to finalise the commission of the Rosslare line under possessions.

Global Rail Services (GRS) were engaged at very short notice to complete the following works:

- Access track and ballasting out of track
- Excavation in peat ground conditions
- Installation of precast rings and pole sleeve
- Concrete base and gantry pole base
- Installation of 13m timber pole
- Rigging of pole to IR standards

Eddie Walsh, from Irish Rail, complimented the team for their excellent workmanship and safety of completing this site under strict deadlines.



Project Updates

GRA – Loughshinny Cabin Landing Station

GRA was engaged to design and build a new Cabin Landing Station for a new client to facilitate a new sub sea fibre cable from New York to Denmark.

As the site is in an ESB telecoms compound and in the outer compound of an ESB substation the restrictions and safety were paramount.

Scope of works:

- Full design package
- Diversion of existing ESB lines
- Installation of new ESB ducting to facility the build at location
- Removal of all trees and hedge rows on site
- Installation of TWD to protect existing on-site structures
- Excavation and movement of 350 tons of earth
- Installation of C1804 to bring levels back to formation
- Installation of new ducting and earthing
- Installation of Cabin plinth
- Installation of drainage attenuation pond
- Lifting in place the new structure. Prebuild off site and lifted into position in 4 sections
- Finally, all supervision for commissioning and testing of new cabin

All works were completed on time and the new subsea cable landed into Ireland early December from the Isle of Man and the site will be fully commissioned in Jan 2022.

**THANK YOU
Everyone**





NETWORKS

In 2019, ESB Networks commissioned ESB Engineering & Major Projects (EMP) to undertake an environmental screening assessment of the fluid filled cables network to identify and assess leaks. Following the completion of the assessment, and in agreement with the EPA and relevant authorities, a decision was made to begin intrusive assessments at agreed locations in order for an Environmental Consultant to complete the assessment.

Following a competitive tender process, ESB have recently appointed **Global Rail Services Limited (GRSL)** as PSCS with our scope of works

involving the site investigation of 62 No. slit trenches and 3 No. 'L' trenches to be completed at 23 No. sites, all excavations are anticipated to be 3m deep.

Slit trenches are indicatively located in close proximity to the assumed leak locations or between the assumed leak locations and sensitive receptors. The ESB appointed Environmental Consultant will recover soil samples from the extents of the excavations, at surface level. Soil sampling will be carried out by the Environmental Consultant at locations shown on the drawings.

GRSL are responsible for all works associated with the site investigation, including the removal of excavated material. The removed material from trenches located in paved areas, unless otherwise advised by the Environmental Consultant, shall be deemed contaminated.

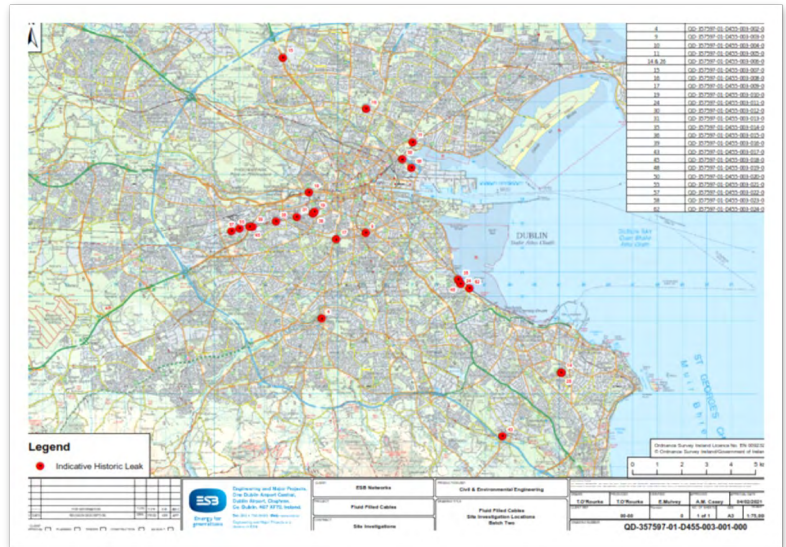
The waste material will be loaded by GRSL and removed from site by our suitably licensed/ permitted haulier. The removed material shall be transported to our EPA licensed hazardous waste facility supply partner ENVA. Appropriate Waste Transfer Notes shall be used to clearly demonstrate cradle to grave waste transportation.

Given that there will be no outages on the HV circuits located adjacent to the trial pits, all excavations will be conducted on live 38kV, 110kV and 220kV circuits. As the excavations will be conducted adjacent to live HV cables, GRSL will be liaising closely with ESB Networks HV cables supervisor to ensure that these excavations are conducted and executed without any damage to ESBs assets or damage to any other utilities.

GRSL are aiding ESB with the application of all road opening licenses and road closures by providing site specific traffic management plans and RAMS. Permanent reinstatements in public roads and footpaths will be carried out in accordance with the DTTAS Guidelines for Managing Openings in Public Roads (Purple Book) 2017 edition.

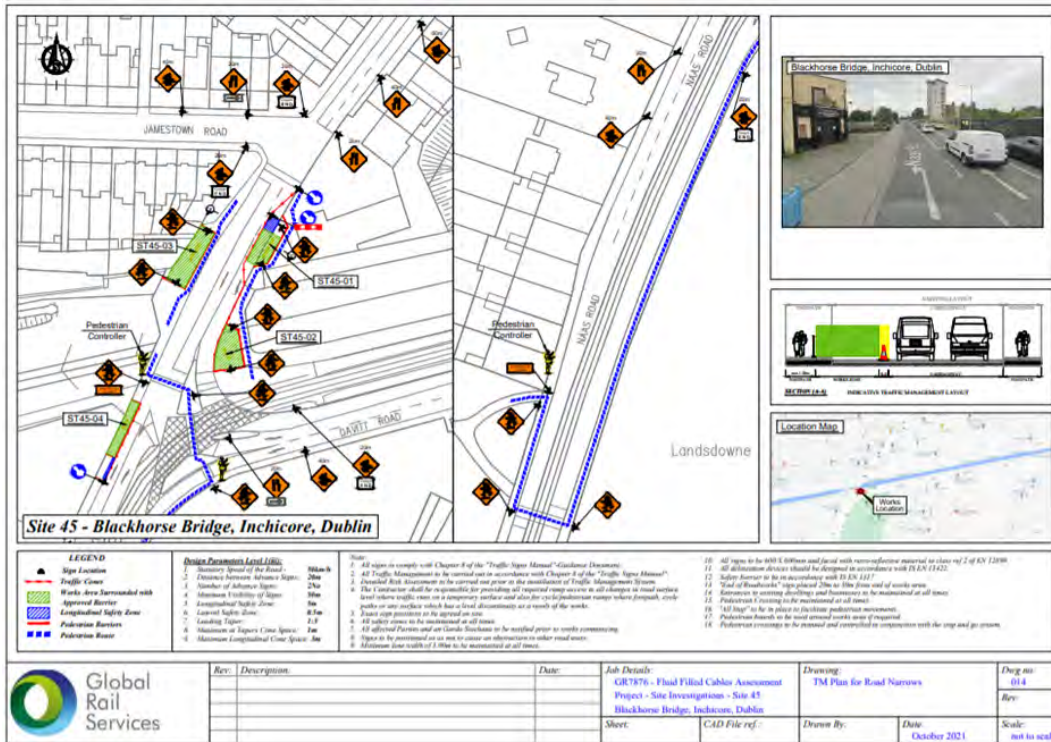
All locations, given the heavily trafficked areas will require GRSL to have substantial traffic management in place with traffic & pedestrian marshals in place to guide pedestrians around the works.

This project commenced on the 15th November 2021 and with operation freeflow commencing on the 27th November 2021, GRSL were restricted to carrying out the works at locations that do not require road opening licenses for the month of December. After a lot of careful planning and negotiation with Waterways Ireland, Dublin City Council, Leopardstown race course, we were able to carry out works in the month of December without any impact to the 4 month programme.





NETWORKS



Global Rail Services



Roof Drainage Pearse Street, Co. Dublin

The overall objective of the project was to construct a new rainwater pipe route to carry rainwater falling on the northern half of the main train hall roof at Pearse station and connect it to the public sewer. A rainwater harvesting tank was also to be installed on the platform which will be used by station cleaners.

All the materials such as the 5000l rainwater harvesting tank and 6m lengths of 250mm dia HDPE pipe and electrofusion fittings had to be delivered at night. The removal of the existing cast iron down pipes also had to be completed under nighttime possession during the isolation of the overhead lines due to the height and proximity to the running rail.

Upon installation of a secure site compound on the platform edge works continued effectively during the day. Pull out tests were carried out by Hilti on the existing substrates and GRS provided significant design input in co-ordination with Irish rail to overcome any unforeseen issues.

The works also involved the installation of a cast Iron down pipe onto Sandwith street that had to be completed on a Sunday due to the limitations imposed by the road opening license. All works were completed safely, and the footpath re-opened at the end of the shift.

A temporary diversion was required during the change over from the existing drainage to the new drainage line. During the removal of the existing cast iron down pipes.

The complete installation from start to finish was completed by Global rail services under the leadership of Dan Sweeney (GRSL Supervisor). All operatives involved in the execution of the works completed the 2 day electrofusion welding course allowing the future installation and connection of pipes to the Irish water mains network.

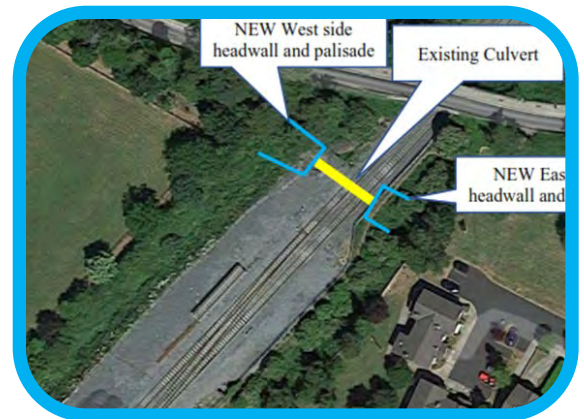
The completion of the works also required the input of the Electrical Team who installed a UV filter and provided power to the rainwater harvesting system. This will ensure that the water being used for the platform cleaners is free from contaminants.





UBC66A Culvert Renewal Works Newbridge Station, Co. Kildare

Railway culvert UBC66A is located on the Dublin to Cork line near Newbridge train station. The existing stone culvert had to be upgraded with the installation of new pre-cast head walls and sections of pre-cast culverts to either side. The pouring of in situ culvert sections connecting to 1.5m diameter outfall pipes. The installation of palisade fencing, ladder access, vegetation clearance and reinstatement. The existing culvert remained live throughout the operation.



Prior to the start of the works an over pumping dam had to be set up to enable the 2nr 8" pumps to divert water from one side of the track to the other. Pipes were installed underneath the tracks during mid-week possession to enable substantial prep work to be completed before the start of the final installation. This was followed by the clearance of mature trees a 2m excavation and removal of spoil and the



installation of geogrid, 1m of 6f2 capping layer and 1m of 808 structural fill. As well as the jetting and cleaning of the existing stone culvert that was full of ballast.

The installation of culverts either side of the railway line was completed during a 19 hour possession with the standard culvert unit weighing 10t.

At the start of the possession ESB were in attendance to drop an existing power line to remove any inherent risks during the installation.

All deliveries of stone, culverts and crange was meticulously planned.

Thank you all for your involvement in the successful execution of these works.



Post installation still required the installation of in situ foundations and RC walls to connect to the existing outlets. These works were carried out under look out protection and access was made via a local residential area.

On completion of the culverts the areas were reinstated, and the installation of Palisade fencing was completed, including inspection ladder access.

Cormac Carroll from Irish Rail who was responsible for the works said

"Thank you Eoin and team -Great job done"



Relocation of Workshop, Storage & Welfare Facilities M3 Parkway Station, Dunboyne, Co Meath

Global Rail Services Limited (GRSL) were commissioned to deliver a project to provide for the relocation of the Connolly West Signalling, Electrical & Telecoms (SE&T) department from their existing compound at Connolly Station.

The M3 Parkway Station was identified for the relocation and involved the remodelling of the existing station building at M3 Parkway into maintenance offices for the SE&T Signalling West Department.

The works constituted the refurbishment of the existing station into offices and the construction of 2 no. new storage facilities, one structural steel and one blockwork.

Works also included the renovation of the existing building, removing the old rooflight of the station and installing a new roof covering. The scope also covered the installation and commissioning of a new electrical installation.

The works have been carried out in a manner to cause minimal impact to the safe working of the area and the public in general and with no interference with the operational railway line.

All work has been planned and co-ordinated to cause a minimum disruption to the public as possible for the duration of the works. The site has been fenced off and secured in accordance with both the works and the health and safety requirements. All deliveries were scheduled, and logistics management provided throughout. The implementation of traffic management was continually monitored, reviewed and adjusted as works proceeded.





Installation of 2no. Single MV Circuits over 5.3km—Drybridge to Drogheda, Co. Louth

Global Rail Services Limited (GRSL) has completed a significant and complex civil engineering project from Drybridge to Drogheda Town Centre, in Co. Louth, on behalf of long-term client ESB Networks. In their capacity as Project Supervisor Construction Stage (PSCS) for the project, GRSL supplied a secure yard/compound and were responsible for liaison with ESB, Louth County Council and all affected residents and business owners.

Providing a fully managed service including QSE representation for the project duration, the work scope covered the excavation, ducting, backfilling and reinstatement of trenches, including crossing a stream.

GRSL also connected two existing ducts that were under the M1 motorway, laid ducts over/under existing services and culverts and installed a 400mm² XLPE power cable prior to completion of all road and pavement restoration works.

Significant amounts of hand excavation assisted by a vacuum excavator – to help protect existing services – was also undertaken, which were very deep in a number of locations.

GRSL were responsible for the design and construction of all temporary works.

Full Traffic Management was provided throughout, which covered 8 different road opening licences and 21 separate traffic management plans.

The project was a necessity for the town of Drogheda; supporting power capacity upgrades to enable future development.

Global Rail Services Limited Project Manager, John Casey added:

“Well done to all concerned for a successful project and with special thanks to supply chain partner Córás Pipeline Services Ltd.”



**Thank You Team
For The Excellent Workmanship & Safety
On this site**

Our Markets

Global Rail Services Ltd is part of the Global Infrastructure Group and is a leading Irish provider of design, construct and commission services for clients across a wide range of engineering and infrastructure sectors





Global
Rail
Construction



As part of our continued support to the local food bank charity at St. Saviours Sunbury the GRCL Family at Kempton Park have donated some disposable table wear, paper plates, bowls, cups and napkins to help facilitate a Christmas party for vulnerable children in the area. The community food bank provides food parcels and support to those really in need. St. Saviours had this thank you message to all of its supporters, ***“A massive thanks to everyone who has supported us and therefore the local residents, this year. The list is long but you know who you are. Wishing you all a great Christmas.”***

**THANK YOU ALL
FOR YOUR KIND DONATIONS**



Global Rail Construction



SHARE YOUR NEWS

Tell us what's happening or send us your pictures or videos.

globalnews@grcl.co.uk



“Herts Young Homeless (hyh) would like to say THANK YOU to our lovely corporate partners Global Rail Construction Limited Part of the Global Infrastructure Group for donating some wonderful Christmas gifts for our young people. These generous donations will really mean a lot to our young people and their families.”

Homelessness is difficult at any time but in winter it can be brutal. Global Rail Construction donated various gifts, including chocolates and toiletry sets that will make this winter a little brighter for the young people who need the services of hyh.



The number of young homeless people in England this Christmas could reach a five-year high, according to homelessness charity Centrepont.

The charity, which works with under 25's predicts over 29,000 18-34 year olds face being homeless this year.

It blames the end of furlough, a drop in Universal Credit payments and the cost of living going up. Centrepont is predicting the highest level this Christmas since 2016, when it started recording these figures.



St Albans SLEEPOUT

Friday 19 November

Kindly sponsored by

MORGAN SINDALL
PROPERTY SERVICES

and



buyagift

hyh

Herts Young Homeless

On Friday 19th November, a number of the Global Rail Construction Limited family joined the wonderful team at HyH to support their annual St Albans Sleepout. The event took place at Oaklands College (St Albans) where we slept outdoors for one night to help raise awareness and much needed

funds to support vulnerable young people in the hope of finding them a stable home and getting them off the streets and into a warm, caring environment.

This year, there was a slight twist though. For the first time, the Sleepout went hybrid. Not only will was the physical event held but also a virtual event following on from the successful *Sleepout at Home* last year. This meant more people had the opportunity to join the event. Sleepers were asked to sleep on cardboard, or if you're taking part at home then in a tent, an outside bench or on floors or sofas.

A Zoom event was streamed live from Oaklands College to create a community feel for those taking part at home. Herts Young Homeless was one of five charities who came together to host the Sleepout.



GRCL MD [Marco Lombardelli](#) and Quantity Surveyor [Alessandro Lombardelli](#) joined other brave souls in the cold, by 'sleeping out' in support of its homeless charity partner [Herts Young Homeless](#).

HYH were very grateful and relayed their gratitude by saying the following ***"We wanted to say a HUGE thank you for braving the cold and taking part in our Sleepout. So far you have raised a fantastic £4,990.50 in sponsorship — that's a superb amount of money, so thank you from all the staff, our young people and their families. We couldn't do what we do without a great corporate partner like Global Rail"***.

This Christmas **HYH** have asked if anyone is able to help them by donating various goods which will then get delivered to vulnerable young people whom they support.

The majority of these people are currently living in hostels or sofa surfing without much to look forward to at Christmas time.

GRCL have donated various goods and delivered to HYH in time for distribution to the young people for Christmas.

Thank You All For Your Continued Kind Support



World Suicide Prevention Day 2021: *Creating hope through action*

World Suicide Prevention Day is an awareness day observed on **10 September** every year, in order to provide worldwide commitment and action to prevent suicides, with various activities around the world since 2003.

On this World Suicide Prevention Day, our Global Infrastructure Group family is supporting the international theme 'Creating Hope Through Action'.

In our post-pandemic world, the theme couldn't be more appropriate and we all have our part to play to spot the signs and take action to help those who are suffering with suicidal thoughts. Every life is precious, and each and every one of us can make a difference in the fight against suicide.

Nothing communicates support better than letting someone know, that you would be there in times of need, reminding them there are always ways in which things can get better. As of 2019, there were more than 139 thousand suicides in India, 45% of which were due to mental illnesses such as depression, bipolar disorder, and schizophrenia.

Learn How To Deal With Stress:

Seek professional assistance to identify coping strategies tailored to your specific situation and create a "safety plan" to refer to if you're feeling hopeless.

- Follow treatment schedule. Don't miss any sessions or appointments.
- Keep a list of names and numbers times including doctors, therapists, crisis centers, friends, and family whom you can contact at all times.
- Plan your daily routine. Music or funny movies can help.
- Avoid drugs and alcohol as they heighten impulses and trigger negative feelings.
- Express your ideas and feelings that you value and appreciate in writing.

5 Steps To Recovery:

- Overwhelming emotion can cloud your judgment, leading to self-harming thoughts but with the right treatment and effective coping strategies, you can learn how to help yourself feel better and be hopeful about life again.
- Identify and watch out for warning signs or triggers.
- Keep yourself healthy. Eat nutritiously and take plenty of rest. Workouts release endorphins and relieve stress while promoting emotional health.
- Build a support network. Surround yourself with positivity. Reach out to loved ones and friends when needed. Join a support network to cope with suicidal thoughts and understand all the possible ways of getting help.
- Develop new interests. Try out new hobbies, volunteer for activities, or jobs that give you a sense of meaning and purpose. Your self-esteem will improve when you're doing things you enjoy.



0800 3 58 48 58

Outside UK: +44 141 271 7179

For online support join vClub at [validium.com](https://www.validium.com)



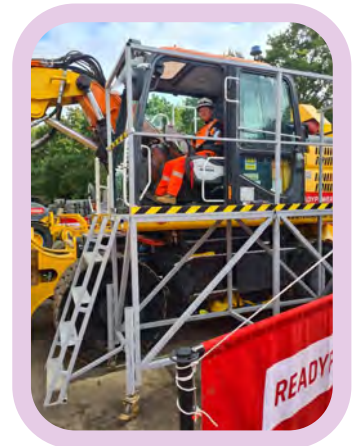
An Employee Assistance Programme (EAP) is an invaluable tool for any organisation, ensuring that good mental health is promoted and facilitated, as well as minimising the impact of any external distractions on employees' abilities to function or focus while at work.

Validium EAPs integrate several clinically proven counselling programmes with an array of specialist work/life services. Provided alongside a unique, proactive approach to account management and promotion, Validium delivers a service that is highly visible within the customer organisation, is trusted by employees, is fully utilised and, most importantly, provides great results for employees.

SAFETY STAND/DOWN

*** Thank You All For Your Time In Attending This Important Event ***

Our UK team held a safety stand down on their Feltham Phase 3&4 programme covering people and plant interface. It was held at Global Rail Construction Limited's Kempton Park Site Depot. Global Rail Construction were extremely happy to welcome along Terry Hare and Florin Stanciu from trusted supply chain partner **ReadyPower**, who brought along one of their Doosan RRV's and a rail mounted people carrier. Terry and Florin discussed the dangers presented when working in close proximity with heavy plant including blind spots and exclusion zones and were on hand to answer any questions. All attendees were offered the opportunity to sit in the driving seat to see just how restricted the operators view is and to understand the danger.



Congratulations



CONGRATULATIONS

to Craig Amer (GRCL Lead Electrician) and Claire who got married in Cyprus on the 05th October 2021.



A wonderful day was celebrated by all

Congratulations to Nick Turner (GRCL Head of MEP) who achieved his Fellowship to the Association of Project Management (FAPM).

Fellowship is **the highest level of membership that the Association** for Project Management (APM) offers.

It's provided for people who've been full Members of the APM for five years or can demonstrate equivalent experience.



CONGRATULATIONS



to Rachel Walsh (GRSL Office Manager) and her husband Darren on the arrival of their beautiful baby boy Sam. Sam was born on the 28th August and weighed 7lb.

Enjoy every precious moment with your beautiful bundle of joy

Mission & Vision

Using the best mix of technology and tradition,
The Global Infrastructure Group empowers its workforce to deliver to our clients the best possible standards of workmanship within the rail industry at a competitive price.



HAPPY RETIREMENT

A very Happy RETIREMENT to Derek Webb (GRCL Supervisor) who retired in December.



We all hope you have a wonderful time enjoying your retirement & we thank you for all your years of service & loyalty to GRCL



HAPPY BIRTHDAY

A very Happy 50th Birthday to Steve Sole (GRCL Estimator) who celebrated his birthday in October.



We all hope you had a wonderful time celebrating this milestone birthday



HAPPY BIRTHDAY

A very Happy 60th Birthday to Martin West (GRCL Construction Manager) who celebrated his birthday in November.



We all hope you had a wonderful time celebrating this milestone birthday



HAPPY BIRTHDAY

A very Happy 30th Birthday to Mauricio Fiorentin (GRCL Civil Design Engineer) who celebrated his birthday in October.



We all hope you had a wonderful time celebrating this milestone birthday



Our Global Rail Construction Limited MD Marco Lombardelli was basking in the glory with Atkins, Network Rail, Greater Anglia and other Clacton-on-Sea Resignalling Project partners, having together scooped the prize for **Outstanding Teamwork at the National Rail Awards 2021**
A fantastic achievement for all concerned!



Golf Evening

Some of the **Global Rail Construction** Family had a top golf evening in September which consisted of some very bad golf, but, a well overdue social occasion.

Adam Wisker (GRCL Quantity Surveyor) was a shark on the evening and cleaned up with his steady and solid swing.
Barry “Happy Gilmore” Smith (GRCL Project Manager) managed to nail the longest drive with his very unorthodox technique—how it worked no one knows!

A very pleasant evening was had by all.



Melbourne Cup Sweep 2021

Melbourne holds one of the biggest racing events in the world “*The Race that stops the Nation*” the Melbourne Cup is held annually in early November. Every year Victorian’s get the Melbourne Cup Day off as a Public Holiday.

This year **Global Rail Australia** decided to hold a Melbourne Cup Sweepstake.

This year’s winner was Gerard Hanley with the Melbourne Cup Horse ‘Verry Ellegant’.

GRA’s full list of winners below:

- 1st** – Verry Ellegant – Gerard Hanley
- 2nd** – Incentivise – Luke Murphy
- 3rd** – Spanish Mission – Stephen Comiskey
- Last but not least** – Ocean Billy – Poorti Sachdeva

*** Well Done To All Our Winners ***



CONGRATULATIONS

Daljit Dhesi

(GRCL Commercial Finance Assistant)

10 Years Service



Global Rail Construction Ltd (GRCL) were delighted to celebrate the 10 Year Anniversary of Commercial Finance Assistant, Daljit Dhesi. Dal has provided her services to GRCL over the course of the last decade and has always provided invaluable guidance and support to our teams.

We would like to take this opportunity to thank Dal for her continued professionalism and commitment to Global Rail Construction.



Pat Rouse (L) (GRCL Project Manager) presenting Chris Hick with his 10 Year Service Award.

CONGRATULATIONS

Chris Hick

(GRCL Supervisor)

10 Years Service



Global Rail Construction Ltd (GRCL) were delighted to celebrate the 10 Year Anniversary of GRCL Supervisor, Chris Hick. Chris has provided his services to GRCL over the course of the last decade and has always provided invaluable guidance and support to our teams.

We would like to take this opportunity to thank Chris for his continued professionalism and commitment to Global Rail Construction.



Safety Awareness

James Buckley (GRSL Permanent Way Maintenance Operative) received the safety award for July, having recorded the highest combined driver score of 89, with a total distance of 2814 KM for that month.

*** WELL DONE JAMES ***



MACMILLAN CANCER SUPPORT

The Global Infrastructure Group is proud to be supporting Macmillan Cancer Support's Coffee Morning. For over 30 years, Macmillan's Coffee Mornings have been held, in order to bring people together over a cup of coffee, to raise funds for people living with cancer.

Macmillan is a charity that works tirelessly to support people living with cancer. Nearly all of Macmillan's funding comes directly from donations, so hosting a Coffee Morning to raise vital funds has never been more important. The funds ensure Macmillan can continue to deliver the services that people living with cancer desperately need, now and in the future.

Marco Lombardelli, UK MD said:

"Our UK GRCL team is supporting Macmillan, whose work is so important to those affected by cancer. Coffee Mornings are a great way to raise funding while enjoying a coffee and some amazing cakes too. Every donation helps to support a fantastic cause - so we are thankful to our team for playing their part."



**Our STAR BAKER this year is Daljit Dhesi
(GRCL Commercial Finance Assistant)
Well Done Dal
Your homemade sponge cake was delicious!**



SHARE YOUR NEWS

Tell us what's happening or send us your pictures or videos.

globalnews@grcl.co.uk



Welcome To The Global Family...



Peter Larin
Telecommunications
Team Lead Rigger



Jose Ramirez
Civil Intern



Bibek Ayer
Telecommunications
Technician



Liam Murphy
Stores Support



Nathan Van Haastar
Telecommunications
Rigger



Phillip Molloy
Telecommunications
Team Lead Technician



Leandro Cruz
Project Engineer

The Global Infrastructure Group of companies, which have been established since 2001, incorporates – **Global Rail Construction Ltd, Global Rail Services Ltd, Global Rail Australia Pty Ltd and GRA Networks** a subsidiary operating in both Ireland and Australia.

“Our USP is without doubt our people and our long-term strategy will ensure we continue to invest in and develop our people to enable us to deliver our customers expectations, in an efficient and consistent manner”.



Global
Infrastructure
Group

A Leading Provider Of Turnkey Solutions
For The Rail Industry



Railway
Construction



Civil
Engineering



Telecomms



Multi-Utilities



Power
Networks



General
Construction



Design and
Consultancy

Combining technical and innovative excellence with a
real passion for detail and safe delivery of projects

www.theglobalinfrastructuregroup.com