



GLOBAL NEWS



In This Edition.....

- * **Project News**
- * **New Starters**
- * **Celebrations**
- * **A Day In The Life...**



globalnews@grcl.co.uk

Foreword

Welcome to the 1st edition of Global News Magazine 2022, the first of a new and exciting year ahead for all our divisions, across the UK, Ireland, and Australia. As always, this fantastic medium provides an interesting and informative overview of all the challenging projects that we are undertaking and the great work and commitment from all our staff. I hope you enjoy reading this latest edition, which continues to provide a unique way to bring together the events and successes that we share as an organisation, across the globe.



2022 promises to be another year which brings new challenges. As the threat and impact of COVID 19 appears to be in decline, the sad and tragic events that are unfolding in Ukraine will also impact our lives and provide further challenges. Ones that will no doubt impact upon us all. The increasing costs in key commodities, materials and services is already being experienced and will become a greater challenge as the year progresses.

However, despite the current volatility in the world we have entered 2022 with much optimism and exciting opportunities facing the GIG, which the articles shared within this publication are testament to. Our project teams are extremely busy and the forward orders for the business are in a strong and healthy position. With the inherent nature of our industry, where weekend and unsociable hours are a prerequisite to maintain and improve the rail infrastructure, the projects that are featured in this and every edition of Global news, could not be delivered without the dedication, professionalism and commitment of our staff.

Our multidisciplinary capabilities are epitomised with the recent engagement on the Feltham Re-signalling project, where we are partnering with the Atkins group to deliver Signalling, E&P and Telecoms installations for Phase 3&4. As many of you are aware, this follows the design and build of the ancillary civils contract, for which we also currently engaged in delivering, as Principle Contractor, direct for Network Rail. Striving to be '*best in class*' and '*the partner of choice*' for our clients. To provide a truly multi-disciplined design and build capacity is tremendous advertisement for our organisation.

As this edition of Global news demonstrates, the diversity and complexity of the projects we undertake continues to grow and evolve. As does the skills and experience that we require to successfully deliver, safely, on time and right first time to meet our client's expectations, along with retaining and developing our core asset, our people. Our culture, through our belief and behaviours, is at the heart of everything we achieve. In addition to the fantastic projects we deliver, it is always empowering to read the stories of how our people excel and undertake tasks and actions that prevent harm or damage to people or property, as well as engaging in charity events to help those less fortunate than ourselves.

Finally, the overriding message for the coming year remains the same and is the most important message of all; **Arrive Healthy, Leave Safely.**

Safety of our people is the overriding factor above all other and for which we must never become complacent.

Sean Donaghey
Operations Director



Milestone Birthday for Ivan



HAPPY 50th BIRTHDAY FROM ALL THE GLOBAL FAMILY



In January, the big boss Ivan celebrated his milestone **50th** birthday. Ivan and the Global Rail Australia family celebrated together after returning from the Christmas break.

We all hope you had a wonderful time celebrating this milestone birthday



Passionate

Committed in heart and mind to whole-heartedly embrace our core values and culture, without exception.



People

Growing our organisation from within, promoting and empowering our people, inspiring them to be the best they can be.



Professional

At all times we act with integrity, providing quality service, reliably and responsibly.



Teamwork

Working collaboratively whilst supporting and respecting each other's views.



Responsible

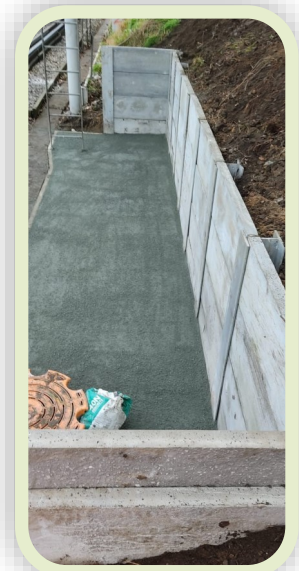
To consistently deliver quality, on time, safely and to budget whilst protecting our communities and the environment.



It has been a busy start to the year for our Global Rail Construction Limited team on the Feltham Resignalling project. During January, the teams have been working on various Signal Laydown Areas and also continuing with a number of LOC Suites - all of which will then be ready for concrete.

The project successfully completed ten consecutive weekend possessions, commencing in January, and a seven day blockade in February.

GRCL would like to give thanks to its entire project team including our integrated supply chain partners, for their continued support on this PC Design & Build project.



Global Rail Construction



Global Rail Construction Limited (GRCL) has commenced its civils and power sub-contract with HS2 Principal Contractor Skanska for their SAS 13 Bridge Replacement in Birmingham.

GRCL's package of works covers the removal, installation, testing and commissioning of the Cable Route Management System (CRMS) and High Voltage (HV) cabling to allow for cable diversions to enable the bridge jacking to proceed.

GRCL's initial works include:

- > Bracketry and ducting installation within a confined space culvert
- > Elevated route installation
- > An LV cable diversion

The contract is due for completion in advance of the May 2022 blockade.



The images show the route work installation for the HV OLE diversion with works progressing nicely



Global Rail Construction Limited (GRCL) has commenced route installation works to facilitate the new automated points operated system on behalf of client West Midlands Trains at their Soho Depot.

GRCL have been contracted as both Principal Designer and Principal Contractor for this project, which includes design and construction of surface and buried troughing route, signal bases, M&E and structural modification works to a Signalling Equipment Room.

GRCL's full scope includes:

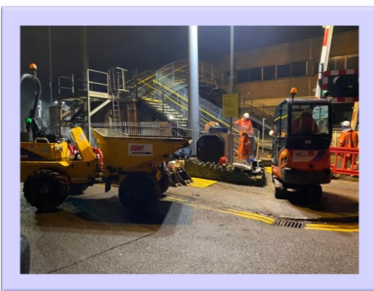
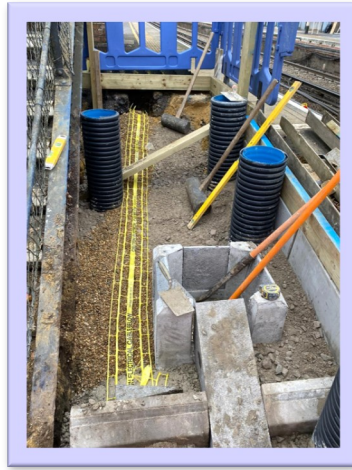
- ◆ 24No Axle counters on Points Rollers (no design)
- ◆ 15No LED Ground Position Light Signals on cast insitu concrete bases (inc design)
- ◆ 15No Disbox Concrete stands (no design)
- ◆ 1No Points Crank Handle cupboard concrete base (inc design)
- ◆ 1350m Cable troughing (inc design)
- ◆ 15No Hollow bearers
- ◆ 2No Stop Board Bases
- ◆ 1No PRI Base
- ◆ Removal of crossing between roads 7 and 8 and plain lining works



Our UK GRCL team has commenced its CCRS Level Crossing programme of works for Atkins, which consists of the renewal of Camberley, Chertsey and Rusham Level Crossings as well as Stroude Bridleway. GRCL's multi disciplinary staff will be delivering both the S&T and Civil Engineering scopes.

The project team have hit the ground running since January and have made excellent progress with enabling works at both Camberley and Rusham. Works constructed to date include new earthing mats, cable routes, stakka boxes and precast bases. All works have been carefully planned around footpath closures to ensure the safety of pedestrians.

Additionally, at Rusham, a DNO base and a ballast board retaining wall have been installed. These enabling works will continue at pace until April, when the main commissioning takes place.



A DAY IN THE LIFE OF

In this issue, we meet Carmel Juanillo, Office Administrator for Global Rail Construction.

We find out a bit more about her.....

What are your hobbies, and how did you get into them?

Cooking! I remember cooking my first dish (Sauteed Seafood) when I was only 9 years old. Being the eldest of 4 children, my mum made sure I led by example to my younger siblings. Therefore, she has taught me everything I needed to know to successfully run a household and cooking was my favourite chore!

What do you feel most proud of?

I am so proud of my son. Every milestone he achieves is a reason for celebration.

If you could travel anywhere, where would you go and why?

I would go back to Tripoli, Libya where I spent part of my childhood. Beach trips after school, fishing with my dad at the Tripoli Pier in the evenings, picking free fruits and vegetables at our neighbour's farm. These are the best memories of my life.

What teacher in school made the most impact on you and why?

All my language teachers! Because of them, I have so much passion for learning different languages.

What was one of your most defining moments in life?

When I became a mother my outlook on life changed. I became a different person, and I am more selfless, loving and compassionate.

If you won the lottery, what would you do?

I would give some to charity and set aside some for my son's future. Oh, and go on an extravagant holiday...

Who do you most admire in life?

My parents - they have sacrificed so much to give me and my siblings a better life. I have so much respect for them. They are my inspiration and they have instilled good morals and values in me that I will pass on to my son.

What are your top three favourite books and why?

***Sapiens: A brief history of humankind* -**

So much information about our past packed in one book!

***Dracula by Bram Stoker* -**

This is the beginning of my obsession for Horror books and films.

***Animal Farm by George Orwell* -**

This book will teach you a lot of things about power and equality.

What are you most afraid of?

Losing a loved one.

What is your strongest quality?

My parents always say that I am strongly determined when it comes to achieving goals.

What was your most embarrassing moment?

Experiencing stage fright at 6 years old. I thought it was a clever idea to enter a recital competition. The first 30 seconds went well and then suddenly I realised I was standing in front of 300 people. I froze and had forgotten the rest of 'The Three Little Kittens' then I panicked and stormed off; my aunt who was with me had to carry me home. Still haunts me to this day....

What is a skill you'd like to learn and why?

To be multilingual! I have always been interested in languages, and I think traveling is easier when you speak the local language.

Do you like going to the movies or prefer watching at home?

I would prefer to enjoy a bowl of popcorn for a much lesser price in the comfort of my own home!





Project Updates

The Optus/ Ericsson eJV Upgrade

The team has completed the following sites this quarter:

Deliverables as follows:

- Replace existing steelwork frame
- New concrete plinths
- Installation of new trunk cables
- New antenna's & remote radio unit's for Vodafone (VHA) and Optus
- Power system upgrade
- Site integration and test calling

Site Schedule

4 weeks prior to Christmas, 1-week post-Christmas break to finalise the build,

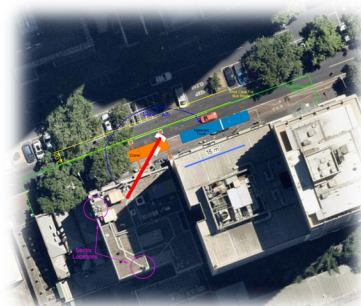
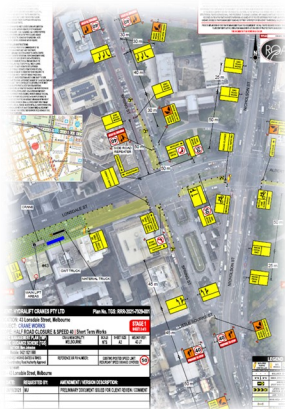
Safety

Optus and VHA full outage for upgrade works reducing RF exposure. Traffic management and Pedestrian management, road closure in the Central Business District (CBD) to protect pedestrians.

Build Phase

The site is located on Lonsdale Street very close to parliament. All crane and heavy works took place on a weekend using a complex traffic management plan and bus diversions in the CBD. Steelwork and decommissioning works successfully went to plan.

All existing technologies, including 5G, went live prior to Christmas break.





Track – Gradco Turnout

Install Turnouts Railton January 2022

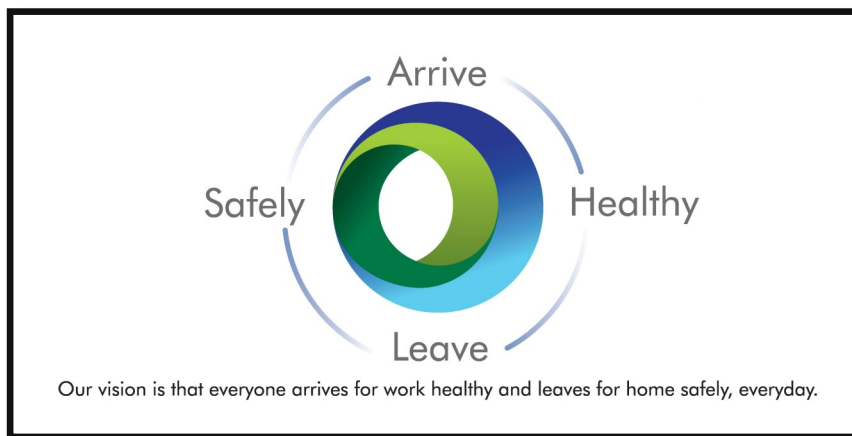
In January 2022, **Global Rail Australia** Track Division were awarded 1 x Turnout to install for our partner Gradco and client Tasrail in Tasmania.

GRA pre-built the turnouts in two days prior to the Cement Australia Shutdown.

During the occupation Gradco carried out all formations works ready for the install of the points.

GRA installed all the new points and new racor lever boxes ahead of time in the occupation.

Our welding teams completed 14 welds and they all passed Non-Destructive Testing (NDT) inspection



Global Rail Australia



Track – Tasrail IIP2 State Wide Defects C509

Global Rail Australia Track were successful in being awarded the Tasrail IIP2 Statewide Defects tender.

The scope of works covered on this project listed is below:

1. Scheduled track defect rectification and associated works;
2. Removal of ultrasonic detected track defects; and
3. Removal of dipped weld
4. Re-railing and re-sleeping.
5. Restressing of 6km of track on the Bell Bay line.

As part of its commitment to a safe and efficient network, TasRail undertakes routine ultrasonic rail testing to identify and prioritise the removal of rail defects.

The initial scope of work for this category is to be read in conjunction with the Rail Defects List provided in Appendix 2 which will be a living document and regularly updated throughout the term of contract.

The initial scope of works include, but is not limited to:

The removal of 369 rail defects on the Bell Bay Line which includes 410 linear metres of re-rail to produce DKA rail for inserts.

Works include the need to replace wooden sleepers with Trak Lok 2 sleepers to allow welds to be within standard.

There is also a quantity of rail defects on the South, Western, Fingal, Melba and Derwent Valley Lines.



With the Tasmania development project well underway, the two main slabs were poured before the Christmas break and the works are on track for a June completion. Stuart Shaw, Site Manager for Tas City Builders, captured the early morning pour perfectly on the second slab completed on 22nd December 2021.





Western Program Alliance (WPA) – WILLIAMSTOWN NORTH STATION – HERITAGE BUILDING REFURBISHMENT

Western Program Alliance, within its Crossing Removal Program at Ferguson Street, has undertaken to refurbish the Heritage Building located at Williamstown North Train Station.

Global Rail Australia (GRA) was entrusted to reinforce the antique structure and install architectural elements to make it operational for MTM (Metro Trains Melbourne) purposes.

PROJECT SCOPE:

- ◆ Strengthening of old structure with steel columns and beams.
- ◆ Construction of new strip footings.
- ◆ Installation of core filled strengthening works, floor beams, wall stiffeners
- ◆ Installation of bondeck slab, reinforcement, concrete and accessories
- ◆ Removal of existing masonry infill
- ◆ Installation of new plywood diaphragms
- ◆ Installation and implementation of earthing and bonding



Global Rail Australia staging program and procurement plan was key to the success of the project. No reports or incidents were raised by the public or client. GRA encountered no industrial relations during this project.

By investing their time and expertise Global Rail Australia have delivered this project on time with no safety concerns.

WPA, being one of the many clients to GRA, have successfully executed this project and continue to deliver more.

MTM – HEATHMONT STATION – LIGHTING AND DISABILITY CAR PARK UPGRADES

As part of the Victorian Government's 2020 Covid-19 Stimulus Package, the proposed '**Better Stations Project**' (*the Project*) aimed to improve the customer amenities at nine locations.

The project objective was to deliver functional improvements to existing metropolitan railway stations, improve accessibility and enhance customer experience at key locations across the network.

GRA was required to supply, construct, dispose and otherwise bring to a state of completion the lighting upgrade in Heathmont Station precinct area and an additional new disability car parking bay.

PROJECT SCOPE:

- Construct 7no. light pole footings and install light poles.
- Supply conduits and install in trench including draw wire/rope.
- Cabling to new and existing poles and connecting to main switch board.
- Remove and dispose 40m² existing asphalt and line marking.
- Re-asphalt 40m² nominated area as per existing.
- Thermoplastic line marking for disability car park bay.



Global Rail Australia
Successfully Executed This Project & Continue To Deliver Further Works
On Behalf Of MTM



Global
Rail
Australia

Project Updates

Melbourne PTV Ran Refresh – Build Services Update – C476

GRA Networks Australia is delighted to have been selected as Telecoms build partner for the award of a contract for Site Make Ready (SMR) work, to swap out old “end of life” Siemens Base Transceiver Station (BTS) hardware and install new Nokia Flexiedge BTS hardware within a new Eltek BTS.

There are 109 No. sites in the program, which will run over the next six months and the cutovers are limited to a 2-hour window either within After The last, Before The First train (ALBF) or under occupation of the line.

The project has reached the milestone of 80% successful cutovers.

Works include:

- Site make ready works (Electrical Upgrade)
- Site make ready works (Installation of New BTS and equipment)
- Installation and commissioning
- Integration and activation
- Decommissioning of legacy equipment
- Site acceptance

An example of two sites which show the challenges faced in this project are;

Nokia – Ringwood Site

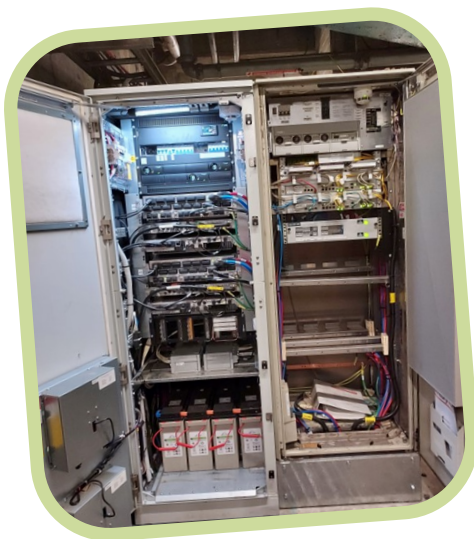
This site was particularly challenging due to its sensitive location of a rail yard with adjacent live rails. Works additionally involved a major electrical upgrade.

After the last, before the first (ALBF) train and all associated safe working requirements.

Nokia – MURL Flagstaff Site

Works additionally involved an extended ALBF hot wrap involving coordination with VicTrack, MTM, Nokia and GRA. ALBF and all associated safe working requirements.

Delivery of equipment via a stairwell and the public concourse.





NOKIA

vodafone

Nokia VHA RAN Refresh Upgrade – C477.19

GRA were contracted on behalf of Nokia, to upgrade the 3G/4G network and install the new 5G network for eJV Vodafone and Optus.

The site was at St Pauls Anglican Church, Prahran.

Accessing the existing antennas and replacing with new antennas and steelwork, were on the external bell tower wall approx. 18m high.

The team were required to install the new steelwork, and antennas from elevating work platform, working in confined spacing within the church bell tower to install all other Vodafone/Optus auxiliary equipment and liaising with the church for specific times.

A new upgrade of mains power was also required for the Church, Vodafone, Optus and Telstra switchboards. A new Group Meter Panel (GMP) 2.25m x 0.35m x 1.99m build was installed and from start to completion was approx. 4 weeks. Due to Covid restrictions and location of equipment, this has been the most challenging upgrade to date.



Global Rail Australia

5 Plane Tree Avenue
Dingley Village
Vic 3172
Australia

+61 (0) 3 9551 0465

Global Rail Australia has proven experience in delivery of the most

exacting projects across a diverse range of service sectors.

Our in-house capabilities, our scale and our supply chain partnerships have allowed Global Rail Australia to deliver complex multi-disciplinary projects that make a positive difference to our clients across the Australian infrastructure industry that we serve.



ESBT KILDUFF TOWER STRENGTHENING WORKS

This was a strategically important project for ESB Telecom which gives them the ability to offer additional capacity on the existing structure in a prime location with minimal disruption to ESB Telecom and their clients network.

For a first in Ireland, **GRA Networks** built a new tower structure around the existing tower which included a new base built on top of the existing plinth.

The new structure consisted of 4 tiers of galvanised steel sections, braced on three sides with angular steel sections.



Foundation Preparation



New Plinth Built Over Existing Base

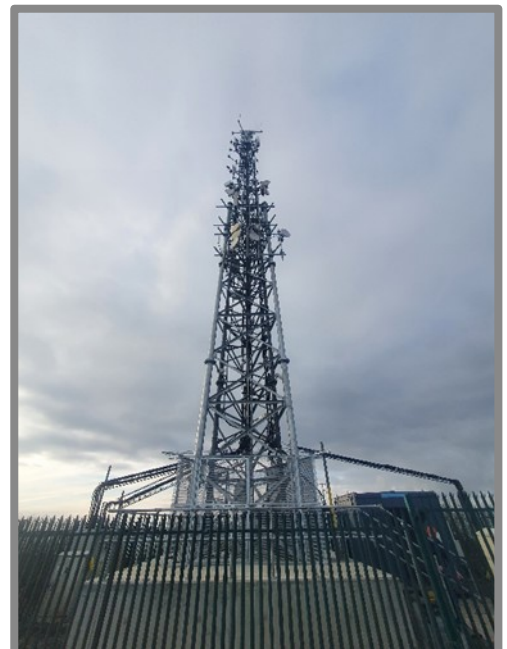
The upper section of the new tower contains 6 new face frames, 2 per side, constructed 90mm circular hollow sections.

As part of this project GRA successfully moved 15 transmission dishes for one of ESBT's clients from the existing structure to the new headframe with minimal disruption to service.

The lower section of the new structure is encased in the new base and is flanked by safety handrails and an new access staircase.

The completed project seen here is a testament to the skillbase across GRA Networks and services in delivering first class infrastructure for ESB Telecom, expanding their footprint at this location and future proofing the capacity of the tower on Kilduff Mountain, Co. Tipperary.

**Thank You Team
For The Excellent Workmanship**



Finished Project

MONOPOLE TOWER AND CIVILS PROJECT COMPLETED IN CO. CORK

Global Rail Services has been commissioned by Irish Rail to complete the installation of telecoms towers and monopoles including associated civils and electrical works to facilitate the roll out of the GSM-R project as part of the GSMR 3A Civils works package 2 on the Dublin to Cork railway line for Irish Rail. 19 No sites in total were completed by Global Rail Services.

As part of this major program of the works, the team at Global Rail Services has recently

completed a complex 15m monopole tower project in Co. Cork.

Due to the limited area on site, a large bulk excavation was completed, which then required an engineering retaining support system to be installed prior to commencement of the mast base location works at this site. This consisted of a large gabion basket structure to retain the existing ground profile prior to the start of the excavation.

The 1.5m excavation was completed adjacent to the rail line under lookout protection, 3m away from the running rail. Global Rail Services installed a 300mm lean mix layer below the base. The steel reinforced foundation cage was installed on site – 3.5m x 3.5m and 1.2m deep.

Peri shutters were used to cast the foundation base. All concrete on site was pumped.

All associated ducting for ESB and fibre works were completed as per specification. Fibre works were completed at night under T111 possessions, road railers and rail dumpers were used to install 2 No precast JB4A manholes and 45m of ducting over existing fibre, which was completed to connect to the Irish Rail network based in NTCC (National Train Control Centre) in Dublin.

Palisade fencing and gates were also completed to create a standalone Telecoms compound.

A crane hard standing area was then constructed to lift the new Monopole into location.

Our rigging team completed installation of the 15-metre monopole, which due to the proximity of the track and the requirements for safe working was installed during a TIII absolute possession of line. This element of the project was completed by sister company **GRA Networks** Ireland (GSMR crews) under the supervision of Michael Ging.

As the team exited the site, they undertook landscaping works, which included planting trees, topsoiling and seeding.

The works were delivered by our team which included David Byrne and Ger Delaney and were expertly organised, planned and coordinated by Senior Project Manager Damien Carroll.



Mission & Vision

Using the best mix of technology and tradition,
The Global Infrastructure Group empowers its workforce to deliver to
our clients the best possible standards of workmanship within the rail
industry at a competitive price.



Global Rail Services



GORMANSTON & DALKEY FOOTBRIDGE

Irish Rail appointed **Global Rail Services** to improve accessibility at Gormanston and Dalkey Station.

The implementation of the accessibility works will improve accessibility for people with mobility impairments in the shortest possible time, taking account of funding constraint.

The main objective in this project is to install a new footbridge and lift in each station.

The works involve the construction of a new accessible passenger footbridge in each station, with 2 no. stairs and 1no. lift, between the existing platforms at Gormanston and Dalkey Railway Station.

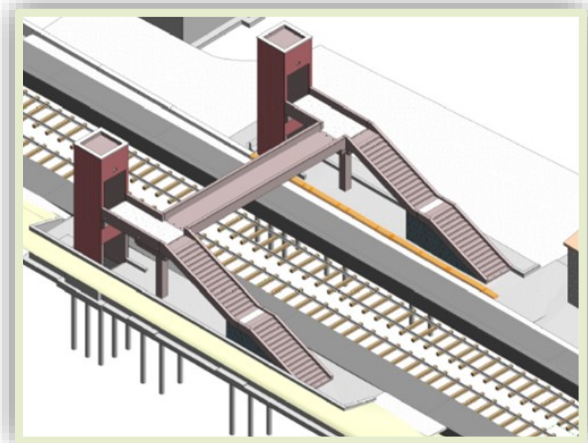
The area of works is in Gormanston Station, the site is located adjacent to existing railway lines and is accessed via the public road, Green Lane off the R132 and Dalkey Station which is accessed via a narrow car park entrance off Sorrento Drive.

Some of the works will need to be completed under T3 Possession, such as the track monitoring, signage, removal of lampposts and installation of the footbridge soil nailing and vegetation removal.

The works are expected to be completed over a nine-month period. The works at Gormanston commenced in November 2021 and works at Dalkey commenced in January 2022.

The traffic management plan has been completed for both stations, however Dalkey has a limited access and it was necessary to install a temporary pedestrian crossing.

All the works were closely coordinated with Irish Rail, DRLCC and Gary Keegan, our Public Liaison Officer



Our vision is that everyone arrives for work healthy and leaves for home safely, everyday.

The temporary works for the installation of the hoardings and excavations have been designed and installed on site and are well under way.

In Gormanston, the first phase of the pilings is complete including dynamic and integrity test with the RC foundations starting imminently.

The lifts, pre-cast concrete works and the structural steel over bridge and canopy works are all in the design co-ordination phase and drawings and specifications are currently being reviewed and approved.

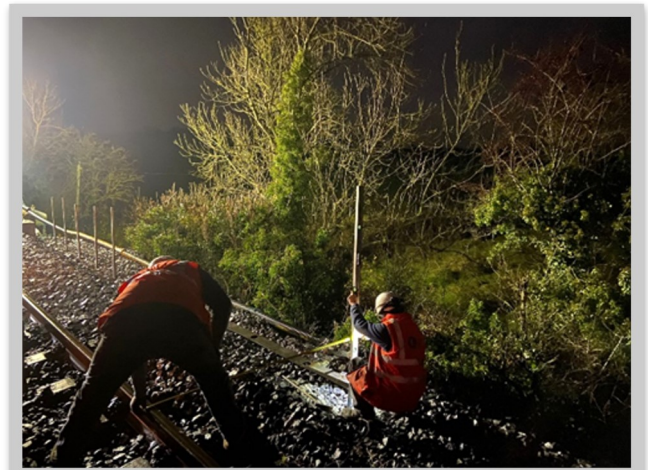
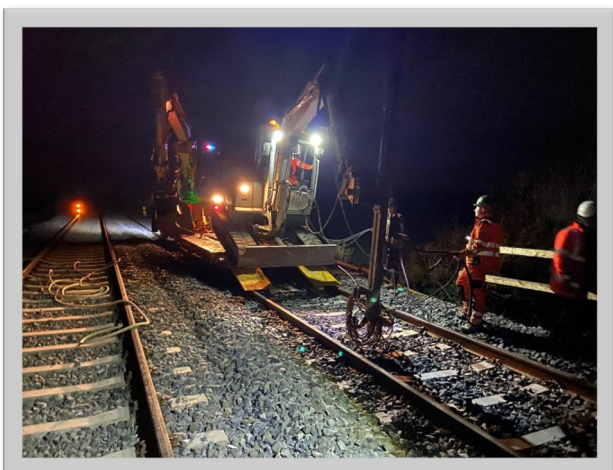




BALLAST RETENTION WORKS

Global Rail Services has completed its ballast containment works contract at Underbridge UBC161 in Portlaoise, for client Iarnród Éireann – successfully meeting the desired program and project outcome. The project was completed under a TIII absolute possession over an intense 4-week period – based out of Kilbricken Depot. The significant ground engineering scope included installation of 77 No Ischebeck Titan mini piles followed by 80m of galvanised ballast retention units and guard rails. During the project Irish Rail implemented a speed restriction, reducing the 100km/hr line down to 50km/hr during the day – enabling one line to be completed at a time. This successful project was a real team effort, with Irish Rail staff working collaboratively with Global Rail Services teams to complete these works on an extremely busy line. Global Rail Services were ably supported by supply chain partners Mannings Engineering, MDH and Breffini/Dixon Bros.

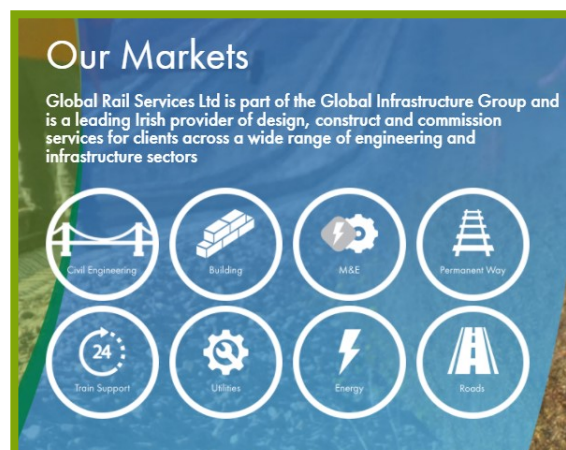
Special thanks also to Stefan Aspatartei and Stelian Poiana who delivered the project from start to finish, helped by Ger Delaney, David Byrne, Ollie Brenan and Mario Baciu.





Global Rail Services, as a flexible and skilful main contractor or subcontractor, with our in-house experienced and skilled resources and specialists, provide full turnkey civil and building works solutions from inception to completion, to both public and private clients as follows:

- Project Management
- PSDP & PSCS
- Utilities Construction – HV, MV & LV Electrical, water, telecoms, drainage & associated works
- Electrical & fibre cable installation & jointing
- Overhead line equipment (OHLE) & associated structures
- Site investigation
- Footpath & carriageway construction
- Street furniture installation
- Traffic & pedestrian management
- Solar PV systems
- Mechanical air to water retrofit upgrades
- EV charging stations
- Testing, commissioning & certification
- Building works
- BCAR duties
- New build & refurbishment
- Commercial & industrial NZEB installations



Global Rail Services

Unit 516a Grants Rise
Greenogue Business Park
Rathcoole, Co Dublin
D24 FH56
Ireland
+353 (0) 1 458 8540

Global Rail Services has proven experience in delivering some of the most exciting projects across a diverse range of service sectors. Our in-house capabilities, our scale and our supply chain partnerships have allowed Global Rail Services to deliver complex multi-disciplinary projects that make a positive difference to our clients, across the Irish infrastructure industry that we serve.



Global Rail Construction Limited has developed a partnership over a number of years with a local charity Herts Young Homeless (hyh). Over the last 12 months, our UK team has raised funds with various campaigns and they were delighted to receive a video of thanks from Herts Young Homeless for their contribution and support. Global Rail Construction is pleased to confirm that Herts Young Homeless will be its chosen partner for 2022.

UK MD, Marco Lombardelli added this message:
"Pleased to see a thank you video received from our chosen charity, Herts Young Homeless, thanking us all at Global Rail Construction Limited for the fantastic support we provided them last year. I would like to take this opportunity to thank each and every one of the team including the wider Global Infrastructure Group and other friends and partners for your amazing support, effort and contributions made, to help this charity provide its key services for vulnerable, young people. We are totally committed in helping and supporting our charity partner further into 2022 and seeing what we can achieve together. Between us all, we are making a huge difference in helping prevent homelessness and supporting vulnerable people with life changing opportunities."

How you helped

Entered a team to our Golf Day in September 2021
 (but due to illness couldn't play on the day)



Organised a day out last summer for 15 service users to Nene Valley Railway

Took part in our Sleepout, raising over £2,900 in sponsorship plus £345 in GiftAid



Held your own event last September and raised over £500 from a raffle



Supported our Big Give campaign by donating £2,000 over £1,700 of which was match funded

Provided lots of fantastic Christmas gifts for our service users



HEALTH CHECKS

Global Rail Construction completed two days of planned health checks on Phases 3&4 of its Feltham Resignalling Scheme. The health checks were undertaken at the Kempton Park compound for all staff including supply chain partners.

We are pleased to report that there was a really encouraging uptake by both permanent staff and supply chain partners.

At GRCL, we believe in raising the bar when it comes to supporting our teams. Workplace health checks have become a mainstay of the business, offering benefits for both us as an employer and to those that we employ. The ability to identify early indications of possible health concerns, we believe encourages each individual to become healthier - improving their overall work ethic.



0800 3 58 48 58
Outside UK: +44 141 271 7179
For online support join vClub at [validium.com](https://www.validium.com)



An Employee Assistance Programme (EAP) is an invaluable tool for any organisation, ensuring that good mental health is promoted and facilitated, as well as minimising the impact of any external distractions on employees' abilities to function or focus while at work. Validium EAPs integrate several clinically proven counselling programmes with an array of specialist work/life services. Provided alongside a unique, proactive approach to account management and promotion, Validium delivers a service that is highly visible within the customer organisation, is trusted by employees, is fully utilised and, most importantly, provides great results for employees.

SafetyFirst

Global Rail Construction Limited's Safety Coach programme has been implemented for over six years. The business now has twelve Safety Coaches and their support and valued input can be demonstrated through fantastic results against our contract HSQE KPI's and the positive safety performance the business has had for many years.

GRCL's leadership and HSQE team decided to reward each of Safety Coach with a personal, top of the range Samsung tablet as a huge thank you for their efforts and continued hard work in keeping our people and business safe.

Every day these coaches support our dedicated internal HSQE team with our day to day compliance requirements across our design and build activities, ensuring our safety values and culture are embedded across our projects in line with our business strategy.

This includes but is not limited to the following:

- * Monthly safety engagement meetings;
- * Implementation of full-time safety coaches deployed on projects to support our staff throughout project delivery;
- * Encouraging Close / Good Call Reporting/Recognition;
- * Periodic Safety Stand-Down Forums;
- * Regular staff Health and Welfare Checks.



THANK YOU



Marius Postolachi
GRS General Operator

On 20th September 2021 an issue, **Good Catch/Near Miss** was reported on an ESB site.

Well done to Marius Postolachi, who's action and follow up on that day may have prevented a serious injury or worse! While involved in the swap of a mini pillar, the ESB proceeded to power down the pillar as per the label on cable feed from the ground mounted sub.

Marius requested that the supply be checked before removal and it was found that the mini pillar was still live.

ESB checked and noticed the incorrect label was on the power feed.

The correct switch out was identified and all works were carried out in a safe and competent manner.



GRCL HSQE Manager, Henry Bonuah (L), presented a **thank you card and voucher to Marc Dundas** (GRCL Supervisor) for intervening and saving a lorry driver who was poorly in his cab at one of our worksites.

When Marc arrived in the morning to resume work he found a lorry parked at the access so he approached the driver only to learn he was very ill. Marc quickly contacted the emergency services and stayed with the driver until help arrived. The emergency services assessed the driver and made a decision to take the driver to the hospital so that they could attend to him.

Following this, the action from Marc was acknowledged as a positive intervention and therefore rewarded by the Senior Leadership Team of the organisation as per our good call process.



Artur Wnuk (R)
GRA – Rigger

Artur Wnuk (R) (GRA Rigger) received his driving award from Gerard Kavanagh (Programme Manager).

This was in recognition of his driving record for August, having record high mileage (double that of others in the top ten) and a very high safety score.

*** Well Done Artur ***

The Global Infrastructure Group of companies, which have been established since 2001, incorporates – **Global Rail Construction Ltd, Global Rail Services Ltd, Global Rail Australia Pty Ltd and GRA Networks** a subsidiary operating in both Ireland and Australia.

“Our USP is without doubt our people and our long-term strategy will ensure we continue to invest in and develop our people to enable us to deliver our customers expectations, in an efficient and consistent manner”.

Celebration



HAPPY BIRTHDAY

A very Happy **50th** Birthday to Dermot O'Brien
(GRS Transport & Logistic Coordinator)
who celebrated his birthday in February.



We all hope you had a wonderful time
celebrating this milestone birthday



HAPPY BIRTHDAY

A very Happy **60th** Birthday to Brian Richards
(GRCL SWL & SMTH Tester)
who celebrated his birthday in January.



We all hope you had a wonderful time
celebrating this milestone birthday



CONGRATULATIONS

Vas Vancea
(GRCL Project Manager)
10 Years Service



Global Rail Construction Ltd (GRCL) were delighted to celebrate the 10 Year Work Anniversary of Vas Vancea (L) (GRCL Project Manager).

Vas has provided his services to GRCL over the course of the last decade and has always provided invaluable guidance and support to our teams.

We would like to take this opportunity to thank Vas for his continued professionalism and commitment to Global Rail Construction.

GRA Victoria Christmas Celebrations 2021

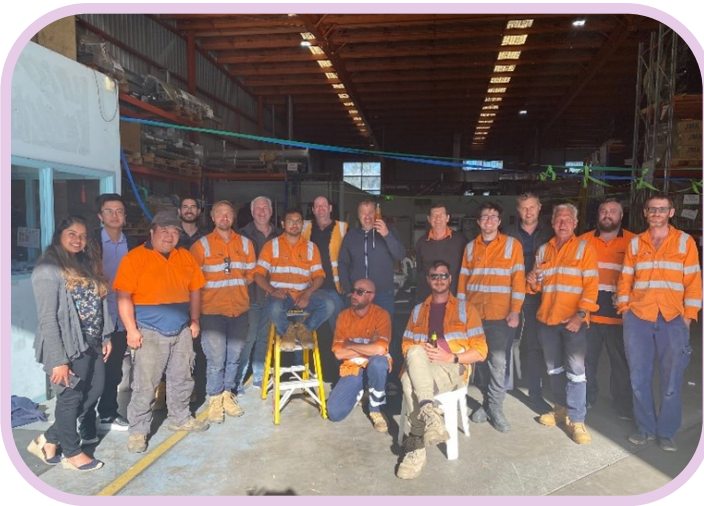
The Victoria GRA team celebrated the Christmas end of year function at the GRA office in the warehouse, where both site and office staff gathered together.

GRA celebrated in the office warehouse due to the uncertainty of Covid still prominent in VIC. After another busy year with projects successfully being wrapped up and completed, the GRA & GRA Networks teams were able to unwind and catchup together over a catered BBQ feast with yummy alcoholic and non-alcoholic beverages.

GRA also organised an in-house raffle with some cool prizes up for grabs.

Luke Murphy, Freedom Truong & Zeyuan Xu were the lucky winners congrats guys!
Thanks again to everyone who was able to attend.

*** GREAT JOB TEAM ***



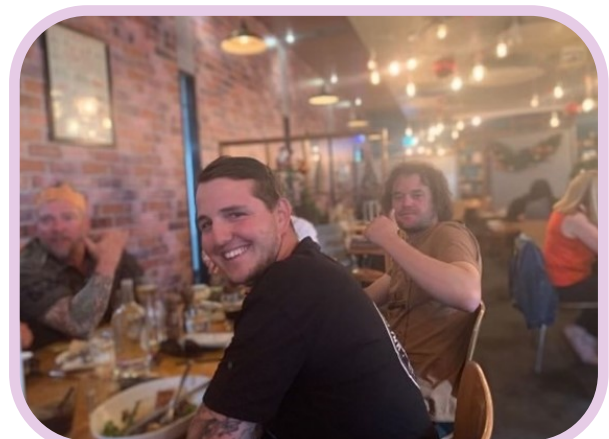
GRA Tasmania Christmas Celebrations

The GRA TAS Team celebrated an end of year Christmas function in TAS at a local restaurant where the local and fly in and fly out crews gathered with Richard Needham (GRA Rail Manager) and Ivan Holloway (GRA CEO) in attendance.

It was a great way to celebrate and end the year together catching up, as the Tasmania borders finally opened up for Ivan & Richard to visit.

THANK YOU

To Our GRA TAS Crew Who Have Done An Outstanding Job In The Year of 2021 & To Be Continued Into 2022



Mitchell Allison—GRA Track TAS Race Car Driver

One of GRA TAS Track teams very own Mitchell Allison is a Race Car driver in Tasmania. Check out this awesome picture featuring his beautiful daughter Amiyah Allison, who is recovering from a serious car crash last year, and the GRA team logo. We wish Mitch all the best with his local competitions, and his daughter Amiyah, a safe & healthy healing journey.



ISO 14001 Surveillance Audit Success For Global Rail Construction



As part of maintaining our ISO: 14001 management system, the organisation undertook its surveillance audit on 9th & 10th November 2021. The purpose of the surveillance audit was to ensure that our EMS is still effective, been successfully implemented and still meet the requirements of the standard. NQA was the external accredited organisation who undertook the assessment. During the audit, samples of evidence were reviewed and evaluated to ensure we are maintaining our EMS. This included our internal audits, training records, incident records and waste management process and documentation as examples. The audit recorded zero non-conformance and zero opportunity for improvements.

**THANK YOU
Everyone**

The Global Infrastructure Group are globally engaged in a whole spectrum of markets, offering solutions specific to our client needs.
The nature of our high-value services means we are involved in complex projects. These projects often require a combination of our activities and services in order to deliver the optimum result for our clients.
Recognising that each industry and sector of activity has its own processes, we offer solutions specific to our clients needs.





Congratulations

to Michael Ging (GRA Rigger) and his wife, Deidra, on the birth of their baby boy.

Welcome to the world Caelan
27.01.22



Congratulations



Nick Turner (GRCL E&P Manager) proposed to his girlfriend Kelly recently and the happy couple are due to marry later this year.

**Congratulations & Best Wishes From
All The Global Family**



TUESDAY MARCH 8, 2022 INTERNATIONAL WOMEN'S DAY

Will you help #BreakTheBias?



The Global Infrastructure Group support International Women's Day 2022 across our worldwide businesses in Australia, Ireland and the UK. We celebrate the achievements and successes of our women in business and provide environments across our operations where equality and diversity are fully supported.



The Main Event

Fundraising for Cancer Research UK

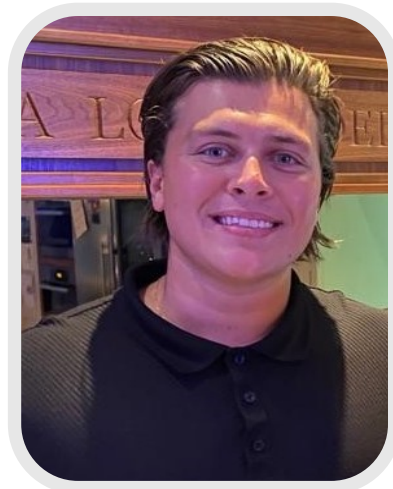
Cancer Research UK are the world's leading cancer charity dedicated to saving lives through research, influence and information. Their pioneering work is changing lives on a global scale.

On Saturday **2nd April 2022**, Alessandro Lombardelli (GRCL Quantity Surveyor) is competing in an Ultra White Collar Boxing event at the Auction House in Luton for charity.

The event is to help raise awareness and hopefully raise much needed funds to support Cancer Research.

Als said *"I appreciate that you all probably sponsor so many causes already.*

However, anything you are able to donate will certainly go a long way for a very good cause. Thank you all for your support."

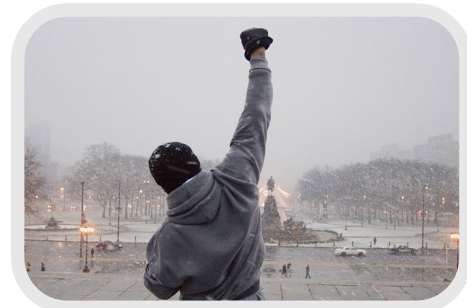


The link to Als' Just Giving page is as follows:

<https://www.justgiving.com/fundraising/alessandro-lombardelli1>

For further details on this event and to buy tickets please visit:

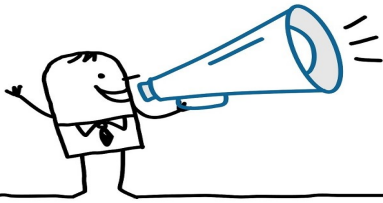
<https://www.ultratickets.co.uk/events/ultra-white-collar-boxing-hemel-hempstead-st-albans-02-04-2022/>



SHARE YOUR NEWS

Tell us what's happening or send us your pictures or videos.

globalnews@grcl.co.uk



Welcome To The Global Family...



Leigh Amer
E&P Engineer



Stuart Nichol
Design Manager



Abdulrazaq Oni
Senior Planning Engineer



Sharon Quinn
Document Controller



Sam Cheeseman
Site Supervisor

The Global Infrastructure Group of companies, which have been established since 2001, incorporates – **Global Rail Construction Ltd, Global Rail Services Ltd, Global Rail Australia Pty Ltd and GRA Networks** a subsidiary operating in both Ireland and Australia.

“Our USP is without doubt our people and our long-term strategy will ensure we continue to invest in and develop our people to enable us to deliver our customers expectations, in an efficient and consistent manner”.



Global
Infrastructure
Group

A Leading Provider Of Turnkey Solutions
For The Rail Industry



Railway
Construction



Civil
Engineering



Telecomms



Multi-Utilities



Power
Networks



General
Construction



Design and
Consultancy

Combining technical and innovative excellence with a
real passion for detail and safe delivery of projects

www.theglobalinfrastructuregroup.com