



GLOBAL NEWS



In This Edition.....

- * Project News**
- * New Starters**
- * Celebrations**
- * A Day In The Life...**



globalnews@grcl.co.uk

Foreword

Welcome to another Global News Magazine. A lot has happened since our last edition and the world has now moved from two years of pandemic lockdowns to an era of inflation and all the challenges that brings. Our group of companies are all well positioned in the Australian, UK and Irish markets and we look forward to meeting our challenges head on with the support of our loyal and experienced team members.

Working well as a team is critical and after a tough two years of COVID-19 you can see in this edition we have had the opportunity to come together and catch up on missed Christmas parties and other get-togethers that were the norm only a couple of years ago. Ivan, our CEO has also had the freedom to jump on a plane and visit the local teams in the UK and Ireland. By all accounts, Ivan was very happy with his UK and Ireland visits and how the teams are gelling together and fulfilling the local client's needs.



In the UK, GRCL are successfully completing early UTX and REB base build works for Alstom on the Cambridge Inner and Outer Re-Signalling & Re-Control project. They have also been working with West Midland Trains at the Soho depot. The Locally Operated Points System (LOPS) project entails switch building renovations to the roof, 3 phase supply and air conditioning installation. Working for Atkins on behalf of Network Rail Wessex route, the GRCL team are involved in the renewal of 4 No level crossings. Long weekend possessions at Rusham and Chertsey were required to complete works ready for commissioning. Finally, the monthly stand down at the Feltham & Wokingham Re-signalling Phase 3 & 4 project took place; *“Back to Basics – the Global Way”* was the meeting theme. The Network Rail Principal Environmental and Social Value Manager, Maria Jarosz, was in attendance and commented how happy she was with the GRCL event and team.

Down in Australia our Global Rail Australia (GRA) team has been busy with Tasrail in Tasmania. The Perth Mill Road level crossing entailed some challenging rail and civil works. A sub-track box culvert complete with significant drainage was completed within a very tight occupation window. Also, an extensive section of track was re-railed complete with capping and ballast through the level crossing. Road pavement was re-profiled. A new client for GRA is Australian Rail Track Corporation (ARTC), a government owned body that operates 8.500 Km of rail network. GRA has just started the Aerial Line Wire Removal Project for ARTC that effectively moves cable from aerial poles to underground assets along the Northeast rail corridor. Significant lengths of Combined Service Routes (CSR) that involve pits, new meter posts and signal boxes achieved via trenching and bores. When CSR routes are complete, power supply cables are pulled into position for connection by ARTC signalling engineers. The project is on schedule. Finally, as part of V/Line's 2021/2022 works plan, GRA are completing a number of track signalling civil projects. A CSR is being created at the Seymour station which brings with it plenty of challenges due to tight working corridor and tough ground conditions.

In Ireland, the Global Rail Service Ltd (GRSL) team have won a number of key framework programs under significant competitive pressure, which have effectively kicked-off in the preceding quarter. Notable among those programs are the “Installation, Testing & Repair of Mechanical Systems and Sub Systems” framework which will run for 5 years and the “GSMR 3A Civils Works Package” which continues our success in building out foundations and compounds for GSMR telecom towers.

GRSL runs a large number of MEP and civils projects in parallel. One of the more notable civils projects in the last quarter was the bridge works at UBB59 in Balbriggan, County Dublin. In this edition this project is shown as an exemplar of both the quality of the work completed by GRSL but also the excellent relationship with the end client Irish Rail.

A third party, Purcell Construction needed to get power and gas to their site development. GRSL task was to complete a long trench under a restricted height rail bridge. Works were carried out under licence to the road owner(s), Irish Rail and Fingal County Council. The Permit only allowed for 5-day completion with a tricky TMP in place. Both the Irish Rail and Fingal County Council engineers sang high praise indeed for the operation and the outcome. Other noteworthy projects, carried out by the telecom department, included emergency 4G/5G site build on an Irish Rail site to support coverage for a Ukrainian refugee camp.

As we transition back to a 'normal' work environment post COVID-19, it's important that we take the opportunity to ensure we meet up every now and then, in an informal environment to let our "hair down" with our work colleagues. I'm glad to share some of the photos of the Irish team catching up in this edition.

On behalf of our senior management team in Australia, UK and Ireland I would like to "Thank You" for the superb effort you put in every day. Remember to Stay Safe out there.

Stephen O'Brien
General Manager
Global Rail Services
Ireland



Passionate

Committed in heart and mind to whole-heartedly embrace our core values and culture, without exception.



People

Growing our organisation from within, promoting and empowering our people, inspiring them to be the best they can be.



Professional

At all times we act with integrity, providing quality service, reliably and responsibly.



Teamwork

Working collaboratively whilst supporting and respecting each other's views.

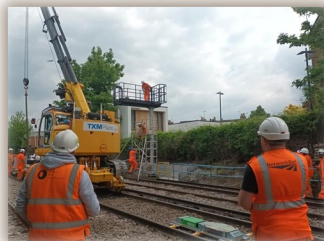


Responsible

To consistently deliver quality, on time, safely and to budget whilst protecting our communities and the environment.



Our **Global Rail Construction** teams, on behalf of esteemed clients Network Rail and Atkins, have been working relentlessly, delivering design and build project works. Our S&T installation works in the four day blockade was completed successfully at the beginning of May, and all works completed to a high standard. Many thanks to the entire team for their continued efforts - it is very much appreciated by all concerned.



Arrive

Healthy

Leave

Safely

Our vision is that everyone arrives for work healthy and leaves for home safely, everyday.



The Global Rail Construction team are currently contracted to deliver early works for long-term client Alstom, on the Cambridge Inner and Outer Re-Signalling & Re-Control Project. This includes completion of 5No UTX's and 4No REB bases. Below are some photos of the Cambridge Station REB being completed with the associated FSP's hardstanding by Project Manager, Vas Vancea and his delivery team.

The Cambridge Re-signalling, Re-lock and Re-control (C3R) project is a condition led renewal. A significant number of level crossings are either renewed or modified by the scheme.



Global Rail Construction

The Global Infrastructure Group are globally engaged in a whole spectrum of markets, offering solutions specific to our client needs.
 The nature of our high-value services means we are involved in complex projects. These projects often require a combination of our activities and services in order to deliver the optimum result for our clients.
 Recognising that each industry and sector of activity has its own processes, we offer solutions specific to our clients needs.





Our **Global Rail Construction** team has been working at Soho Depot on behalf of West Midlands Trains. Following recent successful possession works, the team are now in the final phases of the route works and signal base foundation installation to facilitate the new Locally Operated Points System (LOPS).

These works include internal and external building renovation of an existing depot switchroom to house the new LOPs distribution cabinets, including:

- > New roofing to be carried out under possession and isolations
- > A new 3 phase supply, internal power, lighting and air conditioning to house the new LOPs distribution cabinets
- > Brickwork renovation and re-pointing works



Safety Stand Down

Our Feltham & Wokingham Resignalling Phase 3&4 project held its monthly safety stand down session. With a few months ahead of the project to complete, our HSQE team decided to present *'back to the basics - the Global Way'*. This topic was chosen to refocus the minds of the workforce (GRCL and Supply Chain Partners' staff) on the positive and professional things we do.

Often projects that start very well do not end well because many people take their eyes off the ball; while looking at the end date and programme they often forget the basic safety needs of the project. It was on this note that we considered this topic in order to remind everyone of the good things we have been doing since the early days of the project.

We invited Maria Jarosz, who is the Principal Environmental and Social Value Manager for Network Rail - Southern Capital Delivery, to support us environmentally whilst our GRCL HSQE team delivered the health and safety presentation.

Marco Lombardelli (GRCL MD) said ***"Well done Henry and all the HSQE team for another excellent Safety Stand Down. Many thanks also to Maria for supporting this important event with ourselves. Great work all."***





Global
Rail
Construction

ATKINS

Member of the SNC-Lavalin Group

With detailed planning, integration and teamwork, our **Global Rail Construction (GRCL)** team has completed the signalling & telecoms installation & associated civil construction works for the renewal of 4No level crossings – Camberley, Chertsey, Rusham and Stroude (CCRS) for client Atkins, on behalf of Network Rail Wessex Route.

There were a sequence of crucial weekends which the project team completed leading up to the final commissioning.

Weekend 52 was the decommissioning of Chertsey level crossing where 4No barriers and road traffic lights were replaced for new. Camberley then followed in weekend 1.

Rusham was then completed in weekend 2, the main works involved the breaking out of the existing foundations and the installation of 2No new concrete bases. The new full road barriers were then installed and terminated ready for final commissioning.

Works were all completed within a 52 hour possession.

Weekend 3 was the last weekend of the project, where GRCL assisted Atkins with final testing. As a result, Feltham Phase 2, was successfully commissioned and signed into use on the 18th April 2022 - precisely on time.

The continued dedication and professionalism of the GRCL team was key to the successful delivery to meet a complex programme that had access constraints.



Mental Health Awareness

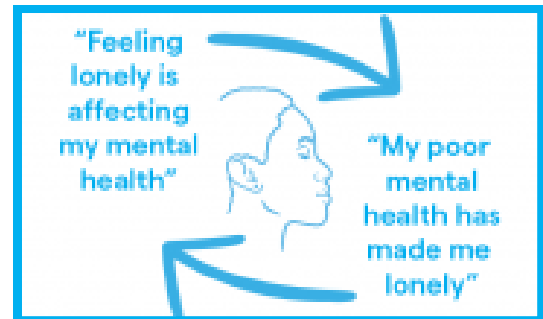
We supported Mental Health Awareness Week UK 09-15th May 2022. This year's campaign was asking people and organisations alike to consider their 'unique contribution' in tackling loneliness, isolation and the barriers to connection.

With our society changing fast and the pandemic given rise to a sense of loneliness and isolation undermining confidence in daily routines, many of us have had far less access to loved ones.

Loneliness affects many of us at one time or another. We know that **loneliness can be both the driver for and a product of poor mental health.**

Our society is changing fast. The pandemic has given rise to a sense of loneliness and isolation undermining confidence in daily routines. In recent times, many of us have had far less access to loved ones.

Tech is enabling healthcare professionals to see more patients without the need to travel, but on the flip side of the coin, convenience and cost efficiencies are driving more and more activities online.



Our workplaces are also changing. With many adapting to home and hybrid working, we need to embrace this change while building and maintaining meaningful connections with our colleagues.



Talking about loneliness at work

When asked about the **factors that could prevent people from talking about loneliness at work**, 53% agreed 'Lack of own time or capacity within work hours to discuss this with others', while 50% agreed that 'a culture at work which does not actively encourage people to talk about mental health' and 'feeling that my line manager or senior leader does not have time to meet with me, or won't be able to

support me' as key reasons that could prevent them from opening up about the topic at work.

Let's Connect! Together, we can:

- Raise awareness of the links between poor mental health and loneliness
- Provide safe and welcoming spaces to talk and support each other
- Upskill people to use technology and keep in touch with loved ones
- Create an army of volunteers to support lonely people



0800 3 58 48 58

Outside UK: +44 141 271 7179

For online support join vClub at [validium.com](https://www.validium.com)



An Employee Assistance Programme (EAP) is an invaluable tool for any organisation, ensuring that good mental health is promoted and facilitated, as well as minimising the impact of any external distractions on employees' abilities to function or focus while at work.

Validium EAPs integrate several clinically proven counselling programmes with an array of specialist work/life services. Provided alongside a unique, proactive approach to account management and promotion,

Validium delivers a service that is highly visible within the customer organisation, is trusted by employees, is fully utilised and, most importantly, provides great results for employees.



In November 2021, **Global Rail Australia** Track Division were awarded the upgrade of Perth Mill Road level crossing for our client Tasrail in Tasmania.

The scope of work consisted of rail and civil works.

- Install 600mm x 900mm box culvert under the track and 200m of drainage
- Re-rail 160 meter of track
- Upgrade 38 meter of new capping and ballast through the level crossing
- Install 4 x glued insulated rail joints
- Re profile and asphalt 125m of road pavement.



The GRA project team planned all the works in conjunction with Tasrail.

All council permits and track occupations were organised for the road closure from 26th February until 28th February 2022

The GRA rail and civil teams worked together and installed the box culvert in a 10hr window between trains and this led into the occupation.

All track and road works were finished on time with no incidents or delays.



**Thank You Team
For The Excellent Workmanship**

The Global Infrastructure Group of companies, which have been established since 2001, incorporates – **Global Rail Construction Ltd, Global Rail Services Ltd, Global Rail Australia Pty Ltd and GRA Networks** a subsidiary operating in both Ireland and Australia.

“Our USP is without doubt our people and our long-term strategy will ensure we continue to invest in and develop our people to enable us to deliver our customers expectations, in an efficient and consistent manner”.



ARTC- Aerial Line Wire Removal Kilmore East

Global Rail Australia (GRA) has started work for Australian Rail Track Corporation (ARTC). The Australian Rail Track Corporation is an Australian Government-owned statutory corporation. It operates one of the largest rail networks in the nation spanning 8,500km across five states, 39 worksites and more than 50 First Nations.

The Aerial Line Wire Removal Project seeks to remove reliance on the aerial pole lines across the North East rail corridor. Continued wire theft is a driving factor in reliability issues experienced within the North East Rail Line (NERL) corridor, and the cause of significant cost.

As part of the scope of works GRA are installing Combined Service Routes (CSR) routes, Pits and underground bores over five locations within the rail corridor in Wallan and Kilmore East. There is approx. 2Km of CSR routes to be installed by trenching and over 1km of underground bores. Once CSR routes are complete with pits, new meter posts and signal boxes installed, we will then pull power supply cable to pits to into the location case for connection by ARTC signalling engineers.





Global
Rail
Australia



V/Line – Seymour Crossover Cable Route Construction

As part of V/Line’s 21/22 Annual Works Plan there are several track projects which require signalling construction support.

GRA have started work for V/line at Seymour Station constructing a new 1km CSR route within the rail corridor. Approximately 300 metres of the route has been completed to date with all associated tie in pits and smaller conduit routes installed.

This was the most challenging section of the project due to the tight working corridor and existing ground conditions.

*** Thank You All For Your Hard Work ***



Global Rail Australia

5 Plane Tree Avenue
Dingley Village
Vic 3172
Australia
+61 (0) 3 9551 0465

Global Rail Australia has proven experience in delivery of the most exacting projects across a diverse range of service sectors.

Our in-house capabilities, our scale and our supply chain partnerships have allowed Global Rail Australia to deliver complex multi-disciplinary projects that make a positive difference to our clients across the Australian infrastructure industry that we serve.

A DAY IN THE LIFE OF

In this issue, we meet Anthony Redmond, Electrical Operations Manager for Global Rail Services.

We find out a bit more about him.....

What are you passionate about?

Family and sport

What personal achievements are you most proud of?

Beating Donal Kelly at Golf.....several times..

What are you most grateful for?

My wife and two beautiful girls

What are the most important things to you in life?

My family and friends

If you have one week left to live, what would you do?

Go on holiday with the kids.

What are the biggest things you've learned in life to date?

The days can be long, but the years are short.

What advice would you give to your younger self?

Believe half of what you see and none of what you hear.

What are your biggest goals and dreams?

To live a healthy life and see my kids grow up safely.

What do you want to achieve in 1 year?

Complete the building of our new home

What is your biggest frustration right now? What can you do about it?

The War in Ukraine, Not much only donate money and pray.

If you had a million dollars, what would you do with it?

Charity, Mercedes!!! And invest for the future.

Do you love your job? Why or why not?

I do like my job, it gives me some challenges to deal with daily and I get good satisfaction from solving these problems. I also work with a great bunch of people.

What do you fear most in life? Why?

Not living it enough, its easy to get too busy to enjoy life properly. Its important to spend as much time as possible with people important to you.

Who inspires you the most?

My parents; they are always there through good and bad and have always provided for all of us.

What kind of person do you enjoy spending time with?

Someone who can have a laugh and can take, and give, a bit of banter.





During the construction of a new nursing home facility adjacent to UBB59 on Lambreecher Road in Balbriggan, County Dublin, which was being built by Purcell Construction, they were having difficulty in servicing their development with power and gas. Following consultation between Purcell and Irish Rail, the solution identified and agreed was a 31m trench under the centre line of 3.7m restricted height bridge.

Due to the significant experience **Global Rail Services** have working with Irish Rail and as Irish Rail own the road under UBB59, we were tasked with excavating the trench under the bridge and extending it to outside the Irish Rail property line on both the east and western side of UBB59. As the road is owned by Irish Rail, the works could only be conducted under licence agreement between **Global Rail Services** and Irish Rail, which in itself a significant increase in insurance cover as the open cut trench works were conducted directly under the live northern commuter line .

Another stakeholder that had to be engaged was the local authority, Fingal County Council, as they are the owner of the public road on both sides of the bridge outside of the Irish Rail property line. This required a road closure application and agreement from Fingal County Council along with a T2 road opening licence. As the bridge is only single vehicle width, the road closure was necessary to allow the excavation and reinstatement to take place, the permitted hours of work were 8am to 6pm after which time the road had to be reopened to the public as there were a number of recreational sports clubs in the vicinity. During the operational hours of the road closure, pedestrian access to the beach and recreational facilities had to be maintained by implementing an approved TMP, to divert pedestrians around the works.

The road closure was granted for Monday to Friday between 8am and 6pm for 1 week only which meant the scope of works had to be fully completed in 5 days.

Global Rail Services scope of works involved:

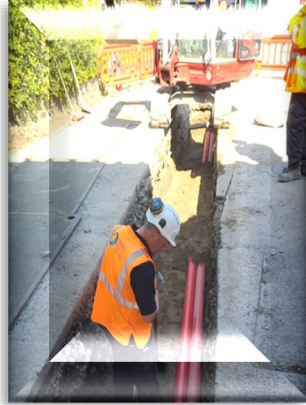
- Set up and maintenance of traffic and pedestrian management
- Pre works topographical and photographic survey of the road and bridge
- Saw cut of trench to design drawing cross section 20-136-59-11
- Excavate 31m of trench for off site disposal to licenced facility on completion
- Placement of road plates over trench at end of each day to allow reopening of road
- Sand blinding to trench formation
- Installation of sand blinding to trench formation
- Install 3nr ESB approved 125mm ducts into excavated and blinded trench
- Site welding of 5nr 6m long heavy wall 75mm steel pipes before placement in to trench
- Place sand blinding and warning tape over the installed ESB and Gas Networks Ireland Circuits
- Backfill and compact trench with C12/15 lean mix to within 180mm of surface level
- Reinstatement trench with 180mm depth of AC20 DBM to SD4 spec and T2 licence
- Plane of 40mm of full carriageway width
- Spray bond coat to planed out road surface and sealing of vertical joints prior to placement of new wearing course
- Installation of council specified SMA14 PMB
- Surrounding of ironworks with mastic asphalt and 60 PSV chips
- Installation of double yellow line marking



Comhairle Contae
Fhine Gall
Fingal County
Council



A serious effort was put in by all the project team to ensure the excavation and road reinstatement was completed within the 5-day permitted timeline. High praise was received from the Irish Rail specialist Engineer and Fingal County Council Engineer, who both said that ***“it was a pleasure to work with Global Rail Services on this project as it was meticulously planned and well executed with no issues”*** and both parties were very pleased with the standard of works delivered.



GLOBAL RAIL SERVICES Horse Race Day Out

Global Rail Services had a family day out in April at the Punchestown Racecourse Festival. Everyone enjoyed a lovely meal, great company, some wins, some losses, and live music to end the day.

Punchestown Racecourse is located in the parish of Eadestown, between the R410 and R411 regional roads near Naas, County Kildare, in Ireland. It is known as the home of Irish Jumps Racing and plays host to the annual Punchestown Irish National Hunt Festival. The racecourse itself is right-handed with an undulating hurdle and steeplechase track. The hurdle course is one mile six furlongs in distance while the chase course is 2 miles. Punchestown Racecourse also has the only cross country banks course in Ireland.

A few photos of the day below.....





CONGRATULATIONS

James Sykes (GRCL Project Manager) 10 Years Service

Global Rail Construction Ltd (GRCL) were delighted to celebrate the 10 Year Work Anniversary of GRCL Project Manager, James Sykes. James was our very first apprentice and during the last decade has proved to be a very loyal, hardworking individual. His efforts have been recognised through ongoing training and development and 10 years on, he is now one of Global Rail Construction Limited's Project Managers. James was recently instrumental in the safe and successful delivery of 4 No Level Crossings in the Wessex area, on behalf of client, Atkins.

Well Done James, We Are All Very Proud Of You

Look who popped into the offices of Global Rail Construction

The 'dream team' working hard together.

Ivan Holloway, GRA CEO, was finally able to travel back to the UK and Ireland with border restrictions easing, to visit the Global Rail Services and Construction families. It was lovely to see Ivan after all these years We hope you had a nice time visiting the Global Families.



Our profile

The Global Infrastructure Group is an international; leading specialist organisation, focussing on construction, signalling, telecoms, mechanical and electrical design and build solutions within a number of core industries.



GLOBAL RAIL SERVICES Golf Day



Global Rail Services enjoyed a Golf Day in April at the beautiful Kilkea Golf Club in County Kildare. Kilkea Golf Course has been developed in a magnificent setting, beneath the shadows of a 12th century Castle (the oldest continuously inhabited castle in Ireland). It allows the splendour of the Castle to be viewed from every fairway.

In constructing this championship course, the designers have cleverly used the River Griese as a natural hazard flowing through the Castle grounds and estate. The combination of this water and a variety of other hazards and interesting greens ensures the golfer playing the course has a considered challenge on his or her hands. You will encounter the River at almost every hole. Two lakes have also been included in the course design, adding to the overall difficulty of the challenge of this royal and ancient game.



Anthony Kelly (R) accepting first prize from Stephen O'Brien



Rita Sheedy (R) accepting second prize from Stephen O'Brien



Shane Miley (L) accepting the coveted 'Wooden Spoon' prize for third place from Stephen O'Brien

The team that won on the day was Anthony Kelly's team who included Gavin Keaton, James Doogue and Emmett O'Keeffe.

In second place was Rita Sheedy's team who included Donal Kelly, Steffin Florin and Stephen O'Brien.

Last, but not least, was Shane Miley's team, who received the coveted **Wooden Spoon** for their prize, the team included Ryan Cullen, Richy Dunne and Dean Carthy.

A GREAT DAY WAS ENJOYED BY ALL

Global Rail Services

Unit 516a Grants Rise
Greenogue Business Park
Rathcoole, Co Dublin
D24 FH56
Ireland

+353 (0) 1 458 8540

Global Rail Services has proven experience in delivering some of the most exciting projects across a diverse range of service sectors.

Our in-house capabilities, our scale and our supply chain partnerships have allowed Global Rail Services to deliver complex multi-disciplinary projects that make a positive difference to our clients, across the Irish infrastructure industry that we serve.



“Our mission is focused on providing mental health awareness and suicide prevention programmes to schools and colleges where our facilitators work directly with students to promote awareness, provide skills and advice, and support teachers and staff as needed.

We provide a wide range of online resources including online training and youth self-harm and suicide publications; we operate a FreeText service where people in need of crisis information can text our information service free of charge; we provide funding for immediate access to crisis counselling for at-risk teenagers.

Our Facilitators and Volunteers also arrange and provide outreach events and awareness campaigns around the country for parents, community organisations and voluntary groups. We also provide services to youth organisations, youth diversion projects, clubs and sports organisations upon request.”

Suicide is the
SECOND
leading cause of
death amongst
15-29
year olds



SKYDIVE FOR LIFE 2022

Youth Suicide Prevention Ireland (YSPI) has been working for over 10 years to provide free mental health and suicide prevention education and training services to schools and colleges around Ireland. According to the World Health Organisation's (WHO) 2016 report suicide is the 2nd highest cause of death amongst young people across the World. Sadly Ireland is not spared from this problem which affects almost every community in the country.

In the European Union during 2015, according to Eurostat, there were approximately 56,000 reported deaths by suicide making it one of the leading causes of death. Males accounted for 43,000 of those deaths or 76%.

According to research by UNICEF published in 2017 **Ireland has the fourth highest teen suicide rate in the EU/OECD region.** The organisation's latest report card on well-being of young people found that Ireland's suicide rate amongst adolescents aged 15 to 19 was 10.3 per 100,000 population and ranks well above the national country average of 6.1 per 100,000.

Schools and teachers are so important to the development of personality, social skills and self-worth in a young person. The WHO states that among the six most important ways of reducing suicide rates is through **School-based Interventions.**

The *Four Steps to Help Programme* that is facilitated to schools has been running for 6 years now and in that time they have worked with 282 schools across the country to provide a comprehensive mental health awareness resource for teachers and students.

This summer **Niall Taaffe (GRCL Senior Project Manager)** shall be completing a sponsored Skydive in aid of Youth Suicide Prevention Ireland.

Niall decided to complete this skydive as this charity is very close to his heart.

They have a program where they attend schools and teach teenagers how to manage stress and anxiety in their lives, help them to open up and talk before things get on top of them.

They also operate a 24hour help line, giving kids someone to talk to and offer support when they are feeling down.

Niall said *“I know things are tight at the minute but every little helps and if you could spare even just a few pounds it would be greatly appreciated.”*

The Link To The Sponsorship Page Is Below

<https://skydive.yspi.ie/nialлтаaffe>



SAFETY & HEALTH EXPO

We ensure we keep up to date with all the Health & Safety latest information of the industry. To assist with this Nicola Arnett, GRCL Competency and Resource Co-ordinator, attended the Safety & Health Expo in the ExCel centre in London on 17th May.

As the UK's largest dedicated health and safety event, Safety & Health Expo welcomes thousands of health and safety professionals to stay on top of legislation and best practice, experience the latest technological solutions, and hear from industry trailblazers

Some topics discussed were:

- Harnessing the power of social sustainability
- RoSPA Awards Excellence Panel: "What's Going Well?"
- How To Expect The Unexpected: Mental Health Crises Recognition
- Stress risk assessments at work



AMAZING ACHIEVEMENT



GRCL Quantity Surveyor, Alessandro Lombardelli, has personally **raised over £3k for cancer research**. On 2nd April 2022, Als competed in an Ultra White Collar Boxing event at the Berkhamsted Leisure Centre and won his bout too!

All at The Global Infrastructure Group would just like to say we are so very proud of everything you have done and for being one of the top two fundraisers for the event too!



*** WELL DONE ALS ***



CONGRATULATIONS

to Barry (GRCL Project Manager) & Melissa Smith who welcomed their beautiful baby girl, Grace, into their family. All are keeping well and enjoying family life.



CONGRATULATIONS

to Robert (GRA Technical Manager) & Nuala Reid who welcomed their beautiful baby girl, Chloe, into their family. All are keeping well and enjoying family life.

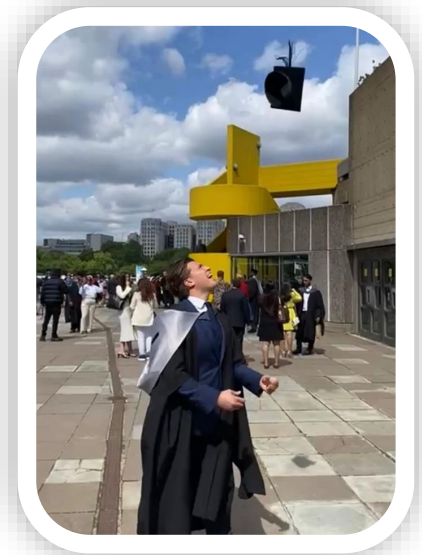
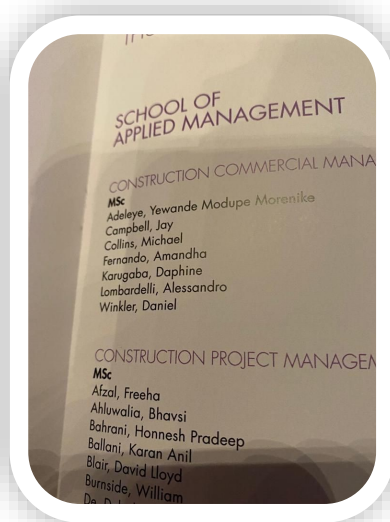


HAPPY GRADUATION

GRCL Quantity Surveyor, Alessandro Lombardelli, has graduated and received his MSc in Construction Commercial Management.

Congratulations to him and to his family. What an achievement!

We are all immensely proud of you



Supporting Vulnerable People in Hertfordshire

Global Rail Construction Limited (GRCL) team made a donation to our local charity partner Herts Young Homeless (HYH) in time for Easter. Caroline Neill (HYH Head of Fundraising & Communications), received the goods and said ***“Thank you so much to everyone at GRCL for their kind support once again”*** Some of the donations included Easter eggs, toiletries, bottled water and notepads.



Thank You GRCL Family For Your Support



HYH hosted a great quiz evening which included fish supper, sweet treats and drinks. Global Rail Construction rounded up three teams and came together for a night of fun.

There was also a chance to win some great prizes in the raffle. Even though GRCL had three teams, unfortunately, they did not win the overall quiz. However, a fun family evening was had by all.

Hyh were very grateful for our attendance and said the following, ***“I just wanted to say a huge thank you for coming to our quiz night, I hope you enjoyed the evening as much as we did. It was lovely to see so many of you from Global Rail, the continued support we receive from you is so greatly appreciated. Without the support from people like you our work would not be possible, all the money raised will make a big difference to the lives of vulnerable young people in Hertfordshire and their families.”***

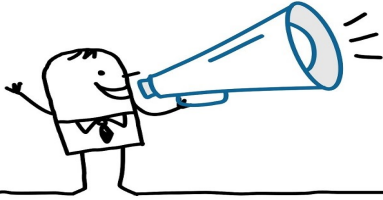
THANK YOU ALL FOR MAKING THE EFFORT ATTENDING THIS EVENT



SHARE YOUR NEWS

Tell us what's happening or send us your pictures or videos.

globalnews@grcl.co.uk



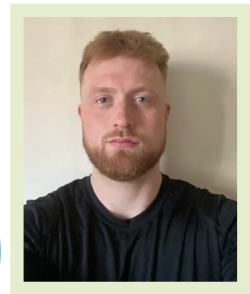
Welcome To The Global Family...



Kunjal Vyas
Telecommunications
Tech



Murali Krishnagali
Civil Intern



James Keith
Telecommunications
Rigger



Muhammad Naseer
Procurement & Logistics
Assistant



Liam Perry
Resource Manager



Nick Thomas
QSE Advisor

The Global Infrastructure Group of companies, which have been established since 2001, incorporates – **Global Rail Construction Ltd, Global Rail Services Ltd, Global Rail Australia Pty Ltd and GRA Networks** a subsidiary operating in both Ireland and Australia.

“Our USP is without doubt our people and our long-term strategy will ensure we continue to invest in and develop our people to enable us to deliver our customers expectations, in an efficient and consistent manner”.

The Global Infrastructure Group’s vision is to be the leading infrastructure company in the sectors we operate, benefiting the communities we serve, the people we employ, and our investors.



Global
Infrastructure
Group

A Leading Provider Of Turnkey Solutions
For The Rail Industry



Railway
Construction



Civil
Engineering



Telecomms



Multi-Utilities



Power
Networks



General
Construction



Design and
Consultancy

Combining technical and innovative excellence with a
real passion for detail and safe delivery of projects

www.theglobalinfrastructuregroup.com