



GLOBAL NEWS

In This Edition.....

- * **Project News**
- * **New Starters**
- * **Celebrations**
- * **A Day In The Life...**



globalnews@grcl.co.uk

Foreword

Welcome to another edition of the Global News Magazine, and I am sure you will all agree that this publication provides valuable updates to the Global Infrastructure Group and is a fantastic mechanism by which the different organisations can keep up to date with what is going on across the GIG Family.

It is evident from reading the updates from across the group in this edition that our project teams are involved in the delivery of some truly exceptional works. All being delivered across various climates, demanding environments and not to mention time zones!

This is a testimony to our behaviours, experience and in particular, our people who support and continue to enhance our service delivery across the group.

Whilst enjoying our various successes there is always a need to continue improving our business and our people so that we will always be considered for key opportunities and become a partner of choice to our clients.

As a group, we believe that it is vital to continue to invest in and develop our staff to enable us to deliver tomorrows expectations, today. Global Infrastructure Group seeks to empower its people to grow, develop and achieve their full potential whilst providing the platform and support to enable this growth potential. We take our responsibilities seriously and have always operated a policy that incorporates a programme of continuous improvement and on-going staff education and development.

I am pleased to see that our Apprenticeship and on-going staff education programmes are going from strength to strength and this investment will continue as we seek to develop the next group of young professionals into the business. These programmes cannot be overstated in their importance to the future of the Group and it is very satisfying to see how a number of our staff that have been through these schemes are now an integral and influential part of our Project Delivery Teams across the whole business.

Of course, none of the above and the success that the Company has experienced to date could be fully appreciated without the full support, hard work and commitment of our staff, supply chain and partners who often face difficult challenges, work through adverse weather conditions whilst often sacrificing time with their families to ensure our business objectives are delivered professionally, safely and in a consistent manner.

We are particularly proud of our history to date and in particular how our wider team continues to execute our objectives and responsibilities in such a positive, pro-active and inclusive way. This is real testimony of our commitment to our core principles and culture enhanced by working together and with others to achieve our defined objectives.

It is vitally important that we as the wider GIG family remember that each day our staff are working in places where the effects of climate change have an immediate impact on our working environment, whether this be the effects of the bush fires in Australia or the storms and droughts recently experienced in parts of the UK. As a business we must constantly challenge and review our processes and working practices in order to reduce our impact on climate change and this is more important now than it has ever been.

We are now going into a particularly busy period across the group both in terms of tendering opportunities and on secured projects and this is where historically we are able to excel as a business as we work collaboratively as part of a greater team in a responsible, passionate and professional manner to collectively deliver a first class service to our clients.

Thanks to you all for your commitment, determination and dedication across the whole Group and as a result we are going from strength to strength at a time when we are looking to strengthen our discipline delivery capability.

Hope you enjoy the read



Jim Cuell
Commercial Director



Global Rail Construction & Global Rail Services Celebrated 21 Years In Business

On the 17th August we celebrated our 21st anniversary.

Here is a message from Marco Lombardelli, our Managing Director.

"Today we are celebrating 21 years of Global Rail Construction (UK) and Global Rail Services (Ireland) and Ivan and I would personally like to thank each and every one of you for all your hard work and efforts and for being part of our company's success over the years. We greatly appreciate and value your hard work.

Thank you for being with us and helping us grow.

We are also grateful for the many amazing friendships and bonds that have been created throughout the business.

We would like to thank you all, no matter what role you hold, for taking us to a whole new level with all the successes over all these years.

Thank you, thank you, thank you as we couldn't do it without you."



Passionate

Committed in heart and mind to whole-heartedly embrace our core values and culture, without exception.



People

Growing our organisation from within, promoting and empowering our people, inspiring them to be the best they can be.



Professional

At all times we act with integrity, providing quality service, reliably and responsibly.



Teamwork

Working collaboratively whilst supporting and respecting each other's views.



Responsible

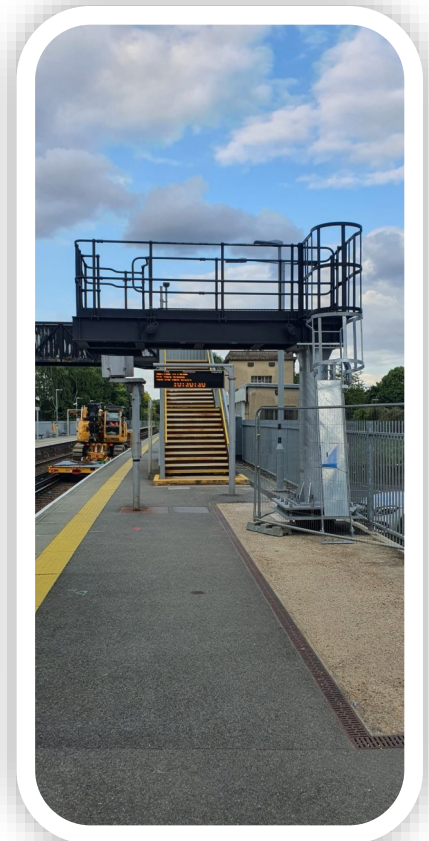
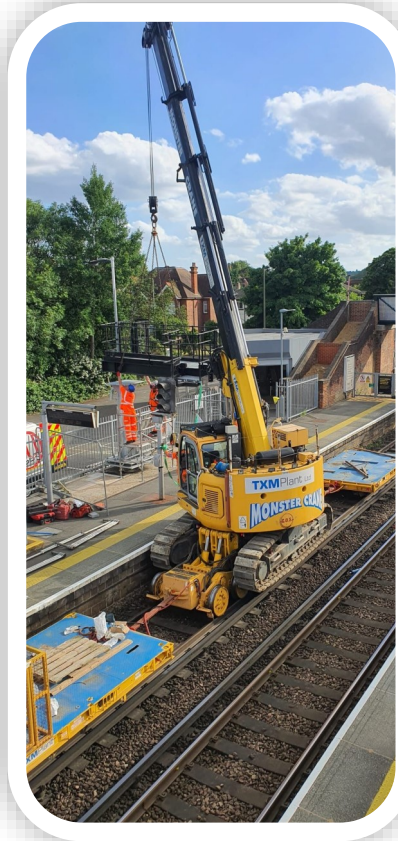
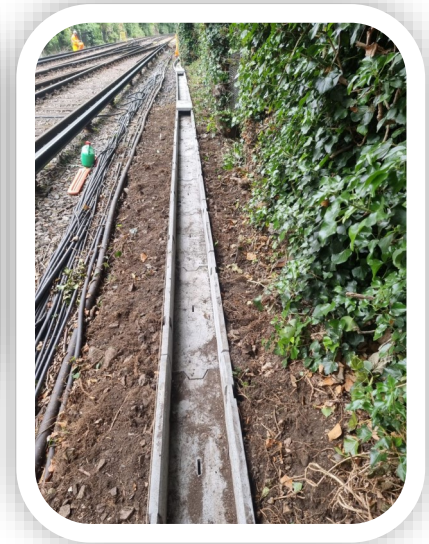
To consistently deliver quality, on time, safely and to budget whilst protecting our communities and the environment.

Global Rail Construction



Global Rail Construction successfully completed their design and build rail civil engineering works including materials deliveries and lay down preparation areas for future works on its Feltham Resignalling Project. Images below show some of the works completed and include, platform duct routes installed at Staines and Feltham, a number of signal structures erected and troughing routes laid. We received great feedback from our client, Network Rail, on the excellent quality and workmanship from our teams.

Global Rail Construction





ATKINS

Member of the SNC-Lavalin Group

Working collaboratively with our valued client, Atkins Global, our UK multi-disciplinary signalling, civil and electrical delivery teams successfully completed a significant volume of rail system works on the Feltham to Wokingham Resignalling Project.

During a 52hr railway possession, 2No PSPs at Windsor & Eton and Wraybury were successfully installed utilising both road and rail crane plant. In addition, 26No signals, together with a large number of Point Cables, Axle Counters, AWS and TPWS fitments were installed to maintain the current Phase 3&4 signalling installation programme.

Our Electrical teams also successfully installed and tested a number of 650v cable joints. Weeks of detailed planning allowed the teams to overcome several logistical challenges, particularly when physically installing the PSP buildings at the commencement of the possession on the Friday night.

This provided the basis for a very safe, successful and productive weekend.

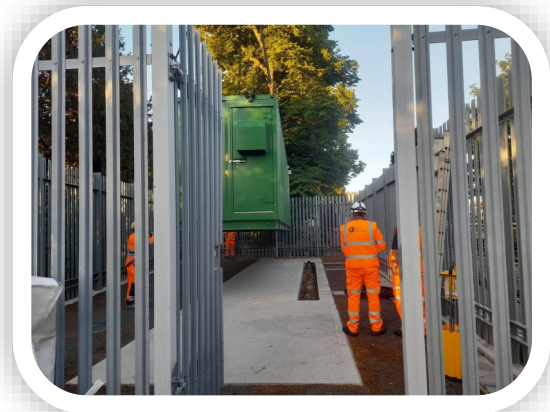
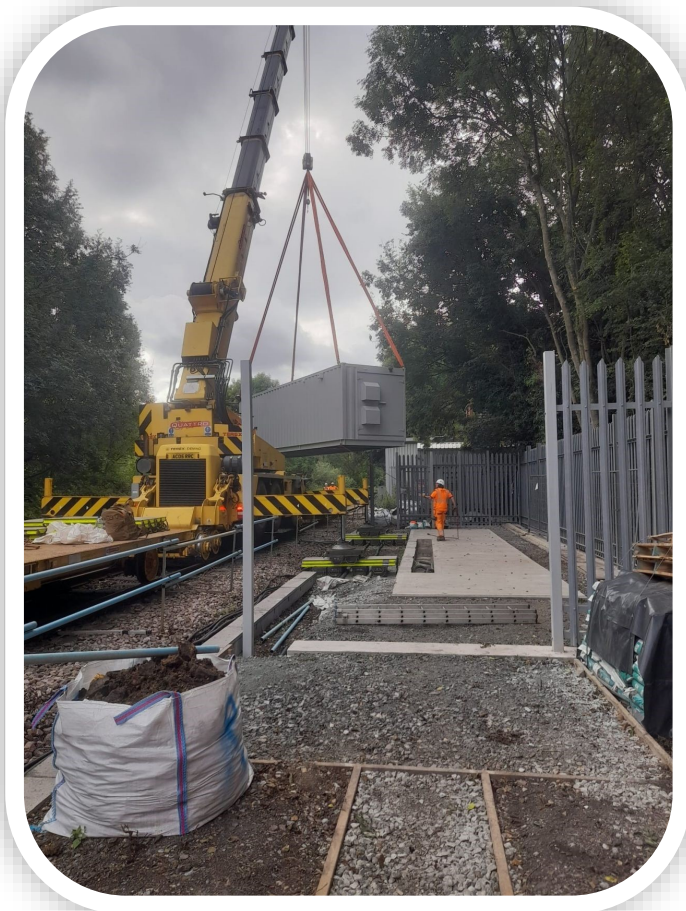
The next stage of planning is now progressing for several, significant challenges that lie ahead. We look forward to continuing to work collaboratively with Atkins Global, Network Rail and our delivery partners to develop safe and efficient solutions.

THANK YOU

Barry Smith, Project Manager

&

Our Multi-Disciplinary Teams



South Harrow TfL Contract Award

Our UK team has been awarded a fully managed, turnkey M&E design and installation project for Transport for London (TfL) at South Harrow Depot. The scope of works consists of the following items:

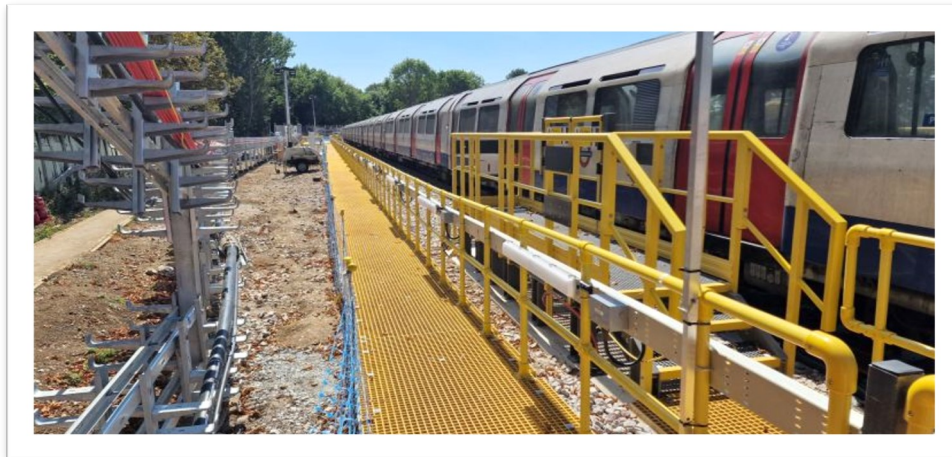
- LV DNO power distribution from South Harrow Station E4 Switch room to South Harrow Sidings LVAC panel
- Provision of containment within Sidings boundary to route the LU power supply from Sudbury Hill to South Harrow Sidings LVAC panel at the later stage (Power supply design by LU Power Projects team)
- Design, test and commission of LVAC panel which comprises of a section of panel from DNO distribution that provides power to Points Heating distribution; and a section of panel with Auto Transfer Switch arrangement with dual supplies from DNO and LU to feed the Points Motors power distribution Lighting Kiosk and existing Comms 6kVA UPS for CCTV load
- 2No IMD (Insulation monitoring device) for isolation transformers shall have power supply from local DB via 3 phase 6A MCB
- Design of On Train Control (OTC) PSU unit's supply as per Communication specification (UIP3230-TFL-COM-P094-DRG-CO-00001).
- Design of lighting kiosk which comprises of lighting DB, lighting contactor panel and override push button station
- Design, test, and commission lighting control panel
- LV Cabling and Containment
- Effective sustainable lighting to comply with S1066 and compliant with ECA directive
- Emergency lighting to comply with S1066 and BS5266 – With integral battery backup within luminaires
- Lighting Controls – Photocell control at central location with override push button station on timer controls at central Lighting Kiosk location and remote push button station at 3 locations as shown on the design drawings
- 230 / 110V combined transformer 110V Socket at LVAC Kiosk location for maintenance tools
- Earthing and Bonding
- Liaising with supplier for LVAC panel, lighting control and isolation transformer
- Surge suppression devices for the panels including all the distribution boards
- Testing and commissioning for all the installed assets

South Harrow Sidings is being remodelled as part of the Deep Tube Upgrade Programme (DTUP), Piccadilly Line Upgrade Project (PLU), from 6 No. to 12 No. siding roads. To accommodate the revised stabling capacity and associated remodelling requirement, GRCL will deliver a revised LVAC and Site Wide Lighting supply to power new assets and illuminate walkways, assets and Driver Access Platform (DAPS) as well as install, test and commission a new LVAC panel, lighting control system, power supply to point motors and point heating system.





The Global Rail Construction team are contracted to install, test and commission a revised LVAC supply, temporary and permanent site wide lighting supplies to illuminate walkways, trackside assets and 14No Driver Access Platforms.



A DAY IN THE LIFE OF

**In this issue, we meet Muhammad Naseer,
Procurement & Logistics Assistant for
Global Rail Construction.**

What are your hobbies, and how did you get into them?

Swimming:

I used to be afraid of deep water and then one of my good friends aided me in overcoming this fear while I was an undergrad student and now I only swim in deep water with a minimum depth of 20 feet.

Travelling/Trekking/Hiking:

My friends from the university and I usually go for travelling adventures, such as camping, hiking and exploring hilly areas.

Reading:

I have always been a keen person to learn about the history and people who had lived and have been living in different parts of the world, and therefore, I started reading books, articles, travel blogs and autobiographies.

What do you feel most proud of?

When I look back to where I started. When I came to the UK and compare it to where I am now, I feel proud. The reason is, despite people telling me that this is the only standard way of going where you want to go, I, instead, worked hard, did not conform to the so-called '*standard way*' and as a result, I now have a better life.

What is your favourite music?

I seldom listen to music however I prefer classical music.

If you could travel anywhere, where would you go and why?

I want to see the whole world but if I must choose one place then that would be Switzerland because of the well-preserved nature.

What teacher in school made the most impact on you and why?

My Statistics (Mathematics) Professor.

Despite being among the top 10 professors of Asia, he was a humble and down to earth person.

What was one of your most defining moments in life?

My undergrad school, GIKI, my best decision so far, it not only changed me as a person but also my perspective of the world.

If you won the lottery, what would you do?

I want to travel the world, meet new people, listen to their stories and most importantly provide for those who do not have what I have.

Who do you most admire in life?

I admire many people, such as my parents, family members, friends for their support and prayers.

Also, people who were bad and rude to me, as I learnt the world's hard realities from them. However, the person who I admire the most is myself, because, I learned from my past and decided to make my present and future better.



What are your top three favourite books and why?***40 Rules of Love:***

Never judge anyone, especially on the grounds of other people's opinion.
Also, be available to everyone and live a simple, peaceful and honest life even if you are a King.

The Richest Man in Babylon:

Learn first before you endeavour, and then make money to make more money.

The Alchemist:

The true riches of the world are not gold or silver but yourself and the way you perceive yourself.

What are you most afraid of?

What if there is no tomorrow.....

What is your strongest quality?

Honesty

What was your most embarrassing moment?

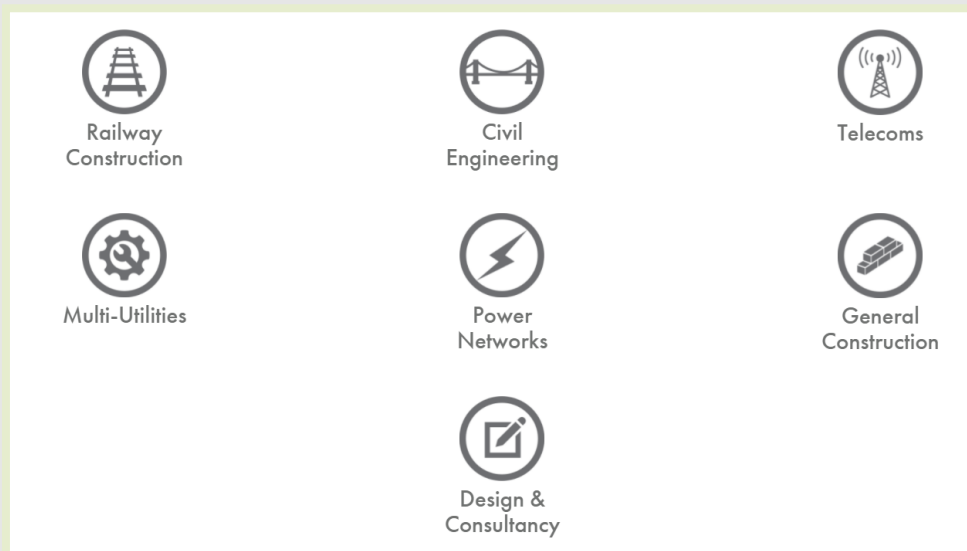
One of my friends asked me to ask out a girl by giving me a mobile number and when I rang her, she said "I am your teacher, Zainab" (She had my number saved but I didn't...)

What is a skill you would like to learn and why?

I would like to enhance my communication skills because when you start talking you tell the world who you really are.

Do you like going to the movies or prefer watching at home?

Both



The Global Infrastructure Group of companies, which have been established since 2001, incorporates – **Global Rail Construction Ltd, Global Rail Services Ltd, Global Rail Australia Pty Ltd and GRA Networks** a subsidiary operating in both Ireland and Australia.

“Our USP is without doubt our people and our long-term strategy will ensure we continue to invest in and develop our people to enable us to deliver our customers expectations, in an efficient and consistent manner”.



The VicTrack logo consists of the word "VicTrack" in a bold, orange, sans-serif font, enclosed within a thin orange rectangular border.

Telco - Victrack DTRS Electrical SMR

As part of the Department of Transport (DoT) on-going programme to improve the Digital Train Radio System (DTRS) network, **Global Rail Australia** was awarded the contract to deliver 37 existing DTRS Sites with Upgraded Electrical Works for the BTS Upgrade Project. The scope involved various complexities with working around a live railway environment, accentuated further by integrating these works around the DTRS Network.

Global Rail Australia undertook to provide new Electrical Works designed to complement the existing DTRS infrastructure. In addition, improved Electrical Consumer Mains and Sub Mains also formed part of the scope at some location

Having a multi-disciplinary workforce with rail, civil and structural installation expertise, mechanical and electrical plus general construction capabilities, along with in-house construction management, allowed **Global Rail Australia** to provide a compelling bid and ultimately deliver a successful scope of works in the Operational DTRS and Rail networks.

The Deliverables

Global Rail Australia was tasked with providing a fully managed programme of works, effectively coordinating with station staff and all other stakeholders to achieve full compliance with all relevant quality, safety and railway standards, based on the following scope of activities. 37 existing DTRS Sites with Upgraded Electrical Works for the BTS Upgrade Project. Upgrades of Multiple Consumer and Sub Mains.

Project risk management including relevant risk discussions at all project stages and undertaking reviews of control measures throughout the programmed work

- Preparation of a detailed programme of works taking into account phasing required to deliver the scope whilst mitigating impact to patrons and stakeholders.
- Installation of electrical service runs.
- Provision of all quality and as built documentation.
- Management and co-ordination of key statutory requirements, for example Certificate of Electrical Safety (COES)
- Site mobilisation including the erection of all delineation and access provisions outlined in occupation management plans developed and approved in conjunction with TFPC's requirements.
- Service location and detailed site-investigation works.
- Decommission of existing redundant infrastructure and cabling.
- Discussion of programs throughout the contract was a valuable communication tool to ensure all affected parties were given due consideration





The VicTrack logo consists of the word "VicTrack" in a bold, orange, sans-serif font, enclosed within a thin orange rectangular border.

Challenges & Solutions

One of the major challenges of this project centered around maintaining live operation to the existing DTRS Network whilst performing significant Electrical additions and improvements. Interface with the public, station staff and stakeholders was of paramount importance throughout the build.

In consultation and agreement with VicTrack a bespoke methodology and works staging plan was developed for the project including all relevant site access management arrangements. Attention to detail is something **Global Rail Australia** prides itself on. This project has been no exception, seeing quality control of the highest level. All works have been delivered to the highest standard. This was critical to the success of the project and the continuation of the relationship between VicTrack and **Global Rail Australia**.

The Benefits

By appointing **Global Rail Australia** as a single point of contact for the project, VicTrack was again provided with the surety of a contracting organisation that would fully manage the project and the complex interfaces on its behalf.

Employing a contracting organisation deep rooted in the railway industry aided the planning and understanding of the unique complexities of working in a live rail environment in one of Australia's most famous railway networks.





ARTC – NERL AERIAL LINE WIRE REMOVAL - POWER SUPPLY CIVIL WORKS

The overall North East Rail Link (NERL) project between Albury and Melbourne, is designed to improve train reliability, speed and vehicle amenity on the corridor.

The Aerial Line Wire Removal Project seeks to remove reliance on the aerial pole lines across the North East rail corridor. Continued wire theft is a driving factor in reliability issues experienced within the NERL corridor, and the cause of significant cost.

The scope of this project covers 5 sites in Tallarook, Kilmore East and Wallan, and includes:

- CSR (Cable Services Route) to be built to carry power supply to the respective ARTC Asset Location Case (LOC) at all sites
- Meter box Post to be built and installed adjacent to existing Ausnet Power Supply Pits at 3 sites
- Power Cable (ex ARTC store) is to be pulled through the CSR from power source pit to the end LOC pit / LOC at all sites.
- Cable will also need to be pulled through existing conduits connected to the new route
- Cable will also need to be pulled through the Meter box Post (3 sites)

PROJECT SCOPE

- Installation of ARTC Type 2 Buried Cable Route in compliance with ARTC and Australian Standards from power supply pit to ARTC asset (LOC)
- 2 x Ø100mm Orange Class 12 HD Rigid UPVC conduits (Ø100mm is a spare) for main cable route between the pits and the ARTC LOC Asset, or the nearest pit to the LOC.
- 1 x Ø50mm Orange Class 12 HD Rigid UPVC conduit is to extend from the Ausnet power supply pit to the meter post.
- Ø50mm Orange Class 12 HD Rigid UPVC conduit may also be used from the LOC or the meter post to the first adjacent Pit.
- Cable routes are to run perpendicular and parallel to rail. Any exemptions to this are to be approved by the ARTC project manager.
- Contractor is to pull power supply cable (ARTC supplied) through conduit, allowing sufficient excess cable (see Table 1) in final pits to reach into the LOC for connection by signalling engineers.
- Pits to be ARTC type approved (or in trial) and have pad lockable pit lids in line with ARTC requirements.
- The contractor is responsible for appropriately backfilling trenches in accordance with ARTC standards, in all cases including when the route crosses culverts, waterways etc.
- The contractor is required to ensure compaction in all cases is achieved in accordance with ARTC & V/line standards.



Trench open, ready for conduits installation



Conduits installed as per design



Traceable Marker Tape installed & backfill & compaction of trench



Completed meter post

Global Rail Australia
Successfully Executed This Project Safely
&
As Per The Agreed Programme
*** THANK YOU TEAM ***

Global Rail Australia
 5 Plane Tree Avenue
 Dingley Village
 Vic 3172
 Australia
+61 (0) 3 9551 0465

Global Rail Australia has proven experience in delivery of the most exacting projects across a diverse range of service sectors. Our in-house capabilities, our scale and our supply chain partnerships have allowed Global Rail Australia to deliver complex multi-disciplinary projects that make a positive difference to our clients across the Australian infrastructure industry that we serve.

MTM – BETTER STATIONS UPGRADE PROJECT – INSTALLATION OF BICYCLE INFRASTRUCTURE AND BINS IN VARIOUS METRO STATIONS

The early work package for the Better Stations Amenity Upgrades Project, aims to improve the customer amenities at several metropolitan train stations to improve safety and enhance the customer experience.

On behalf of the Department of Transport (DoT), Metro Trains Melbourne (Metro) is delivering the project.

As part of the delivery and commissioning of this project, **Global Rail Australia** was engaged to upgrade bicycle infrastructure in various metro stations and install bins at North Richmond Station.

PROJECT SCOPE

Site specific scope for each station is as follows:

- **Albion Station** Remove 3 old bike hoops, 10 bunny ears and install 19 new bike hoops
- **Laverton Station** Install 36 new bike hoops
- **Tottenham Station** Relocate one existing steel seat and install 3 new bike hoops
- **Gowrie Station** Remove all old bike hoops on platforms, 2 old bike cages and Install 1 Parkiteer, and 12 bike hoops
- **North Richmond Station** Install 8 new steel bins
- **Darebin Station** Install 15 new bike hoops
- **Eaglemont Station** Install 2 new bike hoops
- **Ivanhoe Station** Remove 4 old bike cages and existing hoops on platform 1. Construct a retaining wall and install 31 new bike hoops.
- **Macleod Station** Remove existing hoops from platform 1 and install 17 new bike hoops
- **Kananook Station** Install 16 new bike hoops
- **Mount Waverly Station** Install 32 new bike hoops



**Thank You Team
For The Excellent Workmanship**



GRA Hughes Court, Western Junction

Global Rail Australia Properties eight units have been fully completed as of April 2022, with GRA securing one unit and the remaining units for lease.

A total of two out of the seven units have currently got commercial tenants moved in.

See some completion photos below.



The Global Infrastructure Group's vision is to be the leading infrastructure company in the sectors we operate, benefiting the communities we serve, the people we employ, and our investors.



ESBT Site Maintenance Project

GRA Networks carry out site maintenance for ESB Telecom on a batch basis across the entire ESBT Network. This work includes general site maintenance such as condition climdown, equipment survey and general certification.



General Site Maintenance

As part of our maintenance, we carry out ground maintenance which includes identification of site hazards, trip hazard painting, hedge cutting and weed treatment. We also undertake a tower condition survey which includes bolt torque tests, general tower inspection, equipment identification per operator and certify key elements of each structure such as,

- Tower Safe to Climb Certification
- Fall Arrest Certificate
- Bolts Torqued Test
- RF Emission Test
- Earth Electrode Resistance Testing

Sample Certificates

Safe to Climb Certificate

Site: Carlow 110kW
 Structure Type: 30M 3-Sided Lattice
 Supplier: Delmec
 Date of inspection: 30/05/22

This is to confirm that the fall arrest system on the above-named structure has been inspected as per the manufacturer's specifications and in our opinion, subject to the remarks below, it is safe for trained personnel to climb this structure using the following (circle Y or N):

a) Existing Fall Arrest System Y / N
 b) Double Lanyard System Y / N
 c) Other - see comments below Y / N

Comments:

Signed on behalf of GRA Networks
 Signature: Gary Monaghan Position: PCW Roper
 Print Name: Gary Monaghan

Torque Certificate

Site: Aghada (Greenfield)
 Structure Type: Del 6 Lattice, 30m
 Supplier: Delmec
 Date of inspection: 24/09/2021

This is to confirm that all new bolts fitted have been torqued as per manufacturer's specifications and guidelines and 5% of the bolts on the above named structure have been torqued and checked as per specification

Comments:

Signed on behalf of GRA Networks
 Signature: Killian Martin Position: PCW Roper
 Print Name: Killian Martin

SITE HAZARD IDENTIFICATION					
Location	Location Description	Fall Arrest Type	Date	Structure Height	ESB No.
1	Carlow 110kW	Delmec	30/05/22	30m	110kW
Type of Structure		Del 6 Lattice	Delmec	30m	110kW
Distance between ESBT & tower sub-station fence		7m	Delmec	30m	110kW
Distance from entrance gate to ESBT pedestrian gate		100m	Delmec	30m	110kW
Ref No.	Hazard Description	Is it covered by manufacturer?	Is it covered by ESBT?	Is it covered by ESBT?	Is it covered by ESBT?
1	Access / Egress	Yes	Yes	Yes	Yes
2	Site Security	Yes	Yes	Yes	Yes
3	Slips, Trips & Falls	Yes	Yes	Yes	Yes
4	Access restrictions to HV sub-station	Yes	Yes	Yes	Yes
Electrical Apparatus					
5	Type of Electrical Hazard	HV	LV	Yes	Yes
Distance from the structure to OH line		10m	10m	Yes	Yes
Location of OH line relative to ESBT equipment		OH, approx. 10m from structure on opposite side of road.	Yes	Yes	Yes
6	Underground Electrical Cables	Yes	Yes	Yes	Yes
7	Working at Height	Yes	Yes	Yes	Yes
8	Working at Height	Yes	Yes	Yes	Yes
9	Working at Height	Yes	Yes	Yes	Yes
10	Working at Height	Yes	Yes	Yes	Yes
11	Working at Height	Yes	Yes	Yes	Yes
12	Working at Height	Yes	Yes	Yes	Yes
13	Working at Height	Yes	Yes	Yes	Yes
14	Working at Height	Yes	Yes	Yes	Yes
15	Working at Height	Yes	Yes	Yes	Yes
16	Working at Height	Yes	Yes	Yes	Yes
17	Working at Height	Yes	Yes	Yes	Yes
18	Working at Height	Yes	Yes	Yes	Yes
19	Working at Height	Yes	Yes	Yes	Yes
20	Working at Height	Yes	Yes	Yes	Yes
21	Working at Height	Yes	Yes	Yes	Yes
22	Working at Height	Yes	Yes	Yes	Yes
23	Working at Height	Yes	Yes	Yes	Yes
24	Working at Height	Yes	Yes	Yes	Yes
25	Working at Height	Yes	Yes	Yes	Yes
26	Working at Height	Yes	Yes	Yes	Yes
27	Working at Height	Yes	Yes	Yes	Yes
28	Working at Height	Yes	Yes	Yes	Yes
29	Working at Height	Yes	Yes	Yes	Yes
30	Working at Height	Yes	Yes	Yes	Yes
31	Working at Height	Yes	Yes	Yes	Yes
32	Working at Height	Yes	Yes	Yes	Yes
33	Working at Height	Yes	Yes	Yes	Yes
34	Working at Height	Yes	Yes	Yes	Yes
35	Working at Height	Yes	Yes	Yes	Yes
36	Working at Height	Yes	Yes	Yes	Yes
37	Working at Height	Yes	Yes	Yes	Yes
38	Working at Height	Yes	Yes	Yes	Yes
39	Working at Height	Yes	Yes	Yes	Yes
40	Working at Height	Yes	Yes	Yes	Yes
41	Working at Height	Yes	Yes	Yes	Yes
42	Working at Height	Yes	Yes	Yes	Yes
43	Working at Height	Yes	Yes	Yes	Yes
44	Working at Height	Yes	Yes	Yes	Yes
45	Working at Height	Yes	Yes	Yes	Yes
46	Working at Height	Yes	Yes	Yes	Yes
47	Working at Height	Yes	Yes	Yes	Yes
48	Working at Height	Yes	Yes	Yes	Yes
49	Working at Height	Yes	Yes	Yes	Yes
50	Working at Height	Yes	Yes	Yes	Yes
51	Working at Height	Yes	Yes	Yes	Yes
52	Working at Height	Yes	Yes	Yes	Yes
53	Working at Height	Yes	Yes	Yes	Yes
54	Working at Height	Yes	Yes	Yes	Yes
55	Working at Height	Yes	Yes	Yes	Yes
56	Working at Height	Yes	Yes	Yes	Yes
57	Working at Height	Yes	Yes	Yes	Yes
58	Working at Height	Yes	Yes	Yes	Yes
59	Working at Height	Yes	Yes	Yes	Yes
60	Working at Height	Yes	Yes	Yes	Yes
61	Working at Height	Yes	Yes	Yes	Yes
62	Working at Height	Yes	Yes	Yes	Yes
63	Working at Height	Yes	Yes	Yes	Yes
64	Working at Height	Yes	Yes	Yes	Yes
65	Working at Height	Yes	Yes	Yes	Yes
66	Working at Height	Yes	Yes	Yes	Yes
67	Working at Height	Yes	Yes	Yes	Yes
68	Working at Height	Yes	Yes	Yes	Yes
69	Working at Height	Yes	Yes	Yes	Yes
70	Working at Height	Yes	Yes	Yes	Yes
71	Working at Height	Yes	Yes	Yes	Yes
72	Working at Height	Yes	Yes	Yes	Yes
73	Working at Height	Yes	Yes	Yes	Yes
74	Working at Height	Yes	Yes	Yes	Yes
75	Working at Height	Yes	Yes	Yes	Yes
76	Working at Height	Yes	Yes	Yes	Yes
77	Working at Height	Yes	Yes	Yes	Yes
78	Working at Height	Yes	Yes	Yes	Yes
79	Working at Height	Yes	Yes	Yes	Yes
80	Working at Height	Yes	Yes	Yes	Yes
81	Working at Height	Yes	Yes	Yes	Yes
82	Working at Height	Yes	Yes	Yes	Yes
83	Working at Height	Yes	Yes	Yes	Yes
84	Working at Height	Yes	Yes	Yes	Yes
85	Working at Height	Yes	Yes	Yes	Yes
86	Working at Height	Yes	Yes	Yes	Yes
87	Working at Height	Yes	Yes	Yes	Yes
88	Working at Height	Yes	Yes	Yes	Yes
89	Working at Height	Yes	Yes	Yes	Yes
90	Working at Height	Yes	Yes	Yes	Yes
91	Working at Height	Yes	Yes	Yes	Yes
92	Working at Height	Yes	Yes	Yes	Yes
93	Working at Height	Yes	Yes	Yes	Yes
94	Working at Height	Yes	Yes	Yes	Yes
95	Working at Height	Yes	Yes	Yes	Yes
96	Working at Height	Yes	Yes	Yes	Yes
97	Working at Height	Yes	Yes	Yes	Yes
98	Working at Height	Yes	Yes	Yes	Yes
99	Working at Height	Yes	Yes	Yes	Yes
100	Working at Height	Yes	Yes	Yes	Yes



Fall Arrest System



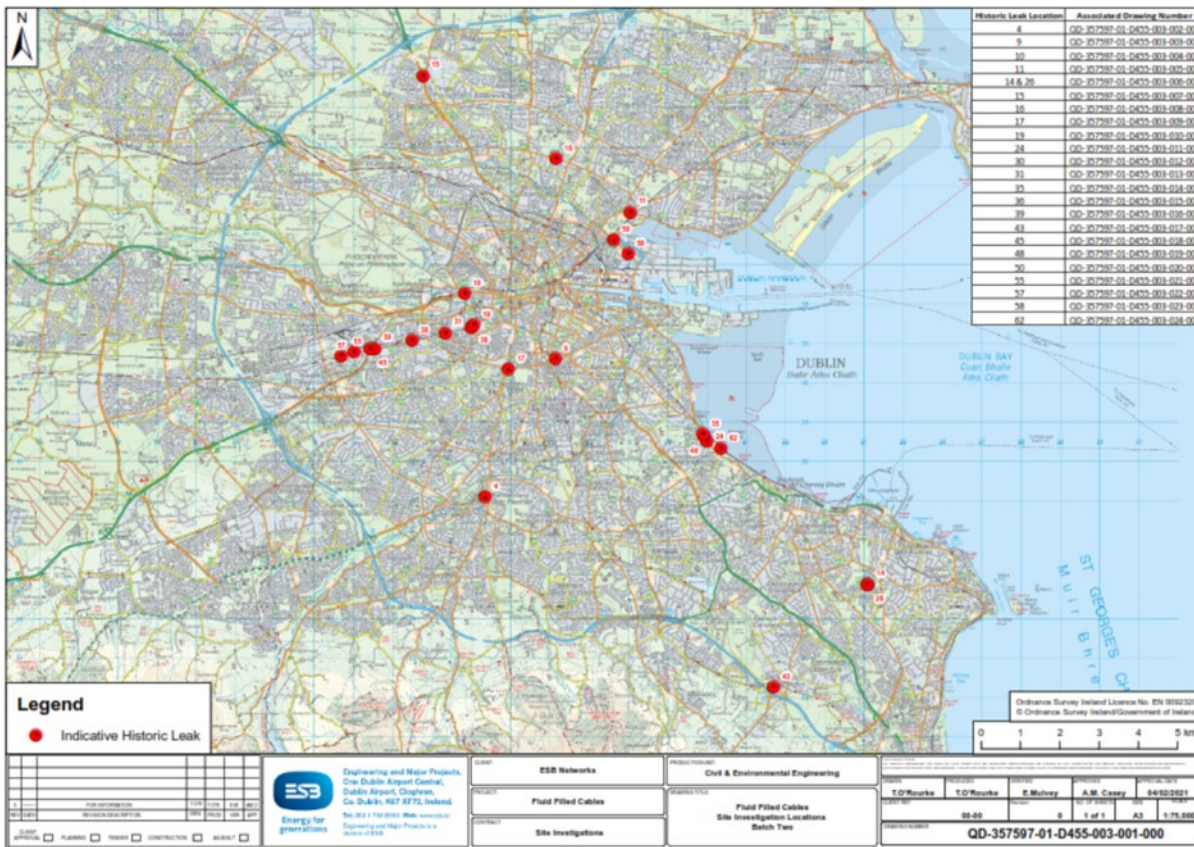
Before Photos



After Photos



ESB Fluid Filled Cables Site Investigation



In 2019, ESB Networks commissioned ESB Engineering & Major Projects (EMP) to undertake an environmental screening assessment of the fluid filled cables network to identify and assess leaks. Following the completion of the assessment, in agreement with the EPA and relevant authorities, a decision was made to begin intrusive assessments at agreed locations in order for an Environmental Consultant to complete the assessment



The ESB appointed **Global Rail Services Limited** as Project Supervisor Construction Stage (PSCS) with our scope of works involving the site investigation of 62 No. slit trenches and 3 No. 'L' trenches to be completed at 23 No. sites, all excavations are anticipated to be 3m deep. Slit trenches are indicatively located in close proximity to the assumed leak locations or between the assumed leak locations and sensitive receptors. The ESB appointed Environmental Consultant will recover soil samples from the extents of the excavations, at surface level. Soil sampling will be carried out by the Environmental Consultant at locations shown on the drawings .

Project Update 04.08.2022


Of the 62nr slit trenches 55nr have been completed to date with 2nr new slit trenches added to the scope which are yet to be completed, 7nr have been descoped from the project by ESB. Permanent reinstatements to the Dublin City Council specification on the project are 90% complete, with line marking and anti skid surfacing yet to be completed which is anticipated to be completed in the next 4 weeks.








Third Party Private Property Works


During a recent excavation on private property in the presbyterian church in Clontarf, GRSL completed the works to all the requirements and stipulations set out by the church committee. We received the following positive feedback which is testament to the quality of the works completed by our crews.

Re: ESB Networks - Site Investigation works

 Congregational Committee Secretary <secretary@clontarfchurch.ie>
To: Girvan, Thomas (Engineering and Major Projects)
Cc: John Casey; O'Neill, Paul (Engineering and Major Projects)

 Reply  Reply All  Forward  

Tue 12/07/2022 11:21

 You forwarded this message on 13/07/2022 08:44.

Dear Thomas

I am writing to let you know that we are very happy with the work undertaken by John and his crew.

Good communications, all the conditions we stipulated were met, very quick, clinical and clean in carrying out their task.

On Sunday, two days after the work was done, it was difficult to see that any work had taken place.

Thank you for making this a pleasant experience.

All the best

Samuel

Dr. Samuel Ritchie
Congregational Committee Secretary.

Tar Permanent Reinstatement Works

All of the site investigation slit trench works that required excavation in the public carriageway are now complete. Of the 57nr slit trenches in the revised ESB scope, 19nr were completed in grass verge and permanently reinstated as the works progressed.

For all other works there were 38nr slit trenches to be completed in a mixture of footway and carriageway. 17nr of these are in concrete footway which are fully complete, the remaining 21 are in tar carriageway surfaces which are a mixture of stone mastic asphalt and hot rolled asphalt Surfaces. Of the 21nr slit trenches requiring permanent tar reinstatement, there are 4nr to be completed, which are anticipated to be completed imminently.



Slit Trench Excavation Works



All of the revised scope slit trench excavation works are now complete except for 2nr which are anticipated to be completed imminently.

The last 2 remaining slit trenches are located very close to the main thoroughfare in Dublin city – O'Connell Street. Given the extremely busy location and the extensive traffic management that this location will require, continuous liaison is required between all stake holders (DCC, ESB, An Garda Siochana, traders associations & the public). This project has had a mixture of normal working hours, night works and weekend day time working hours.



Gormanston & Dalkey Footbridge Works

The new accessibility footbridge at Gormanston Station, Co. Meath and Dalkey Station, Co. Dublin are adjacent to existing railway lines with lift shafts on both sides.

The footbridge in Dalkey Station has many challenges. The first challenge is limited access tight area, because of its location within a small village and that the railway line has been cut into a 30-degree terrain and there is a granite shelf approximately 4m below existing ground level. On top of this the line is electrified as well.

On both platforms all the RC base and wall foundations are completed. All ducts and drainages services, manholes, JB4 and aco channels have been installed. 40% of the precast lifting is complete and the next step is to start the structural steel frame installation.

The first precast lift in Dalkey took place on Saturday, 30th July and we installed everything according to IE drawings and manufacture specifications.

The crane was a Terex Demag AC -220 and the maximum radius of the crane was 26.5m.

In Gormanston the precast has been installed. All works have been done under GRS supervision in a safe and good manner, following the specifications, drawings and agreements with Iarnrod Eireann. The structural steel was installed on the bridge prior to the lift and the bridge was lifted and landed safely in record time.

The works were expected to be completed over an eleven-month period which commenced in November 2021 in Gormanston and January 2022 in Dalkey. Even though we have faced the market instability we are still looking forward and putting all the effort to finish the works on time.

The final finishes have started in Gormanston, the tarmac has been installed on both sides (Up Platform and Down Platform) which gives us a taste of the end result of the project.

The blockwork is nearly finished in the Up Platform and the external cladding has just commenced.

As the works are adjacent to railway lines, some of the works needed to be done under a Lookout supervision to guarantee safety to all personal on site. For example the precast lifting and the electrical installation in the UTX have been done under full possession.



Drogheda Permanent Way Stores Refurbishment

The Drogheda Permanent Way Stores refurbishment project is being completed for Irish Rail permanent way staff.

This project involves the regeneration of storage space into a new state of the art offices and facilities.

This includes removal of existing internal walls and floors, the installation of insulation, radon barriers and a new concrete floor.

As part of the internal fit the area will be completely re-wired providing new lighting, power, fire and communications supplies. There will also be the installation of a new heat recovery system and Air Conditioning units.

The existing toilets and showers will also be re-plumbed, new radiators and hot water heating system and tanks

All internal walls will be dry lined, insulated and stud partitions will create the new office space.

New floors, doors and windows will also be required as part of the fit out.

Dado trunking will be used in all areas of the office to provide versatility.

The project is planned to be executed within 12 weeks and is currently on target.



Global Rail Services

Unit 516a Grants Rise
Greenogue Business Park
Rathcoole, Co Dublin
D24 FH56
Ireland

+353 (0) 1 458 8540

Global Rail Services has proven experience in delivering some of the most exciting projects across a diverse range of service sectors.

Our in-house capabilities, our scale and our supply chain partnerships have allowed Global Rail Services to deliver complex multi-disciplinary projects that make a positive difference to our clients, across the Irish infrastructure industry that we serve.



Global Rail Construction and Atkins jointly attended a hugely beneficial training forum covering Safety Culture and Sustainability on their Feltham & Wokingham Re-signalling Package 1. The content included collaborative working, engaging with the team in safety moments, discussing mental health issues, behavioural changes of an individual within your team and how to handle situations amongst many other important areas.

Some of the feedback from the course was extremely positive, comments included:
“The method was unique - providing a platform that I have not experienced previously. It was extremely enjoyable and engaging from start to finish - I would highly recommend it to anyone”.



At the Global Infrastructure Group we continue to develop and maintain the skills of our workforce to enable them to do their jobs safely and efficiently. Training improves an individuals self-worth, it inspires engagement and reinforces their value. Not only learning new skills is necessary, but also practicing your existing skill is. Here are some of our workforce attending a recent Safe Use of Power Tools training course at Global Rail Construction’s Head Office in Hatfield.



Celebrating 20 Years

Joe Lomonaco (GRCL Procurement & Logistics Manager) celebrated 20 years service with Global Rail Construction on the 24th June.

Thank you Joe for your loyalty, commitment and hard work for the past two decades.

Marco Lombardelli (GRCL Managing Director) relayed his gratitude to Joe with the following message, ***“Thank you for being such a valuable member of our team. Thank you for dedicating your 20 amazing years of work to our organisation. I wish we continue to hold our strong professional and personal bond for another 20 years to come. Your positive attitude towards work inspires everyone here to give their best.”***



Nick Turner (GRCL Project Manager) (L) presenting Phil with his 20 year award

Phil Vincent (GRCL Supervisor) celebrated 20 years service with Global Rail Construction on the 29th July.

Phil is being presented with his award by Nick Turner (L) (GRCL Project Manager).

Thank you Phil for your loyalty, commitment and hard work for the past two decades.

Marco Lombardelli (GRCL Managing Director) relayed his gratitude to Phil with the following message, ***“Congratulations on achieving 20 years of exemplary work service. We are so proud to have you as part of the GRCL Family. We truly appreciate your dedicated service to the organisation, and I am personally thankful for your example as a role model for the company.”***

The Global Infrastructure Group are globally engaged in a whole spectrum of markets, offering solutions specific to our client needs.

The nature of our high-value services means we are involved in complex projects. These projects often require a combination of our activities and services in order to deliver the optimum result for our clients.

Recognising that each industry and sector of activity has its own processes, we offer solutions specific to our clients needs.

HOLISTIC MENTAL HEALTH

One in four people in the UK will suffer from a mental health issue at some point in their lives. Whether these issues are work-related or from life outside, Validium offer a compassionate, proactive approach, exemplary clinical expertise and a digital-first platform, to enable better support.



MENTAL HEALTH SUPPORT PROGRAMMES

Mental health issues like stress and anxiety account for 40% of all sickness absences. Validium's Mental Health Support Programmes (formerly Employee Assistance Programmes) offer support on a range of issues related to work, family, debt, relationships, and more. They provide independent, confidential support and counselling when needed.

PSYCHOLOGICAL SERVICES

For more complex needs, Validium also offers tailored, psychological support on a longer-term basis, including services such as CBT, Fit for Work, and pain management. Their psychologists take a patient-centric approach to treatment.



CRITICAL INCIDENT MANAGEMENT SERVICE

Unfortunately, many of us encounter a critical incident at some point, where a rapid response and specialist support is required. This could include bereavements, redundancy processes, significant accidents but can extend to cover other incidents. Validium offer trauma counselling and life coaching and have an experienced multi-disciplinary team that can help guide you throughout the entire process, from the very first call to the last.



0800 3 58 48 58

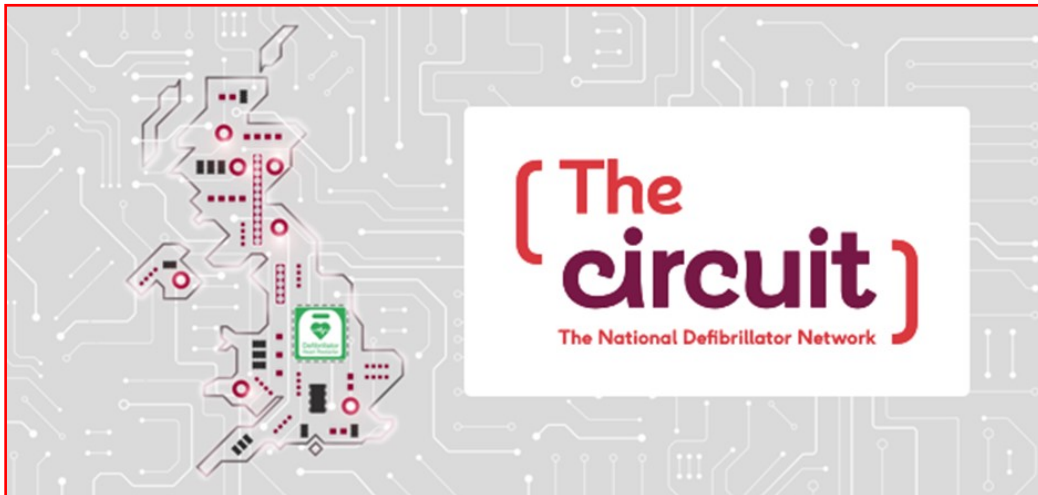
Outside UK: +44 141 271 7179

For online support join vClub at [validium.com](https://www.validium.com)



An Employee Assistance Programme (EAP) is an invaluable tool for any organisation, ensuring that good mental health is promoted and facilitated, as well as minimising the impact of any external distractions on employees' abilities to function or focus while at work.

Validium EAPs integrate several clinically proven counselling programmes with an array of specialist work/life services. Provided alongside a unique, proactive approach to account management and promotion, Validium delivers a service that is highly visible within the customer organisation, is trusted by employees, is fully utilised and, most importantly, provides great results for employees.



Our Hatfield office defibrillator (or AED) has now been registered to **The Circuit**, a national programme for access to our AED / defibrillator in normal working hours .



Only 1 in 10 people survive an out-of-hospital cardiac arrest in the UK

What is The Circuit?

The moment someone has a cardiac arrest, the clock starts ticking. Every minute without CPR and defibrillation reduces their chances of survival. But many defibrillators are never used because emergency services don't know where they are or how to access them.

This is where **The Circuit** comes in.

The Circuit – the national defibrillator network, connects defibrillators to NHS ambulance services across the UK so that in those crucial moments after a cardiac arrest, they can be accessed quickly to help save lives.

Bonus of the service is that every defibrillator needs someone to be responsible to monitor that it is maintained and ready to do its life saving work. The Circuit helps us to do that with regular reminders about the upkeep of our defibrillator too.



On the 19th August 2015, Terry Cambridge (GRCL Supervisor) passed away.

Terry had an old GRCL fleece which his niece made into this beautiful teddy.

We thought we would share this as we were really impressed with this idea - and what a fantastic job she has done in his memory.



Our profile

The Global Infrastructure Group is an international; leading specialist organisation, focussing on construction, signalling, telecoms, mechanical and electrical design and build solutions within a number of core industries.



Supporting Vulnerable People in Hertfordshire



Captain, Jim Cuell (L) (GRCL Commercial Director) - and his team.

hyh Charity Golf Day Harpenden Common Golf Club

Global Rail Construction were proud to be the Gold Sponsor for **Herts Young Homeless (hyh)** Golf Day.

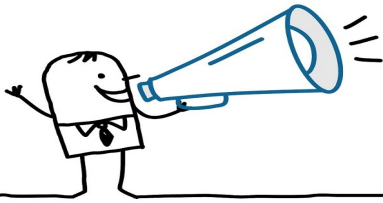
The event took place on Friday 17th June 2022 at Harpenden Common Golf Club. Golf has been played on the Common since 1895. The course benefits from a wonderful mixture of mature trees and gorse set in well-manicured common parkland, tree-lined fairways with a mixture of silver birches, water and superb, well-kept greens. There is continual variety and considerable character about the holes. The course itself is not long. The greens are small and cunning advantage has to be taken of the bumps and hollows and the fiendishness of vegetation. The group were pleased that they managed to see and experience all of these areas during the golf round.



Some of our Global Rail Construction Family braved the heat and completed a 6-mile sponsored walk as part of Global Rail Construction Limited's Health and Wellbeing Programme. They also managed to raise an impressive £765 for chosen charity partner **Herts Young Homeless**. Congratulations to everyone who took part and thank you to all those that sponsored the team.

hyh appreciated the donation and said ***“Thank you to everyone who took part and supported us in this way! Your ongoing support makes a huge difference to the young people we are supporting everyday”***

A huge **THANK YOU** to Nicola Arnett (GRCL Competency and Resource Co-Ordinator) who organised the event.



Welcome To The Global Family...



Gerard Hartigan
Civil Infrastructure Manager



Tim Doreian
Telecommunications Rigger/Tech



Josh Martyn-Keyes
Telecommunications Rigger



Olamide Okusaga
Graduate Engineer



Farzan Khanzada
Railway Infrastructure Civil Engineer

The Global Infrastructure Group of companies, which have been established since 2001, incorporates – **Global Rail Construction Ltd, Global Rail Services Ltd, Global Rail Australia Pty Ltd and GRA Networks** a subsidiary operating in both Ireland and Australia.

“Our USP is without doubt our people and our long-term strategy will ensure we continue to invest in and develop our people to enable us to deliver our customers expectations, in an efficient and consistent manner”.



Global
Infrastructure
Group

A Leading Provider Of Turnkey Solutions
For The Rail Industry



Railway
Construction



Civil
Engineering



Telecomms



Multi-Utilities



Power
Networks



General
Construction



Design and
Consultancy

Combining technical and innovative excellence with a
real passion for detail and safe delivery of projects

www.theglobalinfrastructuregroup.com