



Global
Infrastructure
Group

Issue 33 2022

GLOBAL NEWS



In This Edition.....

- * **Project News**
- * **New Starters**
- * **Celebrations**
- * **A Day In The Life...**



globalnews@grcl.co.uk

Foreword

Welcome to another edition of Global News and our final one for 2022!

I am not sure about all of you; however, I am really not sure where this year has gone! I am sure you will all agree that this publication provides valuable updates to the Global Infrastructure Group and is a fantastic mechanism by which the different organisations can keep up to date with new developments and progress across the GIG Family, particularly our people, and a really positive way to sign-off 2022. I really hope you enjoy the read!

We have worked tremendously hard again this last year to extend our core in-house capabilities and therefore position the Group as a strong tier 2 contractor of choice, across our three entities. It really does impress me every time I read Global News and/or catch up with our Social Media notifications, the vast, varied and challenging works that we undertake across our business. From delivering multi-disciplinary re-signalling schemes, illuminating road bridges, enhancing telecoms coverage and performance, re-modelling stations together with design and build of a number of commercial units across the globe, it really is mind-boggling, particular as the majority of the works are delivered with our very own, in-house core teams.

We have also continued to secure a number of key packages & frameworks throughout the year (with much more to come), which keeps the orderbook strong and provides long-term opportunities for the business and all our people. We have said it numerous times, our continued success can only be achieved via the hard work and effort of the entire Global Infrastructure family, and this truly is testimony to our commitment to enhance our service delivery across our group of Companies.

We have been fortunate to share in many positives and successes throughout the year, and although I and the senior leadership team are delighted with our continued performance, it really is a reflection of our fantastic people, technology, partners and 'can do' attitude that ensures we continue to deliver safely and consistently. Our focus and direction have always been to ensure we are 'best in class' and to insist through everything we do, we always keep our people safe – that is our priority. We will always ensure that the health, wealth and safety of our people, our client, supply chain partners and public, are of paramount importance and precedes everything we do. However, there is another critical factor that contributes significantly to our excellent performance record, **ALL OF YOU**.

Our safety engagement program and the continued support of our safety coaches ensures we impress our core values and behaviors throughout all our projects. They guide our daily activities, develop our culture and compliment and support our strategy which are at the heart of all our day-to-day activities, as well as being reflected in our policies and procedures.

The support from our Leadership and Project delivery teams, together with all our people, is really making a difference – **Please** let's keep doing what we are doing, being open, honest and happy to challenge the status quo to ensure we all go home to our loved ones each day.

Finally, I would also like for us all to take a moment to reflect on those who are no longer with us and particularly their families but live on in our hearts and will always be remembered as part of the Global family.

Both Ivan, myself and our wider leadership teams at the Global Infrastructure Group, would like to take this opportunity to personally thank you all and to wish you and your families, our clients and our supply chain partner's a very happy Christmas and healthy and happy new year!

#Thankyou

#Keepsafe

#Staywell

#MerryChristmas

#Familytime





WOW.....
We raised £131.50!!!
THANK YOU ALL SO MUCH



Passionate

Committed in heart and mind to whole-heartedly embrace our core values and culture, without exception.



People

Growing our organisation from within, promoting and empowering our people, inspiring them to be the best they can be.



Professional

At all times we act with integrity, providing quality service, reliably and responsibly.



Teamwork

Working collaboratively whilst supporting and respecting each other's views.



Responsible

To consistently deliver quality, on time, safely and to budget whilst protecting our communities and the environment.



Following several months of careful planning and delivery, our **Global Rail Construction** (GRCL) team has completed its final stage for client and PC Skanska at SAS Bridge 13 in Birmingham, on behalf of HS2.

Our UK operation was contracted to install over 1000m of various cable management systems and divert 2No 25Kv feeders and return screen conductor circuits within extremely challenging environments - including confined space working within an under-track culvert and embankment works. These enabling works allowed Skanska to demolish the existing brick arch bridge and replace with the new bridge structure.

Many thanks to our client Skanska, HS2 and all the GRCL team for supporting this prestigious project, which has facilitated the construction of HS2's new up, down and depot access lines. Additionally, the new structure will allow for a road access to a new train depot and maintenance facility used by HS2.



Global Rail Construction





Our **Global Rail Construction** (GRCL) teams are working on behalf of Transport for London (TfL) and have been installing signalling and track point power distribution points at the new South Harrow Sidings.

The images below show recent works completed in collaboration with TfL Signal Works Delivery during weekday engineering hour shifts.



Global Rail Construction





Global Rail Construction has completed complex project works at Pooley Green Level Crossing, which is an MCB-CCTV type, operated by RRI circuitry and is controlled by the signaller at Feltham ASC on behalf of valued client Atkins for Network Rail.

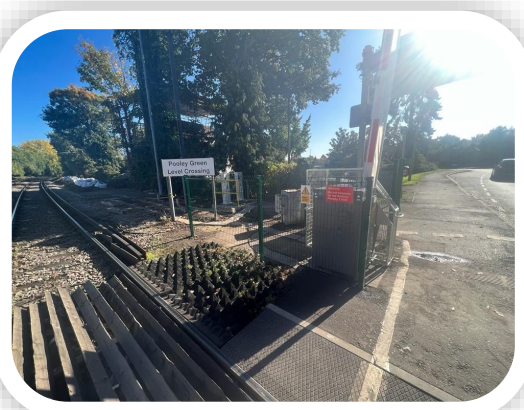
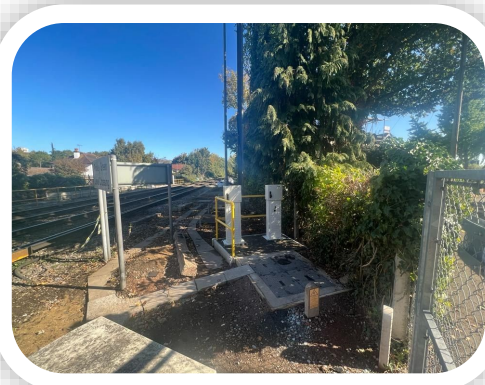
The project commenced at the start of September 2022 with civils installation and prep works for S&T, with decommissioning taking place over recent consecutive weekend's.

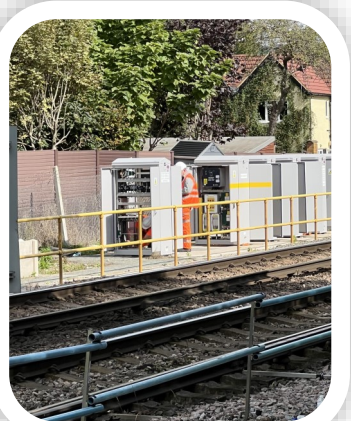
The refurbishment forms part of the Feltham to Wokingham Resignalling Phases 3&4, operated by Atkins ElectrologIXs data and will be controlled from BROCC at final commissioning.

This covers an interim arrangement whereby the existing RRI operating circuitry is disconnected and is replaced by a standalone Atkins ElectrologIXs interlocking, operating renewed crossing equipment and furniture from the final signalling locations and a temporary Interface location. Feltham will remain the point of control, but this will be altered to provide new signaller buttons and indication (POD) but retaining the panel mounted monitors. The existing remote control will be disconnected with new communications being established via FTNx. At this stage of works the decommissioning and recommissioning stages are for this initial arrangement only.

The disciplines covered included:

- ◆ Installation of all Pooley Green location suites including interphase location case MMB's and SMB's
- ◆ All new cables from new location cases to barrier machine RTL's, yodels, booms, SMB and MMB
- ◆ Signalling installation (Inc. Panel Alteration at Feltham)
- ◆ Level crossing new gate barrier machines, booms, yodels and RTL's
- ◆ E&P upgrade of new lighting on existing control systems
- ◆ Telecoms LCU and LCU
- ◆ Civils works covered all alterations to existing SCT, alteration to existing barriers bases, new base for LCC and lay down area for lighting column, new bases for MMB's & SMB's, installation of new fencing and access gates in each corner.







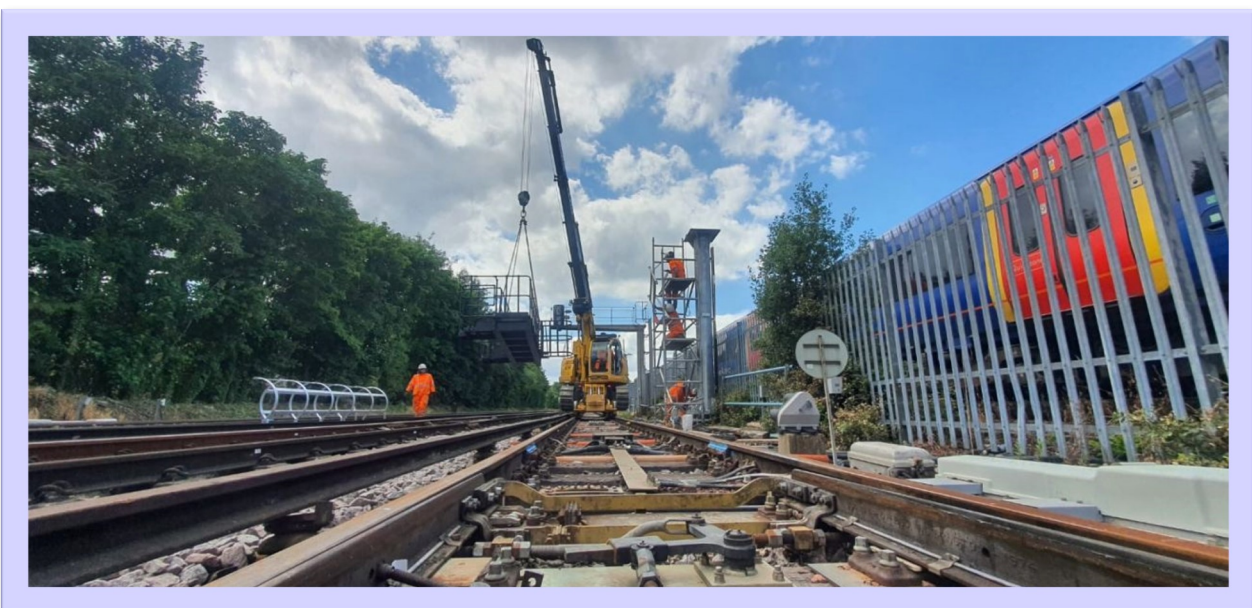
Global Rail Construction (GRCL) has completed Feltham and Wokingham Resignalling's largest civil engineering programme of works, on behalf of Network Rail (NR) Southern Region Capital Delivery.

In October 2020, Global Rail Construction commenced works as the Principal Contractor for the Design and Construction (D&C) of the Advanced Civil Engineering scope of works for Feltham Resignalling Project Phases 3&4. These phases form part of a major Resignalling project to renew life expired signalling, telecoms, and electrical assets for Network Rail, comprising the renewal of 538 Signalling Equivalent Units (SEUs) over 80 miles of railway lines, alongside the introduction of a brand-new signalling system from Atkins – Elix.

Design activities commenced at pace and site works were meticulously planned as part of a compelling tender methodology and approach utilising weekdays and nights, Saturday nights and several 28 and 52-hour railway possessions during a most challenging project timeframe.

The construction works were further extended to September 2022 to include several additional location case hardstanding's, PSP compounds, new signal installations, new cable duct routes to existing station platforms and the installation of various new troughing routes – all effortlessly absorbed by GRCL's in-house D&C team.

Having a railway design and build team, including dedicated project and site management across the civil and structural engineering scope, familiarity with the scheme, having delivered several previous phases and having delivered time pressurised resignalling schemes across Network Rail infrastructure, allowed Global Rail Construction Limited to provide the necessary turnkey solution and complete the project to meet Network Rail's requirements.



The Global Infrastructure Group are globally engaged in a whole spectrum of markets, offering solutions specific to our client needs.

The nature of our high-value services means we are involved in complex projects. These projects often require a combination of our activities and services in order to deliver the optimum result for our clients.

Recognising that each industry and sector of activity has its own processes, we offer solutions specific to our clients needs.

A DAY IN THE LIFE OF

In this issue, we meet Tom Ganley, Project Manager for Global Rail Australia



Where are you originally from?
Clarinbridge, Co. Galway, Ireland.

What is your current role for GRA?
Project Manager

What is your favourite thing about job?
I enjoy the variety of work we do and the balance between site and office work. I've learned a lot and made a lot of close friends through work over the years.

What advice would you give your 'younger self'?
Don't take yourself too seriously and try to enjoy life, it goes by pretty fast.

What are you most proud of?
Leaving home at a young age and making a go of it when there wasn't much happening in Ireland at the time.

Where would you like to travel to and why?
I would love to travel to the west coast of America and Vegas. I recently got engaged so I may line the stag do up for Vegas!!

How do you spend your free time?
Sometimes I explore new places and I do enjoy beach days when the weather is good. I also enjoy golfing and frequenting some 'local watering holes'..

What is your favourite sport?
I used to enjoy hurling, however, I don't play it anymore but its still my favourite sport to watch, followed by golf; and I've started back playing 5 a side football (Soccer)

If you won the lottery, what would you do?
I would disappear never to be seen again!!





The Nokia logo is displayed in white, uppercase letters on a solid blue rectangular background.

Global Rail Australia (GRA) have been contracted on behalf of Nokia, to upgrade the existing 3G/4G network and install the new 5G technology for both Vodafone and Optus (eJV). The suburb where we have recently upgraded a site was in South Yarra, on top of a 7 story building.

GRA supplied all aspects of upgrade works from Riggers, Technicians, Electricians and Roof Plumbers. Liaising with Property Managers, Facility Managers and Security to plan and coordinate these upgrade works, was a very important part in delivering these works.

Delivering materials, working at heights, removing and installing new steelwork, AH access to deliver all equipment/materials and electrical upgrade, were some of the important scopes of works to complete.

This was very demanding and a necessity to run as smoothly as possible, to minimize and interrupt any live recording with Channel 10; this is the location where they film 'The Project', 'The Cheap Seats' and 'Have You Been Paying Attention', just to name three.

The works involved:

- ◆ Delivering all steelwork, materials and equipment, required planning during AH access to complete the delivery, by accessing the elevator then out the fire stairwell to the rooftop location.
- ◆ Electrical upgrade, was required to relocate the VF Meter from the 3rd floor riser, to the existing basement level switch room, where we are to install a new VF Meter Panel, with the relocated VF Meter and install a new VF Submains cable from basement level to the location of the VF Shelter on the rooftop. Liaising with Property Managers and Power Company to isolate and re-isolate to complete these power upgrade works.
- ◆ Network outages, fully decommissioning existing technologies and equipment internally and externally. Upgrading all equipment internally and externally, with new steelwork, antennas, RRUs (Remote Radio Units) and internal BBU (Base Band Units) and ALL DC equipment. Commissioning and integrating the new technology into the Network, via support from the RIC (Remote Integration Centre).
- ◆ Providing all OHS/HSE standards, submission of post completion documentation

Scope as follows: -

- ◆ Remove existing antennas and steelwork from upper rooftop location.
- ◆ Install new steelwork and new plinths into rooftop slab.
- ◆ Install new antennas for 3G/4G and 5G network to the newly installed steelwork.
- ◆ Install new VF and Optus ancillary equipment and Hybrid Trunk cables.
- ◆ Remove existing internal base stations and re-install new base station.
- ◆ Integrate upgraded 3G/4G technology and new 5G into the Vodafone/Optus Network.
- ◆ These works were performed under an SLO (Single Long Outage), meaning the duration of the time both Vodafone and Optus were off air, whilst upgrading the site.
- ◆ All activities were coordinated with Nokia, Channel 10, Security and United Energy.
- ◆ All works were delivered by GRA at a high level of professionalism and safety with no reported safety concerns.

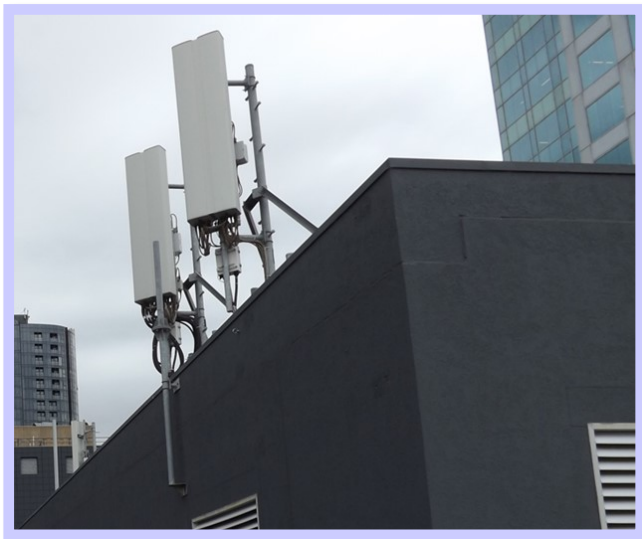




Sector 1 Before



Sector 1 After



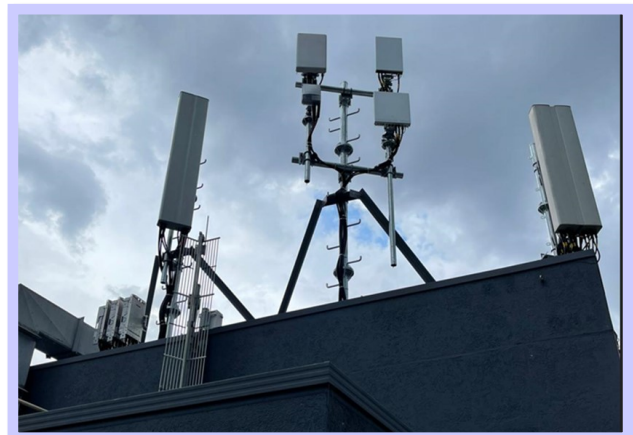
Sector 2 Before



Sector 2 After



Sector 3 Before



Sector 3 After



GRA Networks Australia is delighted to have been selected as Telecoms build partner for the award of a contract for upgrade work to swap out old DAS (Direct Attached Storage) hardware and install new DAS hardware within Parliament Station, i.e. Parliament Public Transport Victoria Melbourne Underground Rail Loop (MURL) DAS Upgrade.

There are multiple works to be delivered during various weekend and holiday period occupations.

This site is particularly challenging due to its sensitive location of a public concourse and platforms with adjacent live rails.

Works include:

- ◆ Site make ready works (Installation of New RU's and associated equipment)
- ◆ Site make ready works (Installation of New Antenna's, feeders, jumpers, couplers, splitters, connectors and associated equipment)
- ◆ Site make ready works (Electrical Upgrades)
- ◆ Site make ready works (Civil Upgrades)
- ◆ Installation and commissioning
- ◆ Integration and activation
- ◆ Decommissioning of legacy equipment
- ◆ Site acceptance

Some of the challenges faced in this project include:

- ◆ MURL environment and additional project access requirements
- ◆ Works involve major DAS upgrades and electrical works.
- ◆ Various occupations and all associated safe working requirements.
- ◆ Delivery of equipment via tunnels, platforms, stairwells, lifts, scaffolding and the public concourse.
- ◆ Installation of cabling in access restricted areas including platforms, tunnel cross passage, tunnels.
- ◆ Proximity of 1500V DC overhead cable.
- ◆ Proximity of live rail environment.



On behalf of the Department of Transport (DoT) as part of the Better Stations Amenity Upgrades Project, **Metro Trains Melbourne** is undertaking installation of a second entrance at Seaford Station.

The Better Stations Project aims to improve the customer amenity of stations on the metropolitan network through a number of improvements.

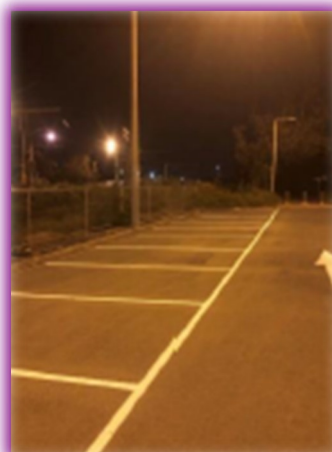
The implementation of the design aims to achieve:

- (a) Functional improvement of existing metropolitan railway stations;
- (b) Improving accessibility;
- (c) Enhancing customer experience at key locations across the network.

As part of the delivery of the Better Stations Project, **Global Rail Australia** was engaged to implement the design to achieve the above listed objective.

The scope of works include:

- ◆ Construct DDA compliant concrete pavement ramp with retaining wall. This will include installation of handrails with kickplate
- ◆ Construct 2No. Myki Fare Payment Device (FPD), and 1No. Myki Quick Top-up Enquiry Machine (QTEM) footings
- ◆ Supply and install of new communication and electrical conduits and pits for Myki FPDs and QTEM. Including installation of draw ropes
- ◆ Supply and install of new communication conduits and pits for new CCTV camera. Including installation of draw ropes
- ◆ Supply and install of carpark signs
- ◆ Supply and install of new 1.8m black chain link fence
- ◆ Supply and install of 8No. 140mm dia yellow bollards with reflective tape
- ◆ Installation of Chevron Line Marking
- ◆ Supply and install new trench grate
- ◆ Supply and install drainage down pipe on existing canopy
- ◆ Supply and install 7No. Type 2 Speed Humps as per AS2890.1
- ◆ Supply and install of TGSIs in accordance with AS1428.4
- ◆ Linemarking whole carpark area.





Global Rail Australia



Global Rail Australia are continuing their works on behalf of Tasmanian Railway Pty Ltd (TasRail) on the South Line Rail and Mudhole Removal.

The sequence of works follow a program to achieve completion by April 2023. The works are linked to required milestone commitments to the Government.

Project Scope:

- ◆ Removal of 75lb rail removal with new rail and associated resleeper works.
- ◆ Removal of fouled ballast (mudholes) rail sections and associated re-railing and resleeper works.
- ◆ GRA track team is about 40% through the program of works and is ramping up to 2 work crews to undertake re-rail and under cutting work. Before Christmas as part of the works we have a box culvert to install and a level crossing formation and track to upgrade.
- ◆ The scope of this contract is to remove all speed restrictions on our work locations after we finalise tamping.
- ◆ All works are completed in a live operational environment. Global Rail Australia staging program and procurement plan was key to the success of the project award.



Global Rail Australia

5 Plane Tree Avenue
 Dingley Village
 Vic 3172
 Australia

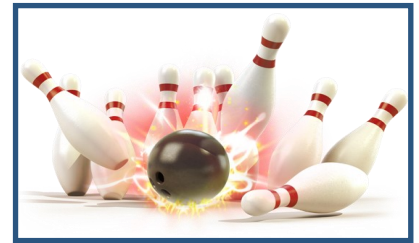
+61 (0) 3 9551 0465

Global Rail Australia

has proven experience in delivery of the most exacting projects across a diverse range of service sectors. Our in-house capabilities, our scale and our supply chain partnerships have allowed Global Rail Australia to deliver complex multi-disciplinary projects that make a positive difference to our clients across the Australian infrastructure industry that we serve.



Global
Rail
Australia



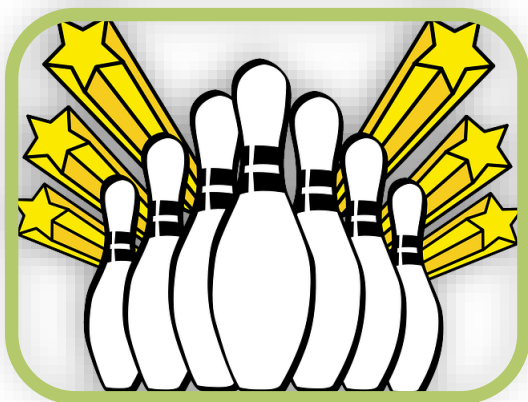
The **Global Rail Australia** Family organised an office outing in September to the local bowling alley. A fantastic afternoon was had by all. Lots of drinks, pizzas and laughs made the afternoon very memorable

Winners for the evening were as follows:

1st Place – Sean Stevens = 127 points

2nd Place – Ashley Robinson/ Ivan Holloway = 115 points

3rd Place – Tom Ganley = 112 points



The Global Infrastructure Group of companies, which have been established since 2001, incorporates – **Global Rail Construction Ltd, Global Rail Services Ltd, Global Rail Australia Pty Ltd and GRA Networks** a subsidiary operating in both Ireland and Australia.

“Our USP is without doubt our people and our long-term strategy will ensure we continue to invest in and develop our people to enable us to deliver our customers expectations, in an efficient and consistent manner”.

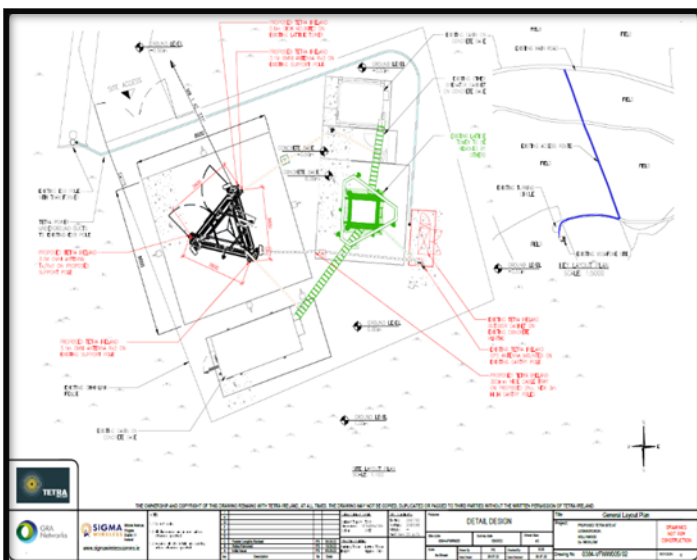
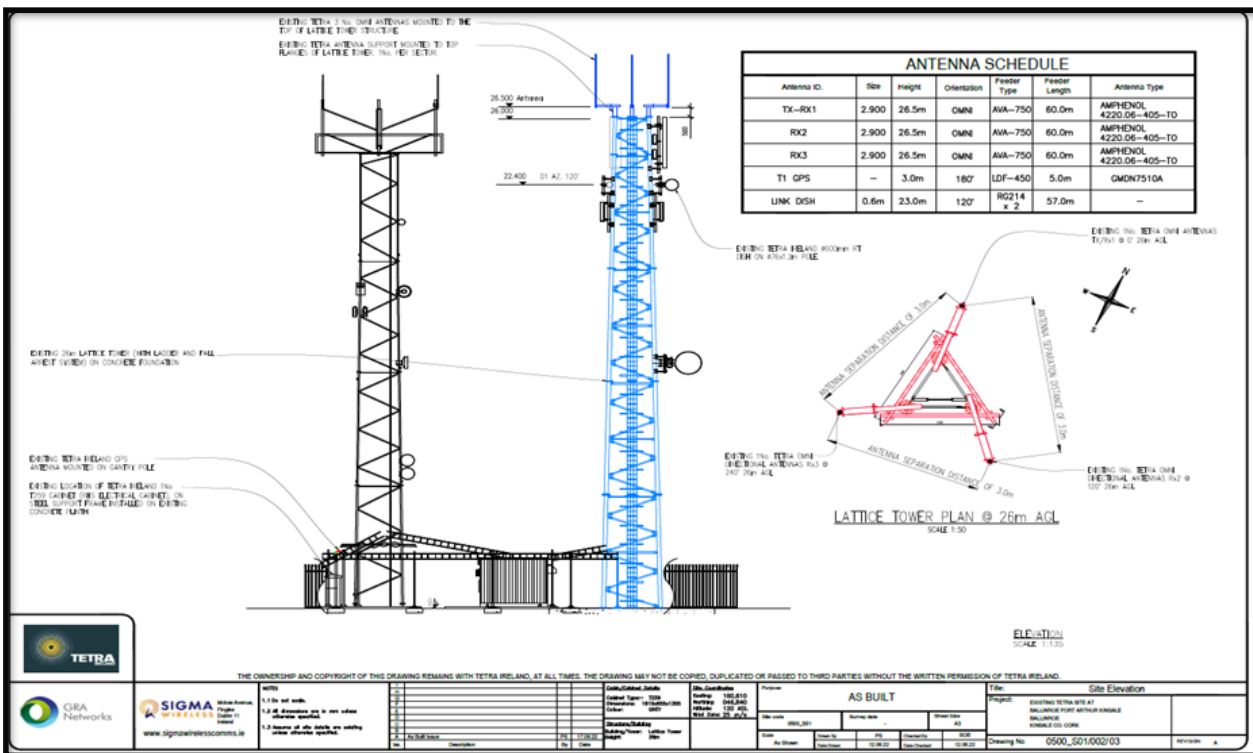


TETRA BUILD FOR SIGMA WIRELESS

GRA Networks has recently provided their services to Sigma Wireless on the emergency service network Tetra. The scope of work includes Design and Build New Sites, migration of existing infrastructure onto new towers and the deployment of Tetra Radio coverage installation in Dundrum shopping centre.

TETRA BUILD-BALLINROE FORT ARTHUR

This project consisted of the migration of the existing equipment from the existing tower to a new structure on the same site.



TETRA BUILD—LUGNAGROAGH

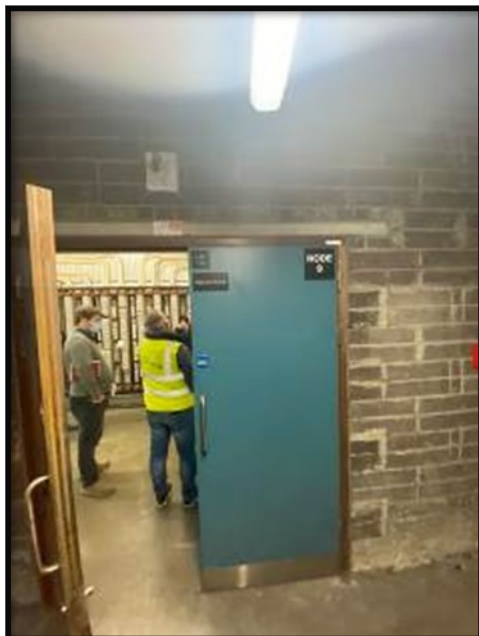
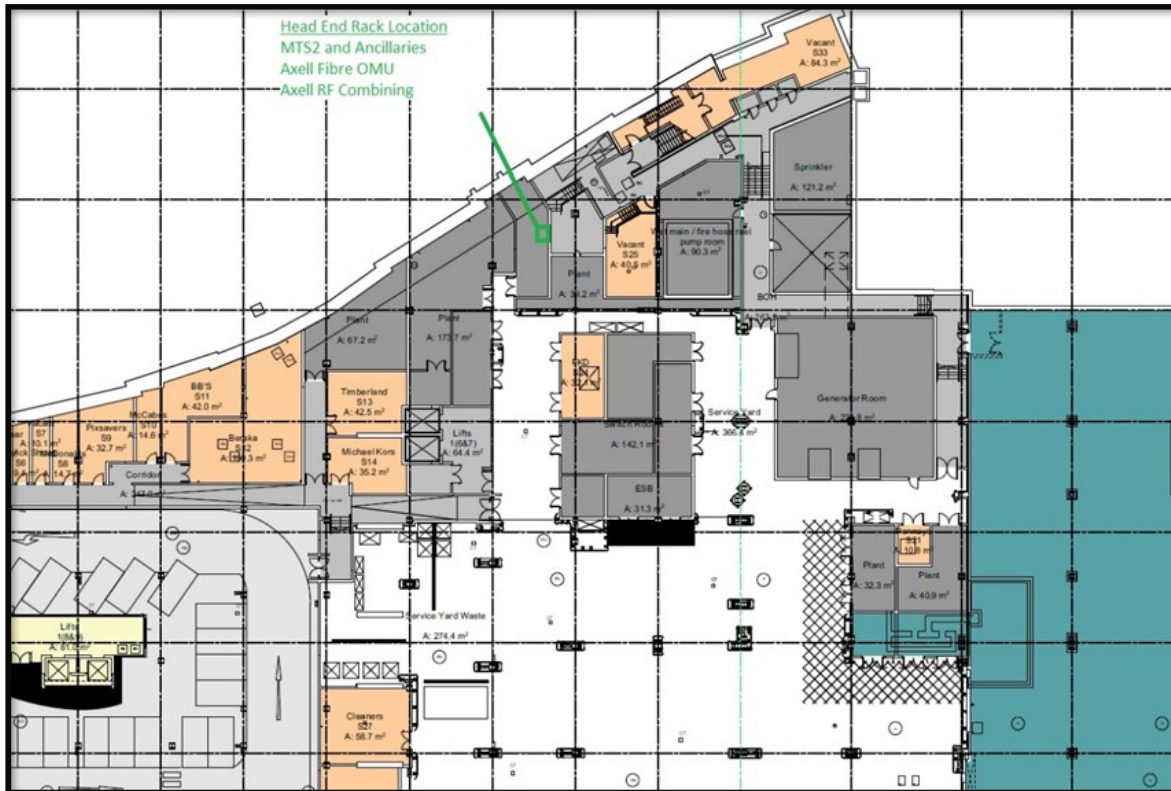
This project consisted of a full Design and Build. Again, migrating existing equipment from the existing tower to the new structure

GRA Networks Ireland



DUNDRUM TOWN CENTRE

This project consists of the installation of telecom infrastructure to provide coverage within evacuation routes and other defined areas within Dundrum town centre. The network will be installed on several levels throughout the centre with antenna's installed at key locations to ensure full coverage.





Iarnród Éireann, or Irish Rail, appointed **Global Rail Services** to upgrade existing and install new CIS (Customer Information Services) equipment at eight stations along the Cobh and Midleton lines. A Customer Information System forms the heart of any transit system, enabling individuals to smoothly move from one stage of their journey to the next.



The eight stations are, Carrigaloe, Carrigtwohill, Cobh, Fota, Glouthaune, Little Island, Midleton & Rushbrooke. Works commenced in October 2022 and is expected to be completed over a 12-week period. From the eight stations, works began in Carrigaloe on the western platform digging bases for installation of new ducting for CIS systems. This proved to be challenging as all excavations on the platform are required to be hand dug. Nonetheless, the team preserved and successfully dug out the required bases. Reinstatement to match existing tarmac and ACO channels are progressing well.



Works have commenced to install a new TER compound. 8 no ducts from the existing UTX chamber to a new manhole have been installed. Foundations for the TER room have been poured. A palisade fence and gate were installed along the perimeter of the foundation

The works Little Island & Fota were the same as Carrigaloe. New ducting was installed from the platform to the TER room foundation for future construction. Reinstatement of the tarmac and aco channels are currently underway



Remaining stations are Rushbrooke, Carrigtowhill, Glouthanaune, Cobh & Midleton. The same sequence of works will take place as mentioned previously. Cabling installation for the new ducts will commence imminently.



Global Rail Services has progressed vastly in relation with works for both footbridges at Gormanston & Dalkey Stations. Both footbridges are quickly coming towards completion. The footbridge at Gormanston is planned on track to be opened to the public by December.

In Gormanston great strides have been taken to overcome all previous challenges faced. The facade has been completed; the bricklike finish amplifies the overall look of the footbridge. Due to Global Rail Services having a well experienced workforce, all issues were quickly dealt and addressed in a satisfactory manner. The accessibility lifts on both sides (Up Platform and Down Platform) are nearly complete. The lifts being a major component of the footbridge as it comes close to completion.



During the reinstatement the final picture of the complete footbridge draws ever clearer. Waterproofing of footbridge is scheduled to take place next week. Decommissioning from the compound is on the horizon.

While in Dalkey, after the precast components were lifted in, steelwork has been the focus. The steel roof, protective barriers and handrails are being installed. With this, all the steps should be carefully computed, organised and all the safety needs in order. The installation of the lift will commence imminently. Construction of the hallmark blockwork and the preparation for tarmac is underway on both platforms. Although, adverse weather conditions have effected progress, this has not hindered the overall program of works. All the works have been done under GRS supervision in a safe and good manner, following the specifications, drawings, and agreements with Iarnród Éireann. It goes without saying the completion of both footbridges will be a much-welcomed addition to the respective communities they are situated in.



Global Rail Services

Unit 516a Grants Rise
Greenogue Business Park
Rathcoole, Co Dublin
D24 FH56
Ireland

+353 (0) 1 458 8540

Global Rail Services has proven experience in delivering some of the most exciting projects across a diverse range of service sectors. Our in-house capabilities, our scale and our supply chain partnerships have allowed Global Rail Services to deliver complex multi-disciplinary projects that make a positive difference to our clients, across the Irish infrastructure industry that we serve.



Global
Rail
Services



Iarnród Éireann
Irish Rail

Global Rail Services (GRS) have recently completed ballast retention works at Under bridge UBC193. UBC193 is a masonry arch bridge with masonry abutments and concrete block ballast retaining walls. The existing blockwork abutments were failing.

The works were completed under TIII absolute possession over the October Bank Holiday weekend.

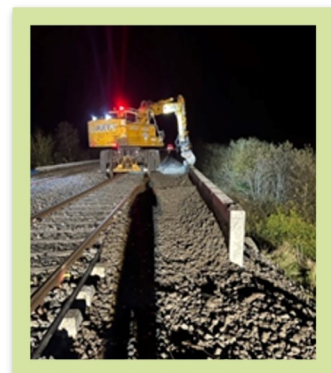
Track access was provided from Lisduff Depot and UB194. 1RRV's, 2 Dumpers 1 x Trailers were required for the completion of the works. For speed and agility, a large portion of the materials were delivered by Road using

Global Rail Services 50t Hiab and lifted to within 50m of the work site. This hugely reduced interference with other worksites also operating on this section of line over the bank holiday weekend.

The works involved the removal of the existing block/concrete ballast retention structures, adjacent to the track that were situated on top of the existing masonry arch bridge over water. The installation of 300mm of lean mix and the placement of 16 number pre-cast concrete L Units each 1.5mx 1.5m by 2m long, weighing 3.2t inside the track support zone.

The project was successfully executed as planned despite the torrential rainfall and high winds, on top of the extremely tight time constraints to procure, manufacture and install the pre-cast units.

Global Rail Services completed the works directly whilst Duffy's provided RRV support. Murphy surveys were engaged by Irish Rail to complete the track monitoring. The section of track that was excavated, had the rail tamper pass through after the works, tracks checked for line and level and the trains back in operation for the following Morning. Many thanks to all involved who worked jointly with **GRS** and several drainage crews in the area to complete the works on an extremely busy line.



A SPECIAL THANK YOU TO

Stefan Aspatjorite, Ollie Brennan, Darren Brady,
Dermot O'Brien & Sebastian Poliana Who
Completed The Project From Start To Finish

Route to Gold

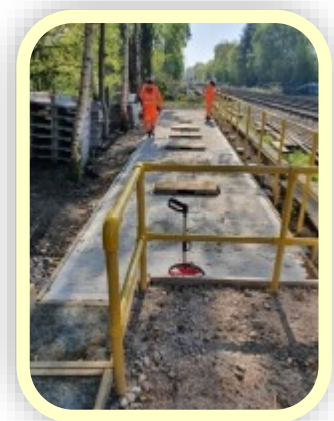
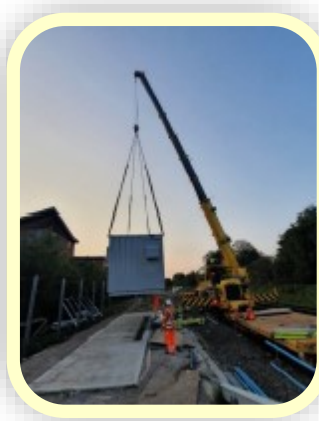
What is Construction Route to Gold?

Route to Gold is a performance measurement initiative within the Southern region Capital Delivery supply chain. The initiative aims to promote collaborative working behaviours, reduce costs caused by re-work and embed a culture of continuous improvement within the rail industry. Our **Global Rail Construction** team was recently commended by Network Rail's Southern Region Capital Delivery and awarded "Gold" for Phase 3 of its Feltham Resignalling Scheme between Windsor and Staines

The Feltham and Wokingham re-signalling project is the renewal of all signalling assets controlled from Feltham Area Signalling Centre (ASC) and Wokingham Signal Box (SB).

Feltham area was last re-signalled in 1974 and the infrastructure was suffering from severe degradation, obsolescence and unreliability. The scope included the multidisciplinary design, installation and testing of equipment for the new signalling system, inclusive of the decommissioning and the recovery of redundant existing structures and equipment.

The project was split up into six phases covering from North sheen to Windsor and Eton, Norbiton through the Ascot area and then running all the way to Earley.



Global Rail Construction Ltd
 - **Feltham Phase 3 Windsor & Staines (Kempton Park)**



A very happy **21st** birthday to Kieron Lickfold (GRCL Apprentice Quantity Surveyor).

Kieron celebrated his milestone birthday with his family & friends.

A very happy **30th** birthday to Tim Lewis (GRCL Engineer).
Tim celebrated his milestone birthday with his family & friends.



A very happy **50th** birthday to Nick Ansell (GRCL Business Development Manager) and Una Tearle (GRCL Administrator) who both celebrated this milestone birthday with their family & friends.

A very happy **60th** birthday to David Vine (GRCL Principal Design Manager).
David celebrated his milestone birthday with his family & friends.



*Congratulations
from The Global Family*

HAPPY RETIREMENT



On August 31, Rita Sheedy, GRS -Accounts and Company Secretary, after 16 years of work and dedication, decided to retire. On the last day of Rita's work, we thanked her with a beautiful gift, flowers and cake, and an invitation to a special dinner on October 16. It was a very exciting day for all of us. In the morning Rita played golf with our golfers and in the evening, we met at the Keadeen Hotel for dinner. She received many gifts from the company and her colleagues, who will miss her with and sense of fun around the office'. We wish Rita a nice retirement and many successful golf tournaments.

Marco Lombardelli (GRCL MD) and Ivan Holloway (GRA CEO) said the following.,

“Congratulations on your retirement. We hope you enjoy every minute, you deserve it. We would personally like to thank you for everything you've accomplished for this company. We hope you enjoy your future with lots of time to enjoy your hobbies, friends and family as much as we've enjoyed having you.”

The Global Infrastructure Group of companies, which have been established since 2001, incorporates – **Global Rail Construction Ltd, Global Rail Services Ltd, Global Rail Australia Pty Ltd and GRA Networks** a subsidiary operating in both Ireland and Australia.

“Our USP is without doubt our people and our long-term strategy will ensure we continue to invest in and develop our people to enable us to deliver our customers expectations, in an efficient and consistent manner”.

FANTASTIC ACHIEVEMENT



Steve Sole, GRCL Electrical Project & Tendering Manager, recently achieved his dream of completing the America Chicago Marathon. Read his story here....

“So, my wife and I planned to visit New York last year for my 50th birthday due to the uncertainty of Covid we decided to wait a year. During this time I entered the ballot for the Bank of America Chicago Marathon, of which I was successful, it is one of six of the world’s largest marathons.

I am no stranger to running marathons, this event was going to be my sixth. In my last two marathons I had a goal time in mind of 3hours 30 mins but due to conditions on the day the goal eluded me. This time, I was determined to achieve two of my dream goals, 1. running a major marathon and 2. hitting my goal time of sub 3hours 30mins.

As a consistent runner anyway, I trained for 12 weeks prior to the event following a specific training plan, running 5 times a week

including a long run every Sunday.

*So, the big day arrived, and I made my way to the starting corral from the hotel at 5:30am for the two hour wait for the starting gun. The atmosphere around me was fantastic, people from all over the world coming together to try and be the very best that they could be for the next few hours. Some would fail, some would not, I had no idea at the time which way my run would go but I had the confidence to go out there and give it my best shot. I ran a few miles with a guy from Auckland, New Zealand but after a while he backed off. I was careful from the start not to go off too quick as this would result in a burn out later. I got to the halfway point in 1 hour 43mins 37 seconds. So far, so good and bang on time. The old cliché, ‘a marathon doesn’t start until mile 20’ is often true, mile 20 came and went, now is normally the time for digging in, 22, 23, 24 all comfortable. By mile 25, I knew the 3:30 was on and the strangest thing happened, my body decided I was going to stop running and walk through a water station taking on water I would normally collect and run with. My mind was screaming ‘come on’, whilst my body was like ‘no, I am walking here’; got to the end of the water station and ran the last 1.5 miles to the finish with a finish time of 3 hours, 28 minutes, and 9 seconds. **Dream achieved.**”*



Great Congrats! Well
JOB! **YOU DID IT** **DONIE**

The World's Biggest Coffee Morning is Macmillan's biggest fundraising event



People all over the UK hosted their own Coffee Mornings on Friday, 30th September. The first ever Coffee Morning happened way back in 1990. It was a rather small affair with a simple idea: guests would gather over coffee and donate the cost of their cuppa to Macmillan in the process. It was so effective, it continued the following year – only this time nationally. Since then, Coffee Mornings have raised over £200 million for Macmillan.

Our **Global Rail Construction** Family hosted their own Coffee Morning and raised over an amazing £500!!

*** Thank You All So Much For Your Kind Contributions ***



**THANK YOU TO OUR THREE BARISTAS
YOU DID A FANTASTIC JOB**

THANK YOU TO EVERYONE WHO SUPPORTED THIS YEAR'S ST ALBANS SLEEPOUT

On Friday 11th November 2022 over 100 people slept outside at Oaklands College, St Albans and at home to raise awareness of homelessness in Hertfordshire, whilst raising vital funds for Herts Young Homeless (**hyh**). It was a truly eye-opening experience and fantastic to see so much support for **hyh** charity and the young people they help.

Overall, the event, at time of print, has so far raised £32,000 for Herts Young Homeless, with the total still increasing!

hyh thanked everyone who took part for making this year's Sleepout a great success and for their continuing support. **HYH** received incredible support from groups of families and friends, youth groups and corporate supporters including: **Global Rail Construction**, MWealth, Glenmark, Sustain Homes, Langley Planning, Echelon and Oliver and Akers.

All the money raised will enable **hyh** to continue to provide their vital services and will make a big difference to the lives of vulnerable young people in Hertfordshire facing homelessness.



A very special **THANK YOU** to the Global Rail Construction Family members Majid Muhammad (GRCL Planner), Sam Cheeseman (GRCL Site Supervisor), Marc Dundas (GRCL E&P Supervisor), Andy Fingleton (GRCL Supervisor), Als Lombardelli (GRCL Quantity Surveyor) and Marco Lombardelli (GRCL Managing Director).

Together you raised over £5k!!!



Supporting Vulnerable People in Hertfordshire

HYH hosted a great quiz evening which included fish supper, sweet treats and drinks. Global Rail Construction rounded up two teams and came together for a night of fun. There was also a chance to win some great prizes in the raffle.

Even though GRCL had two teams, unfortunately, they did not win the overall quiz. However, a fun family evening was had by all.

HYH were very grateful for our attendance and said the following, *“I just wanted to say a huge thank you for coming to our quiz night, I hope you enjoyed the evening as much as we did. It was lovely to see so many of you from Global Rail, the continued support we receive from you is so greatly appreciated. Without the support from people like you our work would not be possible, all the money raised will make a big difference to the lives of vulnerable young people in Hertfordshire and their families.”*

THANK YOU ALL FOR MAKING THE EFFORT ATTENDING THIS EVENT



21st Annual Charity Partners Golf Day 2022



Every year thousands of children across the UK, India and East Africa run away or are forced to leave homes that have become unbearable through poverty, abuse, violence and neglect. Reaching a child as soon as possible is crucial to getting to children on the streets before an abuser can, and before they become entrenched in street life.

The Railway Children charity race to get to children before the streets get to them.

From a rain soaked morning at Shirley Golf Club in 2001, to last year at the Warwickshire GC, this annual golf event has raised a huge amount of money to help thousands of vulnerable and sick children across the country. We may never know the names of who we are helping but we take pride knowing that when the Rail Industry comes together for a common cause, we are 'simply the best' in achieving our goal.

Global Rail Construction attended the annual golf day in September and all had a very enjoyable day. On behalf of the charity, GRCL received the following appreciation comment: *“Just wanted to say a special thank you to Team Global for supporting the Golf Day, we raised an incredible amount of £35,750 on the day. On behalf of our Charity Partners at The Railway Children and Cancer Research UK thanks again for your kind and generous support, it is much appreciated.”*

GOOD CALL REWARD

Recently, GRCL was awarded a high valued contract to upgrade Pooley Green Level Crossing.

The timeframe and scope of the works required the project team to stay focussed and maintain health and safety in order to deliver successfully.

A number of people including the client team, GRCL Site Supervisor, Vas Vancea, and GRCL HSE Manager, Henry Bonuah identified

Lee Cresswell and Lucian Keresetzi working in good spirit and with health and safety as the priority.

These individuals were therefore nominated for awards in accordance with GRCL process.

*** THANK YOU LEE & LUCIAN ***



Vas Vancea (GRCL Project Manager) (L) presenting Lee Cresswell with his reward



James Sykes (GRCL Project Manager) (R) presenting Lucian Keresetzi with his reward



Jim Cuell (GRCL Commercial Director) (R) presenting Mark Parker with his reward

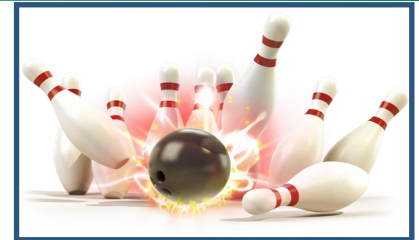
CONGRATULATIONS

Mark Parker
(GRCL Construction Manager)
10 Years Service

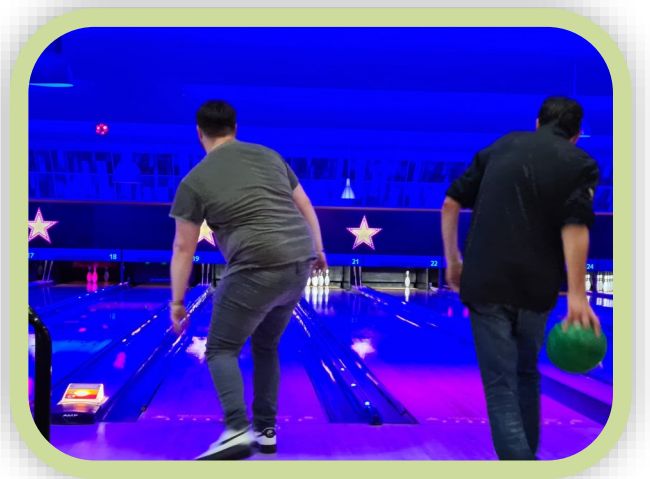
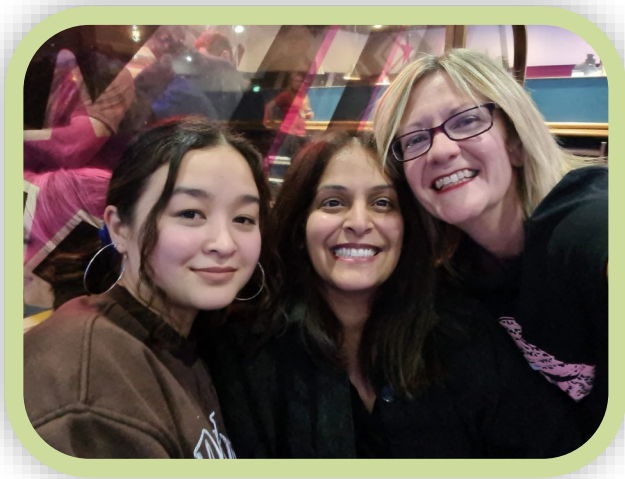


Global Rail Construction Ltd (GRCL) were delighted to celebrate the 10 Year Anniversary of GRCL Civils Construction Manager, Mark Parker. Mark has provided managerial services to GRCL over the course of the last 10 years and is able to deliver complex and challenging contracts whilst providing invaluable guidance and support to our project teams.

We would like to take this opportunity to thank Mark for his continued professionalism and commitment when engaged with ourselves and look forward to working together on future projects.



The **Global Rail Construction** Family enjoyed an evening out to the local bowling alley.
Lots of fun, food and drinks were had by all
Lots of drinks, pizzas and laughs made it a very fun evening.
They were all winners.....



SHARE YOUR NEWS

Tell us what's happening or send us your pictures or videos.

globalnews@grcl.co.uk

Caring Contractors

Giving Back To The Community at Feltham

Recently our GRCL team on the Feltham to Wokingham Resignalling Project volunteered their time to support the local community undertaking improvements at three local schools in Egham with client Atkins and a number of other supply chain partners.

As a company, Global Rail Construction places people at the heart of what it does, from employees, clients and supply chain partners, to neighbours and the wider community and looks to maximise the benefits to local communities in areas where it operates, so we were delighted to support this worthwhile cause.

Ann Wheeler, Headteacher at Manorcroft Primary School, said: ***“We wouldn’t normally be able to afford these kinds of works so we are really grateful to the volunteers for giving up their time to do these improvements for us, they have been fantastic. The children will love having these newly refurbished areas to use as breakout space, intervention areas and small group learning and will make good use of it.”***

It’s important that we give back to the communities we work in, and volunteering at a local charity or doing improvements to a school or community centre are great examples of how we can play our part. Please get involved with volunteering opportunities on your projects – and if none exist yet, why not take the lead to create one of your own?



Global Rail Construction

SHARE YOUR NEWS

Tell us what’s happening or send us your pictures or videos.

globalnews@grcl.co.uk



Welcome To The Global Family...



Ivan O'Reilly
Purchasing & Procurement
Officer



Cain Gore
Rail Supervisor



Ruvinisha Kannangara
IT Manager



MD AL Jaber
Accountant

The Global Infrastructure Group of companies, which have been established since 2001, incorporates – **Global Rail Construction Ltd, Global Rail Services Ltd, Global Rail Australia Pty Ltd and GRA Networks** a subsidiary operating in both Ireland and Australia.

“Our USP is without doubt our people and our long-term strategy will ensure we continue to invest in and develop our people to enable us to deliver our customers expectations, in an efficient and consistent manner”.



Global
Infrastructure
Group

A Leading Provider Of Turnkey Solutions
For The Rail Industry



Railway
Construction



Civil
Engineering



Telecomms



Multi-Utilities



Power
Networks



General
Construction



Design and
Consultancy

Combining technical and innovative excellence with a
real passion for detail and safe delivery of projects

www.theglobalinfrastructuregroup.com