



Global
Infrastructure
Group

Issue 36 2023

GLOBAL NEWS



In This Edition.....

- * Project News**
- * New Starters**
- * Celebrations**
- * A Day In The Life...**



globalnews@grcl.co.uk

Foreword

Welcome to another edition of the Global News Magazine, and I am sure you will all agree that this publication provides valuable updates to the Global Infrastructure Group and is a fantastic mechanism by which the different organisations can keep up to date with what is going on across the GIG Family.

It is evident from reading the updates from across the group in this edition that our project teams are involved in the delivery of some truly exceptional works. All being delivered across various climates, demanding environments and not to mention time zones!

This is a testimony to our behaviours, experience and in particular, our people who support and continue to enhance our service delivery across the group. Whilst enjoying our various successes there is always a need to continue improving our business and our people so that we will always be considered for key opportunities and continue to be the partner of choice to our clients.

As a group, we believe that it is vital to continue to invest in and develop our staff to enable us to deliver tomorrows expectations, today. Global Infrastructure Group seeks to empower its people to grow, develop and achieve their full potential whilst providing the platform and support to enable this growth potential. We take our responsibilities seriously and have always operated a policy that incorporates a programme of continuous improvement and on-going staff education and development.

I am pleased to see that our Apprenticeship, graduate recruitment and on-going staff education programmes are going from strength to strength and this investment will continue as we seek to develop the next group of young professionals into the business. These programmes really are the lifeblood of the businesses and their importance cannot be overstated to the future of the Group. It is very satisfying to see how a number of our staff that have been through these schemes are now an integral and influential part of our Project Delivery Teams across the whole business. We look forward to working alongside the next generation of future professionals across the whole business in the coming months/years and am sure that we are all able to see the benefit of the investments being made in the area of training and development.

Of course, none of the above and the success that the Company has experienced to date could be fully appreciated without the full support, hard work and commitment of all our staff, supply chain and partners who often face difficult challenges, work through adverse weather conditions whilst often sacrificing time with their families to ensure our business objectives are delivered professionally, safely and in a consistent manner. This is real testimony of our commitment to our core principles and culture enhanced by working together and with others to achieve our defined objectives.

We are particularly proud of our history to date and in particular how our wider team continues to execute our objectives and responsibilities in such a positive, pro-active and inclusive way. These responsibilities are ever changing and as we plan for a future, where the current projections forecast warmer and wetter winters coupled with hotter and drier summers, we must consider how we can aid the fight against global warming.

As we are increasingly being engaged by our clients earlier in project lifecycles, we are more able to challenge conventional design practices and to help find more environmentally friendly design solutions which will actively reduce the level of carbon emissions for our projects. However, we should also be mindful of our collective responsibility to make the conservation of energy a daily part of our routine and consumer choices. As the world continues to experience the terrible consequences of the warming effect, with the recent devastating wildfires in Hawaii, Canada and Greece, we are never far from a timely reminder of why all our decisions in this regard, are so vital. As a business we must constantly challenge and review our processes and working practices in order to reduce our impact on climate change and this is more important now than it has ever been.



We are now going in to a particularly busy period across the group both in terms of tendering opportunities and on secured projects and this is where historically we are able to excel as a business, as we work collaboratively as part of a greater team in a responsible, passionate and professional manner to collectively deliver a first class service to our clients.

We work on behalf of a number of clients with a truly global reach and it was good that the GIG were able to support one of these clients with a recent tender for a significant package of works on the Cork Re-Signalling Scheme in Ireland. The UK and Ireland estimating and construction teams worked well together to develop and submit a compliant bid to our client. The good news is that our client has since secured the package of works and Post Tender discussions are ongoing.

Thanks to you all for your commitment, determination and dedication across the whole Group and as a result, we are going from strength to strength at a time when we are looking to strengthen our discipline delivery capability.

Hope you enjoy the read.

Jim Cuell
Commercial Director



Passionate

Committed in heart and mind to whole-heartedly embrace our core values and culture, without exception.



People

Growing our organisation from within, promoting and empowering our people, inspiring them to be the best they can be.



Professional

At all times we act with integrity, providing quality service, reliably and responsibly.



Teamwork

Working collaboratively whilst supporting and respecting each other's views.



Responsible

To consistently deliver quality, on time, safely and to budget whilst protecting our communities and the environment.





ATKINS

Member of the SNC-Lavalin Group

Global Rail Construction Limited (GRCL) has been successfully delivering a multi-disciplinary rail sub-contract on behalf of valued client Atkins Global, in support of Network Rail's Feltham to Wokingham Resignalling Project and specifically covering Phases 3, 4 and 5. During a 52 hour possession, our GRCL project teams including partners concluded on time, their final scope of works, which enables the final system checks to be made prior to the main commissioning - whereby Atkins plan to bring the new rail system into service during the twelve day blockade in August.

GRCL's works included:

- ♦ Civils – Installation of speed sign foundations and associated signage throughout the worksite
- ♦ E&P - 650v Camlin systems testing, handover and assurance checks
- ♦ Signalling installation – signal head alterations and alignment works, QIF checks and test log clearance

Thank You To Our Teams & Delivery Management For Their Collaborative Approach, Diligence & Hard Work - Enabling A First Class, Timeous Multi-Functional Installation

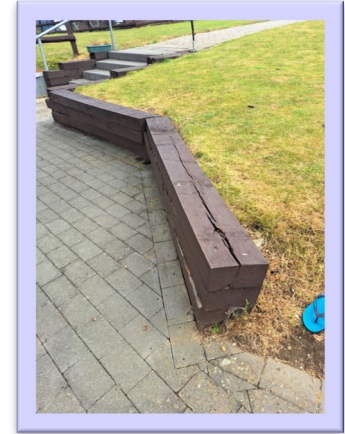
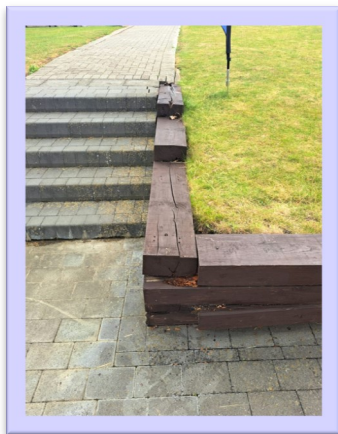




Some of our **Global Rail Construction** team have been supporting key client Atkins Global in Wraysbury by volunteering their time to Access Adventures - a wonderful charity, who deliver life-changing adaptive sports and activities. Their services are designed to challenge expectations and build self-confidence for people with disabilities.

Members of the GRCL team replaced timber sleepers and handrails to provide safe and secure access from their clubhouse to the lake.

**A Very Special THANK YOU To
Chris Hick, Sean Maher & Jeff Knight For Volunteering Their Time**



**Thank You Team
For The Excellent Workmanship**



ATKINS

Member of the SNC-Lavalin Group

Global Rail Construction Ltd (GRCL) working on behalf of client Atkins Global and delivering Coltishall & Belaugh Level Crossing Renewals, has successfully completed on time, and without incident, the following works:

- ♦ Running power and telecoms cables using Road Rail Vehicles (RRV) between the two level crossings.
- ♦ Extending vortok fencing to allow the team to run local cables during the traffic hours.
- ♦ Successfully landing the Relocatable Equipment Building (REB).
- ♦ Installing a Traffic Light (RTL) base at Coltishall Level Crossing.

**Many Thanks To The Entire Team
For The Safe & Secure Delivery Of These Works**





Global Rail Construction has recently completed the final installation phase of the new driver walkway and driver access platform lighting at South Harrow Sidings on behalf of TfL Track Delivery Unit (TDU) and the Piccadilly Line Upgrade Programme (PLU). A really collaborative effort with TDU, with the final NOWRI (Notice of Works Ready for Inspection) jointly undertaken between GRCL/TDU and the TfL end user representatives.



Our vision is that everyone arrives for work healthy and leaves for home safely, everyday.

The Global Infrastructure Group are globally engaged in a whole spectrum of markets, offering solutions specific to our client needs.

The nature of our high-value services means we are involved in complex projects. These projects often require a combination of our activities and services in order to deliver the optimum result for our clients.

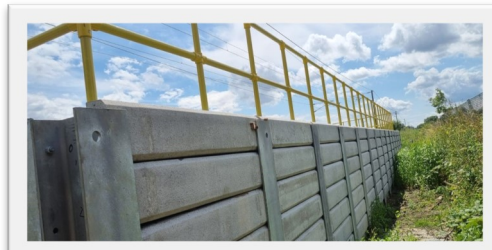
Recognising that each industry and sector of activity has its own processes, we offer solutions specific to our clients needs.



Our **Global Rail Construction Limited** (GRCL) team is delivering a long-term civils sub-contract project for the Cambridge Resignalling Scheme with key client Alstom - on behalf of Network Rail.

As part of this project, GRCL has recently completed Milton Fen SMIO base and retention works.

The below images show high quality installation works in delivery of this package of work.





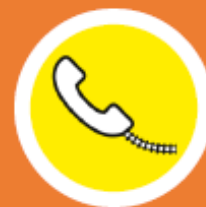
As part of the Daventry International Rail Freight Terminal (DIRFT) private terminal signalling scheme for Fenix Rail Systems, **Global Rail Construction** successfully completed 34 No precast concrete signal bases and a new cable gantry over the terminal entrance, in readiness for the signalling installation.

A timely result and another high quality installation from our team.



IMPORTANT UPDATE:

SCO 24/7 Accident / Incident Reporting



The Network Rail SCO 24/7 Accident / Incident reporting system is closing on the 28th July 2023.

From Friday 28th July all safety / environmental accidents or incidents that occur on Network Rail Capital Delivery Eastern Projects should be reported to the appropriate Route Control.

Any close call that occur on Principal Contractors site should be reported via that Principal Contractors own close call reporting process.

If there are any Network Rail infrastructure faults or Network Rail close calls that need to be reported then normal reporting processes should be followed.

When contacting Route Control you will need to provide the following information:

- Your name and contact details
- The name of your employer and their contact details
- The company name of the Principal Contractor
- The project name and project number
- The location where the incident occurred
- The nature of the incidents
- Any immediate action taken
- Inform Route Control that the Principal Contractor will manage their own care plans for any injured person(s)

For Network Rail Route Control numbers you will need to contact the Network Rail Project Team you are working with.

UPDATED: Reporting Process

Safety or Environment Incident Occurs

STEP 1



Report to Route Control immediately

STEP 2



Within 24 hours IRIS event opened and Fast Facts produced

STEP 3

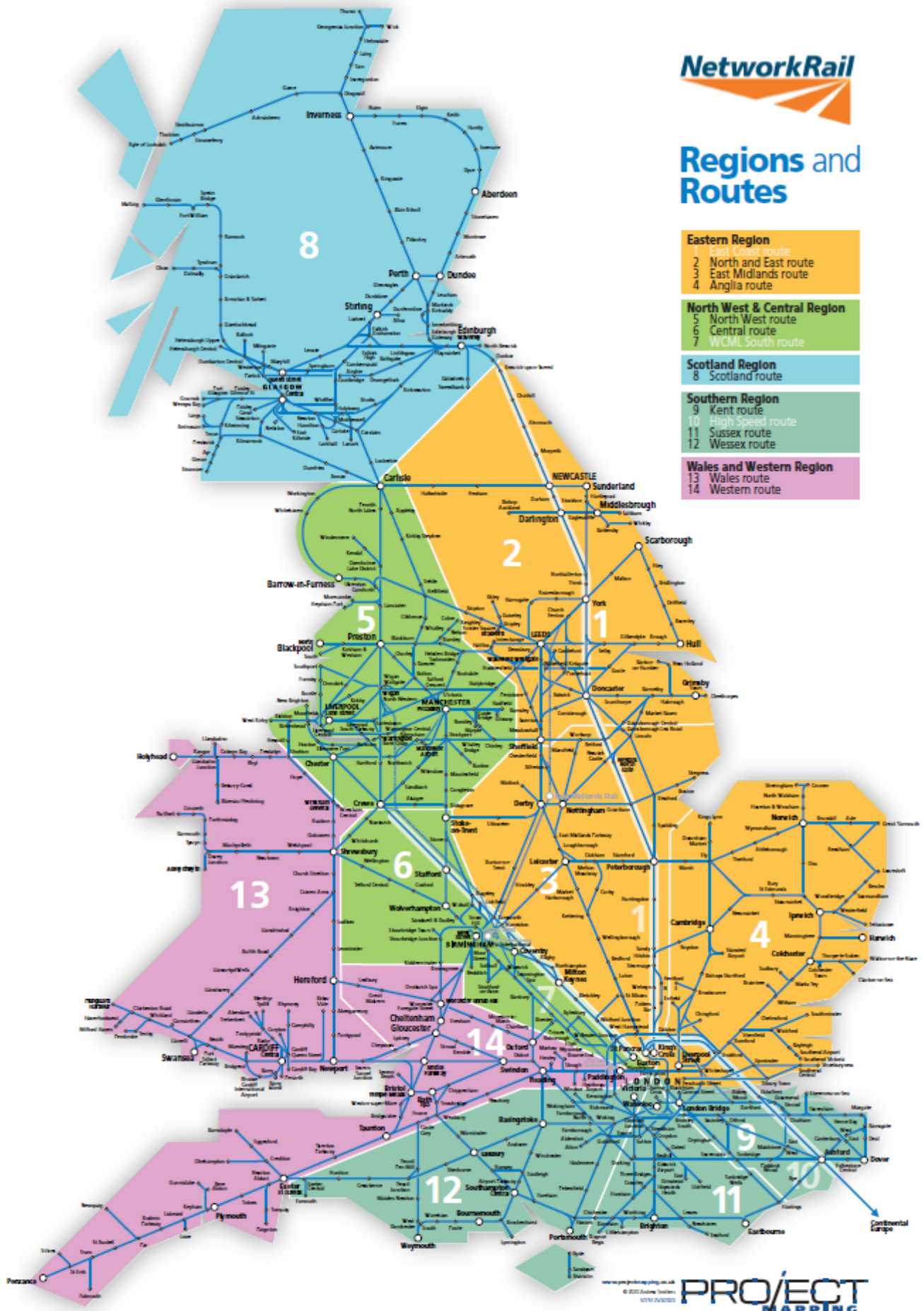


Within 7 days the level 1 investigation should be completed on IRIS



Regions and Routes

- | |
|--|
| Eastern Region |
| 1 East Coast route |
| 2 North and East route |
| 3 East Midlands route |
| 4 Anglia route |
| North West & Central Region |
| 5 North West route |
| 6 Central route |
| 7 WCML South route |
| Scotland Region |
| 8 Scotland route |
| Southern Region |
| 9 Kent route |
| 10 High Speed route |
| 11 Sussex route |
| 12 Wessex route |
| Wales and Western Region |
| 13 Wales route |
| 14 Western route |



www.projectmapping.co.uk
© 2011 Project Mapping
01753 290201

PROJECT
MAPPING



Global
Rail
Construction

Safety Stand-Up

Safety Stand-Up at Coltishall & Belaugh Site

Henry Bonuah, (GRCL HSE Manager) participated in the safety stand-up session organised between Network Rail, Atkins and Global Rail Construction Ltd (GRCL) on 01st August 2023.

GRCL and our clients demonstrated that where safety is thought of and lived, there is always the way to bring it to the fore.

A big thank you to our Network Rail and Atkins representatives who contributed to the session and made the team on site feel appreciated and determined to make the project a success.

Thank you also to the GRCL management team on site for their hard work.

Your Commitment & Support To Make Safety A Priority Is Very Much Appreciated



A DAY IN THE LIFE OF

In this issue, we meet Adolfo Gordon Blasini – Telecommunications Technician, for Global Rail Australia

What are you passionate about?

Travel—I love to travel and learn about new places.

What personal achievements are you most proud of?

Reaching the Australian Permanent Residency Status, just on the age borderline, and later became an Australian citizen.

What advice would you give to your younger self?

Be money wise and finish my University Degree (I finished a technical degree).

If you won a million dollars, what would you do?

Easy— pay the mortgage, help family and have a good holiday.

Who do you most admire in life?

My Dad— he came to Venezuela with empty hands and a medical degree. He became one of the best general surgeons in Venezuela.

Who do you enjoy spending time with?

Spending time with my wife and nephews.

When you were a child, what did you want to be when you grew up?

I wanted to be a professional goalkeeper but a knee injury killed that dream.

What is your favourite music?

Pop music.

What are your hobbies and how did you get into them?

I collect baseball stuff like cards, figurines, autographed balls, and bats. But being in Australia, the collection has stopped as baseball is not followed here, and it is very hard to find anything that is not expensive.

I loved the 1966 'Batmobile' and have several models. Also, doing jigsaw puzzles relaxes me.

If you could travel anywhere, where would you go and why?

Being a huge fan of roller coasters and baseball, the place is USA! I also love cruises.

What are you most afraid of?

To be honest, dying and leaving my wife alone. Also I don't like earthquakes!

What is your strongest quality?

The ability to help and be nice to the people I care about.

What was your most embarrassing moment?

I can't forget the time I was answering questions on a TV show, and I finished almost naked, as my buzzer wasn't working.

What teacher in school made the most impact on you and why?

My mathematics teacher in high school, Efrain Hurtado. He used to give me hard tests for homework. Sometimes I had to solve them on the blackboard to the whole group. Later I started to do private classes for students.





ISO Accreditations

Global Rail Australia pass annual ISO accreditations for 45001, 14001 and 9001

Global Rail Australia has again achieved its accreditation for HSEQ – Occupational Health and Safety, Quality and Environmental Management – through completion of their triennial audit in compliance with:

- ♦ ISO 45001:2018, (Occupational Health and Safety Management System);
- ♦ ISO 14001:2015 (Environmental Management System) and
- ♦ ISO 9001:2015 (Quality Management System).

This great result was accomplished with no non-conformances, no observations or improvements raised. **A great success from all concerned.**

As Australian businesses, we aim to comply with all relevant legislation as a minimum and work towards recognised good practice in sustainability and corporate responsibility.

We are committed to providing a healthy and safe environment for our employees in which to work through the implementation of an effective occupational health and safety management system.

Quality is built into our projects and we carry out a review of the initial requirements to determine the impact of our operations, and also the selection of materials and waste management.

We recognise and respond to the challenges and opportunities that are presented by climate change and we aim to manage our environmental footprint and enhance our performance in areas where we operate. We also look to maximise the benefits to local communities in areas where we operate.

Global Rail Australia always looks to develop internal and external awareness of our corporate responsibility and continue to recruit, train, develop and retain the best available workforce.

Global Rail Australia

5 Plane Tree Avenue
Dingley Village
Vic 3172
Australia
+61 (0) 3 9551 0465

Global Rail Australia

has proven experience in delivery of the most exacting projects across a diverse range of service sectors.

Our in-house capabilities, our scale and our supply chain partnerships have allowed Global Rail Australia to deliver complex multi-disciplinary projects that make a positive difference to our clients across the Australian infrastructure industry that we serve.

Global Rail Australia (GRA) has been contracted on behalf of VicTrack, to upgrade and install a new Lad-Saf (Flexible Cable Vertical Safety System) on existing monopoles and lattice towers. There are 126 sites in Victoria, and the sites are located across the Victoria train networks. As per the metropolitan station, all sites are divided in groups, and there are 11 groups for this particular project.

GRA supplies all aspects of installation works from Riggers who are experienced in Lad-Saf projects. Liaising with the VicTrack team, GRA team, and Site Security to plan and coordinate this upgrade and installation work, which is a very important part to deliver this Lad-Saf (Flexible Cable Vertical Safety System) work.

Delivering materials, working at heights, removal and installation of new ladders, inspection plates, kits for rug ladders, cables, and installation kits for monopole (6116634), and lattice (6116633), have all been part of the scope.

This proved to be very demanding with a focus on each step running as smoothly as possible, as per the scope of work from VicTrack, and site access process requirements. We ascertained that these sites can be quite challenging sites, due to the weather conditions endured.

The works involved:

- ♦ Delivering all installation kits, materials, and equipment required planning and logistics to complete the delivery, by coordinating with the VicTrack team, as it needs processing lead time before accessing the site.
- ♦ All installation is required as per the installation manual with VicTrack Standards.
- ♦ HOP submission as per the VicTrack Standard. Tower Anti Fall Certificate of Completion.
- ♦ Re-sizing cable as per the lad-safe system.
- ♦ Providing all OHS/HSE standards, and submission of post-completion documentation on the Client submission portal (site handler).

Scope as follows: -

- ♦ Installation of Lad-Saf on 126 Sites in Victoria.
- ♦ Installation of new Lad-Saf (Flexible Cable Vertical Safety System) on the existing monopole and lattice tower.
- ♦ Install new inspection plates and cable as per the Lad-Saf system.
- ♦ Provide post build HOP pack.
- ♦ Provide Tower Anti Fall Certificate of Completion.



Lad-Saf System (Steel Monopole)



Lad-Saf System (Lattice Tower)





GRA Networks, and their Power Infrastructure team, has been successfully delivering a complex civil, structural, and building contract to support a vital new substation project for valued client Zinfra, who build, operate, and maintain energy infrastructure assets in Australia, and are one of a number of valued clients, whereby our teams support their projects through a comprehensive range of engineering, project management, construction, operation and maintenance delivery services.

The project commenced in April 2023, in order to supply customer - energy asset owner and operator, Jemena Electricity Networks - with a new substation in Brooklyn. The new substation will be staged with the initial load supply expected to be supplied by August 2023, with project commissioning due in September 2023.

Jemena has been working to establish a power supply at the Brooklyn site, which falls within their distribution service area boundary. The customer has requested capacity to support a 33MVA maximum demand initially, with an ultimate capacity to support a maximum demand of 99MVA, both with N-1 redundancy.

GRA Networks has delivered all civil, structural, and building works at the substation on time, meeting all safety and quality requirements in accordance with the relevant project standards, including the selection of all equipment and materials. All components have been supplied new and are of a proven quality and suitability for this project.

All aspects of the civil and structural works have been constructed to provide a low maintenance durable end product, suitable for the purpose intended and taking cognisance of the environmental impacts of all elements of work in the substation area.

GRA Networks has delivered this significant project by investing their power and infrastructure expertise, progressing works on time, with no safety incidents or concerns.

Global Rail Australia Pty Limited's civil and structural engineering capabilities take full project responsibility and offer a fully managed service for clients within the built environment. We provide civil and structural engineering solutions from initial project planning and design, to enabling works covering site surveys, hazard and environmental assessments, procurement, onsite construction, and equipment installation, through to final commissioning.

We are flexible in our approach and can undertake civil engineering projects on a turnkey, consultancy, main contract, sub-contract, or resource supply basis to meet each individual client's requirement.

Global Rail Australia apply our skills to new build, refurbishment and maintenance projects, our activities include:

- ◆ Design including temporary works
- ◆ Condition and dilapidation surveys
- ◆ Demolition and remediation
- ◆ Combined service routes
- ◆ Services enabling and diversion works
- ◆ Bridge replacement and refurbishment
- ◆ Ground and site investigation
- ◆ New build and refurbishment
- ◆ Road construction
- ◆ Embankment works and retaining structures



Global Rail Australia

5 Plane Tree Avenue
Dingley Village
Vic 3172
Australia
+61 (0) 3 9551 0465

Global Rail Australia has proven experience in delivery of the most exacting projects across a diverse range of service sectors. Our in-house capabilities, our scale and our supply chain partnerships have allowed Global Rail Australia to deliver complex multi-disciplinary projects that make a positive difference to our clients across the Australian infrastructure industry that we serve.



Malin Head Antenna Upgrade Project

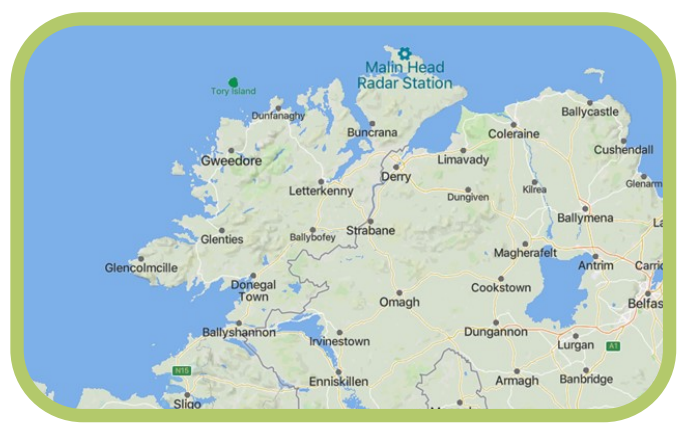
GRA Networks have undertaken an antenna replacement project for Airnav (formerly Irish Aviation Authority) at their transatlantic station at Malin Head Co Donegal. Airnav provide air traffic management services in the 451,000 km² of airspace controlled by Ireland. This airspace forms a crucial gateway for air traffic between Europe and North America.

GRA provide a maintenance and build support service throughout Ireland, across all Airnav airport communications infrastructure. The project at Malin Head consisted of new duct infrastructure, new cable and antenna installation including cable management.

Malin Head Radar Station is located on one of the most northerly parts of Ireland looking out to the North Atlantic Ocean



Malin Head Radar Station



Malin Head Radar Location

New duct infrastructure between the Radar Building and the communications tower located within the Radar Site.





Cable and Antenna Installation



The project consisted of the installation of 10 new cables and antennae mounted at various points across the tower structure.
The new cables are terminated in the communications room within the Radar station.

Internal Cable Installation and Termination



Each cable is fitted with a surge protector and grounded through the internal earthing system in the Radar building.
The new system was tested and commissioned by GRA Engineers.

GRA NETWORKS IRELAND

offer infrastructure contracting services on a design and construct basis in the transport, telecommunications, utility and energy sectors, providing cost-effective solutions to complex problems



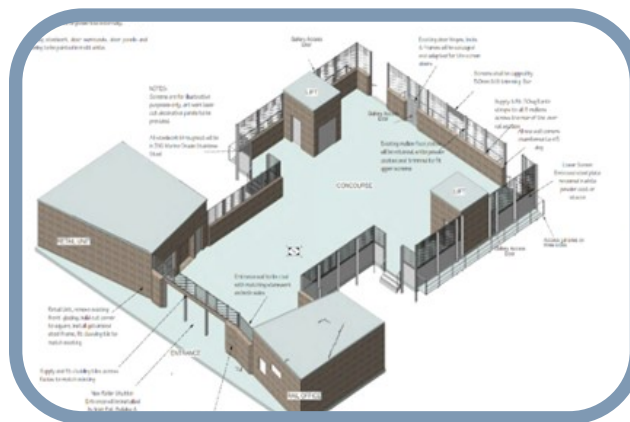
Clongriffin Station, Co Dublin

We are excited to share updates on a significant project that has been underway at Clongriffin Station in Co Dublin.

Addressing recurrent incidents of vandalism that impacted the station's glass facades, Global Rail Services has taken on the challenge of implementing a robust solution to enhance both safety and aesthetics.

These efforts align closely with the specifications outlined by Irish Rail, aiming to create a lasting and impactful transformation.

The site at Clongriffin train station, has access available from Station Street and via the front plaza area. To ensure minimal disruption to passengers and Irish Rail personnel, a dedicated site compound has been established within the front plaza, safeguarding the station's continuous operation.



The project's core objective is to replace the damaged glass panels on the existing facades. To achieve this, a two-fold approach has been undertaken. The lower structure was meticulously designed to support the stone cladding, while the upper section features a steel perforated panel, enhancing airflow. Notably, the rear section of the station boasts unique and beautifully 'wave' and 'chevron' crafted white finished laser-cut decorative panels.

The project commenced with the careful removal and proper disposal of the existing glazing. These glass panels, located on all sides of the station, varied in height from 2.8m to 4m and width from 0.5m to 2.5m, with a total of approximately 45 panels.

To ensure passenger safety, a designated area was cordoned off using Heras fence panels. Within this space, specialized equipment including a spider lifter with glazing lifters and platform ladders facilitated the secure removal of existing fixings. Once extracted, each glass panel was gently lifted onto a bogey and transported outside the station under the guidance of pedestrian marshals.



Upon installation, the stone cladding, aligned with the station's existing design, was meticulously affixed to the steel purlins. Subsequent cleaning and polishing have rendered the entire area aesthetically enhanced and visually appealing.

To facilitate the project's execution, an encompassing scaffold structure enveloping the building's external facade was erected. This scaffold was fortified with shrink wrap and earth bonding, demonstrating a commitment to safety. An intricately planned erection sequence, closely coordinated with Irish Rail's permanent way and OHLE isolation teams, ensured smooth coexistence with concurrent works. This collaboration not only improved efficiency but also reduced environmental and noise impacts, ultimately leading to an exceptional final product.



Work progressed meticulously in sections, with pedestrian barriers effectively demarcating the work zone from passenger areas. The presence of a dedicated pedestrian marshal provided an additional layer of safety and organization. Clear signage strategically placed throughout the area guided train passengers and highlighted potential new risks and hazards. The installation of plywood timber between existing mullions further ensured safety and completion of the project to the highest standard.

The Clongriffin Station Enhancement Project exemplifies Global Rail Services' commitment to innovation, safety, and community enhancement. This transformative endeavour not only mitigates safety concerns but also contributes to the station's visual appeal and overall passenger experience. We are excited about the positive impact this project will have for all who utilize Clongriffin Station.

**Thank You Team
For The Excellent Workmanship**

Global Rail Services

Unit 516a Grants Rise
Greenogue Business Park
Rathcoole, Co Dublin
D24 FH56
Ireland

+353 (0) 1 458 8540

Global Rail Services has proven experience in delivering some of the most exciting projects across a diverse range of service sectors.

Our in-house capabilities, our scale and our supply chain partnerships have allowed Global Rail Services to deliver complex multi-disciplinary projects that make a positive difference to our clients, across the Irish infrastructure industry that we serve.

Connolly Station, Co Dublin

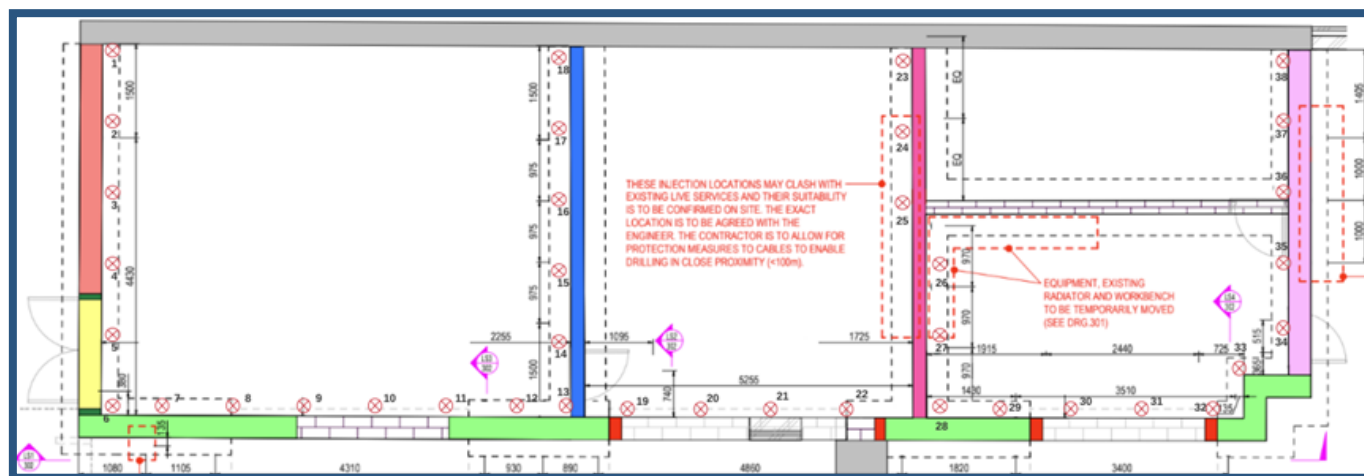
We are excited to provide an update on the ongoing project aimed at enhancing the infrastructure and functionality of the Central Traffic Control (CTC) Building. The project's objective is the redevelopment of an adjacent plant room into a modern server and equipment facility.

Our dedicated team has been hard at work, making significant progress in various aspects of the project. Structural repairs to the masonry and foundation stabilization have been executed, laying the groundwork for the upcoming phases. A new raised access floor will be installed to facilitate the development, and our experts are overseeing the general electrical installations, including lighting, fire alarms, fire suppression systems for the Generator Room, and an earth system.

Additionally, the mechanical aspect of the project, a new installation of a new under-ceiling mounted split AC unit.

The project site, located at the Central Traffic Control (CTC) Building, Connolly Station, Amiens St, Dublin 1, is accessible through the Connolly Station car park off Sheriff St Lower. Controlled access is being efficiently managed by the CTC Building security personnel, ensuring a secure and organized work environment.

Given the building's housing of safety-critical equipment, we have enlisted the expertise of a monitoring/surveying consultant who is continuously assessing and managing the noise levels generated by construction activities. This proactive approach is essential to prevent any disruptions to safety-critical communications within the Central Traffic Control building operations.

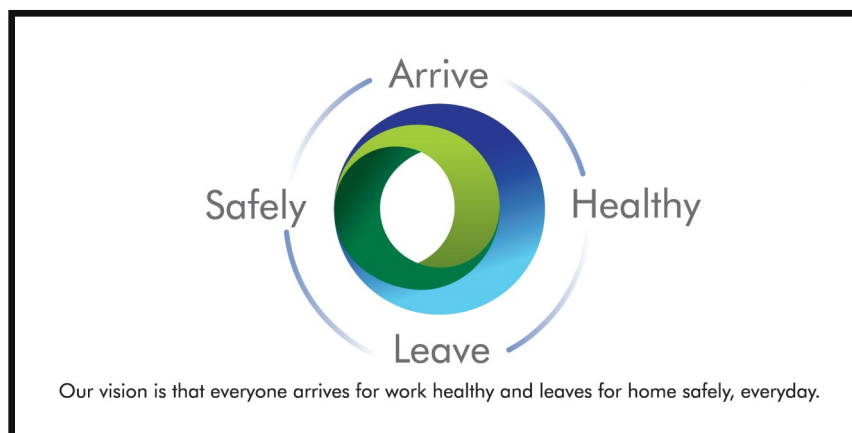


In addressing the stabilization of the building's foundations, our team will be implementing a process based on the specifications for the application and use of expansive geopolymers. This technique involves injecting a multicomponent material to enhance load-bearing capacity and remediate settlement-related issues. Throughout this process, Global Rail Services remain committed to ensuring the operation of services within the building. Relevant parties, and local authorities guarantees the safeguarding of pertinent services. Skilled operators will be utilizing appropriate locating devices to accurately determine the positions of cables and pipes.

Global
Rail ConstructionGlobal
Rail ServicesGlobal
Rail AustraliaGRA
Networks IrelandGRA
Networks Australia



Masonry repairs are well underway, with the implementation of structural crack stitching on interior walls. Exterior walls surrounding the building are also being addressed, with careful traffic and pedestrian management measures in place to facilitate the installation of wall tie connections. These connections are being strategically arranged to connect to the existing cavity wall, and part of this process involves the removal of brick panels. As we continue to work diligently on this multifaceted project, we remain focused on our goal of enhancing the functionality and infrastructure of the CTC building. We are committed to ensuring the project's success and contributing to the improvement of this crucial facility. Stay tuned for further updates as we make progress towards the project's completion.



The Global Infrastructure Group of companies, which have been established since 2001, incorporates – **Global Rail Construction Ltd, Global Rail Services Ltd, Global Rail Australia Pty Ltd and GRA Networks** a subsidiary operating in both Ireland and Australia.

“Our USP is without doubt our people and our long-term strategy will ensure we continue to invest in and develop our people to enable us to deliver our customers expectations, in an efficient and consistent manner”.

10

CELEBRATING

YEARS

A very proud and exciting moment for both Global Rail Australia (GRA), and Craig Gibson (GRA Telco Manager), who is the first employee from GRA to celebrate **10 years** with the company.

Thank You Craig For Your Loyalty & Support



*Ivan Holloway (L) (GRA CEO) presenting
Craig Gibson with his
10 Year Service Award*



HAPPY BIRTHDAY

A very Happy **60th** Birthday to Sean Maher
(GRCL Operative)
who celebrated his birthday in August.

We all hope you had a wonderful time celebrating this milestone birthday



HAPPY BIRTHDAY

A very Happy **40th** Birthday to Richard Horsted
(GRCL Senior Design Manager)
who celebrated his birthday in August.

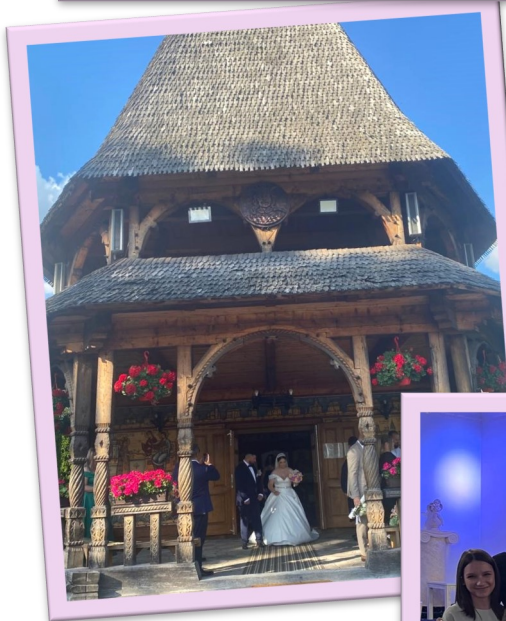
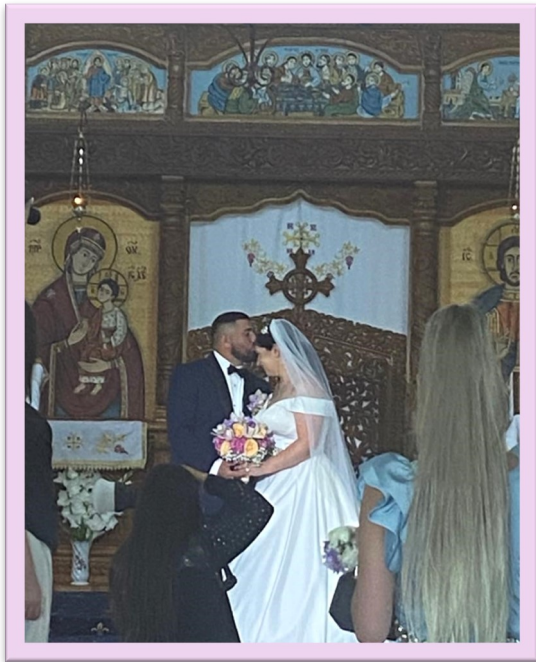
We all hope you had a wonderful time celebrating this milestone birthday

Congratulations

Congratulations to Mihai Vadas (GRCL Operative) and his beautiful wife Raluca who celebrated their wedding in Romania on the 29th July 2023.

Some of the Global Family were also in attendance.

Lots of food, beverages, good times and good memories were enjoyed by all.



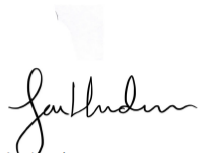
FORS Silver

Global Rail Construction Ltd
(Hatfield)

has been assessed and has met the Silver level requirements of the Fleet Operator Recognition Scheme (FORS).

Single Operating Centre Accreditation applies to the following location only: AL10 9EW

This certificate is valid from 23/05/2023 to 22/05/2024 and remains valid as long as FORS requirements continue to be maintained.



Ian Henderson
on behalf of the Fleet Operator Recognition Scheme

FORS ID : 001092
Page 1 of 2



Having FORS accreditation has been instrumental in guiding our UK business and assisting it to develop, implement, maintain and continuously improve its systems and staff development.

For instance, the driver training and development through the FORS CPC training for VRU and Low City, has helped the drivers professionalism and improved safety and environmental awareness.

The professional development we have witnessed and gained via the FORS practitioner modules, classroom training and e-learning has been amazing and we are proud to employ an exceptional team of people, who support the business as it grows and prospers.

**Thank you to Tony Nieli
(GRCL Plant & Vehicle Co-Ordinator)
who assisted with this accreditation**

POSITIVE INTERVENTION



**Debbie Cambridge (L) (GRCL
H&S Coordinator) presenting
Dave Johnson with a
Thank You Card & Vouchers**

Whilst working on our Cambridge site, Dave Johnson (GRCL Operative) noticed a member of the public walking along trough route from trackside. Dave reported this to the COSS on site, who in turn, spoke with the individual and removed them safely off track.

The public member, who was an elderly lady, had very broken English and stated she was lost and looking for a train station.

After checking she was ok she was taken to nearest train station. The Signaller was informed as a matter of courtesy incase any trains had been stopped as a result of this.

**Thank you Dave for your positive intervention
- this outcome could have been very different -**



Our vision is that everyone arrives for work healthy and leaves for home safely, everyday.



Supporting Vulnerable People in Hertfordshire

Herts Young Homeless (hyh) recently celebrated their 25th Anniversary with a Midsummer Gala Dinner in the beautiful surroundings of St Michael's Manor Hotel in St Albans.

Global Rail Construction were very proud to be one of the corporate sponsors of the Gala Dinner. Lots of fun was had with auctions, raffles and games, lovely food, and a few beverages! The evening was both celebrating the successes that hyh has had during its lifetime but also to reflect on the sadness that they are still needed.

We all had a great evening and hope to support this wonderful charity for the next 25 years.

Thank you and well done to all those involved in the organisation of the event.



We are so proud of Tim Lewis, our GRCL BIM Engineer who completed the St Albans Half Marathon on the 11th June, in extreme heat, raising funds for charity partner **Herts Young Homeless**. To date £580 raised and counting - what a fantastic achievement!

*** Well Done Tim ***

SHARED LEARNING



Understanding the Principles of Environmental Management – *Managing Spoil On Site*

Principles of Environmental Management is defined as the guideline procedures for every company and organization. The government have to follow with the primary aim of protecting the environment.

This article demonstrates a situation where a breach of this principle occurred, which required that the works be stopped and detailed investigations carried out to identify the cause and to remedy the situation.

On the given day, the clients manager observed that an excavation spoil had been spread locally onto adjacent

unadopted land by a team on site, in order to create a new access for the onsite excavator to use.

What was the breach?

In this situation, the activity was considered an environmental incident for the following reasons:

- ♦ It breaches the prevention principle, which aims to prevent environmental damage, such as to protected species or to natural habitats, water and soil, rather than to react to it.
- ♦ No soil sampling had been undertaken to determine whether the spoil was contaminated or not.
- ♦ The Preliminary Ecological Appraisal (PEA) identified the area as having a high potential for known species which could be impacted by the event.
- ♦ No further ecological assessments had been undertaken as works were not originally anticipated to encroach on the area as this was a last-minute change.
- ♦ In the absence of a permit, the spoil was classed as waste and should have been removed from site and disposed of appropriately.

What action was taken?

The above incident resulted in an investigation and the following measures were put in place:

- ♦ A member of the client's Ecology team visited the site to assess the impact from an ecological perspective and provided remediation recommendations.
- ♦ A waste classification test was undertaken to determine whether the spoil was contaminated and if so, organise disposal options.
- ♦ A site specific spoil management briefing was held by the team to discuss lessons learned from the incident and outlined the correct spoil management process. The company's spoil management process was also updated and shared across all projects.
- ♦ The findings were also considered in the review of the Work Package Plans (WPP) and the Task Briefing Sheet (TBS) in order to reflect the Environment and Social Management plan and specify appropriate management controls to be implemented on site.

How do we prevent similar incidents from happening?

Prior to commencing the works a number of factors that should be considered include:

- ♦ The awareness and understanding of the contract requirements for the management of all environmental constraints identified within the project including spoiled waste management.
- ♦ Understanding the contract requirements related to the project including any agreed assumptions between the contractor and the client.
- ♦ Awareness and understanding of the project environment and social management plan detailing any environmental risks and constraints specific to the work site, and the controls required to manage them.
- ♦ The content of the WPP and TBS which must contain the relevant information to enable the project to deliver successfully. Communicate the requirement to the onsite teams and ensure clear understanding prior to works commencing.
- ♦ Ensure there are arrangements in place to effectively manage environmental risks. This may include the constituents of the spoil to be dug, relevant environmental permits for storage and/or movement to a disposal site.

DIABETES WEEK 2023

DIABETES WEEK

12–18 June 2023

Morning blood sugar, pre-meal blood sugar, counting carbs. HbA1c, blood pressure, how many carbs were in that sandwich again? Diabetes can feel like a never-ending stream of numbers. And some days, they just don't add up.

Diabetes doesn't stop, but neither do you. You juggle the ups and downs, you face diabetes head on every morning (whatever your blood sugar!) and you don't let it hold you back.

So, this Diabetes Week, we want to celebrate everything that makes you, **you**. Because you're so much more than your numbers.

About 90% of people with diabetes have type 2 diabetes. The signs may not be obvious, or there may be no signs at all. Some people can live with it for might be up to 10 years before being diagnosed. That's why it's very important to know the diabetes risk factors.

↑40

Your risk increases with age. You're more at risk if you're white and over 40 or over 25 if you're African-Caribbean, Black African, Chinese or South Asian.

You're two to six times more likely to get type 2 diabetes if you have a parent, brother, sister or child with diabetes.

x2 x6

TYPE 2

Type 2 diabetes is two to four times more likely in people of South Asian descent and African-Caribbean or Black African descent.

You're more at risk if you've ever had high blood pressure.



You're more at risk of type 2 diabetes if you're living with obesity or overweight.

Type 2 diabetes is slightly more common in men than in women.



PROMOTION

Donal Kelly promoted to Senior MEP Manager for Global Rail Services



Global Rail Services is delighted to announce the promotion of Donal Kelly to Senior MEP Manager. The promotion is validation of the expertise and dedication Donal has provided over the last 10 years – support that has been instrumental in the success across the rail, mechanical and electrical operations in Ireland.

His role going forward will involve project tendering, project team organisation and project managing key contracts throughout Ireland, supporting staff, and acting as senior liaison for clients.

Donal will be supporting MEP Director Aidan Kelly, to deliver sustainable MEP management solutions in line with both client and business requirements.

Aidan Kelly, MEP Director for Global Rail Services Limited said:

“Donal is a high calibre Senior Project Manager. We are delighted to promote him and look forward to his support of Global Rail Services’ future growth and prosperity.”

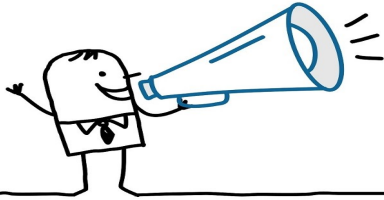
Kasia Kaczorowska promoted to Accounts and HR Administrator for Global Rail Services

We are thrilled to announce that Kasia Kaczorowska, who has been an integral part of our team as the **Global Rail Services** Receptionist and Office Administrator, has been promoted to the role of Accounts and HR Administrator. With her dedication and exceptional performance over the past two years, this promotion is truly well-deserved.

Thank you Kasia for all your hard work and loyalty.



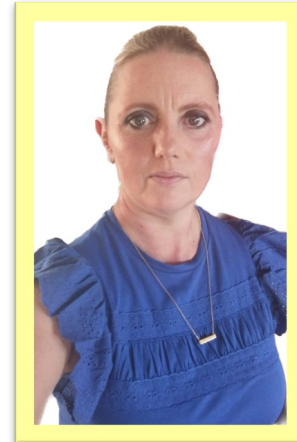
WELL DONE!



Welcome To The Global Family...



Danielle Stewart
Office Administration & Reception



Aisling Jackson
Payroll & Accounts Administrator



Jono Bayford
Purchasing & Procurement Officer



Tommy Moltar
Telco Technician



Marcus Klepka
Graduate Quantity Surveyor

The Global Infrastructure Group of companies, which have been established since 2001, incorporates – **Global Rail Construction Ltd, Global Rail Services Ltd, Global Rail Australia Pty Ltd and GRA Networks** a subsidiary operating in both Ireland and Australia.

“Our USP is without doubt our people and our long-term strategy will ensure we continue to invest in and develop our people to enable us to deliver our customers expectations, in an efficient and consistent manner”.



Global
Infrastructure
Group

A Leading Provider Of Turnkey Solutions
For The Rail Industry



Railway
Construction



Civil
Engineering



Telecomms



Multi-Utilities



Power
Networks



General
Construction



Design and
Consultancy

Combining technical and innovative excellence with a
real passion for detail and safe delivery of projects

www.theglobalinfrastructuregroup.com