



Global  
Infrastructure  
Group

Issue 37 2023

# GLOBAL NEWS



In This Edition.....

- \* **Project News**
- \* **New Starters**
- \* **Celebrations**
- \* **A New Chapter...**



[globalnews@grcl.co.uk](mailto:globalnews@grcl.co.uk)

# Foreword

**Welcome** all to our next edition of Global News and our final edition for this calendar year. I hope that you enjoy reading this fantastic medium that keeps us in touch and up to date on events, successes, and challenges both from a working and personal perspective across our Global Family.



Unlike previous years, it is fair to say this year has been a really momentous one! We have seen continued growth within our businesses together with our participation in some really key and critical projects. The commitment demonstrated by our clients and supply chain partners in working with ourselves, is purely down to the confidence and absolute trust they have in working with our businesses and the fantastic people within those businesses. This year has seen the acquisition of both our UK and Irish businesses to the RSK Group. This culminated in RSK, very much like our clients, putting their trust and confidence in our ability, people, experience and fantastic track record to acquire our businesses and add them to their list of growing 'best in class' acquisitions.

RSK was established in 1989 and over 30 years later have added 300 businesses, and growing, to their group with over 14,000 employees and a turnover in excess of £1.4bn, working across diverse areas such as Environment and Social, Ground Investigation, Sustainable and Eco-friendly Solution, Climate Change, Design and Engineering, HSE and Digital, Media and Marketing, to list a few. Guided by their nine principles, which are closely aligned to our own core values, and with a commitment to health and safety, RSK provides end-to-end, bespoke solutions to a vast array of industries across the globe focusing on environmental science, research, engineering and technical services. This acquisition helps us further strengthen our service offering whilst continuing to grow our overall multi-disciplinary delivery to the industries, with which we work.

With the support and strength in that depth our new parent company offers ourselves, this will enable both our UK and Ireland companies to grow further into their respective industries, whilst offering ourselves the opportunity of diversification into other industries, which we may not have previously considered. We have engaged fully with key areas of the RSK business and as I write, I am pleased to confirm that we are seeing some strong synergies and opportunities come out of those discussions, which will help broaden and extend our order book, for many years to come.

We have been fortunate to share in many positives and successes throughout the year, and although I and the senior leadership team are delighted with our continued performance, it really is a reflection of our fantastic people, technology, partners and 'can do' attitude that ensures we continue to deliver safely and consistently. Our focus and direction have always been to ensure we are 'best in class' and to insist through everything we do, we always keep our people safe – that is our priority. We will always ensure that the health, wealth and safety of our people, our clients, supply chain partners and public, are of paramount importance and a priority, which precedes everything we do. However, there is another critical factor that contributes significantly to our excellent performance record, **ALL OF YOU**.

The support from our Leadership and Project delivery teams, together with all our people, is really making a difference – **Please** let's keep doing what we are doing, be open, honest and happy to challenge the status quo to ensure we all go home to our loved ones each day.

Finally, I would also like for us all to take a moment to reflect on those who are no longer with ourselves, particularly our dear friend and colleague, Adam Footer, may he rest in eternal peace. For all our people that are no longer with us and their families, but live on in our hearts and will always be remembered as part of the Global Family.

Ivan and I, including our wider leadership teams at the Global Infrastructure Group, would like to take this opportunity to personally thank you all and to wish you and your families, our clients and our supply chain partner's a very happy Christmas and healthy and happy new year!

Take care of yourselves and each other and I look forward to catching up with you all in 2024.

Kind regards,

**Marco Lombardelli**  
Managing Director

**#Thankyou**

**#Keepsafe**

**#Staywell**

**#Stayhealthy**

**#Familytime**





# Save the Children

There's more to Christmas Jumper Day than wearing a silly jumper.  
You'll be helping children facing serious issues like war, hunger and poverty.  
And this year, with so many children having a really tough time,  
getting involved matters more than ever.

The GRCL team supported **Save the Children**  
and donned their Christmas Jumpers on the 07th December.



## Passionate

Committed in heart and mind to whole-heartedly embrace our core values and culture, without exception.



## People

Growing our organisation from within, promoting and empowering our people, inspiring them to be the best they can be.



## Professional

At all times we act with integrity, providing quality service, reliably and responsibly.



## Teamwork

Working collaboratively whilst supporting and respecting each other's views.



## Responsible

To consistently deliver quality, on time, safely and to budget whilst protecting our communities and the environment.





Following 18 months of efficient planning and effective delivery, Global Rail Construction Limited (GRCL) has supported client and Principal Contractor AtkinsRéalis, with the successful commissioning of Feltham to Wokingham Phases 3&4.

The sheer scale of this achievement can be seen in the blockade numbers:

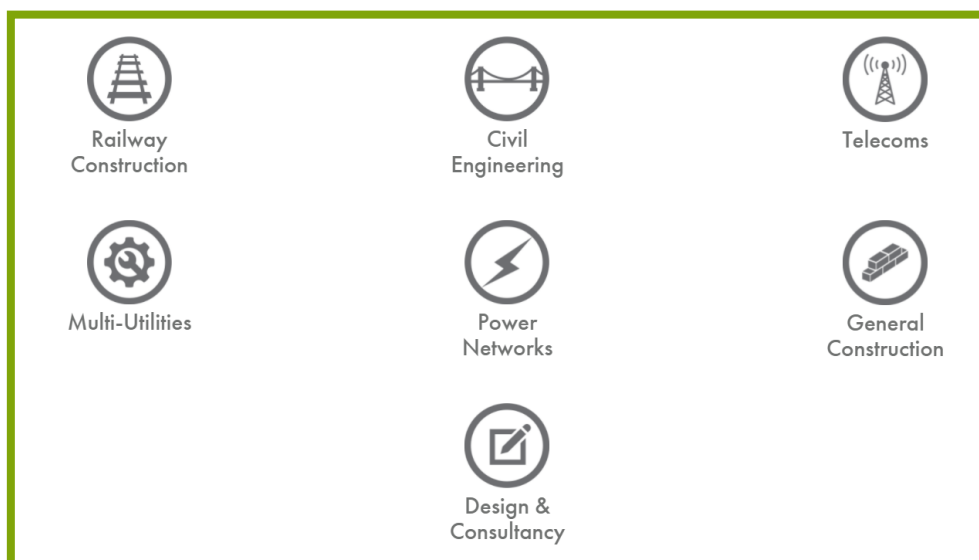
GRCL deployed 64No RRV's, 32No MEWP's and 24No Scrap Train Shifts.

In total 1,356 staff supported the blockade across 17 miles of track, downloads from step counters were in the region of 12-14 kilometres per day - an incredible effort!!

GRCL's significant rail systems sub-contract, encompassed Civil and Structural Engineering including temporary works, E&P, Telecoms and Signalling installation works on Network Rail's Wessex Route - part of their Southern Region. All existing lineside signalling infrastructure has been replaced with new equipment including all cabling, Location Case suites, Signal Structures. AWS and TPWS, and existing AC track circuit train detection replaced by the Frauscher Advanced Counter (FAdC) Axle Counter system. A total of 7No controlled Level Crossings have been renewed to interface with the new ElectroLogIXS lineside equipment with the decommissioning and replacement of the booms, barrier machines, road traffic lights (RTLs), and changing from incandescent bulbs to white light LEDs. This included all road re-surfacing works including yellow and white lining. Our pre-commissioning works enabled our teams to cover multiple sites over the two-week blockade closure of some the busiest lines in the region, including the full telecoms Installation works resulting in a total of 88 SPT's and 12 Substation phones entered in service.

**Our GRCL team has consistently demonstrated a collaborative approach throughout this sizeable multi-disciplinary project.**

**Led by Project Manager Barry Smith, the entire workforce including our supply chain partners, deserve huge praise for this impressive achievement, resulting in the timely culmination and successful commissioning of these newly signalled phases of the project.**

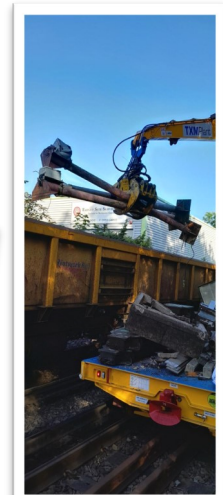
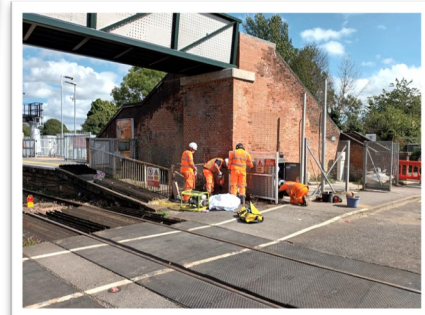
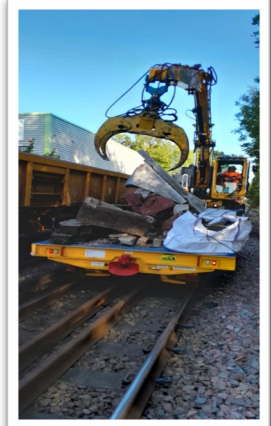






Global  
Rail  
Construction

AtkinsRéalis



Global Rail Construction

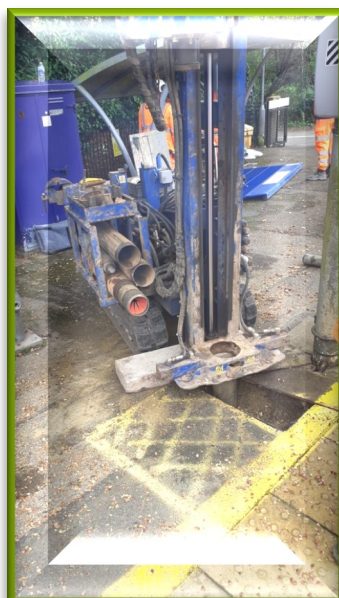




Our **Global Rail Construction Limited (GRCL)** team successfully completed weekend 27 works on the North Downs Lines (NDL) Level Crossing project on the Brighton Mainline for client AtkinsRéalis with no incidents or accidents.

GRCL's works consisted of the following:

- 3No topographical surveys for signals
- 4No trial holes for signals
- Handrail installation at Burrows level crossing
- Rotary drilling in preparation for the design of new 'king post' retaining walls
- Supplying ECO pods and welfare van and drivers for the possession
- Further ground investigation for design of slope stability for the retaining walls
- Installation/removal of road closures barriers at Burrows and Brook crossings





**Sawston SMIO base and retainer, another great installation by GRCL.  
More excellent work here from our team, to continue saying, keep up the good work  
seems almost pointless as this high level of installation is very much the norm!**







## Maintenance of Airnav Irelands Communications Network

**GRA Networks** have undertaken a project for OCS to survey and maintain all Airnav Ireland's communications infrastructure throughout the Country. This project consists of maintenance inspections to assess the condition of key components of each structure, certify the fall arrest systems, the EMF emissions, and the resistivity of each structures earthing. As part of this project we undertake remedial works identified during the maintenance inspections.

### Typical Structures - SMR 3 Radar Site & Remote Radar – Dublin Airport



We also maintain airside Nav Aids such as glidepath receivers and transmitters. Typically these structures are located at intervals along the glidepath of each runway.

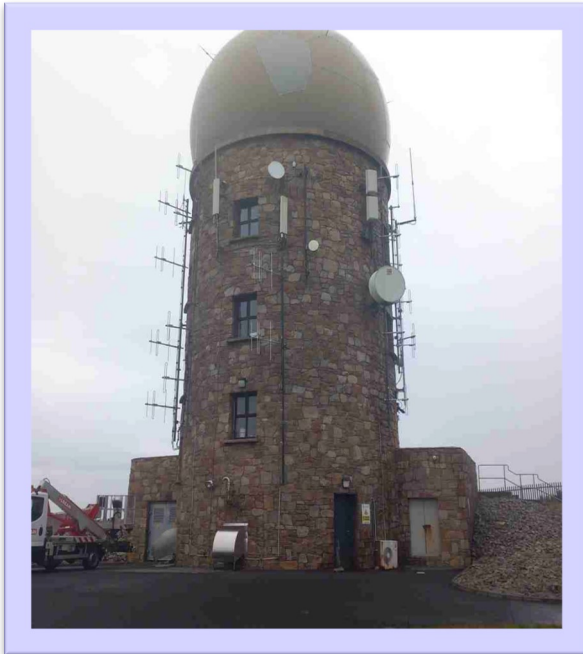
### GP 28R located in Dublin Airport & OP Array at Portmarnock County Dublin





We also maintain several remote radar stations such as Dooncarton and Malin Head. These structures are located on the west and northwest coast of Ireland and house radars that service the cross Atlantic air traffic.

### Remote Radar Stations



Our engineers test and certify the critical component of each structure.

### Installation Certification

<b>Torque Certificate</b>	
Site:	SMR 3
Structure Type:	3 Sided Lattice
Supplier:	Air Nag
Date of Inspection:	09/06/2023
Pass/Fail:	Pass
<p>This is to confirm that all new bolts fitted have been torqued as per manufacturers' specifications and guidelines and 15% of the bolts on the above named structure have been torqued and checked as per specification</p>	
<p>Comments:</p> <div style="border: 1px solid black; height: 40px; width: 100%;"></div>	
<p>Signed on behalf of GRA Networks</p>	
Signature: <u>Karl McEvoy</u>	Position: <u>PICW</u>
<p>Print Name: <u>Karl McEvoy</u></p>	

<b>RF Emission Test</b>	
Site:	SMR 3
Structure Type:	3 Sided Lattice
Engineer:	Karl McEvoy
Date of Inspection:	09/06/2023
<b>Test No.1</b>	
Average Levels:	4.268vm
Location:	Gate entrance
<b>Test No.2</b>	
Average Levels:	2.282vm
Location:	base of tower
<p>Signed on behalf of GRA Networks</p>	
Signature: <u>Karl McEvoy</u>	Position: <u>PICW</u>
<p>Print Name: <u>Karl McEvoy</u></p>	





Energy for  
generations

**Global Rail Services** have recently completed a contract to upgrade ESB (Electricity Supply Board) supplies to seven stations across the Irish rail network. Stations include Arklow and Wicklow in Co. Wicklow. Banteer, Glounthane, Little Island, and Rushbrooke in Co.Cork and Rathmore in Co Kerry. All sites required both civil and electrical works whilst liaising with our Clients, Irish rail and ESB networks.







On behalf of Irish Rail, **Global Rail Services** upgraded the welfare and heating facilities for seven stations—all are underway and on target.

Pictures show the electrical and mechanical installation at Mullingar station, Co. Westmeath.



The reinstatement of cobble block at Bray station, Co Wicklow, after the installation of services



### Global Rail Services

Unit 516a Grants Rise  
Greenogue Business Park  
Rathcoole, Co Dublin  
D24 FH56  
Ireland

+353 (0) 1 458 8540

**Global Rail Services** has proven experience in delivering some of the most exciting projects across a diverse range of service sectors.

Our in-house capabilities, our scale and our supply chain partnerships have allowed Global Rail Services to deliver complex multi-disciplinary projects that make a positive difference to our clients, across the Irish infrastructure industry that we serve.





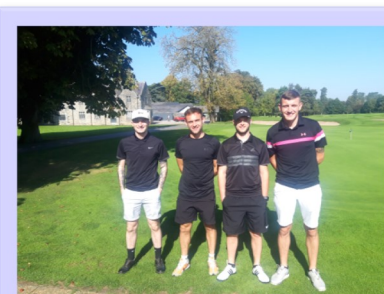
On the 08th September some of our Global Rail Services Family had a lovely day out at Kilkea Golf Course.

This Golf Course has been developed in a magnificent setting, beneath the shadows of a 12<sup>th</sup> century Castle (the oldest continuously inhabited castle in Ireland). It allows the splendour of the Castle to be viewed from every fairway.

A very well done to all our participants and congratulations to the following:

<b>Winner</b>	- Paul Kelly
<b>Wooden Spoon Winner</b>	- Stephen O'Brien
<b>Nearest To Pin Prize</b>	- Brian Barron
<b>Longest Drive Prize</b>	- Declan Galliger

**\* Thank You All & Hope You Had A Fun Day \***







# VicTrack

**Global Rail Australia Pty Limited** has completed a fully managed \$500,000 refurbishment of three buildings in Neerim Road, Murrumbena, Victoria for key client VicTrack.

Each building was previously a single storey shop and following a section of internal wall being removed between two of the buildings, Global Rail Australia has successfully created a large single commercial unit. The works were completed on a fast track basis with a contract program of works of just four months. The existing heritage buildings consist of solid masonry external and internal walls, sheet metal mono-slope roofs, and a combination of timber and concrete floors.

The shop fronts being almost entirely glazed up to the underside of the front canopy which cantilevers across the entire footpath and extends across the three shops plus a walkway and two adjacent shops. The canopy has a sheet metal mono-slope roof and a pressed metal ceiling cladding. There are solid masonry parapets above all walls except the rear wall.



Poorti Sachdeva, Finance Manager, has been with Global Rail Australia for four years and this was her first time attending site. She visited the Brooklyn site in Melbourne's West, where they are building an electrical substation. She was on site discussing user requirements as we are rolling out HSQE forms in digital format.



**Poorti Sachdeva – GRA Finance Manager getting ready to head out to site**



## Global Rail Australia

5 Plane Tree Avenue  
Dingley Village  
Vic 3172  
Australia  
**+61 (0) 3 9551 0465**

## Global Rail Australia

has proven experience in delivery of the most exacting projects across a diverse range of service sectors.

Our in-house capabilities, our scale and our supply chain partnerships have allowed Global Rail Australia to deliver complex multi-disciplinary projects that make a positive difference to our clients across the Australian infrastructure industry that we serve.





All civil, structural, and building works for Brooklyn Substation (BKN) were awarded to **Global Rail Australia** by our client Zinfra. We commenced on site in May and are continually progressing on time as per planned program.

Brief scope of works includes:

- ◆ Construction of underground trench routes with electrical conduits for all transformers and other structures.
- ◆ Construction of underground stormwater drainage.
- ◆ Supply and Installation of humeceptor.
- ◆ Construction of concrete foundations.
- ◆ Construction of concrete footings for lighting masts.
- ◆ Construction of transformer enclosures.
- ◆ Supply and installation of precast wall panels.
- ◆ Construction of substation access road.
- ◆ Construction of concrete kerbs.

The main objective for September was to get the switch yard footings poured, the first stage of the footings was poured on the 14th September, the second stage of the pour was poured on the 28th September. Conduits have been installed and backfilling and earthing are now taking place in the switch yard.

The temporary transformer was excavated, blinded, sump poured, and the final pour was completed on the 24th September. The amenities building was piled and poured on the 14th also. The last 20% of the CSR trench was completed on the 14th September, the trench is now complete.

The remainder of the feeder conduits were connected into customer pits 1 & 2. The conduits were then backfilled with TFB and warning tape was placed on top of them before the ground level was brought up close to FSL. 4m of conduit was also brought from pits 3 & 4 in past the site boundary so future connections could be completed without removing the boundary fence.

Grand seal has removed the tilt panel props and complete the patching and remaining caulking, the transformer enclosures are now ready to house the transformers.

GRA's internal crew began to excavate the access road in preparation for the transformer deliveries.

Drainage pits and plumbing were installed around the transformers to tie in with the access road construction, VP1 was installed and the drainage from the CSR trench was connected.

The switch room piles and pile caps are now 100% completed, the switch room area has been covered with crushed rock and brought up close to FSL.

### **Milestone summary for September 2023**

- ◆ All switch room piles and caps inspected and poured
- ◆ 100% of CSR trench poured
- ◆ TR1 and TR2 footings 100% complete
- ◆ Ductile iron pipes connected to TR1 and TR2 pits
- ◆ Temp transformer and amenities building were completed
- ◆ 200mm feeder conduits connected to the customer pits

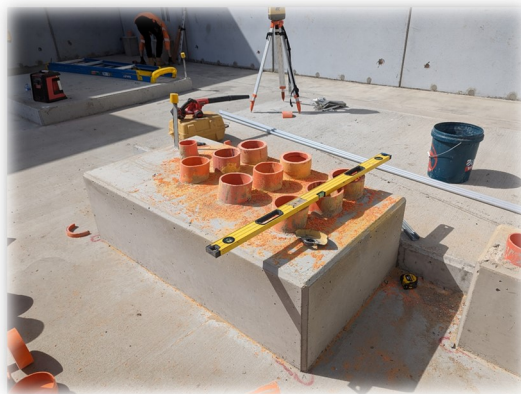
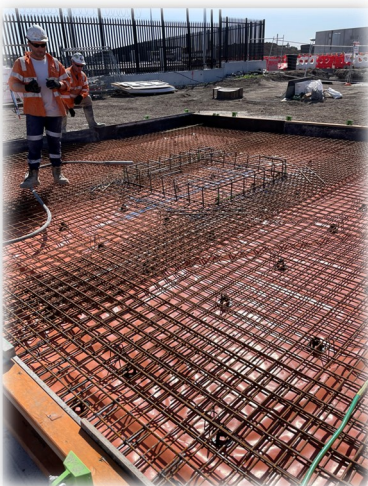


- ◆ All conduits installed and backfilled to Switch yard
- ◆ All Pre-Cast Panels tilt props removed and panels patched
- ◆ All Switch Yard Conduits installed
- ◆ All Switch Yard footings poured
- ◆ Valve Pits delivered to site, marked out and Installation has started
- ◆ Access Road preparation is now underway

### **Forthcoming Planned Works**

- ◆ Continue excavation on access road
- ◆ Install humeceptor
- ◆ Continue installing drainage pits and pipe along the perimeter of the site
- ◆ Continue installing ductile iron pipe across the road from transformers to valve pits
- ◆ Install NER conduits and power conduits to temp trans bund
- ◆ Install water and waste pipes to new toilet block
- ◆ Backfill the remainder of the switchyard

Global Rail Australia is delivering this project by investing their time and expertise and progressing on time with no safety concerns to date.







## Culvert Lining at Maroona and New LV connections for Wayside Monitoring equipment

**Global Rail Australia (GRA)** civils team have recently completed two projects for **Australian Rail Track Corporation (ARTC)**.

As part of mud removal from steel culverts, and providing the bottom half of the pipeculverts with concrete using shotcrete method, **GRA** was awarded to complete concrete lining works for cells 1,6,7,8,10,11 and 12 in a culvert at KP242.537 on Hopkins River in Maroona, Victoria. Each cell is approximately 4m in diameter, 15m in length and 2.5m high.

This project was challenging due to difficult site access, and wet weather conditions. All site works have been completed in a live operational environment under supervision of a Track Force Protection Coordinator (TFPC).

**Global Rail Australia** have delivered this project on time with no safety concerns by investing their time and expertise.







# ARTC

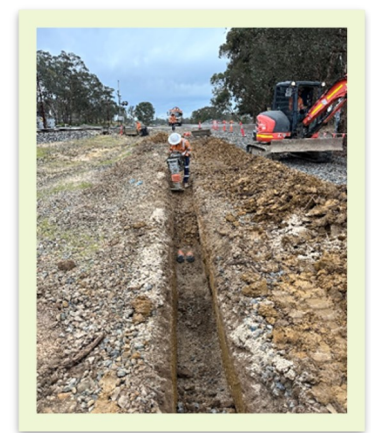


**GRA** was engaged by **ARTC** to complete civil works which enabled the provision of a permanent low voltage power supply from a nearby source to an existing **ARTC** wayside monitoring hut that is currently solar powered.

We also constructed a cabling route for future monitoring equipment that the demands of increased train services the Inland Rail Project will be accommodating.

This project included construction of 250m long underground cable route with a combination of 2 and 3 100mm diameter conduits and installation of new pits.

As all the works were within the live rail corridor, **GRA** completed the works safely under the supervision of an experienced Track Force Protection Coordinator.





**V/Line** has planned a 10-day track occupation on Sunshine to Ballarat and Ballarat to Ararat Lines to undertake the construction of reinforced concrete box culverts at multiple locations on these lines. As part of this, **Global Rail Australia** was awarded with a reinforced box culvert replacement project at KP160.746 on Ballarat to Ararat Line.

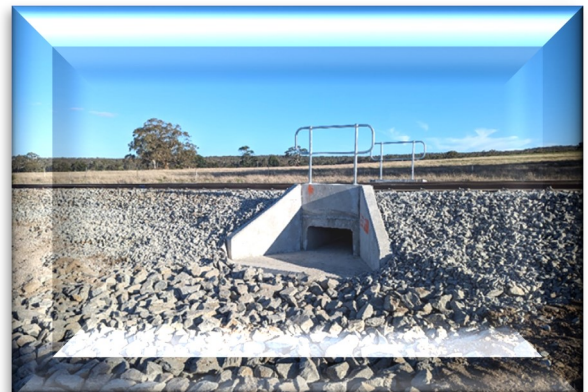
## PROJECT SCOPE

- ◆ Receipt, unloading and inspection of all materials on site.
- ◆ Keep and provide records of materials used and installed.
- ◆ Provision of site management, worksite protection and security, as well as traffic and pedestrian management plans to facilitate hi-rail access or other purpose as necessary.
- ◆ Provision and construction of safe site access for all plant, machinery, and personnel.
- ◆ Provision and maintenance of all environmental controls inclusive of vegetation removal if required.
- ◆ Supply and construction of all formworks (if any) required to produce the precast concrete components and in-situ concrete components as per the design drawings.
- ◆ Provision of unloading of concrete box culvert and wingwall on site delivered by V/Line.
- ◆ Removal and storage of rails and sleepers at safe place.
- ◆ Removal and disposal of existing ballast and life expired sleepers from existing culvert ballast may be reuse at location nominated by V/Line, (any stock piling of fouled ballast to be placed on robust waterproof membrane).
- ◆ Removal and disposal of existing culvert.
- ◆ Any excavations and earthwork must be completed in according to design drawings and V/line Standards.
- ◆ Installation of concrete box culvert and wingwalls with headwalls as per the design drawings.
- ◆ Supply, fabrication, and construction of cut off wall as per the design drawings.
- ◆ Reinstatement of formation of culvert approaches, embankments, and any damages as applicable as per NIST 2659 and the design drawings.
- ◆ Supply and install rock beaching as specified in the design drawings.
- ◆ Supply, fabrication, and installation of handrail as per V/Line standards and drawings.
- ◆ Cleaning of the site and reinstatement of any pathways/access roads or infrastructure disturbed by the works.
- ◆ Disposal of all redundant material in an approved landfill. Where possible, V/Line prefers redundant materials to be recycled.
- ◆ All road rail (Hi-rail) plants if used must be approved by V/Line and register in plant guard prior to being used on the network as per V/Line requirement and Hammertech.
- ◆ Supply and installation of new culvert kilometre marker plaque to new concrete box culvert.
- ◆ Cleaning of the site and reinstatement of any pathways/access roads or infrastructure disturbed by the works.





Global  
Rail  
Australia



Global Rail Australia



## Melbourne PTV Repeater Upgrade – Build Services Update – C537

**GRA Networks Australia** is delighted to have been selected as Telecoms build partner for the award of a contract for Site Make Ready (SMR) work, to swap out old “end of life” Siemens Base Transceiver Station (BTS) hardware and install new Nokia Flexiedge BTS hardware within a new Eltek BTS.

There are 22 no. sites in the program, which are planned for completion imminently.

Cutovers are limited to either small daytime outages (30 minutes), a 2-hour window of After The Last, Before The First (ALBF) train, or under occupation of the line.

Works included:

- Site make ready works (Installation of New Repeaters and Head end equipment)
- Installation and commissioning
- Integration and activation
- Decommissioning of legacy equipment
- Site acceptance

An example of two sites which show the challenges faced in this project are:

### **Nokia – Craigieburn Train Maintenance Facility Site**

This site is a Greenfields build which is particularly challenging due to its sensitive location of a Train Maintenance Facility, with adjacent rail yard.

### **Nokia – Flinders Street Site and associated Repeaters**

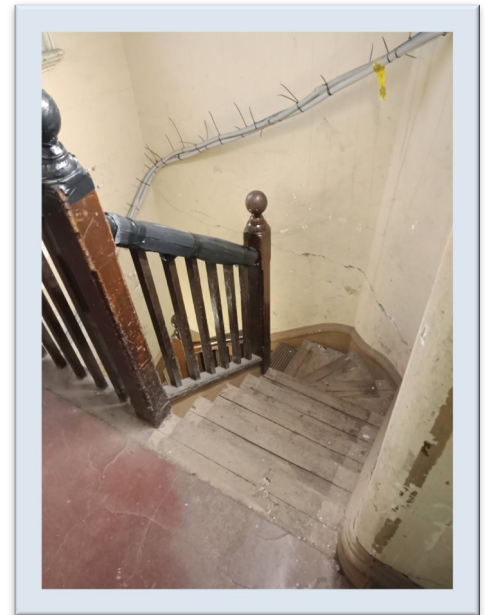
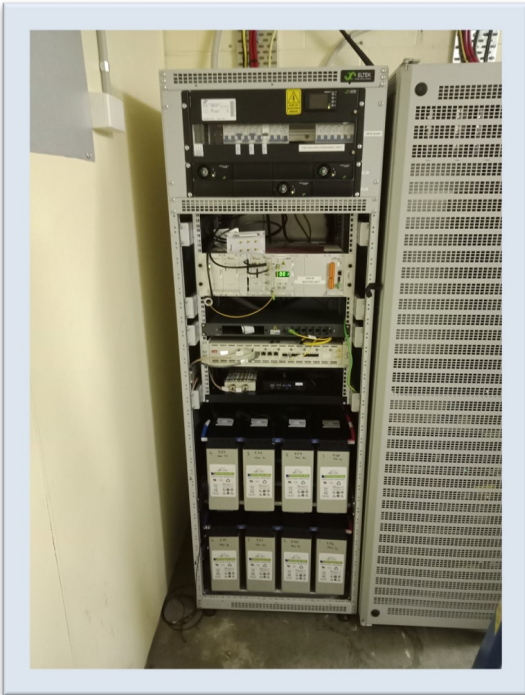
Works additionally involve an ALBF involving coordination with VicTrack, MTM, Nokia and GRA. ALBF and all associated safe working requirements.

Delivery of equipment via a stairwell and the public concourse.

Site cutover of three sites in the same ALBF period.







Our vision is that everyone arrives for work healthy and leaves for home safely, everyday.



Global  
Rail  
Australia

ERICSSON 

**Global Rail Australia (GRA)** has been contracted on behalf of Ericsson, to upgrade the existing 3G/4G network and install the new 5G technology for both Optus and Vodafone (eJV). The suburb where we are upgrading a site is in Clayton, this is the rooftop site, on site existing roof steelwork at 15m high passive antennas decoupled for VHA, and on the existing mounting pole Optus, Vodafone antenna mounts are present. GRA are supplying all aspects of upgradation works from Riggers, Technicians, and Electricians.

Liaising with the Director of the Clayton Hotel, Indara Digital Infrastructure, and Nikotsaras Club to plan and coordinate this upgradation work, which is a very important part to deliver this.

**Optus Vision Upgrade works included:**

- ♦ Delivering material
- ♦ Working at heights
- ♦ Removing and installation of new steelwork
- ♦ Compound extension work

Approval from the Director of the Clayton Hotel, Indara Digital Infrastructure, and Nikotsaras Club to deliver all equipment/materials, and electrical upgrades, which are some of the important scopes of work to complete.

This was very demanding and a necessity to run as smoothly as possible, as per the Director of the Clayton Hotel, Indara Digital Infrastructure, and Nikotsaras Club and site access process requirement. Also, it's a very challenging site as this site is in a busy residential area with small businesses and Clayton Railway station nearby.

**The works involved:**

- ♦ Delivering all steelwork, materials, and equipment, required planning during weekdays to complete the delivery, by coordinating the Director of the Clayton Hotel, Indara Digital Infrastructure, and Nikotsaras Club as it need processing lead time before accessing the site.
- ♦ An electrical upgrade is required to replace the existing 32A Optus DC PSU CB with a new 40A single-phase circuit breaker.
- ♦ Network outages, fully decommissioning existing technologies, and equipment internally and externally. Upgrading all equipment internally and externally, with new steelwork, antennas, Ericsson and Huawei RRUs (Remote Radio Units), and ALL DC equipment. Commissioning and integrating the new technology into the Network, via support from the Optus change management and technical change management (TPG).
- ♦ Installation of new Rafter Strengthening works on the existing mounting pole.
- ♦ Providing all OHS/HSE standards, and submission of post-completion documentation on the Client submission portal (site handler).



**THANK YOU TEAMS**

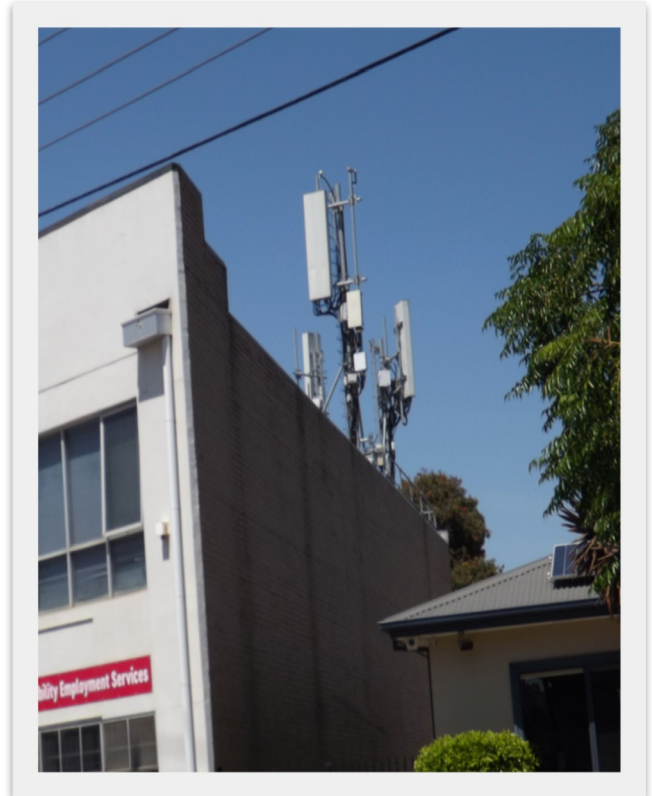


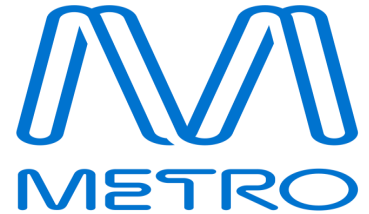
**Scope as follows: -**

- ◆ Remove existing antennas and steelwork from the existing mounting pole.
- ◆ Install new steelwork and new lad-saf on the existing mounting pole.
- ◆ Install new Optus Air3239, and decoupled passive antenna for VHA, and new Ericsson and Huawei RRUs to the newly installed steelwork.
- ◆ Install new Optus and VHA ancillary equipment and Hybrid Trunk cables.
- ◆ Swapping existing eJV 4G panel antennas with new 4G panel antenna (RRV4-65D-R6-EC and AIR3239) on new antenna mounts.
- ◆ Replace the existing 32A Optus DC PSU CB with a new 40A single-phase circuit breaker.
- ◆ Repair rooftop water leak

These works were performed under an SLO (Single Long Outage), meaning the duration of the time both Vodafone and Optus were off air, whilst upgrading the site.

All works were delivered by GRA at a high level of professionalism and safety with no reported safety concerns.

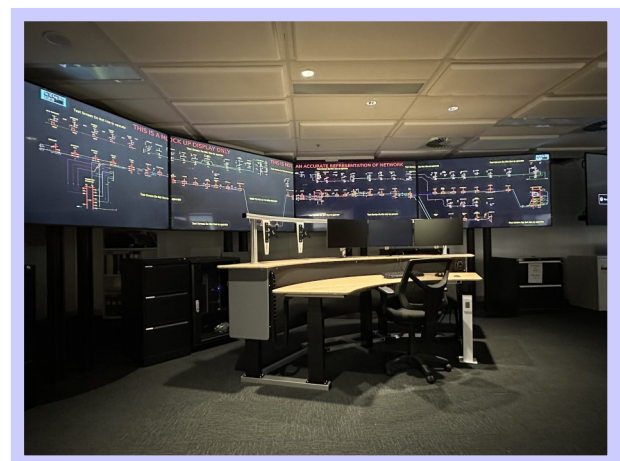
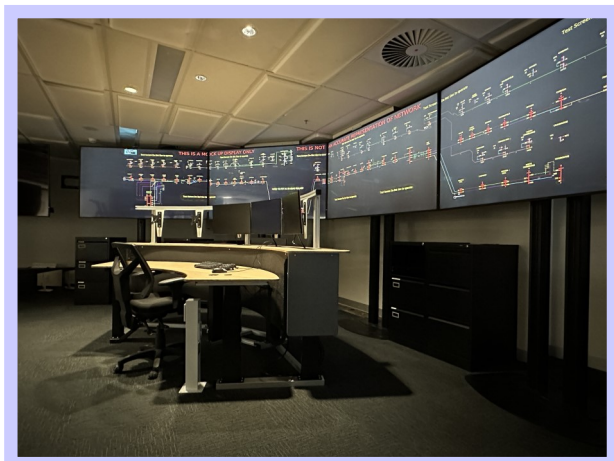




In preparation for the new Metro Tunnel, Metro Trains Melbourne Infrastructure awarded **Global Rail Australia** the MTM Electrol Control & Integrated Fault Centre upgrade works. MTM Electrol is responsible for operational control and monitoring of Electrification SCADA Systems, this includes overhead power, signalling power and other auxiliary tasks.

Global Rail Australia's scope included:

- ◆ Office reconfiguration including the construction of new walls, windows & doors.
- ◆ Power cabling & outlets to both ESS DB's and UPS DB's
- ◆ Structured cabling and outlets to existing Communication & SCADA racks
- ◆ Fire Services alterations (both wet & dry)
- ◆ HVAC alterations & commissioning
- ◆ Lighting system upgrades (Philips Dynalight) including integration works
- ◆ Supply & Installation of Operations desks
- ◆ Set-Out and Installation of Console ODPs
- ◆ Testing & Commissioning







Herts Young Homeless

# Supporting Vulnerable People in Hertfordshire

Our UK Global Rail Construction Limited (GRCL) team is partnering with local charity Herts Young Homeless, supporting them to make a difference to the lives of young people in Hertfordshire who are facing homelessness - by providing the vital services to support them. Nine of our GRCL team took part in the 'St Albans Sleepout' on Friday 10th November, facing the cold with temperatures dropping to 3 degrees during the night! As part of a group of 124 brave souls, collectively, an incredible £43,600 has been raised, with the total still increasing - this is an incredible amount of money!

**\* Thank You So Much \***

The St Albans Sleepout is Herts Young Homeless's biggest fundraiser of the year, with this year's event being even more special as the Sleepout celebrated its 30th anniversary.



In support of our chosen charity partner Herts Young Homeless (HyH), some of the GRCL family attended their quiz night in St Albans. We are proud to say we came 5th out of the 15 teams that attended! A good evening was had by all and monies raised for such a worthy charity. Hyh confirmed the evening raised an impressive £2,044 for Herts Young Homeless!



**The Big Herts Quiz raised**  
**£2,044**  
**Thank you to everyone who**  
**took part!**



Lee Cresswell (L) receiving his award from Henry Bonuah.



Senalom Fenton Prime (L) receiving his award from Barry Smith.



Gary McMullen (L) receiving his award from Henry Bonuah.

Our **Global Rail Construction** HSQE Manager, Henry Bonuah, received a special message of commendations from the AtkinsRealis HSQE Director, Sharon Hillstead, and HSQE Manager, Daren Gardner following their visit to site during the commissioning weeks at our Feltham project. According to Sharon and Daren, three individuals **Gary McMullen**, **Lee Cresswell**, and **Senalom Fenton Prime** were outstanding in their contribution to the commissioning works.

Gary McMullen's works briefing, and supervision demonstrated his understanding of the works and calm leadership at the time where so much was going on, Lee Cresswell was very meticulous when he was undertaking the groundbreaking operations at the Wood Lane level crossing. Finally, Senalom Fenton Prime, was very focused on the works and was also willing to assist others during the duration of his time on site.

These recommendations have been received by GRCL management as a positive intervention and in line with the organisation's process, these individuals have been rewarded accordingly. Thank you, Sharon and Daren, and the wider AtkinRealis and GRCL Teams for your support during the commissioning weeks.







**Global Rail Services** has recently been recognised with the "Higher Achiever" award by the National Irish Safety Organisation (NISO).

Great work by Declan Dixon, GRSL Safety Officer, for this achievement

The NISO mission statement is to create the conditions where Irish workplaces are among the safest and healthiest in Europe through:

- The provision of leading information, advisory and training services.
- The promotion of a culture of excellence in workplace health & safety.
- Playing a leading role in advancing the national health & safety agenda.
- Helping members develop a culture of health and safety in their workplace.



Austin Smith (L), GRSL Construction Manager, recently had the honour of presenting a safety award to Marius Postolachi, GRSL General Operator, in recognition of outstanding performance in the current ESB safety audit.



**Global Rail Services** has proven experience in delivering some of the most exciting projects across a diverse range of service sectors. Our in-house capabilities, our scale and our supply chain partnerships have allowed Global Rail Services to deliver complex multi-disciplinary projects that make a positive difference to our clients, across the Irish infrastructure industry that we serve.

**CONGRATULATIONS**

**Bill Walker**  
**(GRCL Operative)**  
**10 Years Service**

**Global Rail Construction Ltd**

**(GRCL)** were delighted to celebrate the **10 Year Anniversary** of GRCL Operative, **Bill Walker**.

Bill has provided his services to GRCL over the course of the last 10 years and is able to assist with complex and challenging contracts whilst providing invaluable guidance and support to our team.



Adrian Crainac (GRCL Engineer (R))  
 presenting Bill Walker with his award

**CONGRATULATIONS**

**Adolfo Gordon Blasini**  
**(GRA Telecommunications Technician)**  
**10 Years Service**

**Global Rail Australia (GRA)**

were delighted to celebrate the **10 Year Anniversary** of GRA Telecommunications Technician, **Adolfo Gordon Blasini**.

Adolfo is a very valuable member of the GRA family who has provided us with very beneficial knowledge and support.



Left to Right – Ivan Holloway (CEO), Adolfo (Telecommunications Technician), Craig Gibson (Telecommunications Manager)

**We would like to take this opportunity to thank  
 Bill and Adolfo**

**for their continued professionalism and commitment whilst engaged with  
 ourselves and look forward to working together on future projects**

The Global Infrastructure Group are globally engaged in a whole spectrum of markets, offering solutions specific to our client needs.

The nature of our high-value services means we are involved in complex projects. These projects often require a combination of our activities and services in order to deliver the optimum result for our clients.

Recognising that each industry and sector of activity has its own processes, we offer solutions specific to our clients needs.



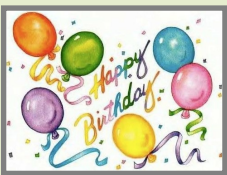
Our **Global Rail Construction Limited** (GRCL) team held a Macmillan coffee morning on the 3rd October 2023 at its Hatfield HQ.....and have raised £440.40! Thank you to our three 'Baristas' who did such a fantastic job too.

**Thank you to everyone** who contributed to this event, with special thanks to our GRCL site team at Cambridge that added £100.00 to the total.

**MACMILLAN  
CANCER SUPPORT**



## HAPPY BIRTHDAY



A very Happy **50th** Birthday to Chris Hick  
(GRCL Construction Manager)  
who celebrated his birthday in October.

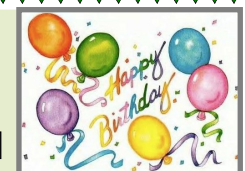


**We all hope you had a wonderful time celebrating this milestone birthday**

## HAPPY BIRTHDAY



A very Happy **40th** Birthday to Richard Horsted  
(GRCL Senior Design Manager)  
who celebrated his birthday in August.



**We all hope you had a wonderful time celebrating this milestone birthday**

# JUST FOR FUN



## Sports Word Search

**DIRECTIONS:** Circle the names of the different sports from the word list in the letter grid below. To find them all you will have to look in every direction, including backwards and diagonally. Good luck!



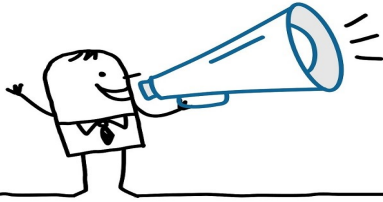
Archery  
Athletics  
Badminton  
Baseball  
Basketball  
Boxing  
Cricket  
Diving

Fencing  
Football  
Formula One  
Golf  
Gymnastics  
Handball  
Hockey  
Judo

Lacrosse  
Polo  
Rugby  
Sailing  
Skiing  
Soccer  
Softball  
Squash

Sumo  
Surfing  
Swimming  
Taekwondo  
Tennis  
Volleyball  
Weightlifting  
Wrestling





# Welcome To The Global Family...



Austin Smith  
Construction Manager / Site Agent

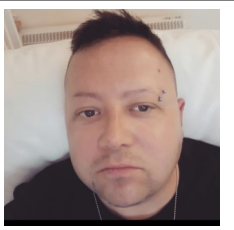


Trevor Stuart  
Senior Quantity Surveyor

***Our long-term strategy ensures we can continue to invest in and develop our people to enable us to deliver our customers expectations in an efficient and consistent manner***

## IN LOVING MEMORY OF OUR DEAR FRIEND AND COLLEAGUE ADAM FOOTER

**14th February 1978 - 21st November 2023**



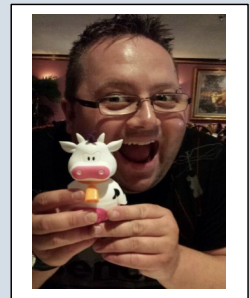
It is with great sadness and a very heavy heart that we must announce the passing of our good friend and colleague Adam Footer (GRCL Storeman).

Adam was a remarkable person, always helping everyone and made so many laugh with his stories. He was, and always will be, a huge part of the Global Rail Family.

Adam was with Global Rail Construction for seven years and he will be very sorely missed by everyone.

He will be forever in our hearts and never forgotten. Heaven is a lucky place to have gained such a great person.

**\* Rest In Peace Our Dear Friend \***





Global  
Infrastructure  
Group

A Leading Provider Of Turnkey Solutions  
For The Rail Industry



Railway  
Construction



Civil  
Engineering



Telecomms



Multi-Utilities



Power  
Networks



General  
Construction



Design and  
Consultancy

Combining technical and innovative excellence with a  
real passion for detail and safe delivery of projects

[www.theglobalinfrastructuregroup.com](http://www.theglobalinfrastructuregroup.com)