



Part of the RSK Group of companies

Issue 40 2024

GLOBAL NEWS



In This Edition.....

- * Project News
- * New Starters
- * Celebrations
- * A Day In The Life...


globalnews@grcl.co.uk

Foreword

Welcome to the 40th Edition of the Global News Magazine



We are excited to bring you the 40th edition of our Global News Magazine!

This newsletter offers us a wonderful opportunity not only to connect with our colleagues across the business but to also highlight and celebrate the incredible work we are doing here at Global Rail Construction and Global Rail Services. This year has already been incredibly busy, with numerous projects nearing completion or successfully wrapped up.

In the UK, we have seen exceptional work delivered at Coventry Sidings for West Midlands Trains, Northampton Depot for Fenix Rail Systems, and the continued high-quality project support at Cambridge for Alstom. We are also proud to have completed the long-running Feltham Project, successfully navigating through all its various phases.

Across the water in Ireland, we have accomplished several significant milestones.

We completed the design and build of the ESB Networks Batch 3 Link and the Enabling Works Contract for Irish Rail. The completed enabling works have paved the way for a new Greenway link between Malahide Demesne and Newbridge Demesne over the local estuary.

Additionally, we successfully executed the foundation works and installation of five new Overhead Line Equipment (OHLE) masts at the Inchicore Training Centre.

These achievements are a testament to our team's dedication, expertise, and commitment to delivering projects on time, to the highest standards and, most importantly, with a strong emphasis on safety. We can all take immense pride in what we have accomplished so far this year.

Looking ahead, the coming months promise to be equally as busy, with numerous new projects on the horizon. To meet those demands and maintain the high standards we've set, we will be expanding our Global family by welcoming new team members. This growth is a reflection of our success and the trust our clients place in us to consistently deliver top-notch results.

I would also like to take this moment to extend a special thanks to some of our colleagues who have gone above and beyond in their contributions outside of work. A heartfelt thank you to Tony Nieli (GRCL Plant & Vehicle Coordinator), Barry Smith (GRCL Project Manager), Phil Churchill (GRCL Material & Plant Coordinator), and Sam Eva (GRCL Estimator), who participated in a charity kart race in aid of Herts Young Homeless.

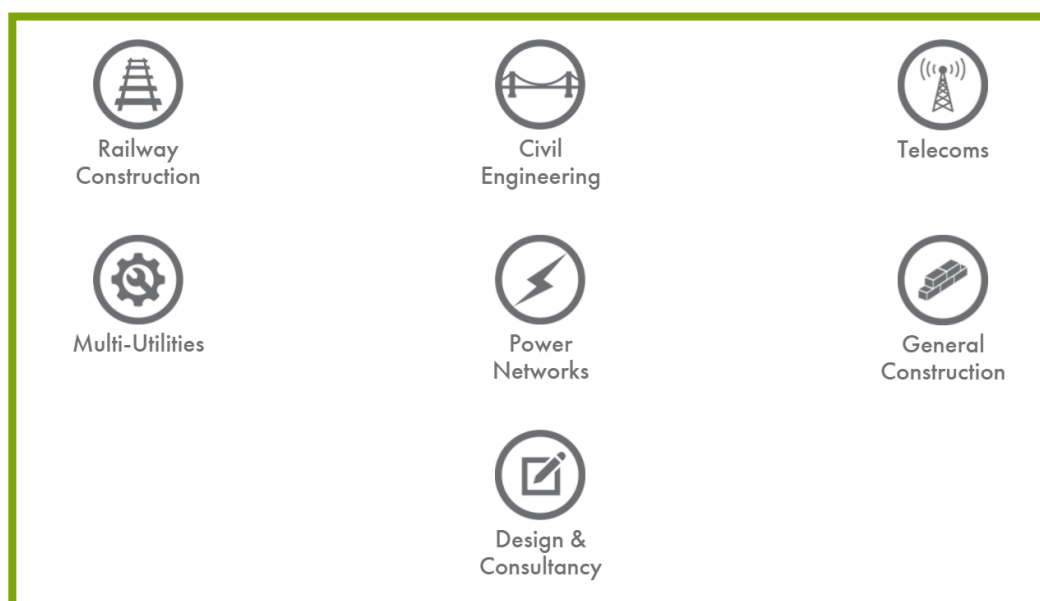
Their tremendous effort not only showcased our team's spirit but also helped raise vital funds for some of the most vulnerable in our society. Additionally, a special shoutout to Tony Nieli, who took part in a skydive, raising an impressive £1,145 for the same charity. Your dedication to giving back is truly inspiring.

This month, we bid farewell to Sean Donaghey, GRCL Head of Rail Systems, who, after eight years with the Global Rail family, has decided to retire and spend more time with his loved ones. Sean's contribution over the years has been invaluable, and we wish him all the best in this new chapter of his life. Thank you, Sean, for everything you have brought to Global Rail.

I am delighted to welcome Ethan Mullan (GRSL Project Engineer) and Isabel Baker (GRCL Administrator) to our team. I have no doubt that our colleagues will make you feel right at home, and we look forward to the fresh perspectives and skills you will bring to our organisations.

On behalf of the senior management team in both Ireland and the UK, I want to express our deepest gratitude for your hard work and dedication, which have made this year a resounding success to date. We look forward to continuing this journey together and achieving even greater things in the future.

**Niall Taaffe - Operations Director
Global Rail Construction**



Passionate

Committed in heart and mind to whole-heartedly embrace our core values and culture, without exception.



People

Growing our organisation from within, promoting and empowering our people, inspiring them to be the best they can be.



Professional

At all times we act with integrity, providing quality service, reliably and responsibly.



Teamwork

Working collaboratively whilst supporting and respecting each other's views.



Responsible

To consistently deliver quality, on time, safely and to budget whilst protecting our communities and the environment.





West
Midlands
Railway



London
Northwestern
Railway

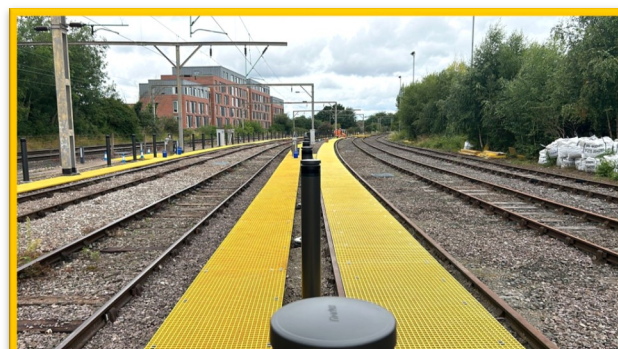
Operated by West Midlands Trains

Global Rail Construction Limited (GRCL)

is pleased to confirm completion of a new accommodation block installation for West Midlands Trains (WMT) as part of their Coventry Sidings Project.

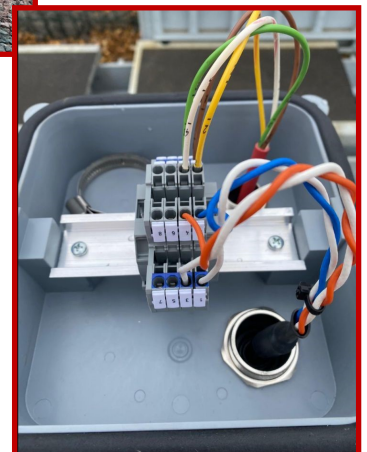
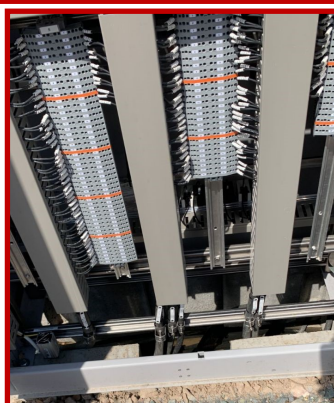
The building modules were meticulously positioned with precise lift planning and a detailed temporary works design, to ensure the safety and integrity of the surrounding live rail infrastructure. Additionally, a new DNO cubicle was seamlessly installed. Construction of new GRP walkways for the sidings are now progressing smoothly, with installation of the CET pump room equipment, completion of external rendering and testing and commissioning activities all well underway too.

Thank you to the team for their meticulous planning, design and implementation.





Global Rail Construction Ltd (GRCL), is pleased to support **Fenix Rail Systems** on the Northampton Gateway project, focusing on signalling installation. The scope of work includes the installation and cable terminations of Frauscher & Pintsch axle counters, 4-aspect main signal heads, position light and miniature indicator signal heads, TPWS systems, location case terminations, point machine terminations, disconnection box terminations, GAK terminations, as well as signal head alignment and sighting. Additionally, the project involves cable testing and certification, including the termination of multiple 48-core and paired cables. Our GRCL team has consistently delivered high-quality work, a standard that has been recognised by our client and the Test & Commissioning staff through very positive feedback. The collaborative effort of everyone involved has been crucial to the success of this project, ensuring that we all achieve our goals together.





Our **Global Rail Construction** (GRCL) team is delivering high quality railway civil engineering on the C3R project for key client **Alstom**.

Work scope recently delivered included:

Installing PSP Bases and Ancillaries -

this involved setting up Principal Supply Point bases and associated equipment, which are crucial for the electrical and signalling infrastructure of the railway.

Installing Distribution Boxes -

vital for managing the electrical distribution across the railway network, ensuring reliable power supply to various components.

Setting up a SMIO staging platform at Meldreth -

this platform supports the Signal Maintenance and Installation Operations team, facilitating maintenance and upgrade activities.

Creating a New Access Point and Car Park at Ely -

constructing a new access route and parking area, improving accessibility, and supporting the operational needs of the project.

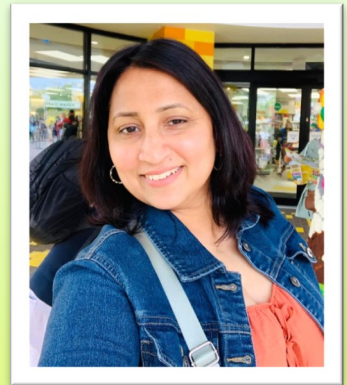
As we approach the commissioning stage, our work remains focused on completing all necessary lineside civil installations in good time. These efforts are essential for ensuring a successful and seamless transition to full operational use.

**THANK YOU
VAS VANCEA
(Project Manager)
&
TEAM**



A DAY IN THE LIFE OF

**In this issue, we meet Ruvinisha (Nisha) Kannangara
IT Manager for Global Rail Construction**



Could you describe one of your typical workdays?

I typically plan my day the evening before, organising tasks based on their urgency and importance. However, due to the nature of my job, I sometimes need to prioritise unplanned tasks over those I've already scheduled to meet business needs.

Tell me about how you got into your line of work.

I got into this line of work because I've always been passionate about technology and solving complex problems. My curiosity led me to explore various aspects of IT, and over time, I honed my skills in areas that I found most intriguing. My passion and determination drive me to continuously seek out opportunities for improvement, both in my work and in the solutions I develop. This commitment to growth has been a key factor in my career path.

What skills are required in your position on a day-to-day basis?

Key skills include IT technology and related technical expertise, communication, critical thinking, teamwork, adaptability, and time management, among many others.

What parts of your job do you find most challenging?

The most challenging part of my job is meeting specific targets and timelines, especially when working with larger teams. Coordinating efforts across multiple people can be complex, and ensuring everyone stays aligned with the objectives while managing different working styles and schedules can be difficult.

What do you find most enjoyable?

What I find most enjoyable is connecting with kind people who share a genuine smile. It creates a positive and uplifting environment that makes the workday more pleasant and fulfilling.

Are there any negatives to your job?

There aren't any real negatives to my job, as long as I maintain a positive perspective. Challenges are part of the process, but with the right mindset, they can be opportunities for growth.

For your role, if you could give someone one piece of career advice, what would it be?

If I could give one piece of career advice, it would be to take responsibility for yourself and always strive to be your best. Consistently bringing your best effort to everything you do will not only drive your success but also help you grow and adapt in your career.

What are your hobbies?

My hobbies include singing (with myself as the audience!), listening to music, dancing, and reading novels and Translations.

Who has been the biggest influence on your life?

The biggest influence on my life has been my mother. Her support, guidance, and example have shaped who I am today.

What are the most important lessons you've learned in life?

The most important lesson I've learned in life is that nothing comes for free. All worthwhile achievements require hard work and effort to earn.

What are you proudest of?

I'm proudest of seeing how far I've come and believing in myself as a kind and compassionate person.

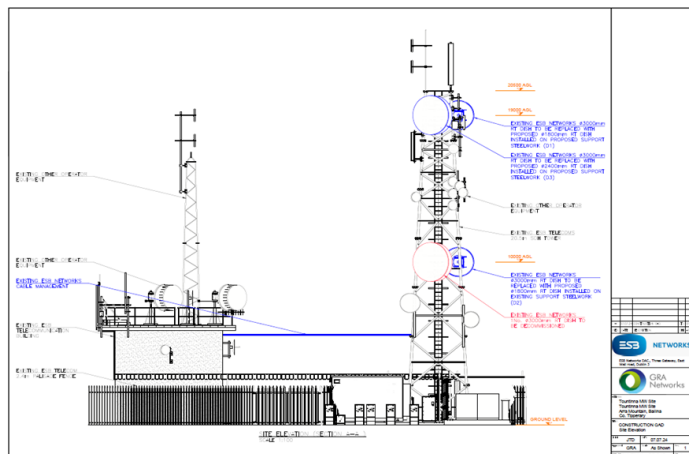
THANK YOU NISHA, FOR YOUR TIME



ESB Networks Batch 3 Link Installation

GRA Networks have been engaged by ESB Networks to install high priority telecommunication links on their backbone network to make provision for the future rollout of LTE on their network. These works are on a design and build basis. We also provide maintenance support to ESB Networks on UHF, Scada and Pole and Radio Systems.

ESB'S main transmission site at Tountinna



Network Design

GRA Networks provide a full survey design service to ESB Networks



Typical rooftop dish installation



A typical link upgrade involves the installation of two 2.4m dishes at two separate locations. Each dish is lifted into place by crane and secured by our rigging teams. Once the equipment installation is complete, our team will align the link and commission the active equipment.



Global Rail Services has successfully completed a complex and challenging Enabling Works Contract for Irish Rail for a new Greenway link between Malahide Demesne and Newbridge Demesne over the local estuary.

Global Rail Services' multi-disciplinary enabling works involved the strengthening of the existing OHLE mast. The strengthening works involved the installation of 33 No self-drilling, micro piles, through rock armour, sand and clay 12m deep, the construction of pad foundations, and disconnection and subsequent reconnection of the cables stays.

All works were completed in close proximity to the OHLE line, under TSC protection. Track monitoring, vibration monitoring and tilt monitoring were implemented throughout the project to always maintain the safe running of the lines and trains as well as the safety and wellbeing of the passengers.

The works were completed in a SAC (Special Area of Conservation). Suitable environmental protection and control was implemented throughout the project to protect the area and remove any impact on the inherent wildlife.

Significant challenges were faced throughout the construction due to unforeseen ground conditions, but with constant collaboration between Irish Rail and Global Rail Services' colleagues, together, we were able to successfully solve the issues and maintain program in order to allow the main works to commence on time.

The overall project is being funded by the NTA and led by Fingal County Council and our successful rail systems works proceed the new link being completed by Jons Civil Engineering Company Ltd., which has just commenced and is due to be completed in 2026.

The Greenway will be comprised of new and existing sections of pathways and roads in both Malahide and Donabate, with new infrastructure also extending across agricultural lands to link with the Donabate Distributor Road and Corballis East land to the South. The Estuary itself will be bridged alongside the existing rail line by a new 180m long, 12-span bridge constructed on piers which were placed by Fingal County Council to facilitate this future development.

The scheme will provide a vital and highly anticipated connection between Malahide and Donabate, offering an alternative to car or public transport travel between the two locations, opening up greater access to the region.





Inchicore OHLE Training Centre - Foundation & Mast Installation Works

Global Rail Services are delighted to announce the successful completion of the foundation works and installation of five new Overhead Line Equipment (OHLE) masts at the Inchicore training centre. This crucial project aims to enhance Iarnrod Eireann OHLE training facilities.

The Inchicore training centre, which already features a section of track and various training elements, will now benefit from the newly installed OHLE masts. These masts are essential for supporting the new OHLE systems that will be used for training and development.

General description of the works

- The site boundaries were established with temporary fencing and Global Rail Services signage to delineate the work area, with access via the main entrance to Inchicore Works on Inchicore Parade Co. Dublin.
- Existing services were located and protected prior to the commencement of any works to avoid disruption and ensure safety of all assets and personnel.
- Two piles were designed and constructed to support the new columns.
- The excavation, installation and backfill of 3 pre-cast foundations were carried out as per outlined drawings and specifications.
- The excavation, FRP, and backfill of 2 in-situ foundations were constructed, ensuring robust support for the terminating masts.
- The masts were then installed upon the 3 pre-cast foundations and 2 terminating in-situ foundations via Hiab Crane and MEWP. With the terminating masts being raked to accommodate deflection of the installed OHLE. The on-site team successfully navigated their way through the high-risk challenges associated with working at heights.
- Armco barriers were then designed, supplied, and installed according to TII's specifications and documents.



Pre-cast foundation boxes installed to support the new columns



In-situ foundation boxes installed to support the new terminating columns



Working at heights to install the columns



Upon completion of the construction activities, the site was de-mobilised, restoring the area to its prior condition and ensuring minimal disruption to the surrounding residential properties.

The successful completion of the foundation & mast installation works marks a significant milestone in the development of the new OHLE training centre at Inchicore.

This achievement highlights Global Rail Services collaboration with Iarnród Éireann to enhance existing facilities while maintaining a harmonious relationship with the surrounding residents by minimizing noise and disruption.

Global Rail Services extends its sincere gratitude to everyone involved for their hard work and dedicated collaboration, which were instrumental in making this project a success.



Armco rails installed to protect the newly placed columns

**Thank You Team
For The Excellent Workmanship**



Our vision is that everyone arrives for work healthy and leaves for home safely, everyday.



Laytown UBB72 Masonry Repairs and Scour Protection Works Completed

Global Rail Services (GRS) is proud to announce the successful completion of a critical project, involving complex masonry repairs and scour protection works at UBB72 in Laytown, Co Meath.

UBB72 and its surrounding area will now benefit from the restoration works at both bridge abutments. The newly installed rock armour will preserve the integrity of the shoreline at the Northern Abutment preventing erosion for years to come. Whereas the masonry repair works carried out at the Southern Abutment will improve the structural durability, providing long-term stability and protection against environmental factors, vibrations, and other stresses.

The site boundaries were established with temporary fencing and Global Rail Services signage to delineate the work area, with access via Coastview Cottages Road. Existing services were located and protected prior to the commencement of any works to avoid disruption and ensure safety of all assets and personnel. GRS coordinated with both Meath County Council and Iarnród Éireann respectively to ensure an effective environmental, traffic, and pedestrian management plans were planned and executed with the relevant permits and informative letter drops put in-place to mitigate the hazards and disruptions to the surrounding community.

Southern Abutment Masonry Works included:

- Core holes were drilled and grouted at 1m centres.
- 9m hollow bar mini-piles were installed and capped with pattress plates, lock nuts, and end caps.
- Cross-stitching with SS ribbed bars and repointing of the wall was meticulously executed.



Southern Abutment Masonry Repairs



BEFORE
Washed Out Embankment at the Northern Abutment



AFTER
Newly Installed Rock Armour at the Northern Abutment



Northern Abutment Scour Protection Works

Works included:

- Vegetation was stripped, and materials were transported, avoiding shore encroachment.
- Reprofilling and compaction of the washed-out embankment, followed by the installation of Teram Geotextile and rock armour.
- Installation of a three-rail timber stud rail fence around the embankment perimeter.

The project's success is a testament to the collaborative efforts of Global Rail Services' dedicated teams and their external stakeholders. Innovatively navigating through complex technical requirements, traffic management, and environmental guidelines, whilst ensuring minimal disruption to the local community.

This achievement highlights Global Rail Services collaboration with local County Councils and Iarnród Éireann, to ensure the successful completion of projects whilst minimising the disruption to the surrounding community.

Global Rail Services
 extends its heartfelt thank you to everyone involved
 for their hard work and dedicated collaboration
 in making this endeavor a success

Global Rail Services

Unit 516a Grants Rise
 Greenogue Business Park
 Rathcoole, Co Dublin
 D24 FH56
 Ireland

+353 (0) 1 458 8540

Global Rail Services has proven experience in delivering some of the most exciting projects across a diverse range of service sectors.

Our in-house capabilities, our scale and our supply chain partnerships have allowed Global Rail Services to deliver complex multi-disciplinary projects that make a positive difference to our clients, across the Irish infrastructure industry that we serve.

Stay Safe

When driving to and from Whittlesey, Manea, and March, as well as the surrounding areas, you'll find that the roads between the three Atkinsrealis worksites are primarily rural, winding through farmland and natural landscapes. Some sections of these roads are narrow, only allowing space for a single vehicle to travel in one direction. Hidden bends, dips, water-filled ditches, unstable road edges, adverse weather, and other factors can make these roads particularly hazardous. Even though many parts of these roads may have 60mph speed limits and appear relatively straight, it is not advisable to reach those speeds due to the conditions mentioned above. For your safety, it's crucial to remain fully focused on the road and minimise any distractions while driving, such as using a phone or eating. Keeping your attention on the road is the best way to ensure a safe journey and avoid accidents on these challenging roads.

Examples of past and recent accidents on these roads



On July 17th, 2024, around 2:11 p.m., a gold Renault Clio was traveling northbound on the B-road from Whittlesey towards Thorney when it veered off the road and plunged into a water-filled ditch. Tragically, the front seat passenger sustained fatal injuries and was pronounced dead at the scene.



On August 14th, 2024, at approximately 11:35 a.m., an operative was driving down the same road to pick up materials when a large articulated lorry approaching from the opposite direction moved slightly closer to his pick-up to give way to an oncoming lorry. As a result, the operative's pick-up slid off the road and tipped onto its side in a ditch. Although the operative was not injured, he was badly shaken when he exited the vehicle.



Sean Donaghey, Head of Rail Systems at GRCL, has announced his retirement after almost 8 years of dedicated service with Global Rail Construction.

We extend our deepest gratitude to Sean for his loyalty, dedication, and hard work during his time with us.

We wish him all the best in his future endeavours.



We are absolutely delighted to announce that Andy Fingleton (GRCL Supervisor) is the winner of this month's **RSK Technical Services** divisional award,

Client Care Champion

RSK Technical Services had lots of wonderful entries, but the judges were so impressed by Andy's dedication, not only to clients, but also to Global Rail Construction and the teams he leads.

Client Care Champion **RSK** TECHNICAL SERVICES

Claire Elms (RSK Divisional Director – Technical Services Division) said the following:

"We loved reading about how you continually go the extra mile in your role, and you are more than deserving of this month's award – congratulations!"

Your nominator said:

"I am nominating Andy because he really embraces the core values and culture of the business by always going the extra mile to ensure our clients are totally satisfied with our works while keeping his site and project delivery team safe and organised at all times. He runs an excellent site and ensures all business requirements are met in full and without fail. He also chairs the safety coach meetings each month on his projects and provides regular feedback to both our HSQE and project management teams. Andy has been with the business since its inception over 23 years ago, and through his absolute hard work, respect and passion to see the business grow and continue to deliver safely, he ensures he manages his responsibilities each and every time, without fail. He also takes the business's social value requirements seriously and, among other support he provides, he also attends and is involved in the annual Herts Young Homeless sleep-out each November, raising invaluable funds for a fantastic charity."





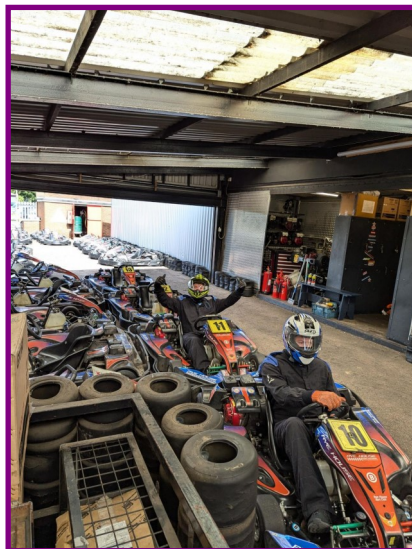
Supporting Vulnerable People in Hertfordshire

Global Rail Construction Limited (GRCL) has a long term charity partnership with **Herts Young Homeless (hyh)**, a local concern that is tackling youth homelessness in our community. In support of them, some of our team recently participated in a charity track day, at Rye House Kart Raceway. This famous and historic venue, has become the UK's foremost karting centre and offers the perfect introduction into the world of motorsport and a great opportunity to enjoy the thrills and exhilaration of go-karting.

GRCL's karting team were represented by Tony Nieli (Plant & Vehicle Co-Ordinator), Barry Smith (Project Manager), Phil Churchill (Material & Plant Co-Ordinator) and Sam Eva (Estimator). We would like to thank them for representing GRCL at this event and for the funds received - which all go directly to our charity partner Herts Young Homeless.

Sam Eva said the following about the event:

"We finished 7th out of 12. We held a strong 4th place for most of the race but after a few collisions which resulted in our kart having to be swapped over, we then dropped down to 10th. Barry Smith managed to bring us up to 7th in the last 15 mins. It was truly a fantastic day overall."



Supporting Vulnerable People in Hertfordshire



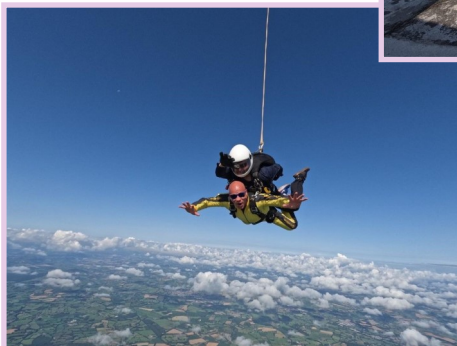
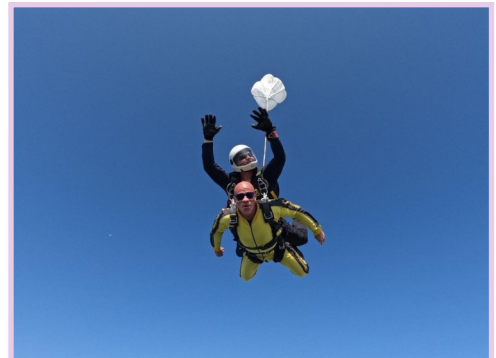
Tony Nieli, Plant & Vehicle Coordinator at **Global Rail Construction Limited**, has successfully completed a Skydive, and in doing so has raised an impressive £1,145 for local charity partner Herts Young Homeless (HYH). The jump took place on Saturday morning, July 27th, 2024, in Devon with Skydive Buzz.

HYH expressed their gratitude, stating:

"Now that the Skydive is behind us, I would like to personally thank you on behalf of all of us here at HYH. Your support is deeply appreciated."

Fundraising contributions make a significant impact on the lives of people in crisis who are either homeless or facing homelessness, helping us provide essential services to support them."

Thank you for your generous donations to this worthy cause.



Our Vision

Every young person has a safe home from which they can grow and thrive

Our Mission

To break the cycle of youth homelessness in Hertfordshire through education, advice and support for young people and their families.



THE PWI



Founded in 1884, the PWI—Professional Engineering Institution—has been a cornerstone of knowledge leadership in the field of rail infrastructure engineering for over 130 years. Working closely with leading organisations and government bodies, the PWI influence and directly impact industry training, management and competency standards – and have done so from their earliest years. Throughout their history, they have championed industry science, research, and innovation by bringing together and growing a solid,

global community of enthusiastic engineering practitioners, including many experts in the field. Every year the PWI hold a golf day and this year we had our very own Global Rail Construction Team being represented by Jim Cuell (Commercial Director) and Nick Ansell (Business Development Manager).

The PWI Golf Day was a spectacular day on the green. The day was spent enjoying fantastic golf, perfect weather, and excellent company from both Members and guests.

With around 50 players competing for the much-coveted PWI Player of the Year and Guest Team of the Year titles, the eventual winners were...

Sponsors Team Trophy Winners: **Global Rail Construction Limited**

Runners-Up:

Deploy

PWI Champion:

Andy Mansfield

Runner-Up:

David Cartledge



Core Values



Passionate

Committed in heart and mind to wholeheartedly embrace our core values and culture, without exception.



People

Growing our organisation from within, promoting and empowering our people, inspiring them to be the best they can be.



Professional

At all times we act with integrity, providing quality service, reliably and responsibly.



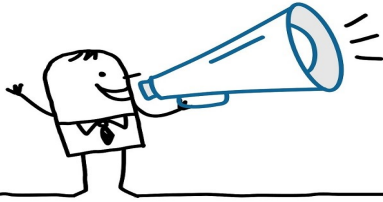
Teamwork

Working collaboratively whilst supporting and respecting each other's views.



Responsible

To consistently deliver quality, on time, safely and to budget whilst protecting our communities and the environment.



Welcome To The Global Family...



Ethan Mullan
Project Engineer



Isabel Baker
Office Administrator

HAPPY BIRTHDAY

A very Happy **40th** Birthday to Vas Vancea
(GRCL Project Manager)

who celebrated his birthday in August.

We all hope you had a wonderful time celebrating this milestone birthday

Happy birthday
40th



Our USP is without doubt our people and our long-term strategy will ensure we continue to invest in and develop our people to enable us to deliver our customers expectations, in an efficient and consistent manner



Part of the RSK Group of companies

A Leading Provider Of Turnkey Solutions For The Rail Industry



Railway
Construction



Civil
Engineering



Telecomms



Multi-Utilities



Power
Networks



General
Construction



Design and
Consultancy

Combining technical and innovative excellence with a
real passion for detail and safe delivery of projects

www.theglobalinfrastructuregroup.com