



Part of the RSK Group of companies

Issue 41 2024

# GLOBAL NEWS



In This Edition.....

- \* Project News
- \* New Starters
- \* Celebrations
- \* A Day In The Life...

[globalnews@grcl.co.uk](mailto:globalnews@grcl.co.uk)

# Foreword

**Welcome** to another edition of Global News and our final one for 2024.

I hope you all agree that this publication provides valuable and informative updates across our businesses and is a fantastic communication mechanism where the various organisations across GiG can keep up to date with new developments, projects and personal achievements.

This publication is a really positive way to sign-off 2024, so please enjoy the read. Thank you to everyone who has contributed to this and previous editions with particular thanks to Una Tearle for putting the time and effort into collating all the details that make our Global News the hit that it is!



We are now over a year into our affiliation with RSK and during that time we have met and worked with several people across the RSK group of businesses. We have continued to grow and truly establish ourselves within a number of industries, whilst delivering a wide range of projects safely and successfully throughout. In the UK, the change of Network Rail Control Periods (April 2024) has seen a real shortage of works throughout the industry and especially in year 1 of CP7. This is 'usual practice' during the change of Control Periods; however, this has been one of the most challenging and difficult CP periods the industry has ever experienced. On a positive note, GRCL have successfully secured a number of projects on both NR and TfL infrastructures which has kept us considerably busy and out of mischief, during this period, whilst also providing the opportunity to be involved in final discussions for a number of large opportunities where clients have decided to partner with ourselves as a single source opportunity. These arrangements continue to strengthen our relationship with our esteemed client base whilst also providing medium to long term projects for our business.

Global Rail Services/GRA Networks in Ireland continue to also grow from strength to strength, delivering some key project milestones on the ESB Telecoms Tower (B&M) Framework, Bogganstown site development, Dart+ BEMU and key projects in both Tipperary and Maynooth. We have also secured some major project wins with Irish Rail including Electrical Modification of Locos and MK IV, Maynooth Station Accessibility Construction Works and the follow-on renewals of Telecoms National Maintenance and Electrical Support Services.

The above can only be achieved if we continue to deliver all of our responsibilities professionally, safely and to our client's expectations, in a cost-effective and efficient manner. This is largely down to our excellent team and people on our project sites delivering key works consistently and to program.

The future looks incredibly positive and we should all be extremely proud to have grown our business into a leading global organisation; and the opportunity to continue to grow and develop our business's within our current and new industries with the support of the RSK Group.

And of course, the success of Global Rail is all down to you – the Global family. This incredible journey could not have been achieved without the dedication, hard work and commitment from each and every one of you – that's what makes this Company so great and us so proud.

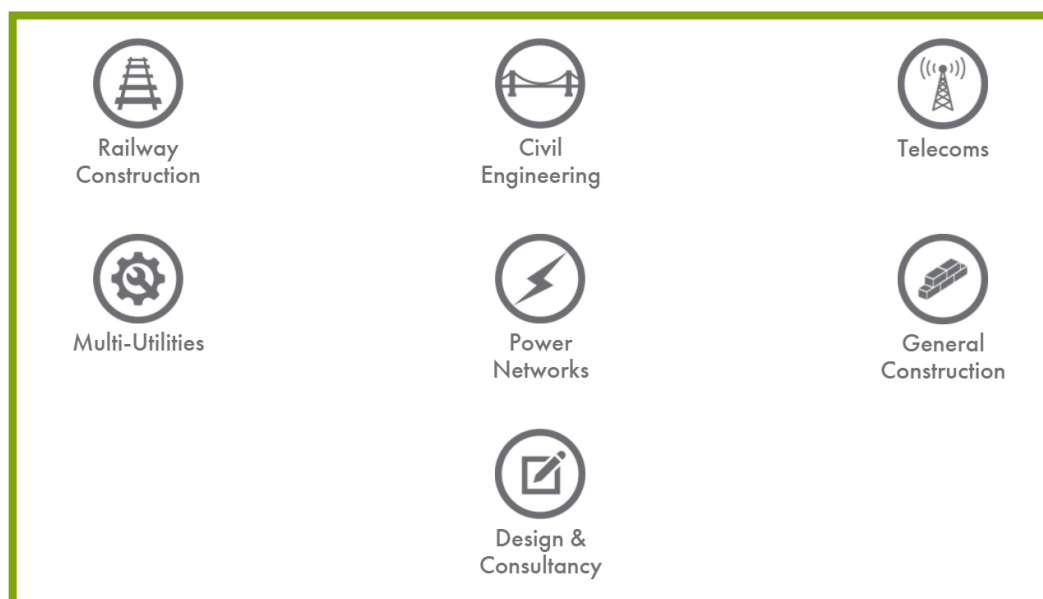
We have been fortunate to share in many positives and successes throughout the year, and although I and the senior leadership team are delighted with our continued performance, it really is a reflection of our fantastic people, technology, partners and 'can do' attitude that ensures we continue to deliver safely and consistently. Our focus and direction have always been to ensure we are 'best in class' and to insist through everything we do, we always keep our people safe – that is our priority. We will always ensure that the health, wealth and safety of our people, our clients, supply chain partners and public, are of paramount importance and priority and precedes everything we do.

Finally, I would also like for us all to take a moment to reflect on those who are no longer with ourselves but live on in our hearts and will always be remembered as part of the Global family. Wishing you and your families a very happy Christmas and healthy and happy new year. Take care of yourselves and each other and I look forward to catching up with you all in 2025.

Kind regards



**Marco Lombardelli**  
**Managing Director**





## Promise & Principles

**Global Rail Construction Limited (GRCL)** is delighted to launch its **Promise & Principles Charter**

The Charter has been aligned to GRCL's five Core Values;

### **Passionate**

committed in heart and mind to whole heartedly embrace core values and culture, without exception;

### **People**

growing the organisation from within, promoting and empowering its people, inspiring them to be the best they can be;

### **Professional**

at all times acting with integrity, providing quality service both reliably and responsibly;

### **Teamwork**

working collaboratively whilst supporting and respecting each other's views;

### **Responsible**

to consistently deliver quality, on time, safely and to budget whilst protecting the communities served and the environment.

The Charter expresses a commitment signed by the UK leadership team, to create a shared understanding of what the business believes, how it behaves and what it aspires to be. Moreover, it brings its people closer together, establishing a pledge to deliver continuously improving services, and is at the very core of what GRCL does.

GRCL want to become the partner of choice for their people, clients and the communities they serve. Being very aware that this is a privilege, GRCL are striving for perfection every day, and by having defined standards in place, are able to measure its performance against its promises, which will help to deliver service and support of the highest quality. Putting its clients first allows the business to earn trust and build long-term relationships.

This Promise and Principles Charter is therefore, more than just words, it's about delivering responsible business behaviour that supports the railway community, its people, the environment; providing a legacy for future generations.





# Promise & Principles Charter



## Passionate

Committed in heart and mind to whole-heartedly embrace our core values and culture, without exception.

To ensure we have a great place to work, one where our employees, clients, supply chain partners and the local community have trust in the people they work with, have pride in the work they do, and enjoy the people they work with. We will always: -

- be dedicated and proud of everything we achieve.
- drive creativity and innovation.
- ensure we impact positively on our peers, clients, stakeholders and the general public.



## People

Growing our organisation from within, promoting and empowering our people, inspiring them to be the best they can be.

Prioritising our people and purpose, we will create a culture of happiness and success that will set us apart, whilst ensuring long-term growth and profitability for our business. Focussing on our values that align with the greater good, we will create a positive and lasting impact on the world. We will always: -

- self-develop and grow organically.
- be honest by creating a culture where truth is at the forefront.
- create a workplace and company culture that will attract talented people.
- put our people at the heart of everything we do.



## Professional

At all times we act with integrity, providing quality service, reliably and responsibly.

By being professional, we play a crucial role in shaping our workplace culture, influencing how we interact with each other, make decisions and contribute to the organisation's overall success. This creates a positive work environment, builds client and supplier trust and enhancing our reputation. We will always: -

- be accountable for our actions and decisions made.
- be consistent and exceed expectations in our workplace
- help support our colleagues when required.
- be polite, courteous and humble.



## Teamwork

Working collaboratively whilst supporting and respecting each other's views.

We will work together and create a team environment that allows our people to bring their diverse perspectives to problem solving, which in turn increases our success at arriving at solutions, more efficiently and effectively. The contributions of everyone are extremely valued and respected and these characteristics will encourage trust and help foster strong relationships, throughout our team. We will always: -

- encourage clear, frequent and consistent communication at all levels.
- build diverse and inclusive teams.
- lead by example.
- encourage collaboration throughout all departments of the company.



## Responsible

To consistently deliver quality, on time, safely and to budget whilst protecting our communities and the environment.

We are committed to ensuring every member of our team understands what their roles and responsibilities are to support and nurture a fully cooperative, responsible and efficient team. We will always: -

- be responsible and foster a great sense of trust and collaboration, leading to stronger relationships within our workplace.
- be conscious of our own and others work life balance.
- treat people as we would like to be treated.
- be honest and accountable in everything we do.
- committed to where possible, aligning our work with the 17 United Nations Sustainable Development Goals. We pledge to actively support and promote sustainability in all aspects of our operations by fostering equality, advancing climate action, reducing inequalities, and driving innovation for a more just, inclusive, and environmentally responsible future.

Signed:

Marco Lombardelli

Signed:

Jim Cuell

Signed:

Niall Taffe

Signed:

Nick Turner

Signed:

Richard Horsted

Signed:

Nick Ansell



The National Rail Awards celebrate achievements and excellence across every aspect of the railway, from senior management to individuals on the front line, as well as safety triumphs, major engineering successes, and environmental sustainability. They recognise outstanding accomplishments over the past year, but particularly look to highlight initiatives which deliver measurable improvements in performance.

By doing so, the rail industry 'Oscars' seek to promote the industry's longer-term success and sustainability, which relies on a highly skilled, diverse, motivated and engaged workforce, and exceptional leaders.

**The award for outstanding Teamwork in the 2024 National Rail Awards went to AtkinsRealis, Network Rail and Global Rail Construction for the Feltham & Wokingham Area Resignalling Programme Team.**

AtkinsRealis, Network Rail and Global Rail Construction undertook a significant challenge with a £185m project aimed at improving signalling reliability and performance by 25% over an 80-mile stretch of South Western Railway's network controlled by the Feltham Area Signalling Centre and Wokingham signal box.

Commenced in 2019, the five-year programme was conducted in six phases and 160 weekend possessions to renew more than 500 pieces of life-expired equipment including 21 interlockings and 275 signals, last upgraded in 1974 and increasingly difficult to maintain.

13 level crossings were also renewed or upgraded while signalling control was migrated to the Wessex rail operating centre in Basingstoke.

The three organisations opted to focus on team inclusion, empowering staff and fostering a healthy 'challenge' culture throughout the works. This was facilitated by regular stand-up feedback sessions, implementation of behavioural safety programmes, co-location in Croydon to promote better communication, weekly engineering forums and deliverability sessions with train operators.

Advanced teamworking strategies were further aided using immersive 3D and 4D model displays for collaborative design and delivery methodology development.

Safety performance was impressive with no RIDDOR events reported in over one million work hours and up to 180 people on site.

The judges said successful delivery throughout the Coronavirus pandemic ***"demonstrated resilience and ensured continuity of service"***.

They added: ***"This entry showcased behavioural change in team dynamics, culture, and practices which have positively impacted the project and are indicative of lasting benefits for the future."***

Marco Lombardelli, Managing Director for Global Rail Construction, said: ***"We were absolutely delighted to be nominated and for the project to be awarded the outstanding teamwork award. This is fantastic testimony to a project team that worked as a totally unified and collaborative team to ensure this incredibly challenging portfolio of works were delivered safely and successfully."***











Global Rail Construction (GRCL) is delivering a 3-year sub-contract programme of GRIP 6-8 railway civil engineering works, directly on behalf of valued client and Cambridge Resignalling Principal Contractor and Designer, Alstom. Works are progressing extremely well. Images below show our teams having completed a new PSP base, transformer base, mobile generator base, route works, bollard installations, new fencing and an armco barrier installation at Great Chesterford.

The Resignalling scheme is a condition led renewal, where a significant number of level crossings will be either renewed or modified as part of the project. The scope covers areas controlled by Cambridge, Dullingham, Chippenham Junction, Bury St Edmunds, and Colchester signal boxes.





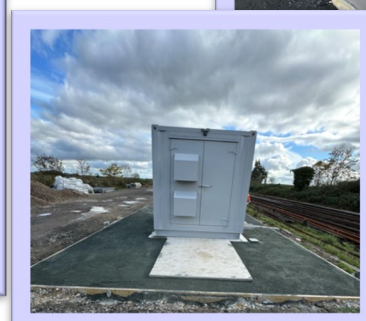
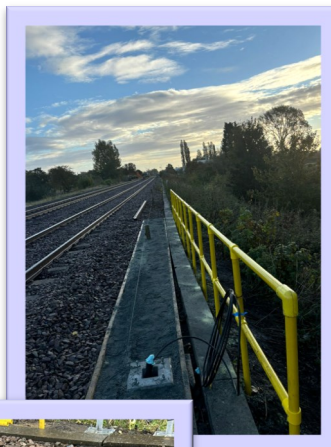


**Global Rail Construction (GRCL)** successfully completed the first phase of the Anglia Signal Structures Modernisation (A2SM) project in partnership with AtkinsRéalis. Key achievements include:

- Installation of 5 new signal posts, complete with associated hardstand and laydown areas.
- Installation and energisation of 2 cPSPs.
- Installation and energisation of multiple signaling location cases.
- Modifications to existing signaling location cases and signaling rooms.
- Installation of Insulated Rail Joints (IRJ).
- DC track circuit installations.

**All works were delivered safely and incident-free, and over £200 was raised in support of local nursery, Alphabet Day Nursery in Whittlesey.**

**Thank you Team for your dedication, hard work, and generosity.**



# A DAY IN THE LIFE OF .....

**In this issue, we meet Martin Jose, CAD Technician for Global Rail Construction**

## **What does a typical workday look like for you?**

As a CAD Technician in the railway industry, my day revolves around creating, modifying, and reviewing detailed technical drawings and plans for rail projects using advanced CAD software. I work closely with engineers and project teams to ensure our designs meet industry standards and project specifications. My responsibilities also include updating existing drawings based on feedback, conducting quality checks, and maintaining well-organised documentation for all design files. Additionally, I attend regular project meetings to discuss progress and resolve any technical challenges.



## **How did you get into this line of work?**

I began my career in the railway industry after completing a degree in Electrical Engineering. With a keen interest in both engineering and technology, I was drawn to the chance to work on the design and layout of railway systems, with a focus on safety and efficiency.

## **What skills are essential in your role?**

To succeed in my role, strong technical proficiency in CAD software is critical for producing precise designs and drawings. Attention to detail is also key to ensuring that our designs comply with industry standards and specifications. In addition, effective communication and collaboration skills are vital for working seamlessly with engineers and project teams to deliver efficient and accurate design solutions.

## **What do you enjoy most about your job?**

I find it rewarding to contribute to the design and development of complex transportation systems that directly impact public safety and efficiency. The technical challenges involved in creating precise, detailed designs for railway infrastructure allow me to continually refine my skills and grow professionally.

## **Are there any downsides to your role?**

One challenge in my position is managing tight deadlines, which sometimes means putting in extra hours to meet project milestones. Coordinating with multiple stakeholders can also make it challenging to maintain consistent design standards across all aspects of the project.

## **If you could give one piece of career advice, what would it be?**

My advice would be to continuously hone your technical skills and stay up to date with the latest software and industry standards. Equally important is learning how to communicate and collaborate effectively with engineers and other team members, as this is key to delivering successful railway infrastructure projects.

## **What are your hobbies?**

In my free time, I enjoy playing chess, traveling, and photography.

## **Who has been the biggest influence on your life?**

The biggest influence in my life has been my parents. They taught me the importance of kindness, hard work, and staying true to myself.

## **What are the most important lessons you've learned in life?**

The most valuable lesson I've learned is to embrace challenges as opportunities for growth. I've also learned the importance of staying true to myself and focusing on what truly matters in life.





## World Suicide Prevention Day 2024: Changing the Narrative on Suicide

**World Suicide Prevention Day (WSPD)** is observed globally on **September 10th** each year. It aims to raise awareness about suicide prevention, reduce the stigma around mental health issues, and inspire collective action to reduce suicide rates. This year's theme, "**Changing the Narrative on Suicide**", challenges the misconceptions surrounding suicide and encourages a more compassionate and informed approach to mental health.

### Suicide: A Global Public Health Issue

According to the **World Health Organization (WHO)**, nearly **700,000 people die by suicide each year**, with countless more affected by suicidal thoughts. It's a leading cause of death globally, particularly among young people aged 15 to 29. Every suicide is a tragedy that deeply impacts families, friends, and communities.

However, it's important to remember that **suicide is preventable**. By fostering an open, supportive dialogue about mental health and providing access to resources, we can help people find the support they need before it's too late.

The theme for **World Suicide Prevention Day 2024**, "Changing the Narrative on Suicide," encourages us to reshape how we talk about suicide and mental health. By addressing the stigma, myths, and misunderstandings that often surround suicide, we can create an environment where people feel safe to speak up and seek help without fear of judgment.

Changing the narrative means:

**Recognising that mental health struggles are real:** We must accept that mental health issues are just as valid as physical health problems, and they deserve the same level of care and attention.

**Understanding that suicide is complex:** It's often the result of many intertwined factors, including mental illness, trauma, and societal pressures. Simplifying or judging those who struggle can do more harm than good.

**Encouraging conversations:** Talking openly about suicide can reduce the sense of isolation many people feel. It's about letting people know they are not alone and that support is available.

### How You Can Help

There are several ways you can get involved in **World Suicide Prevention Day 2024** and help change the narrative on suicide.

#### ♦ Educate Yourself and Others:

Learn about the risk factors and warning signs of suicide, such as prolonged sadness, withdrawal from social activities, and expressions of hopelessness. Share this knowledge with your community to help others recognise when someone may need support.

#### ♦ Challenge Stigma:

Be mindful of how you talk about mental health and suicide. Avoid harmful language and instead use compassionate, non-judgmental terms. Correct misinformation when you hear it, and encourage more open discussions.

#### ♦ Support Those Struggling:

If you know someone who may be experiencing suicidal thoughts or emotional distress, reach out. Sometimes, listening without judgment can make a huge difference. Let them know they are not alone, and guide them to professional help when necessary.

#### ♦ Raise Awareness:

Share facts, personal stories, or mental health resources on social media or in your workplace. Use the hashtag **#WSPD** to spread the message about the importance of suicide prevention.

### Remember

**Talking about suicide saves lives. Let's start the conversation, and keep it going all year round.**



## \* Exciting Project Milestone for GRA Networks \*

In recent months, **GRA Networks** has proudly secured a place in the **ESB Telecoms Tower Build & Maintenance Framework Agreement**.

This prestigious framework award encompasses the installation and construction of towers as specified by ESB Telecoms.

The scope of work includes:

- Palisade-fenced compounds
- Monopole and lattice towers equipped with anti-climb barriers, access ladders, and foundations
- Outdoor concrete plinths for cabinets
- Access tracks and landscaping works

We are thrilled to share that two new sites have recently been successfully completed at **ESB Glasmore** and **ESB Bogganstown**.

This achievement highlights the dedication and expertise of our team at **GRA Networks**, and we look forward to delivering exceptional results as part of this framework.

### ESB Glasmore 110kV Station

**GRA Networks** recently completed an exciting project at the **ESB Glasmore 110kV Station**.

This development involved enhancing an existing compound within the sub-station, with a focus on critical infrastructure upgrades.

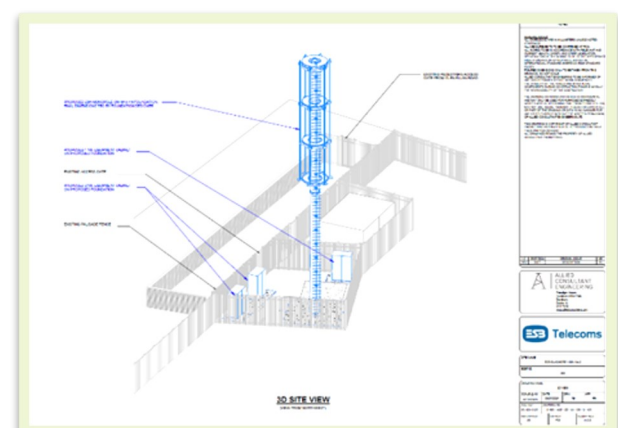
Key aspects of the project included:

- Construction of a concrete plinth to support a 20m Monopole structure
- Installation of electrical infrastructure, including earthing systems
- Provision of additional concrete plinths for ESB customer equipment
- Improvements to site access for enhanced functionality

This successful project is a testament to the expertise and commitment of our team, reinforcing our capability to deliver high-quality solutions for complex infrastructure requirements.



Plinth ready for Monopole Installation







## ESB Bogganstown – Greenfield Site Development

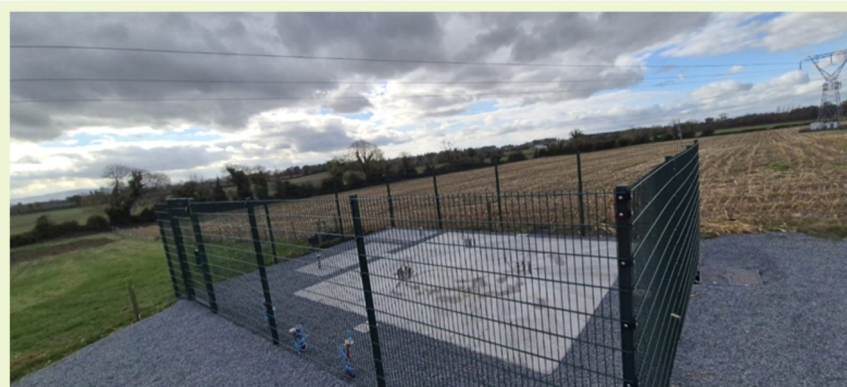
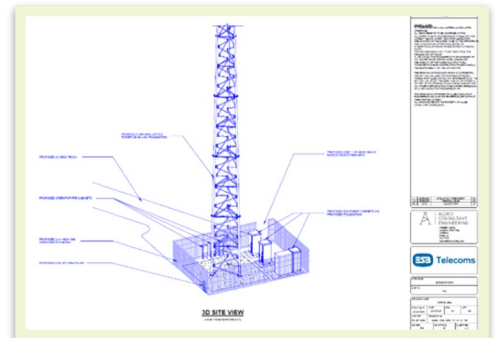
**GRA Networks** recently delivered a comprehensive telecom mast site development at **ESB Bogganstown**, a greenfield site situated within a working farm environment.

This project involved a wide range of activities, including:

- Full site development and preparation
- Construction of the tower base and installation of a 24m Lattice Tower
- Installation of boundary fencing for security
- Connection to the electricity network to support operations
- Creation of a site access road to ensure functionality and ease of maintenance



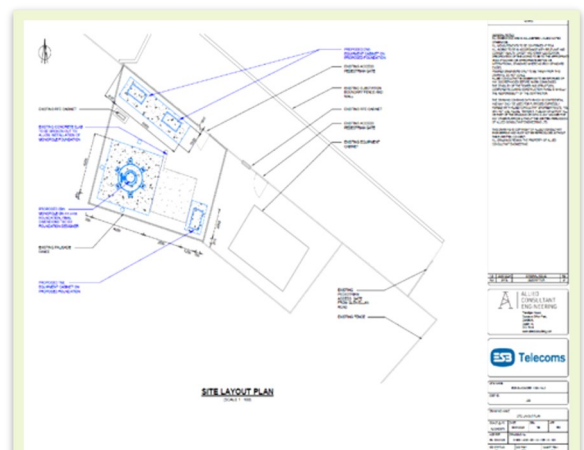
Working within a farm setting presented unique challenges, but the team executed the project seamlessly, demonstrating adaptability and expertise. This development highlights GRA Networks' ability to deliver robust telecom infrastructure solutions in diverse environments.



ESB Bogganstown Completed Site & Design



ESB Glasmore Site Layout & Improved Access





Global  
Rail  
Services



### Global Rail Services (GRS) Delivers Milestones in Ireland's Rail Infrastructure Development

As 2024 draws to a close, GRS is proud to share updates on key infrastructure projects that demonstrate our technical expertise and commitment to enhancing Ireland's transport network.

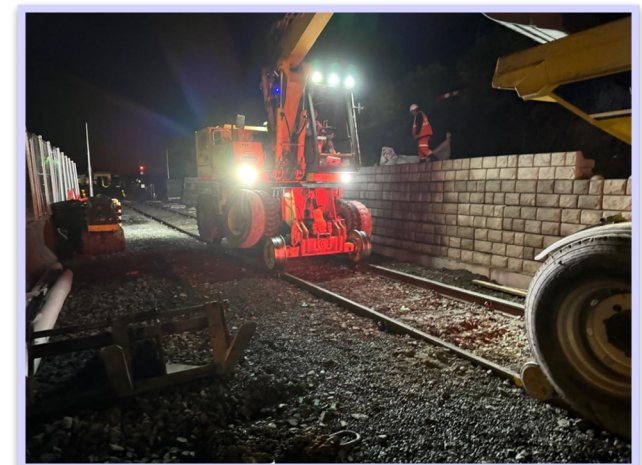
Since mobilising in October 2024, GRS has made substantial progress on the Dart+ BEMU Stabling Road Project at Drogheda Train Station, where we are undertaking the Project Supervisor Construction Stage (PSCS) role on behalf of **Iarnród Éireann (Irish Rail)**. This project is a cornerstone in advancing Irish electrified rail Services. Initial phases included establishing a site compound within the public car park, complete with welfare units and site cabins, followed by extensive site clearing and structural installations.

A key feature of this project is the installation of an 80-meter EVO GEO retaining wall with precast foundations and a 10-meter King Post retaining wall, along with embankment reprofiling to enhance stability. The EVO GEO wall was developed collaboratively by Evo Geo, Irish Rail, and GRS, offering a value-engineered solution that achieved significant cost and time savings compared to the original design. To improve trackside accessibility, GRS is constructing driver walkways on both sides of the tracks, complemented by two track crossings and three structural steel driver platforms with in-situ foundations.

Additional works included:

- Installation of two under-track crossings (UTXs).
- Placement of 43 lighting bollards with in-situ foundations and associated ducting.
- Utility upgrades, including 25 Stakkabox manholes, mini pillars, and an external distribution pillar with in-situ foundations.
- Improved site access through a newly installed gate.

This project underscores GRS's ongoing collaboration with Iarnród Éireann to enhance Ireland's rail network. We are proud to contribute innovative solutions and efficient project delivery to support the future of sustainable transportation in Ireland.





## GRS Advances Key Infrastructure Projects in Tipperary and Maynooth

### OBN21 Bridge Restoration Works in Roscrea, Co. Tipperary

GRS commenced the OBN21 Bridge Restoration Works in Roscrea, Co. Tipperary, focusing on restoring this vital bridge to ensure road safety and structural integrity.

The project began with close collaboration with Tipperary County Council and other stakeholders to secure Road Opening Licenses (ROL) and road closure permits.

On-site, the team established a temporary compound to facilitate operations. Key tasks included:

- Demolishing the existing bridge approach wall.
- Removing blacktop and road make-up.
- Installing precast approach L-units reinforced with piles for a durable foundation.

Following these structural upgrades, the road is being rebuilt and resurfaced. Safety enhancements include the installation of Armco railings on both sides of the road. Once completed, the road will reopen in accordance with the ROL, ensuring a secure and lasting connection for the local community.



GRS is proud to take on the PSCS role for Iarnród Éireann on the Accessibility Project at Maynooth Train Station. The team hit the ground running by collaborating with stakeholders to implement a comprehensive pedestrian management plan. Early milestones included establishing a secure site compound, 2.5m high hoarding, and temporary modifications to car park and platform access. These steps provide a strong foundation for delivering the

project on time in 2025.

The project encompasses critical structural and accessibility enhancements, including:

- Installing foundation piles, pile caps, and in-situ reinforced concrete foundations.
- Placing precast elements such as landings, stairs, bridge decks, and two lift shafts.
- Constructing plinths with balustrades, retaining walls, and an under-track crossing (UTX) to connect platforms.

Utility upgrades include the installation of ducting, lighting bollards, and manholes, alongside improved drainage systems. The project will conclude with platform paving, footpaths, and road surface build-up, ensuring improved accessibility and functionality for all passengers. With strong progress already achieved, GRS remains on track to deliver a high-quality, future-ready station, enhancing the travel experience for the Maynooth community and beyond.



# MACMILLAN CANCER SUPPORT



**Macmillan Cancer Support** is one of the largest British charities and provides specialist health care, information and financial support to people affected by cancer. It also looks at the social, emotional and practical impact cancer can have, and campaigns for better cancer care.

**Macmillan Cancer Support's** goal is to reach and improve the lives of everyone affected by cancer in the UK.

**Macmillan Cancer Support** supports local information and support centres, cancer support groups, benefits advisers and cancer support specialists, and can help with practical, medical, financial and emotional support.

**Macmillan** provides information about cancer through its Information Standard website, free printed and recorded materials, telephone support line and over 170 local cancer information and support services nationwide.

**Macmillan** hosts a series of annual fundraising events, which include running, golf, swimming, and cycling events. The most notable event is the **World's Biggest Coffee Morning**, which made £16.8 million in 2023, compared to £13.7 million in 2022.

**Macmillan** also hosts other large fundraisers, including Brave the Shave, which raises over £4,000,000 each year, as well as their Mighty Hikes series, which raised £12.3 million in 2023, compared to £11.2 million in 2022.

On the 27th September 2024, our Global Rail Construction team in Hatfield, held a **Macmillan Coffee Morning** in support of this amazing charity.

**Thank You To Our Amazing Baristas For Their Assistance,  
& To Everyone Who Contributed**



## Core Values



### Passionate

Committed in heart and mind to wholeheartedly embrace our core values and culture, without exception.



### People

Growing our organisation from within, promoting and empowering our people, inspiring them to be the best they can be.



### Professional

At all times we act with integrity, providing quality service, reliably and responsibly.



### Teamwork

Working collaboratively whilst supporting and respecting each other's views.



### Responsible

To consistently deliver quality, on time, safely and to budget whilst protecting our communities and the environment.





**Remembrance Day** (also known as **Poppy Day** owing to the tradition of wearing remembrance poppy) is a memorial day observed in Commonwealth member states since the end of the First World War to honour armed forces members who have died in the line of duty.



The day is also marked by war remembrances in several other non-Commonwealth countries.

In most countries, **Remembrance Day** is observed on 11 November to recall the end of First World War hostilities. Hostilities ended "at the 11th hour of the 11th day of the 11th month" of 1918, in accordance with the armistice signed by representatives of Germany and the Entente between 5:12 and 5:20 that morning. ("At the 11th hour" refers to the *passing* of the 11th hour, or 11:00 am.) The First World War formally ended with the signing of the Treaty of Versailles on 28 June 1919.

The tradition of **Remembrance Day** evolved out of Armistice Day. The initial Armistice Day was observed at Buckingham Palace, commencing with King George V hosting a "Banquet in Honour of the President of the French Republic" during the evening hours of 10 November 1919. The first official Armistice Day was subsequently held on the grounds of Buckingham Palace the following morning. During the Second World War, many countries changed the name of the holiday. Member states of the Commonwealth of Nations adopted **Remembrance Day**, while the US chose Veterans Day.

At the RSK Group, we paid tribute to our war heroes, who have given us the freedom we enjoy today, by observing a 2 minutes silence across all our sites.







# Supporting Vulnerable People in Hertfordshire



Some of our **Global Rail Construction (GRCL) Family** did it and made it through another HyH sleep-out! It was an unforgettable experience, despite the freezing night. There was an amazing turnout—around 200 people chose to give their time and, more importantly, to forego the warmth of their beds and the comfort of home to sleep out in support of this incredible charity and the vital work it does.

**Thank you to everyone who generously contributed to this cause.**

First and foremost, a heartfelt thank you to **GRCL's** Tony Nieli, Tuba Baker, Phil Churchill, and Joe Lomonaco for joining the Herts Young Homeless quiz in St. Albans on the 10th October. Whilst the Global Rail "Brains" didn't take home the win, they certainly had a great time.

It was a wonderful evening, and we managed to raise some much-needed funds for this fantastic charity.

Perhaps next year, the GRCL Dream Team will come out on top...



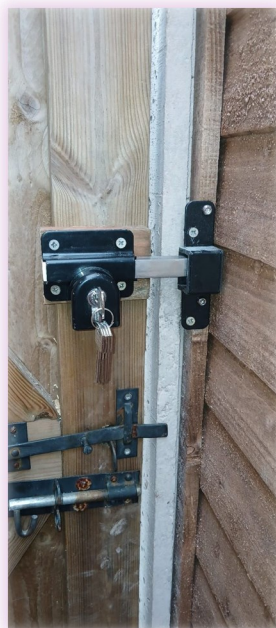


## Supporting Vulnerable People in Hertfordshire

**Global Rail Construction Limited (GRCL)** volunteers undertook the works of replacing the fencing and a gate lock at charity partner Herts Young Homeless' Future Roots House. We'd also like to thank Scott Parnell Ltd, METATRUNK UK LIMITED and Survey Express Services for supplying the materials and plant.

**Herts Young Homeless** were very grateful for these works and said the following:

***"We appreciate everything you do for us – having these works completed is not only a massive help to us but are also wonderful for the young people who live in the house".***



BEFORE

### Our Vision

Every young person has a safe home from which they can grow and thrive

### Our Mission

To break the cycle of youth homelessness in Hertfordshire through education, advice and support for young people and their families.



BEFORE





Lee Cresswell, GRCL Operative gave back to the community by assisting his colleague creating a mud kitchen for a local school.

***"A friend of mine asked if I could build a mud kitchen for the school she works in, as the year group she was working with didn't have one; the school's name is Silchester Church of England Primary School which is based in Hampshire.***

***In a previous project at Feltham, GRCL had repurposed timber, plywood, and pallets instead of discarding them in wood skips. Following the same approach, I reused leftover and offcut 6x2 timber from the roof joists of the pump room at Coventry Depot, along with 4x2 timbers that were originally used for various shutters on that project. I also used offcuts of plywood. The only items I needed to purchase were two metal bowls and some hooks to complete the mud kitchen".***

This was a fantastic gesture, and the school is incredibly grateful for Lee's hard work and the time he dedicated to the project. His contribution has made a positive impact on the children, providing them with a valuable new resource.



Our vision is that everyone arrives for work healthy and leaves for home safely, everyday.



# Congratulations

**Congratulations** to Alessandro Lombardelli (GRCL Quantity Surveyor) on achieving his Assessment of Professional Competence (APC) and becoming a fully qualified Chartered Surveyor!

After years of hard work, dedication, and perseverance, Alessandro has now earned the prestigious designation of Chartered Surveyor and is a proud Member of the Royal Institution of Chartered Surveyors (MRICS).

Alessandro shared his thoughts on this important milestone:

***"I am so delighted and proud to now be a member of RICS. The whole process has been an incredible experience, and I would like to extend my sincere thanks to Global Rail Construction for their invaluable support and mentoring scheme throughout my journey."***

Emma Russell, GRCL Commercial Manager added the following

***"We couldn't be prouder of Alessandro's achievement. His dedication and commitment to his profession serves as an inspiration to all of us here."***

Congratulations once again, Alessandro – this is only the beginning of what's sure to be a remarkable career.



Nick Turner  
GRCL Head of Rail Systems

On the 20th November 2024 at the prestigious House of Lords in London, **Global Rail Construction Limited**, alongside its valued clients AtkinsRéalis and Network Rail, received the Institute for Collaborative Working (ICW) Award for **Innovation and Transformation**. This recognition was for our joint efforts on the Feltham to Wokingham Resignalling Programme.

We are honoured to receive this award, which is testament to the exceptional collaboration and dedication of the entire team throughout the project lifecycle.

A huge thank you to everyone who contributed to this success - your hard work and innovation have truly made a difference!

This award follows the recent National Rail Award received by the team for 'Outstanding Teamwork'.

***Our USP is without doubt our people and our long-term strategy will ensure we continue to invest in and develop our people to enable us to deliver our customers expectations, in an efficient and consistent manner***

# CELEBRATION



We are thrilled to share some wonderful news from the GRSL family!

Damien Galligan, our Senior Commercial Manager, and his wife Caroline joyfully welcomed their beautiful baby girl, Eva Sarah, into the world in early September.

Both Mom and baby are doing well, and Damien is glowing with pride in his new role as a Dad.

Join us in congratulating Damien and Caroline on this heartwarming addition to their family.

**Welcome to the world, Eva Sarah**



## HAPPY BIRTHDAY

A very Happy **50th** Birthday to Nicolae Costin  
(GRCL Operative)

who celebrated his birthday in September.

**We all hope you had a wonderful time celebrating this milestone birthday**



## HAPPY BIRTHDAY

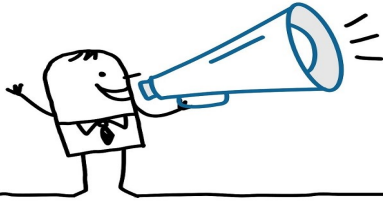
A very Happy **50th** Birthday to Florin Rebosapca  
(GRCL Operative)

who celebrated his birthday in November.

**We all hope you had a wonderful time celebrating this milestone birthday**



We love celebrating the milestones and achievements of our team members, from birthdays and anniversaries to personal and professional accomplishments. If you have something special to share, let us know—we'd be delighted to include it in our next newsletter.



***Welcome To The Global Family...***



**Sinead Sterling  
Health & Safety Advisor**



**Alan Kirrage  
Project Manager**



**Janarthanan Rajadurai  
Project Engineer**



**Jonathan Gabbott  
Project Manager / CRE**

***Our long-term strategy ensures we can continue to invest in and develop our people to enable us to deliver our customers expectations in an efficient and consistent manner***





Part of the RSK Group of companies

## A Leading Provider Of Turnkey Solutions For The Rail Industry



Railway  
Construction



Civil  
Engineering



Telecomms



Multi-Utilities



Power  
Networks



General  
Construction



Design and  
Consultancy

Combining technical and innovative excellence with a  
real passion for detail and safe delivery of projects

[www.theglobalinfrastructuregroup.com](http://www.theglobalinfrastructuregroup.com)