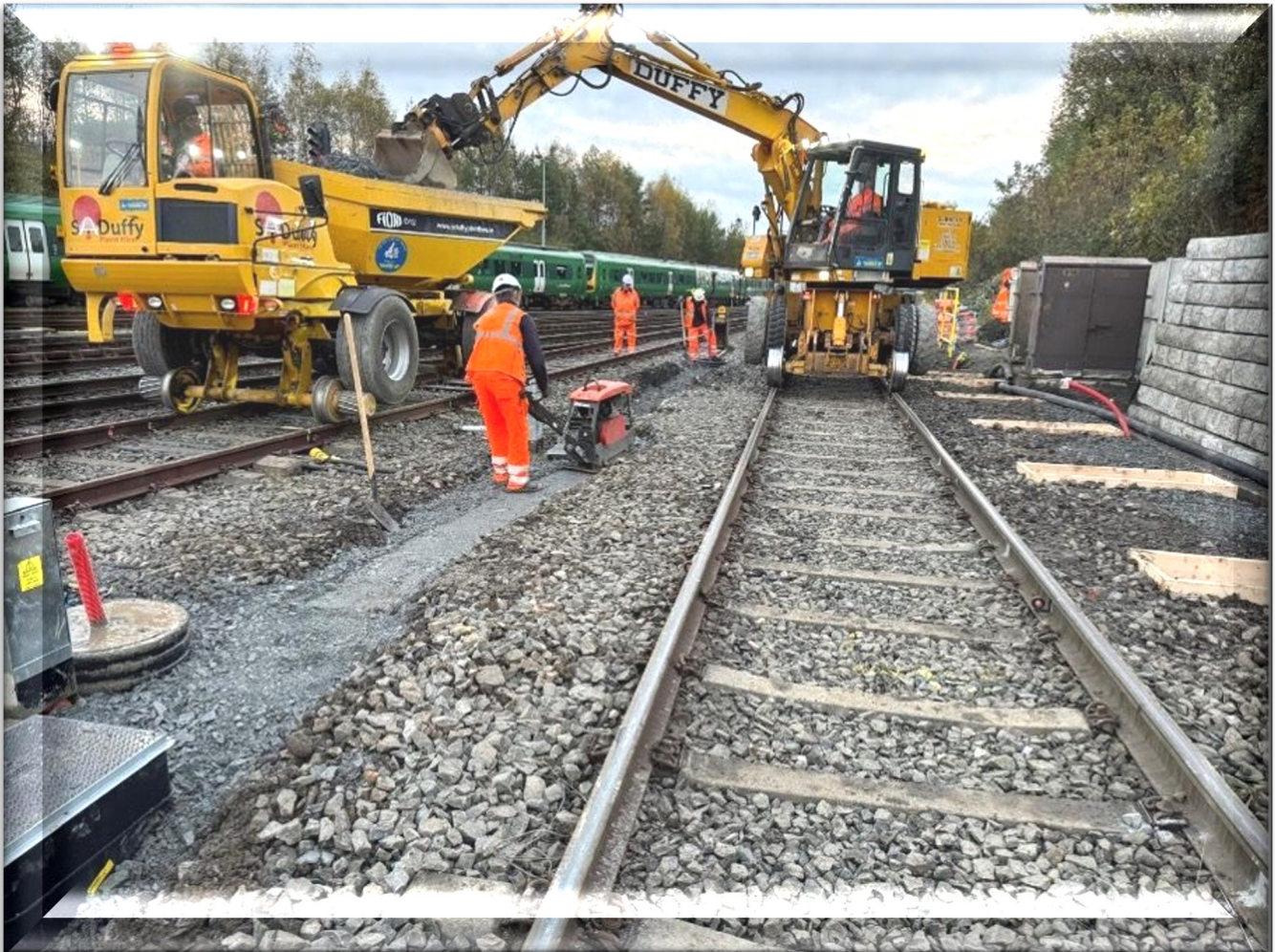




Part of the RSK Group of companies

Issue 42 2025

GLOBAL NEWS



In This Edition.....

- * Project News**
- * New Starters**
- * Celebrations**
- * A Day In The Life...**



globalnews@grcl.co.uk

Foreword

Welcome to another edition of the Global News Magazine, and I am sure you will all agree that this publication provides valuable updates on the Global family and is a fantastic mechanism by which both organisations can keep up to date with what is going on across both businesses that are part of the wider RSK Group.

It is clear when reading the updates from across the group in this edition that our project teams are involved in the delivery of some truly exceptional projects. All being delivered to the highest of standards across various parts of the UK and Ireland in what can only be described as challenging environments.

This is a testimony to our behaviours, experience and in particular, our people who support and continue to enhance our service delivery across the two businesses. Whilst enjoying our various successes there is always a need for continuous improvement of our businesses and our people so that we will always be considered for key opportunities and continue to be the partner of choice to our existing and prospective clients.

As a group we believe that it is vital to continue to invest in and develop our staff to enable us to deliver tomorrows expectations today. Both GRCL in the UK and GRSL in Ireland seek to empower our people to grow, develop and achieve their full potential whilst providing the platform and support to enable this growth potential. We take our responsibilities seriously and have always operated a policy that incorporates a programme of continuous improvement and on-going staff education and development.

I am pleased to see that our Apprenticeship, graduate recruitment and on-going staff education programmes are going from strength to strength and this investment will continue as we seek to develop the next group of young professionals into these businesses. These programmes really are the lifeblood of any business and their importance cannot be overstated to the future of both organisations. It is very satisfying to see how a number of our staff that are going through or have already been through these schemes are now an integral and influential part of our Project Delivery Teams across both companies.

We look forward to working alongside the next generation of future professionals both in the UK and Ireland in the coming months/years and am sure that we are all able to see the benefit of the investments being made in the area of training and development.

Of course, none of the above and the success that the Company has experienced to date could be fully appreciated without the full support, hard work and commitment of all our staff, supply chain and partners who often face difficult challenges, working through adverse weather conditions whilst often sacrificing time with their families to ensure our business objectives are delivered professionally, safely and in a consistent manner.

These challenges are particularly heightened during major commissioning and blockades, both of which we have experienced recently and it is testament to our project delivery teams level of commitment to our core principles and culture, enhanced by working together and with others to achieve our defined objectives that we have been able to deliver these safely, to programme and to the highest quality. Well done to all involved in the planning and delivery of these major achievements.

As both businesses are integrated into the RSK Group, we should not forget our history and in particular how our wider teams have always executed our objectives and responsibilities in such a positive, pro-active and inclusive way. We should look to embrace the onboarding of both GRCL and GRSL into the RSK Group and utilise the extensive resources of our new owners to help us grow and develop the service we are able to provide to our clients and the working environments we are able to provide to our staff and delivery teams.

Our responsibilities both within the political landscape and the environment in which we live are ever changing and, as we have seen recently, the political landscape can change in a heartbeat. This foreword is not long enough to cover the politics so will focus on the environment and as we plan for a future where the current projections forecast warmer and wetter winters coupled with hotter and drier summers. We must all consider how we can aid the fight against how our actions and behaviours impact global warming.



As we are increasingly being engaged by our clients earlier in project lifecycles, we are more able to challenge conventional design practices and to help find more environmentally friendly design solutions, which will actively reduce the level of carbon emissions for our projects.

However, we should also be mindful of our collective responsibility to make the conservation of energy a daily part of our routine and consumer choices. As the world continues to experience the terrible consequences of the warming effect, with the recent devastating wildfires in California and flooding across various parts of the world and in the UK, we are never far from a timely reminder of why all our decisions in this regard are so vital. As a business we must constantly challenge and review our processes and working practices in order to reduce our impact on climate change and this is more important now than it has ever been.

We are now going in to a particularly busy period across the group, both in terms of tendering opportunities and on secured projects and this is where historically, we are able to excel as a business as we work collaboratively as part of a greater team in a responsible, passionate and professional manner to collectively deliver a first class service to our clients.

As we work within the RSK Group, we are now able to tender for much larger projects and it was a pleasure to recently work alongside RSK Environment and 1stinRail on the IMC3 Framework tender for the 5 year maintenance contract for the Windrush Line in London. In the UK, we have also started delivering M&E installation works on behalf of the RSK business MWH in the Water industry. The works at Sedgeberrow STW are progressing well and we look forward to developing this part of the business delivery capability in the coming months.

We are fortunate to work on behalf of a number of clients with a truly global reach and we are seeing more opportunities where GRCL and GRSL may be able to work collectively on projects in Ireland for our clients.

Thanks to you all for your commitment, determination and dedication across both businesses and as a result, we are going from strength to strength at a time when we are looking to broaden our discipline delivery capability.

Hope you enjoy the read.



Jim Cuell
Commercial Director



Cambridge Resignalling Project – Key Milestones Delivered!

Our **Global Rail Construction (GRCL)** team is proud to share the successful completion of significant civils works carried out as part of the Cambridge Resignalling Project on behalf of our valued client **Alstom**.

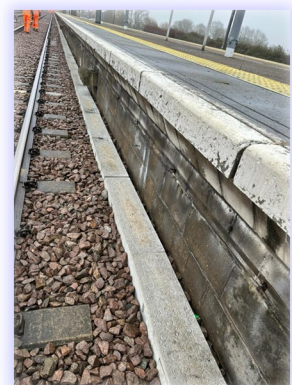
Here's a quick summary of the progress achieved:

- ◆ Dernford: LOD base and hardstand completed.
- ◆ CA186/190 Gantry boom installed.

Christmas Blockade Milestones:

- ◆ CA156 cast-in-situ signal base laydown finalised.
- ◆ CA180 SPT walkway completed.
- ◆ Signal foundations installed at CA680, CA682, and CA701.
- ◆ Signal piles installed at CA171 and CA195.
- ◆ 270m of C17 platform trough route installed at Ely Station.
- ◆ CA177 signal dropper installed on the cantilever.
- ◆ CA193 cast-in-situ signal base completed.
- ◆ CA180 signal pile and laydown area finalised.

Sending huge thanks to everyone involved in delivering these crucial upgrades that help pave the way for a more efficient and reliable railway network.





Core Values



Passionate

Committed in heart and mind to wholeheartedly embrace our core values and culture, without exception.



People

Growing our organisation from within, promoting and empowering our people, inspiring them to be the best they can be.



Professional

At all times we act with integrity, providing quality service, reliably and responsibly.



Teamwork

Working collaboratively whilst supporting and respecting each other's views.



Responsible

To consistently deliver quality, on time, safely and to budget whilst protecting our communities and the environment.



Global Rail Construction Limited (GRCL)

is delighted to announce the award of a Mechanical & Electrical (M&E) Design & Build sub-contract for Sedgeberrow Sewage Treatment Works, on behalf of MWH Treatment Limited, a sister company from within the RSK Group.

This reflects an exciting diversification from the highly regulated rail industry, whereby GRCL is able to use and transfer its extensive Electrical and Mechanical design and engineering experience in rail, to support water management and treatment.

Our UK teams' scope of work includes:

- ◆ Full system electrical design
- ◆ Installation of cable containment
- ◆ LV sub-main installation
- ◆ Telemetry cable installation
- ◆ Termination of all final circuits
- ◆ NICEIC testing & certification and handover for final system testing.

This latest success highlights the symbiotic expertise within RSK Group; enabling an exciting collaboration in order to deliver a bespoke turnkey solution for this project, and we hope further strengthens MWH Treatment's offering for the up-and-coming Asset Management Period 8 (AMP8).

Mechanical and electrical services are central to the majority of construction and civil engineering projects. The increasing reliance on service installations, in all their forms, accounts for an increasing proportion of a project's out turn costs. Projects, therefore, need to take considerable care in the delivery of these works.

GRCL's track record working on M&E related projects is significant, allowing us to design and deliver customised solutions based on a practical understanding of the project requirements. Services provided by the company are constantly upgraded through training and development and are consistently delivered to the very highest specification.



Our vision is that everyone arrives for work healthy and leaves for home safely, everyday.

Project Update: North Downs Lines (NDL) – Level Crossing Renewals

Our civils team has been making impressive progress on their North Downs Lines (NDL) project, focusing on four key Level Crossing Renewals: Brook, Burrows Lane, Tangley, and Chilworth.

Key achievements so far include:

- ◆ Installation of new signal foundations, hardstandings, and laydown areas.
- ◆ Construction of SPT walkways, retaining walls, and location suite hardstandings.
- ◆ Upgrades to fencing, REB and DNO bases, and cable routes.

A huge thank you to our dedicated team for their exceptional quality of work and commitment in maintaining the highest safety standards. **Your hard work is truly appreciated.** Seamless collaboration with our client, **AtkinsRéalis**, and third parties has been key to our success, ensuring smooth coordination every step of the way.

Let's keep up the fantastic momentum, team!



A DAY IN THE LIFE OF

In this issue, we meet Aisling Jackson, Payroll & Accounts Administrator for Global Rail Services

What is your current job?

Payroll and Accounts Administrator

Why did you choose this profession?

My career didn't start in finance—I spent over a decade in retail. But after having my daughter, I knew I wanted a change. That's when I decided to retrain in payroll, and from there, I continued into accounting. It was a big shift, but one I'm incredibly proud of.

What is your typical day at your job?

Every day in my role as a Payroll and Accounts Administrator brings something new. While the majority of my work revolves around payroll processing and invoicing, no two days are ever quite the same. Whether it's ensuring employees are paid on time, handling accounts, or problem-solving, my job keeps me engaged.

What are your most favourite things about the job?

Without a doubt, the best part of my job is the people I work with. A great team makes all the difference, and I'm lucky to be surrounded by supportive colleagues.

What are you passionate about?

Outside of work, I have a deep passion for music and nutrition. I also love spending time with my family and friends, whenever I get the chance.

What inspires you the most?

My daughter is my biggest inspiration, and I take pride in both her and the qualifications I've worked hard to achieve.

What is your favourite music and movies?

I don't have one specific favourite genre—I enjoy a bit of everything. When it comes to movies, though, High Fidelity is at the top of my list.

How to spend free time?

I try and spend it with family and friends.

Hobbies and interests?

Recently, I've been learning to play the guitar—it's a challenge, but a fun one! I also enjoy cooking and experimenting with new recipes.

What is your favourite sport?

Rugby is my favourite to watch, although I'll happily tune into almost any sport.



THANK YOU AISLING, FOR YOUR TIME



Our **Global Rail Services** team is completing final works on the Dart+ BEMU Stabling Road Project at Drogheda Train Station. Following the recently reported structural improvements prior to Christmas, these final project enhancements include trackside accessibility works - the construction of drivers walkways on both sides of the tracks, complemented by two track crossings and three structural steel driver platforms with in-situ foundations. Bollards with insitu foundations, and associated ducting are also in, with final connections and terminations to the cameras and lighting just to complete.

The project is testament to our teams' fully managed delivery service and highlight Global Rail Services' skills in delivering high quality enhancements for the Iarnród Éireann Irish Rail network, the passengers and the communities.





Rosslare Harbour Emergency Works

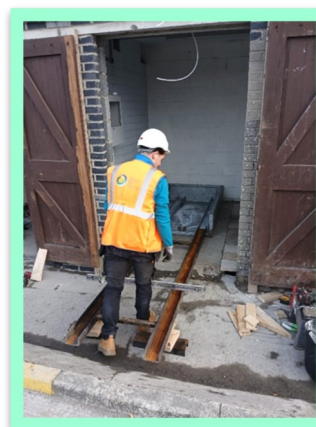
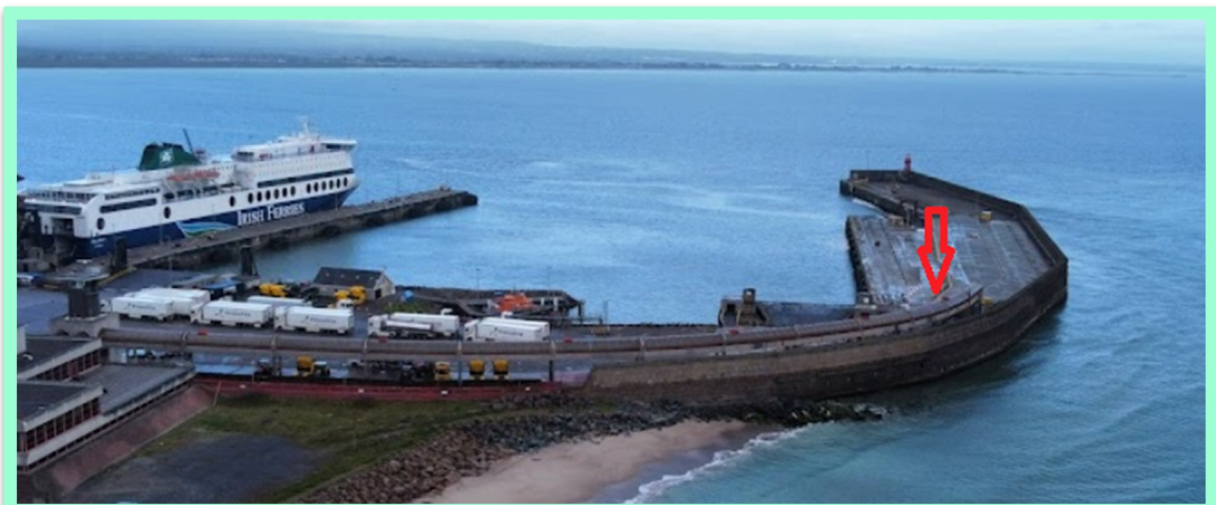
Following fire damage at Berth 3 MV Transformer Room in Rosslare Harbour, our **Global Rail Services** team successfully completed critical substation and medium voltage switch room upgrades to restore power and ensure operational continuity.

Project Scope & Achievements:

- ◆ Procurement, approval, and installation of a new 250KVA Medium Voltage Transformer and switchgear in the existing substation
- ◆ Installation of a new Low Voltage (LV) distribution board and full substation rewire
- ◆ Seamless coordination with Harbour Facilities (Irish Rail) and ESB to maintain essential services using backup generators throughout the upgrade

Thanks to the team's dedication and collaboration, the project was completed on schedule, with power fully restored to the site in early January.

**A Huge Thank You To Everyone Involved
In Delivering This Essential Infrastructure Upgrade**





Global
Rail
Services



Iarnród Éireann
Irish Rail



Delivery & Installation
of
Low Voltage
Distribution Board



Transformer Connected



MV Switch Installed & Operating



At the very end of last year, our **Global Rail Services** team was proudly undertaking a Project Supervisor Construction Stage (PSCS) role for Iarnród Éireann on the Dart+ BEMU Stabling Road Project at Drogheda Train Station.

Global Rail Services has made significant progress on this project since mobilisation in October 2024. The project is critical to the development of Irish RAILS electrified rail services and entails initial site compound set-up in the public car park with welfare units and site cabins followed by site clearing and key structural unit installation.

Key structural elements include the installation of an 80m EVO GEO retaining wall with precast foundations, and a 10m King Post retaining wall, along with embankment re-profiling to improve stability. The EVO GEO wall was a contractor designed solution in place of the original King Post wall design. The solution was derived in conjunction with Evolution Geotechnical Engineering, Irish Rail & Global Rail Services and delivered significant cost and time savings to the project. To enhance trackside accessibility, driver walkways are constructed on both sides of the tracks, complemented by two track crossings and three structural steel driver platforms with in-situ foundations. Additional works include installing two under-track crossings (UTXs), 43No lighting bollards with insitu foundations, and associated ducting. Utility upgrades involve the construction of 25No Stakkabox manholes and mini pillars, and an external distribution pillar with in-situ foundations, while improved site access will be secured with a newly installed gate.

These works highlight Global Rail Services' continuing collaboration with Irish Rail to enhance the rail network.





As 2025 commences, **Global Rail Services** is proud to provide an update on a major infrastructure project, highlighting its team's technical expertise and commitment to enhancing Ireland's transport network. Currently, our civil engineering experts are delivering the PSCS role with Iarnród Éireann for an Accessibility Project at Maynooth Train Station.

Since mobilisation in October 2024, the team has hit the ground running, collaborating with key stakeholders to implement a robust pedestrian management plan, which, has enabled the successful establishment of a site compound, 2.5m high site hoarding, and temporary car park and platform enabling work modifications. These early milestones have set a strong foundation for our Irish team to deliver the project on time and to spec this year.

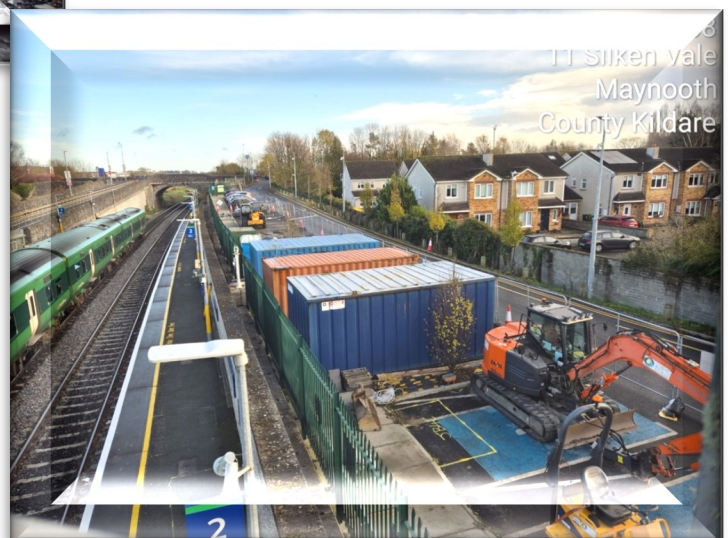
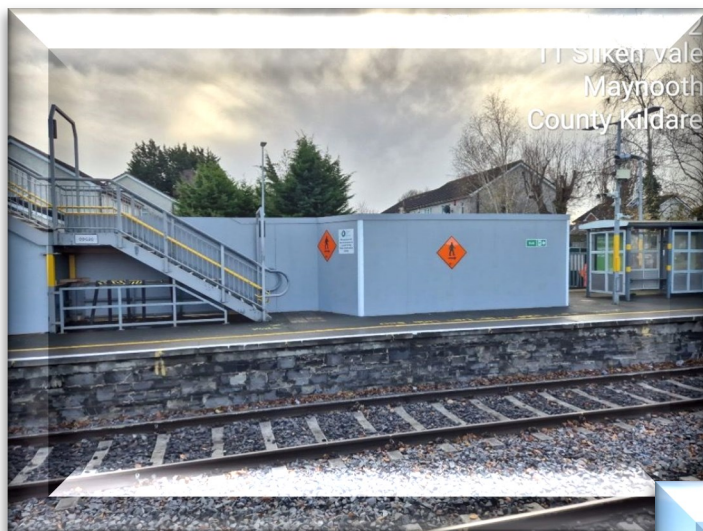
The project scope includes critical structural works such as the installation of foundation piles, pile caps, and in-situ reinforced concrete foundations.

Precast units will also be installed, including landings, stairs, bridge decks, and two lift shafts.

Additional structural elements include plinths with balustrades and retaining walls.

Further works involve utility installations, such as ducting, lighting bollards, and manholes inclusive of an under-track crossing (UTX) will be drilled beneath the track to connect one platform to the other, alongside drainage systems.

The project will conclude, with platform pavement, footpath, and road surface build-up, and with a strong start already in place, Global Rail Services is on track to deliver a high-quality result, ensuring a more accessible and efficient travel experience for passengers.





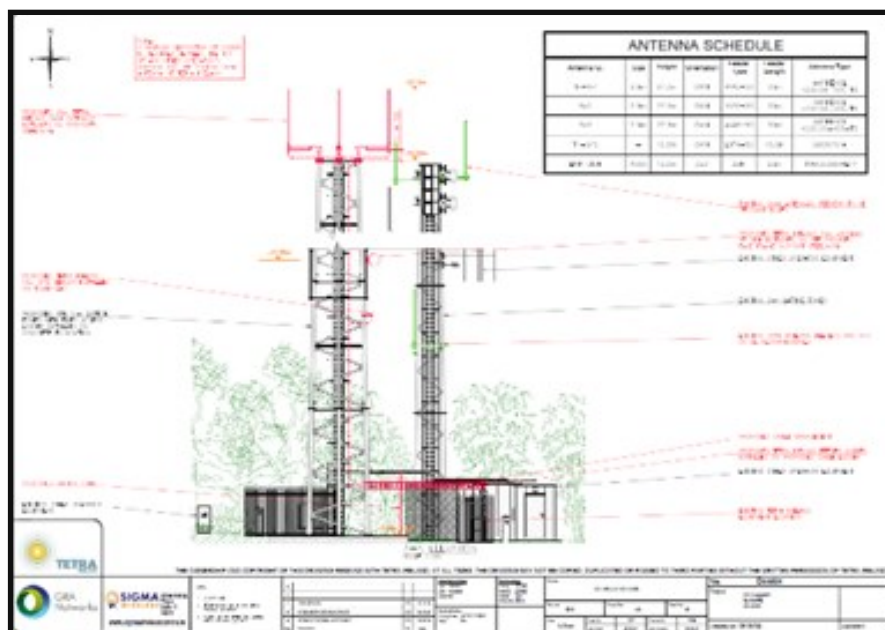
Sigma Wireless Communications is an Irish company and has been providing Mission Critical Solutions for over 30 Years. They bring their extensive systems integration, network design, customer service and engineering experience to every project undertaken. They draw on their key partnerships with many Global Technology Solution Providers enabling delivery of products and turnkey solutions to both the Domestic and International market place.

Sigma Wireless Site Builds

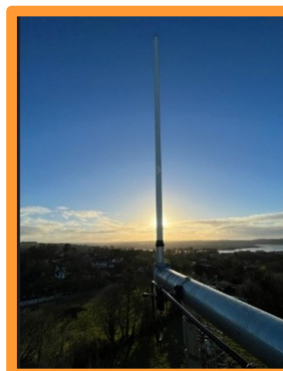
GRA Networks have been engaged by Sigma Wireless to install critical communication systems for their clients throughout Ireland. This is a design and build contract encompassing internal and external solutions for multiple stakeholders across the emergency services.

System Design External Systems

The design allows for key components such as cable management, cable routes, active equipment locations, antennae steel supports bracketry including GPS.



Key Components External Systems



The external system is typically mounted on existing structures - such as communication towers, mobile masts, and rooftops - to ensure comprehensive coverage.



The internal system comprises a base station connected to an external antenna, which in turn is linked via coaxial cable to several ceiling-mounted antennas. This configuration ensures uninterrupted connectivity in buildings with poor coverage and is ideal for environments such as shopping centres, large building complexes, railway stations, and underground car parks.



At Dundrum Shopping Centre in Co. Dublin, the internal system was deployed to enhance coverage within evacuation routes and other key areas throughout the Centre. The network was installed across multiple levels, with strategically positioned antennae ensuring complete and reliable coverage.

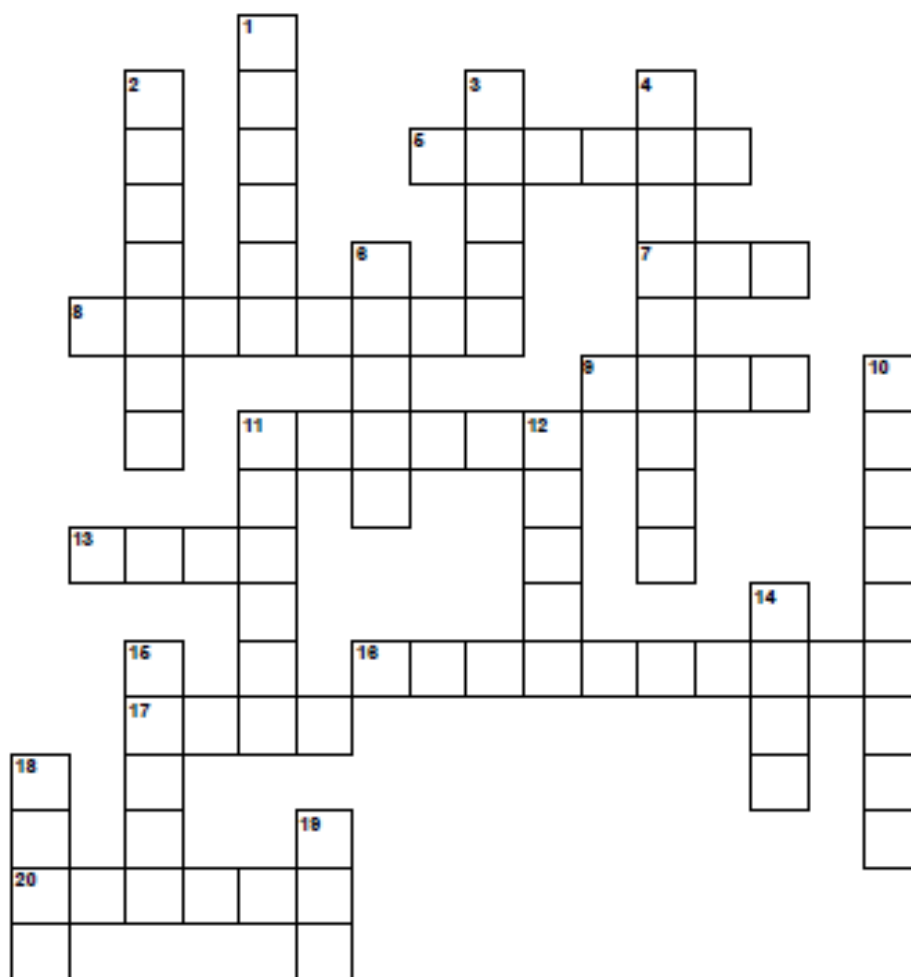


Typical Layout and Location



just for fun

GROUNDHOG DAY



GROUNDHOG DAY

ACROSS

- 5 Tunnel dug by certain animals
 7 Period between sunrise and sunset
 8 Second month of calendar year
 9 Punxsutawney _____
 11 Occur, happen or a outcome
 13 Lacking heat
 16 Act of foretelling
 17 Story of traditional knowledge of a society
 20 Come out of a surrounding environment

DOWN

- 1 Season of the year between autumn or spring
 2 Act of withdrawing from a place
 3 Having much sunlight
 4 Groundhog
 6 Rough or unpleasant
 10 Remain dormant over winter in a den
 11 Small four-footed mammal with sharp teeth
 12 Mild or temperate
 14 Anything that indicates the existence of a fact
 15 Visual representation
 18 Occurrence believed to be supernatural
 19 Place of concealment and shelter



Supporting Vulnerable People in Hertfordshire

Supporting Herts Young Homeless: Changing Lives, One Step at a Time

At **Global Rail Construction**, we are passionate about making a difference in the communities where we live and work. That's why we are proud to support **Herts Young Homeless (hyh)**—a charity dedicated to preventing youth homelessness and providing vital support to young people in Hertfordshire.

Why hyh's Work Matters

Since 1998, hyh has been a lifeline for vulnerable young people, helping them build stable, independent futures. Their dedicated team of experts has directly supported over 5,400 young people in the last five years alone. But the challenge is far from over—over 136,000 young people across the UK are currently facing homelessness.

Homelessness doesn't just mean living on the streets. Many young people find themselves in unstable or unsafe housing situations, sofa-surfing, or at risk of exploitation. That's where hyh steps in, offering a range of services that provide young people with the support, guidance, and skills they need to move forward in life.

How hyh Makes a Difference

Working closely with Herts County Council, local district councils, and partner organisations, hyh takes a proactive approach to tackling homelessness by:

- **Preventing homelessness** before it happens through education, mediation, and early intervention.
- **Providing crisis support** for young people in immediate need of safe accommodation and guidance.
- **Supporting independent living**, helping young people develop the skills they need to sustain tenancies and build a future.

By focusing on long-term solutions, hyh ensures that young people don't just find temporary shelter but have the tools and confidence to create brighter, more secure futures.

How You Can Help

At **Global Rail Construction**, we believe that everyone deserves a safe place to call home. We are committed to supporting hyh in their mission, but we can't do it alone. You can make a difference by getting involved in one of hyh's upcoming fundraising events!

Upcoming Fundraising Challenges

If you're looking for a way to push your limits, have fun, and support a great cause, why not take part in one of these exciting events?

- ♦ **London Landmarks Half Marathon** – Sunday, 6th April 2025
- ♦ **St Albans Half Marathon** – Sunday, 8th June 2025
- ♦ **Wingwalking** – Take to the skies for a thrilling challenge!
- ♦ **Skydiving** – Experience an adrenaline rush while raising vital funds.
- ♦ **Tough Mudder** – Tackle an obstacle course like no other!
- ♦ **Track Day** – A high-speed experience for motorsport lovers.
- ♦ **Host Your Own Fundraiser** – Whether it's a bake sale, quiz night, or sponsored challenge, every effort helps!

Every pound raised goes directly towards supporting young people in crisis, helping them find stability, security, and hope for the future.

Join Us in Making a Difference

For more information on how to get involved, visit <https://www.hyh.org.uk/>

Let's work together to create a future where no young person has to face homelessness alone.



The Global Rail Construction Ltd (GRCL) Family enjoyed **Christmas Jumper Day** on the 12th December 2024. We raised an amazing £155.00!! We enjoyed sweets and treats throughout the day. The first **Christmas Jumper Day** was on 14 December 2012. Since then, millions of people have put on their jazziest

jumpers for one day in December. **Christmas Jumper Day** has raised over £30 million for children in the UK and around the world since it began in 2012!

Christmas Jumper Day was all about having fun while making a real difference in children's lives. By donning our favorite festive knitwear and donating, we helped provide essential resources such as food, healthcare, and education to children who need it most.

How We Got Involved

- ♦ **Wore Our Christmas Jumpers** – We dug out our brightest, silliest, and most festive jumpers and wore them proudly! It was fantastic to see the creativity and festive spirit shine through in everyone's outfits.
- ♦ **Made Donations** – Every contribution helped provide a better future for children worldwide. Whether big or small, each donation contributed to improving the lives of vulnerable children in need.
- ♦ **Spread the Word** – Friends, family, and colleagues joined in and supported the cause. Many took the opportunity to educate others about the importance of this initiative and how it positively impacts children's lives.
- ♦ **Shared Our Festive Looks** – Many of us snapped pictures in our jumpers and tagged our social media to show our support! The enthusiasm and participation on social platforms helped raise even more awareness and encourage others to get involved.

The Impact We Made

Thanks to your generosity, **Save the Children** can continue their vital work in helping children around the world. With access to education, healthcare, and life-saving support, more children will now have a chance at a brighter future. Your efforts have truly made a difference, and we couldn't be more grateful.

The warmth and unity displayed during this event was a true reflection of the GRCL family spirit. Seeing everyone come together for such a meaningful cause reminds us of the power of collective action and how small efforts can lead to big changes.

Once again, a heartfelt thank you to everyone who participated and contributed. Your kindness and generosity helped make **Christmas Jumper Day** an incredible success, and we look forward to taking part again this December!





Congratulations



Congratulations to Sam Eva and Jonathan Gabbott!

Well done to Sam Eva (GRCL Assistant Estimator) and Jonathan Gabbott (GRCL Project Manager) for successfully completing

the C301 - Forecast Budget & Cashflow course. This achievement demonstrates their in-depth understanding of integrating estimating and planning to create accurate forecast budgets and detailed cash flow analyses. The course also covered updating programs to generate valuation quantities, which are essential for producing to-date and remaining forecast budgets. Your hard work and commitment to professional development are truly commendable.

Congratulations to Debby Cambridge and Brenda Lombard!

We are delighted to announce that Debby Cambridge (GRCL HSQE Advisor) and Brenda Lombard (GRCL HSQE Advisor) have successfully completed their NVQ Level 3 and Level 6 qualifications, respectively, in occupational health and safety. This significant achievement reflects their dedication to continuous learning and their commitment to maintaining high safety standards across our projects.

Henry Bonuah, GRCL QSE Manager, shared his thoughts on their accomplishment: ***"Both Debby and Brenda took these courses over a period of time, which required a lot of learning and numerous submissions to demonstrate their understanding across various modules. I believe that the knowledge they have gained positions them even better to support our GRCL projects in their respective roles and to represent the organisation at client engagements as HSQE Advisors."***

Their hard work and professional development are truly commendable. Please join us in congratulating Debby and Brenda for their outstanding efforts and contributions to our team.



Our vision is that everyone arrives for work healthy and leaves for home safely, everyday.

Congratulations



Celebrating 10 Years of Excellence!

We honour a truly remarkable milestone—Henry Bonuah, QSE Manager, has completed 10 incredible years with Global Rail Construction Ltd

Marco Lombardelli, Managing Director, stated ***“From day one, Henry has exemplified dedication, innovation, and a passion for excellence. Over the past decade, his contributions have not only driven our team's success but have also inspired those around them to aim higher and achieve more.”***

Thank you, Henry, for being a cornerstone of our success story. We're excited to see what the future holds as you continue to shape our journey ahead.

Here's to celebrating you and all that you've accomplished!



A huge congratulations to Bill Walker (GRCL Construction Manager) and his partner Roxanne on the birth of their beautiful baby, Billie Lila!

This exciting new chapter brings with it endless love, joy, and cherished moments, and we couldn't be happier for your growing family.

Welcoming a little one into the world is such a special time, filled with firsts, cuddles, and sweet memories in the making. From all of us at GRCL, we send our warmest wishes to Bill, Roxanne, baby Billie and family as they embark on this wonderful journey together.

Enjoy every precious moment

Our USP is without doubt our people and our long-term strategy will ensure we continue to invest in and develop our people to enable us to deliver our customers expectations, in an efficient and consistent manner

CELEBRATION



HAPPY BIRTHDAY

A very Happy **40th** Birthday to Barry Smith
(GRCL Project Manager)

who celebrated his birthday in December.



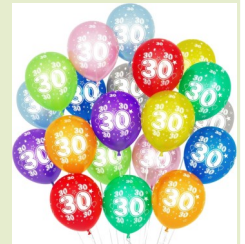
We all hope you had a wonderful time celebrating this milestone birthday



HAPPY BIRTHDAY

A very Happy **30th** Birthday to James Sykes
(GRCL Project Manager)

who celebrated his birthday in February.



We all hope you had a wonderful time celebrating this milestone birthday



HAPPY BIRTHDAY

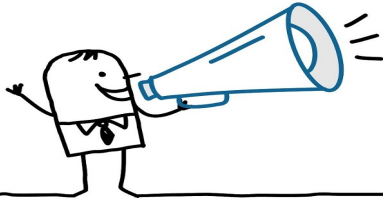
A very Happy **40th** Birthday to Liam Perry
(GRCL Resource Manager)

who celebrated his birthday in January.



We all hope you had a wonderful time celebrating this milestone birthday

We love celebrating the milestones and achievements of our team members, from birthdays and anniversaries to personal and professional accomplishments. If you have something special to share, let us know—we'd be delighted to include it in our next newsletter.



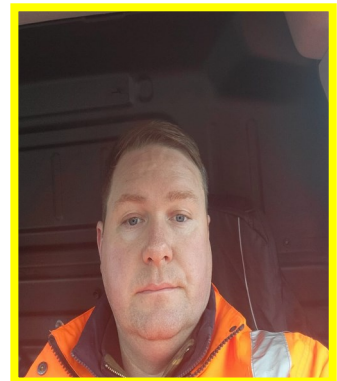
Welcome To The Global Family...



**Thracha D'Melo
Office Administrator**



**Nicholas Ismatullaev
Quantity Surveyor**



**James Guy
Construction Manager**

Our long-term strategy ensures we can continue to invest in and develop our people to enable us to deliver our customers expectations in an efficient and consistent manner



Part of the RSK Group of companies

A Leading Provider Of Turnkey Solutions For The Rail Industry



Railway
Construction



Civil
Engineering



Telecomms



Multi-Utilities



Power
Networks



General
Construction



Design and
Consultancy

Combining technical and innovative excellence with a
real passion for detail and safe delivery of projects

www.theglobalinfrastructuregroup.com