



Part of the RSK Group of companies

Issue 43 2025

GLOBAL NEWS



In This Edition.....

- * **Project News**
- * **Celebrations**
- * **Charity Funday**
- * **Promotions...**



globalnews@grcl.co.uk

Foreword

Welcome to the 43rd Edition of the Global News Magazine

As we reflect on the first half of the year at Global Rail Construction Ltd (GRCL) and Global Rail Services (GRS), we do so with immense pride in our accomplishments and unwavering optimism for the future. Our journey through 2025 has been marked by significant milestones, strategic growth through diversifying our client base, and a steadfast commitment to delivering excellence across the UK's and Ireland's rail infrastructure.



In the UK, one of our most notable achievements has been the successful installation and commissioning of A2SM Stage 2 works. These complex, multi-disciplinary packages included signalling installations, civil and structural engineering, and E&P works.

We also continue to celebrate the successful delivery of the Cambridge Area Resignalling GRIP 6-8 Civils Works, a long-term programme that showcases our expertise in managing large-scale civil engineering projects. This contract, awarded by Alstom, reinforced our reputation as a trusted partner capable of executing high-stakes infrastructure upgrades with precision and professionalism.

Global Rail Services continues to steam ahead in Ireland, serving the infrastructure growth with continued successful delivery of Maynooth Station Accessibility works and a framework delivering multiple telecoms sites across the country on behalf of ESB Telecoms, more details of these and other projects across both GRCL and GRS can be read within this edition.

Each of these projects reflects our commitment to safety, innovation, and sustainability—values that are deeply embedded in our company's culture.

Our ability to deliver these projects efficiently and safely, in collaboration with our Tier 1 partners, TfL, Network Rail, Iarnród Éireann (Irish Rail) and ESB Telecoms, is a testament to the strength of our in-house capabilities and the dedication of our teams and confirms that we are the delivery partner of choice as the CP7 control period spend gets underway.

Looking ahead, we are excited by the strength of our forward work bank. With a robust pipeline of opportunities across signalling, civil engineering, and E&P/M&E, we are well-positioned to support UK and Ireland's evolving transportation needs. Our strategic focus remains on expanding our multi-disciplinary service offering, diversifying our client base, investing in our people, and embracing digital transformation to enhance project delivery.

We are also proud to be contributing to the broader vision of a greener, more connected future. As the rail industry continues to play a pivotal role in the UK and Ireland's net-zero ambitions, GRCL and GRS are committed to integrating sustainable practices into every aspect of our operations—from reducing carbon emissions on-site to promoting environmentally responsible design solutions.

None of this would be possible without the dedication of our talented workforce, the trust of our clients, and the strength of our supply chain partnerships.

As we move forward, we remain focused on fostering a culture of collaboration, innovation, and continuous improvement.

Thank you for being part of our journey. We look forward to another period of delivering excellence, building lasting relationships, and making a positive difference in the communities we serve.

Hope you enjoy the read.

Nick Turner
Projects Director



Passionate

Committed in heart and mind to whole-heartedly embrace our core values and culture, without exception.



People

Growing our organisation from within, promoting and empowering our people, inspiring them to be the best they can be.



Professional

At all times we act with integrity, providing quality service, reliably and responsibly.



Teamwork

Working collaboratively whilst supporting and respecting each other's views.



Responsible

To consistently deliver quality, on time, safely and to budget whilst protecting our communities and the environment.





Global
Rail
Construction



MWH
TREATMENT

RSK

Global Rail Construction Limited part of the RSK Group (GRCL) M&E teams are working hard at Sedgeberrow, Evesham on behalf of our valued client and RSK Group sister company **MWH Treatment**, installing containment and mains power in readiness for final circuits and instrumentation commissioning.

We are in the final stages of testing and commissioning at Sedgeberrow STW, marking their very first project in the UK Wastewater sector.

The scope includes the design, installation, testing and commissioning of all EICA cables to and from the new DNO, MCC, instrumentation and equipment.

This significant milestone highlights the strength of UK teams' transferable skills and commitment to delivering high-quality results across sectors including rail and transportation and now water.

Huge thanks to everyone involved for their fantastic efforts





Global Rail Construction Limited, has achieved a significant milestone on the A2SM project during Weekend 09, with the successful completion of the second stage commissioning at Whittlesea.

Working in close collaboration with valued client **AtkinsRéalis**, GRCL has successfully introduced and commissioned five new colour light signals, along with associated assets including Vortok, AWS, TPWS, and new location cases. As part of this phase, six mechanical signals were commissioned and associated lineside mechanical equipment was also removed.

GRCL completed the full civils scope, contributing to the overall success of the weekend.

As a Group, we are proud to share that feedback has been overwhelmingly positive across all teams involved. This success is a direct result of strong collaboration, engagement, and a shared commitment to safety and high-quality delivery throughout the project.

Marco Lombardelli (GRCL MD) stated ***“A fantastic effort to achieve such a excellent and positive outcome. Great collaboration and team work between all parties ensured that this project was delivered safely and successfully. Onto the next one team and well done all involved”***





Progress on the Cambridge Resignalling Project: Another Successful Installation by Global Rail Construction

Global Rail Construction is proud to report the successful completion of another critical phase on the Cambridge Resignalling Project, reinforcing our commitment to delivering high-quality rail infrastructure across the UK. Our skilled team has been working tirelessly to support the modernisation of the Cambridge rail network, undertaking a wide range of essential civils works.

Recent achievements include:

- **Installation of distribution boxes and hardstanding areas** – providing vital support infrastructure for new signalling systems.
- **Construction of the signal walkway at CA115** – enabling safe and efficient access for maintenance and inspection teams.
- **Completion of multiple base of post (BOP) and location area works** – laying the groundwork for future signal and equipment installations.

These works are a key part of the overall resignalling effort, aimed at improving safety, reliability, and performance across this crucial part of the network.

We are proud to be delivering this project on behalf of our client, **Alstom**, and contributing to the ongoing transformation of rail infrastructure in the region. Our team remains focused on delivering excellence, meeting key milestones, and ensuring that all works are carried out safely, efficiently, and to the highest standards.



PROMOTION



We are pleased to announce some well-deserved promotions for Global Rail Construction Limited (GRCL).

Nick Ansell has been promoted to Business Development Director. He has worked for GRCL for five years as a Business Development Manager and has been an invaluable member of our UK team during that time, instrumental in cultivating and developing opportunities for the business and supporting work winning activities during a period of growth and change for the business. We are confident that he will continue this record of success in his new position overseeing business development of the UK business and adding value as a member of the leadership team.

We also announce the promotion of Nick Turner FAPM MIET to Project Director, to lead our UK multi-disciplinary projects. Nick Turner has been with GRCL for six years, working as the Head of Rail Systems, successfully delivering UK rail projects and leading our S&T and MEP Divisional offerings, and will be a welcome addition to the leadership team.

He will be supported by Barry Smith in his newly promoted role as Contracts Manager for the UK.

Please join us in congratulating them all on their contributions to their respective departments and our company. We know they will perform admirably in their new positions.

Our USP is without doubt our people and our long-term strategy will ensure we continue to invest in and develop our people to enable us to deliver our customers expectations, in an efficient and consistent manner



Powering Communities: Global Rail Services Supports ESB Networks in Louth and Meath

Global Rail Services (GRS) is proud to announce our successful collaboration with **ESB Networks** on a series of major projects, delivering both planned and emergency works under the ESB framework across County Louth and County Meath.

Our work has made a meaningful impact on local communities by helping to deliver critical infrastructure. We take great pride in the quality of our workmanship and the timely, efficient completion of each project.

Over the Easter holidays, our team worked closely with ESB Networks and Louth County Council on a vital power infrastructure project in the Crushrod Avenue area of Drogheda.

The goal: to provide electrical connectivity for newly constructed apartment blocks within a highly congested, high-traffic zone.

Given the sensitive location—adjacent to emergency routes leading to Lourdes Hospital—time was of the essence. Each day, our **GRS** teams carried out precise and efficient operations: excavating the roadway, installing ESB ducting at the required depth, and temporarily reinstating the surface to minimise disruption and maintain open access for traffic and emergency services. This complex project required seamless coordination with multiple stakeholders, including ESB Networks, Irish Water, Gas Networks Ireland, and Louth County Council. Detailed planning, comprehensive surveys, and clear communication were crucial to managing work at a busy intersection and roundabout.

In total, our crews excavated over 240 meters of trench at a depth of 900mm and width of 600mm. The roadway was saw-cut, surface material removed, and ESB ducting installed in a sand surround with warning boards and tape. Each evening, the trench was backfilled with lean mix concrete, side-sealed, and temporarily reinstated with SMA10 surfacing to restore traffic flow. Following completion of the ducting works, **GRS** excavated joint pits at each end of the trench, enabling ESB Networks to make final connections and power the new apartment developments.

This project exemplifies our commitment to delivering high-quality infrastructure solutions under pressure, with minimal disruption to the public and maximum benefit to the community.







Partnering for Reliable Connectivity: ESB Telecoms & Global Rail Services

As a subsidiary of the ESB Group, **ESB Telecoms** brings reliability, credibility, and long-term vision to the forefront of their operations. Specialising in robust communication infrastructure, they serve mobile network operators, critical infrastructure providers, and data centres across Ireland. With the backing of a stable semi-state ownership model, **ESB Telecoms** operates as an open-access wholesale partner, offering flexible, secure, and dependable tower and fibre solutions that empower customer success.

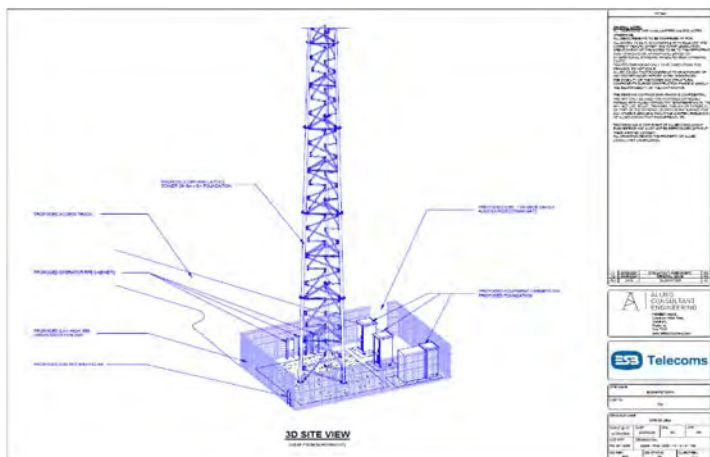
Global Rail Services is proud to support **ESB Telecoms** in delivering critical telecom infrastructure across the ESB network. Our work includes the development of new telecommunication mast sites at both ESB substations and Greenfield locations, as well as the refurbishment of existing ESB Telecoms sites.

Our scope of work includes:

- Site development and groundworks
- Construction of mass concrete tower bases and associated structural supports
- Installation of customer equipment plinths
- Tower and monopole erection and rigging, including fall arrest systems
- Earthing systems installation and certification
- Ducting and metering unit provision for ESB power connections
- Installation of boundary fencing and access gates
- Material management and logistics coordination
- Certification for all key equipment installations

Together, **ESB Telecoms** and **Global Rail Services** are building the backbone of Ireland's next-generation communications infrastructure.

Greenfield Site ESB Bogganstown



Project Update: Accessibility Works at Maynooth Train Station

As of mid-May 2025, significant progress has been made on the Maynooth Train Station Accessibility Project. The majority of civil works are now complete, including all piling operations, major excavations, and reinforced concrete (RC) foundation works.

During excavation and piling, rock was encountered, necessitating design changes to the Under Track Crossing (UTX). Following a series of proposals and investigations, an effective and approved solution was agreed upon with Irish Rail. All precast concrete elements were approved and delivered in early June. The RC bridge lift is planned for early July, marking a major milestone in the project.

Once the bridge is installed, mechanical and electrical (M&E) teams, along with lift installation crews, will mobilise to complete their works. Final civil works—including ground reinstatement—will follow, targeting overall project completion by late September to early October. Despite its challenges, the project is progressing strongly and will become the third of its kind successfully delivered by Global Rail Services.

The final stages will involve platform paving, footpath construction, and road surface enhancements—further improving accessibility and functionality at Maynooth Station. With solid progress to date, **Global Rail Services** remains on track to deliver a high-quality outcome that supports a more inclusive and efficient travel experience for all passengers.





GRCL CHARITY FUNDAY



On 23rd May, our UK Global Rail Construction Limited (GRCL) family held a fantastic charity funday at its Hatfield office. Enjoying a raffle, BBQ, silent auction, crazy golf, and many other activities - it was truly a brilliant day, filled with fun, laughter, and delicious food!

We're thrilled to announce that we raised an incredible £762.00 - an amazing achievement. Even better, GRCL agreed to double this amount, bringing the total to an astonishing £1,524.00!

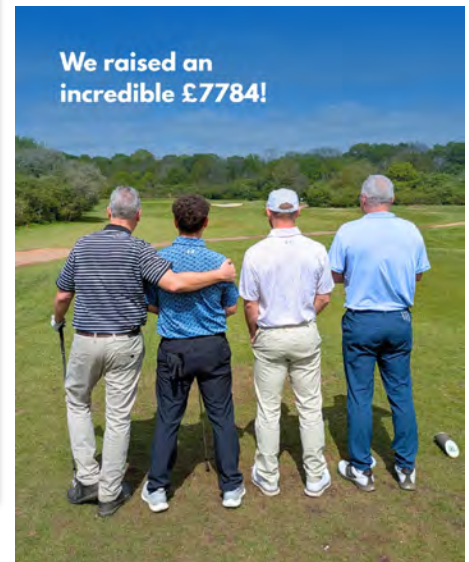
This means that both of the UK's chosen charities—Herts Young Homeless and Mind - will each receive a fantastic £762.00 to support their vital work.

A huge thank you to everyone who attended, participated, and donated so generously.
Your support means the world.





Supporting Vulnerable People in Hertfordshire



We were proud to support Herts Young Homeless at their recent Golf Day, held at Mill Green Golf Club in Welwyn Garden City on 24th April.

With the sun shining and spirits high, it was a fantastic day of golf, camaraderie, and most importantly raising vital funds for a truly important cause.

A huge well done to everyone who took part and helped make the day such a success!



Herts Young Homeless (hyh) May Gala Dinner was a fantastic evening filled with food, entertainment, laughter and heartfelt stories — all in support of local young people facing homelessness.

Marco Lombardelli (GRCL MD) attended the event with some colleagues and said the evening was a fantastic fundraising occasion.

HYH said a heartfelt ***“Thank you everyone for coming! Your support and contributions means everything to us and the young people we support. We couldn’t do it without you. Thank you to everyone who supported us in raising an incredible £23,793!”***





HCPT was formed in 1956 after a young doctor, Michael Strode, first took children with many types of disability and special needs on an annual holiday to Lourdes. His idea was to revolutionise the way these special children could experience a trip to this famous shrine in the foothills of the French Pyrenees. However, he wasn't content to let them stay in the usual hospitals and hospices. He wanted them to experience the luxury of hotels; to be treated as honoured guests, to be helped to gain as much out of their holiday as other children – outings to cafes, ice-creams, trips to the seaside and the mountains. He also wanted them to feel enveloped in warmth, affection and individual attention and so the idea of small family groups was born.

From those small beginnings some fifty years ago, Dr Michael's vision has grown enormously. Nowadays, during Easter week, **HCPT** and the Irish Trust (**IHCPT**) take around 2000 children and young people aged 7-18 years to Lourdes from all over the UK, Ireland and increasingly from other European countries; even the USA and West Indies.

For all these children and young people, the opportunity to experience – sometimes for the first time – a really stimulating and highly enjoyable group holiday, plus a measure of independence probably not previously experienced, with the reassurance of 'two to one' help – can be an enormous step forward in their personal growth.

This year, our very own GRCL Quantity Surveyor, **Als Lombardelli**, took part in something truly special – volunteering with **HCPT149**,

Als described his time volunteering as ***“a truly honourable experience,”*** saying he ***“thoroughly enjoyed every moment spending time with all the fantastic people in the group.”***

His words capture the heart of what **HCPT** is all about – building community, creating joy, and helping every child feel seen and celebrated.

We're proud of Als for giving his time to such a meaningful cause, and we thank him for representing GRCL with such compassion and dedication.





Since 2001, the Mental Health Foundation has been leading Mental Health Awareness Week - bringing the UK together to focus on getting good mental health. This year, the week took place from **12 to 18 May 2025**.

Our teams across the globe supported Mental Health Awareness Week and celebrated the power and importance of community.

We aim to support our teams in safe and positive environments. Providing strong personal

connections across our working community to remind us that we are not alone, and to offer a safe place and a sense of belonging to give everyone a sense of purpose.

Prioritising Wellbeing

In a fast-paced industry like ours, where deadlines are tight and safety is paramount, the mental wellbeing of our team cannot be an afterthought. We recognise that the pressures of work, personal life, and the world around us can impact anyone, and we're committed to supporting our staff every step of the way.

We've implemented several initiatives designed to foster a supportive and open environment, including:

Mental Health First Aiders: Specially trained team members available to offer support and direct staff to appropriate resources.

Regular Wellbeing Check-Ins: Managers are encouraged to check in regularly with team members, not just about work—but about how they're doing in general.

Awareness Campaigns: During Mental Health Awareness Week and beyond, we share resources, tips, and stories to help break the stigma around mental health.

Access to Professional Support: Our employee assistance programme offers confidential access to counselling and mental health support whenever it's needed.

Creating a Culture of Openness

We are proud to promote a culture where talking about mental health is not only accepted—but encouraged. Through workshops, internal campaigns, and leadership support, we make sure our staff know they're not alone.

We've found that when people feel supported and understood, they're not only happier—they're safer, more focused, and more engaged in their work. That's a win for everyone.

Looking Ahead

As we continue to grow, we're committed to evolving our approach to mental health, listening to staff feedback, and investing in new ways to support our team.

Because at Global Rail Construction, we don't just build infrastructure—we build people up too.



Congratulations



Celebrating James Sykes' Outstanding Achievement!

A huge congratulations to James Sykes, **Global Rail Construction Ltd** (GRCL) Project Manager, on achieving a First-Class Honours Bachelor of Science in Construction Management!

This prestigious qualification covers the complexities of construction project management, including resource coordination, quality assurance, and project oversight—skills that are crucial in our industry.

James began his journey with **Global Rail Construction** in 2012 as an apprentice. Over the past 12 years, he has demonstrated unwavering dedication and hard work to reach this incredible milestone.

James was also honored with a university award in recognition of his outstanding performance.

Niall Taaffe, GRCL Operations Director, shared his pride in James' success:

"I have mentored James since he first joined Global Rail Construction, and it's truly inspiring to see him achieve this today. He is incredibly hardworking and a fantastic asset to the company. On behalf of the entire GRCL family, we couldn't be prouder of him."

Congratulations James
We look forward to seeing your continued success at GRCL



Our vision is that everyone arrives for work healthy and leaves for home safely, everyday.

Celebrating



Celebrating 20 Years of Leadership, Dedication, and Impact - Thank You Jim

On Friday, 18th April 2025, we celebrated an extraordinary milestone - Jim Cuell, our Commercial Director, who marked 20 years with the company. A true leader, strategist, and mentor - Jim's contributions over the past two decades have played a pivotal role in shaping our success.

Since joining Global Rail Construction 20 years ago, Jim has brought more than just commercial expertise — he's brought integrity, vision, and a relentless drive to push boundaries and deliver results. From entering new markets to strengthening client partnerships, Jim has consistently elevated our commercial strategy while staying true to the values that define us.

His leadership has inspired many, his insights have guided countless decisions, and his presence on the leadership team has been nothing short of transformative.

As our Managing Director, Marco Lombardelli, shared:

"Jim has been instrumental in our journey. His strategic mind, commercial acumen, and unwavering loyalty have made a significant and lasting impact on our business. It's rare to find someone who combines such deep industry knowledge with genuine care for people – we're incredibly fortunate to have had Jim leading the way for the past 20 years."

Jim, thank you for your dedication, your partnership, and your enduring impact. Your legacy is one of growth, excellence, and integrity — and we're proud to celebrate this incredible milestone with you.

Here's to the past 20 years — and the future still to come.



CELEBRATION



HAPPY BIRTHDAY

60

A very Happy **60th** Birthday to Nisad Jakupovic
(GRCL Senior CAD Technician)
who celebrated his birthday in April.

We all hope you had a wonderful time celebrating this milestone birthday

Celebrations

30

HAPPY BIRTHDAY



A very Happy **30th** Birthday to Als Lombardelli
(GRCL Quantity Surveyor)
who celebrated his birthday in May.

We all hope you had a wonderful time celebrating this milestone birthday

We love celebrating the milestones and achievements of our team members, from birthdays and anniversaries to personal and professional accomplishments. If you have something special to share, let us know—we'd be delighted to include it in our next newsletter.



Farewell to a GRS Legend: Dan Sweeney Retires

After more than a decade of unwavering dedication, Dan Sweeney—Project Manager at Global Rail Services—has officially retired, closing a remarkable chapter that began all the way back in 2012.

His retirement marks the end of an era defined by steady leadership, quiet resilience, and exceptional technical expertise.

Throughout his years at GRS, Dan played an integral role in countless projects, earning the admiration and respect of colleagues, clients, and contractors alike. His calm approach to even the most complex challenges made him a trusted presence on site and a mentor to many within the organisation.

Dan's influence reaches far beyond the job title—he leaves behind a legacy of professionalism, humility, and friendship that has deeply shaped our culture.

To celebrate his retirement and reflect on his incredible journey, the GRS family hosted a special send-off at the Dublin office, followed by an evening of laughter, stories, and heartfelt moments at Newbridge Greyhound Stadium.

The event brought together a vibrant mix of past and present colleagues, friends, and family—all there to honour the man who gave so much of himself to the GRS mission.

Dan's retirement celebration was more than just a goodbye—it was a tribute to a career well-lived and a life well-shared. We wish him every happiness and success in this exciting new chapter, knowing that his legacy will continue to inspire us for many years to come.



Thank you, Dan, for everything

Global Rail Services

Unit 516a Grants Rise
Greenogue Business Park
Rathcoole, Co Dublin
D24 FH56
Ireland

+353 (0) 1 458 8540

Global Rail Services has proven experience in delivering some of the most exciting projects across a diverse range of service sectors.

Our in-house capabilities, our scale and our supply chain partnerships have allowed Global Rail Services to deliver complex multi-disciplinary projects that make a positive difference to our clients, across the Irish infrastructure industry that we serve.



Part of the RSK Group of companies

A Leading Provider Of Turnkey Solutions For The Rail Industry



Railway
Construction



Civil
Engineering



Telecomms



Multi-Utilities



Power
Networks



General
Construction



Design and
Consultancy

Combining technical and innovative excellence with a
real passion for detail and safe delivery of projects

www.theglobalinfrastructuregroup.com