



Part of the RSK Group of companies

Issue 44 2025

GLOBAL NEWS



In This Edition.....

- * Project News**
- * Celebrations**
- * Charity Events**
- * New Starters...**



globalnews@grcl.co.uk

Foreword

Welcome to issue 44 of the Global News Magazine

2025 is no doubt a challenging year in the rail industry, both in the UK and Ireland. However, as part of the RSK Group we are fully supported in finding alternative avenues to expand our capabilities, within and outside the rail environment.

On the project front, our UK colleagues in GRCL continue to successfully deliver for Alstom. The Cambridge Resignalling Project being a mainstay in on-going activity.

Meanwhile at Clapham our work for AtkinsRealis on the Clapham Shunters Accommodation Renewal project has reached the first recovery phase of the accommodation. Ground investigations, in-situ foundations, duct routes all delivered to a very high standard indeed.

In Ireland, one of the larger projects for Global Rail Services, the Maynooth Station Accessibility Upgrade works has now completed a critical milestone. The precast footbridge was successfully landed within a very tight possession timeframe. The on-site team have done a superb job in managing all of the civil, mechanical and electrical works to-date and we are looking at substantial completion in Q4 25.

The Telecoms team at Global Rail Services have successfully secured a number of Tower build projects within the recently awarded 5-year ESB Tower Framework Agreement (Electricity Network Operator). Works involve foundation build / enhancements and compound builds at multiple sites on the network.

A special mention must be made to Safety Coaching, whereby non-Safety Professionals like you & I, can attend upskilling workshops to assist with and continuously improve the level of H&S of our workforce. Our UK colleagues are rolling this initiative out with immediate benefit to-date.

Our nominated charity, Herts Young Homeless, was well supported and saw Charlie Rice step into the ring (hope the ears aren't still ringing Charlie) and Barry Smith, Kieron Lickfold, Scott Spencer and Billy Beechey zoom around the racing circuit at the charity Track Day.

Finally, Jim and Ali Cuell will participate in a half marathon this October, to support this much needed charity.

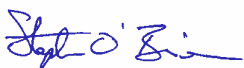
This month we have the pleasure of announcing a 10-year service milestone. Lee Cresswell was presented with his award by Barry Smith. Congratulations Lee! Not to be outdone, Global Rail Services will have six 10 & 15 year service awards planned for next month's edition!

Fergus McDonnell one of our new start Project Engineers, in the Irish Civils department, speaks to "A Day in the life".

And finally, we are delighted to welcome our new starters at Global Rail Services; Kris McCloskey and Fergus McDonnell and at Global Rail Construction; Lilla Lomonaco and Nik Krasniqi.

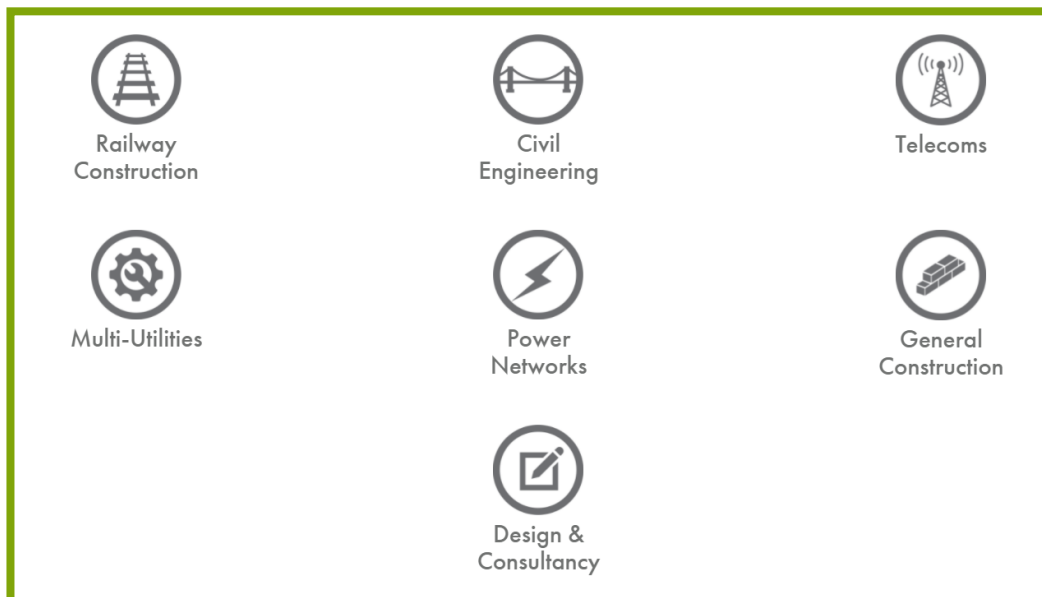
Welcome on board everyone, it's great to have you as part of the team.

On behalf of the management team in the UK and Ireland, I would like to thank you for all your commitment and dedication, we truly appreciate your effort each and every day.



Stephen O'Brien
Managing Director, Global Rail Services, Ireland





Passionate

Committed in heart and mind to whole-heartedly embrace our core values and culture, without exception.



People

Growing our organisation from within, promoting and empowering our people, inspiring them to be the best they can be.



Professional

At all times we act with integrity, providing quality service, reliably and responsibly.



Teamwork

Working collaboratively whilst supporting and respecting each other's views.



Responsible

To consistently deliver quality, on time, safely and to budget whilst protecting our communities and the environment.





Our **GRCL team** is sharing images below, highlighting the installation of various (LODs) and (BOPs) areas as part of the Cambridge Resignalling Project, completed on behalf of client **Alstom**.

This project plays a crucial role in modernising the railway infrastructure around Cambridge, improving operational safety and efficiency.

The team look forward to continuing to support innovative rail projects that make a real difference to transport infrastructure.



Our vision is that everyone arrives for work healthy and leaves for home safely, everyday.



Project Update – Clapham Shunters Accommodation Renewal

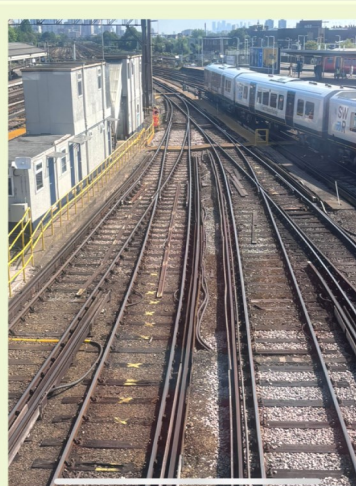
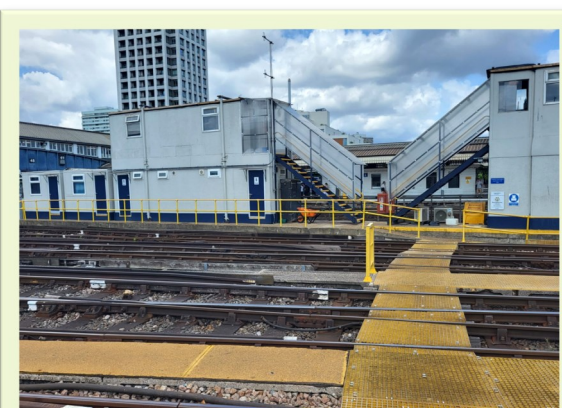
GRCL is proud to be supporting and delivering a key infrastructure project in collaboration with our valued client, **AtkinsRéalis**, at Clapham. We are now approaching the first recovery phase of the existing high-mileage accommodations. Thanks to the dedication of our hardworking teams, the critical enabling works have progressed smoothly, keeping us firmly on track to meet this important project milestone.

All works to date have been delivered to a high standard, with a strong emphasis on collaboration and, above all, safety.

Completed works include:

- RRAP (Road Rail Access Point) upgrade works
- Ground investigations
- Installation of new buried duct routes
- Stakka-box installations
- New cast in situ foundations
- Installation of new LV distribution cubicle
- Temporary welfare arrangements
- Installation of new radio antenna equipment
- Installation of new lineside housings

A big thank you to our teams and partners for their continued professionalism and commitment. We look forward to sharing more updates as the project progresses.





Global Rail Services working on behalf of **Irish Rail** has completed the safe and successful installation of a new precast concrete footbridge at Maynooth Station.

A brilliant effort from all concerned - with special thanks to our site and project management teams' and partner Kavanagh Crane Hire Ltd.

An integral element of **Iarnród Éireann's** ongoing investment programme is to continuously improve accessibility of its stations and services. New accessible footbridges have already been completed by **Global Rail Services** at Dalkey and Gormanston previously, and these works further showcase the fully managed, multi-disciplinary rail capability of our Irish business.



Our vision is that everyone arrives for work healthy and leaves for home safely, everyday.



ESBT New Build Framework Agreement

As part of the ESB Telecoms Tower Build & Maintenance Framework Agreement we have been awarded several tower extension projects by ESB Telecoms. The works consisted of foundation upgrade and enhancement works to allow additional capacity on the existing monopole by adding extensions to increase space for additional telecom operators. The two most recent projects were Naas 38kv and Malahide 38kV stations

ESB Naas 38kV Station

This project consisted of the development of an existing compound within the sub-station. The works included construction of a concrete plinth above the existing plinth to increase the foundation mass to facilitate the installation of a tower extension to accommodate additional telecom operators.

ESB Malahide 38kv Station

The work at Malahide 38kV consisted of the installation of a 6m extension to the existing monopole at ESB Malahide. As well as the extension we had to extend the fall arrest system to the new height and install a new aircraft warning light. This project was practically difficult to plan due to its proximity of the electrical substation and the national rail line.





Thank you



Charlie Rice Steps into the Ring for Charity

We're incredibly proud to celebrate the recent achievement of **Charlie Rice**, one of our dedicated CAD Engineers here at GRCL, who bravely took part in a **Charity White-Collar Boxing event** in July as part of the Ultra MMA series.

Charlie chose to raise money for **Herts Young Homeless (hyh)**, a local charity doing vital work to support young people facing homelessness.

Through weeks of intense training and an impressive show of grit and determination on fight night, Charlie not only stepped into the ring — he stepped up for a cause that truly matters.

Thanks to the amazing support of friends, family, colleagues, and the wider GRCL community, Charlie successfully raised **£345** for **hyh**.

Every penny will help provide crucial support services, advice, and accommodation to young people in need.

We'd like to extend a heartfelt thank you to everyone who donated and supported Charlie along the way.

Your generosity made a real difference — and we're honoured to have team members like Charlie who are willing to go above and beyond for others.



Well done, Charlie — your efforts inspire us all!



Putting the Pedal to the Metal for Charity

A huge thank you to **Barry Smith (Construction Manager)**, **Kieron Lickfold (QS)**, **Scott Spencer (Site Manager)**, and **Billy Beechey (Planner)**, who proudly represented Global Rail Construction Ltd at the **HYH Charity Track Day** this July.

The team took to the track for a day of high-speed fun and friendly competition — all in support of a fantastic cause. Their efforts, along with others involved in the event, helped raise an incredible **£7,180** for **Herts Young Homeless (hyh)**.

Here's what **hyh** had to say about the day:

"Thank you to you and your lovely team for supporting our Track Day yesterday. It was great to see everyone come together, enjoy some friendly competition, and put the pedal to

the metal. Thanks to you, we crossed the finish line having raised a fantastic £7,180 to help us continue our work supporting vulnerable young people in Hertfordshire who are homeless or at risk of it."

A fantastic day for a truly worthy cause — well done to everyone involved.



Supporting Vulnerable People in Hertfordshire

Support Jim & Ali Cuell in the Royal Parks Half Marathon for Herts Young Homeless

We're delighted to announce that Jim Cuell, GRCL's Commercial Director, along with his wife Ali, will be taking on the Royal Parks Half Marathon this October to raise funds for **Herts Young Homeless (HYH)**—a charity dedicated to supporting young people who are homeless or at risk of homelessness in Hertfordshire.

The Royal Parks Half is one of the UK's most scenic and iconic races. The 13.1-mile course takes runners on a breathtaking journey through four of London's most beautiful Royal Parks: Hyde Park, Green Park, St. James's Park, and Kensington Gardens. Along the way, participants will pass by some of the capital's most famous landmarks, including Buckingham Palace, Trafalgar Square, Westminster Abbey, the London Eye, and Kensington Palace.

The race is well-known not only for its picturesque route but also for its inclusive, feel-good atmosphere. With closed roads and a relatively flat course, it's accessible to runners of all abilities and provides an uplifting experience from start to finish—whether you're running, cheering, or supporting from afar.

Why HYH?

While this is a personal physical challenge for Jim and Ali, it's also an opportunity to support a cause that touches the lives of many young people right in our community. **Herts Young Homeless (HYH)** offers critical services to 16–24-year-olds who are homeless or at serious risk of becoming homeless.

Many of us are lucky enough to take the basics of shelter, safety, and family support for granted. However, for a growing number of young people in Hertfordshire, these are daily concerns. Whether they are street homeless, sofa-surfing, or staying in unfit and unsafe conditions such as cars or squats, their situations are both hidden and heartbreaking.

HYH works tirelessly to intervene early, offering education, advice, mediation, and ongoing support to young people in need. Their goal is not just to respond to crises, but to prevent homelessness altogether—helping young people to find security, stability, and the chance to build a brighter future.

How You Can Help

We know there are many incredible causes out there, but if you're able to support Jim and Ali's effort, your donation—no matter how small—will go directly toward helping **HYH** deliver vital services. Whether it funds emergency accommodation, mental health support, or housing advice, your contribution will make a **real and lasting impact**.

You can show your support by visiting their fundraising page here:

➡ justgiving.com/fundraising/jimcuell2025



**Let's get behind Jim and Ali as they take
on this exciting challenge
for such a meaningful cause.
Thank you in advance for any support
you can give—
it truly does make a difference.**



Global
Rail
Construction

Safety Coaching

As part of our ongoing journey for continuous improvement with regards to our Safety Culture, we have been spending time focussing on the critical importance of the role of our Safety Coaches. Our coaches have been a part of our workforce since around 2013, playing a key role in keeping our workforce safe from harm and helping us to deliver first class projects for our clients. Safety coaches have been the company's eyes and ears along with being a friendly and respected colleague who can be approached and who offers assistance and guidance. They are a vital conduit for safety messages both to and from our front-line workers, whilst providing an early warning system for us to predict and prevent harm and damage.

It is sadly true that 'speaking up' about safety concerns is still a stigma in our industry with many saying that they remain concerned regarding the potential consequences, if they do, some are simply not confident in being able to actually speak up. Using our safety coaches, we have installed a safe (and if required) an anonymous conduit for anyone who still thinks there is an issue whilst taking the opportunity to demonstrate that at **Global Rail Construction**, there is never a negative consequence if anyone speaks out with a safety concern and indeed there is positive recognition for those that do.

Safety Coaches are currently going through some refresher and upskilling workshops supported by our Senior Leadership Team who have also received renewed awareness training in how to actively support our Safety Coaches and to further support the important part they play in our Continuous Improvement Programme.

The key thing to remember is that our Safety Coaches are not Safety Professionals, they simply have the health and safety of our workforce at the forefront of their minds, are confident and capable to intervene, challenge, discuss and escalate issues, if needed.

We have received positive feedback from our coaches and workforce alike in this refreshed approach. Our coaches are spread out across worksites and project offices alike and always available for a chat.

If you would like to find out more about our Safety Coaches, please contact either Peter Coleman (peter.coleman@grcl.co.uk), Henry Bonuah (henry.bonuah@grcl.co.uk), or any of our Senior Leadership Team, who will be more than happy to help you.

"It is great to see our Safety Coaches in action, having those face-to-face discussions with the front-line teams and our office staff, particularly around behaviours and working practices, it really does make a difference"

Nick Turner (Projects Director).

"As a Safety Coach, one of the greatest successes I see is that when issues are raised and discussed in our coaches meetings, they are now routinely actioned leading to greater trust in our leaders and a safer, healthier and happier workplace."

Gary McMullen (Supervisor)

"As a primarily office based Safety Coach, it is great to be able to talk openly and share experiences with colleagues not just about physical safety but on Mental Health and Wellbeing issues which are so vitally important to encourage us to recognise signs and symptoms both personally and in others and know how and where we can get help."

Ian Foster (Senior Design Engineer)

Safety Coaches



What is a safety coach?

Someone who-

- cares about workforce safety
- leads by example by following the rules
- is respected and trusted as a safe leader
- knows how to escalate issues to senior management
- promotes the benefit of close call reporting and can demonstrate the reporting process
- helps all workers on how to raise safety concerns
- can help deal with 3rd party and lineside neighbour concerns professionally and respectfully
- help communicate safety messages effectively

Why do we need them?

They are an effective workplace communication link in our safety journey to prevent harm or damage by-

- Monitoring and observing workplace behaviours
- Conducting regular safety conversations in a style that creates a win - win scenario using coaching and influencing techniques

They are also someone-

- Who looks out for non compliances with site safety rules throughout their shift
- Who is seen to personally challenge unsafe acts and unsafe conditions
- Who is the go-to person if anyone has a concern
- Who has the full trust and support of their senior managers
- Who takes pride in achieving the safe delivery of a task



Global
Rail
Construction



Our vision is that everyone arrives for work healthy and leaves for home safely, everyday.

Congratulations

Alec Ralph, Senior Design Engineer at Global Rail Construction Limited (GRCL), has been awarded Eur Ing. qualification, a prestigious recognition awarded by Engineers Europe.

The Eur Ing. title demonstrates Alec's commitment to maintaining the highest professional standards and highlights his engineering competence on a European level. This qualification also promotes the international mobility of engineers across Engineers Europe's member countries and beyond.

Richard Horsted, Senior Design Manager at GRCL, shared his congratulations:

"Congratulations to Alec on this well-earned recognition! This achievement is a testament to his exceptional engineering talent and deep expertise across a wide range of industry sectors. Alec consistently brings innovative thinking, technical excellence, and a collaborative spirit to every project he undertakes. His diverse experience and problem-solving mindset make him a true asset to any team. Well done, Alec!"



Our USP is without doubt our people and our long-term strategy will ensure we continue to invest in and develop our people to enable us to deliver our customers expectations, in an efficient and consistent manner

A DAY IN THE LIFE OF

In this issue, we meet Fergus McDonnell, Project Engineer for Global Rail Services



Why did you choose this profession?

I enjoy working outdoors and prefer being on-site rather than sitting behind a desk all day.

What does a typical day in your role look like?

My day usually involves setting out, handling paperwork, resolving site issues, and coordinating with subcontractors and clients.

What do you enjoy most about your job?

Watching a project evolve from lines on a blueprint to a finished structure — seeing it all come to life.

What are you passionate about?

Spending quality time with my family.

What inspires you the most?

Nature — its scale, beauty, and calmness.

What kind of music and movies do you enjoy?

I listen to a wide range of music, though I'm not a fan of rap. When it comes to films, I'm drawn to sci-fi.

What are you most proud of?

Raising four children — it's been my greatest achievement.

How do you like to spend your free time?

At the moment, I'm focused on renovating a 1950s bungalow that was once owned by two bachelor farmers.

What are your hobbies and interests?

DIY projects, gardening, and spending time with my dogs.

Do you have a favourite sport?

Snooker — I find it both relaxing and mentally engaging.

What's the best compliment you've ever received?

A stranger once told me I looked very dapper — all because of the way I was dressed!

THANK YOU FERGUS, FOR YOUR TIME

CELEBRATION



Lee Cresswell, GRCL Carpenter, has officially completed **10 years of service** with Global Rail Construction Ltd.

Lee joined GRCL in 2015 and has since become a valued member of the team, known for his craftsmanship, reliability, and unwavering commitment to quality. Over the past decade, Lee has contributed to countless projects, consistently demonstrating the skill and professionalism that define our workforce.

To mark the occasion, Barry Smith, GRCL Construction Manager (R), presented Lee with his 10-year service award, recognising not only his longevity but the impact he's made across the business.

"Lee's dedication and work ethic have been second to none," Barry shared. "He's a true asset to the team, and it's a pleasure to celebrate this milestone with him."



HAPPY BIRTHDAY

A very Happy **70th** Birthday to Gerry Gallagher
(GRCL Operative)

who celebrated his birthday in July.

We all hope you had a wonderful time celebrating this milestone birthday



HAPPY BIRTHDAY

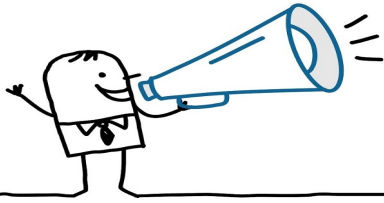
A very Happy **50th** Birthday to Abdul Oni
(GRCL Planner)

who celebrated his birthday in May.

We all hope you had a wonderful time celebrating this milestone birthday



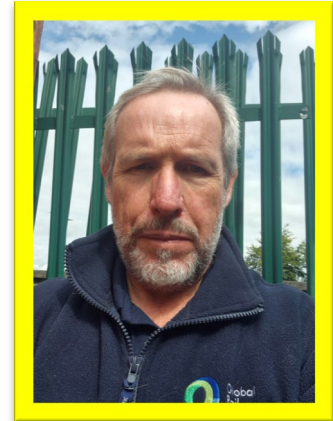
We love celebrating the milestones and achievements of our team members, from birthdays and anniversaries to personal and professional accomplishments. If you have something special to share, let us know—we'd be delighted to include it in our next newsletter.



Welcome To The Global Family...



Kris McCloskey
Project Engineer



Fergus McDonnell
Project Engineer



Lilla Lomonaco
Trainee Quantity Surveyor

Our USP is without doubt our people and our long-term strategy will ensure we continue to invest in and develop our people to enable us to deliver our customers expectations, in an efficient and consistent manner



Part of the RSK Group of companies

A Leading Provider Of Turnkey Solutions For The Rail Industry



Railway
Construction



Civil
Engineering



Telecomms



Multi-Utilities



Power
Networks



General
Construction



Design and
Consultancy

Combining technical and innovative excellence with a
real passion for detail and safe delivery of projects

www.theglobalinfrastructuregroup.com