

## WHO WE ARE

## OUR VALUES

## OUR SERVICES

- Civil, Structural Engineering and Building
- Mechanical, Electrical and Power
- Signalling
- Permanent Way
- Design and Consultancy

## OUR TEAM

## OUR PROJECTS

- Civil, Structural Engineering and Building
- Mechanical, Electrical and Power
- Signalling
- Permanent Way

## GET IN TOUCH

# GLOBAL RAIL CONSTRUCTION LTD



# WHO WE ARE





**Global Rail Construction Ltd is a Principal Contractor and a leading UK provider of design and build services to clients in the rail and transportation sector. We offer rail infrastructure contracting services on a design and construct basis.**

Our capabilities support the latest technology, management and engineering know-how, which allow us to deliver rail projects and services to the highest standards of quality and safety.

As a Principal Contractor, we have delivered a number of key, high profile opportunities throughout the UK rail network on both Transport for London and Network Rail infrastructures.

Our experienced professionals have an in depth knowledge of UK rail systems and offer our clients a service that helps them plan, design, build and maintain their railway infrastructure. We have the know-how to deliver multi-disciplinary turnkey design and construct projects. We work to meet and exceed our client's needs on time and within budget. We understand the importance of minimising disruption to their operations while we work.

Working on mainline railways and metro systems in the UK, our inclusive approach allows us to offer a full in-house solution and provide end-to-end design, build, test and commission services in the following areas:

- Civil, Structural Engineering and Building
- Mechanical, Electrical and Power
- Signalling and Telecommunications
- Permanent Way



*"We have delivered a number of key, high profile opportunities throughout the UK rail network."*



## **WHO WE ARE**

## **OUR VALUES**

## **OUR SERVICES**

- Civil, Structural Engineering and Building
- Mechanical, Electrical and Power
- Signalling
- Permanent Way
- Design and Consultancy

## **OUR TEAM**

## **OUR PROJECTS**

- Civil, Structural Engineering and Building
- Mechanical, Electrical and Power
- Signalling
- Permanent Way

## **GET IN TOUCH**

# OUR **VALUES**





## Core Values



### Passionate

Committed in heart and mind to wholeheartedly embrace our core values and culture, without exception.



### People

Growing our organisation from within, promoting and empowering our people, inspiring them to be the best they can be.



### Professional

At all times we act with integrity, providing quality service, reliably and responsibly.



### Teamwork

Working collaboratively whilst supporting and respecting each other's views.



### Responsible

To consistently deliver quality, on time, safely and to budget whilst protecting our communities and the environment.



## WHO WE ARE

### OUR VALUES

### OUR SERVICES

- Civil, Structural Engineering and Building
- Mechanical, Electrical and Power
- Signalling
- Permanent Way
- Design and Consultancy

### OUR TEAM

### OUR PROJECTS

- Civil, Structural Engineering and Building
- Mechanical, Electrical and Power
- Signalling
- Permanent Way

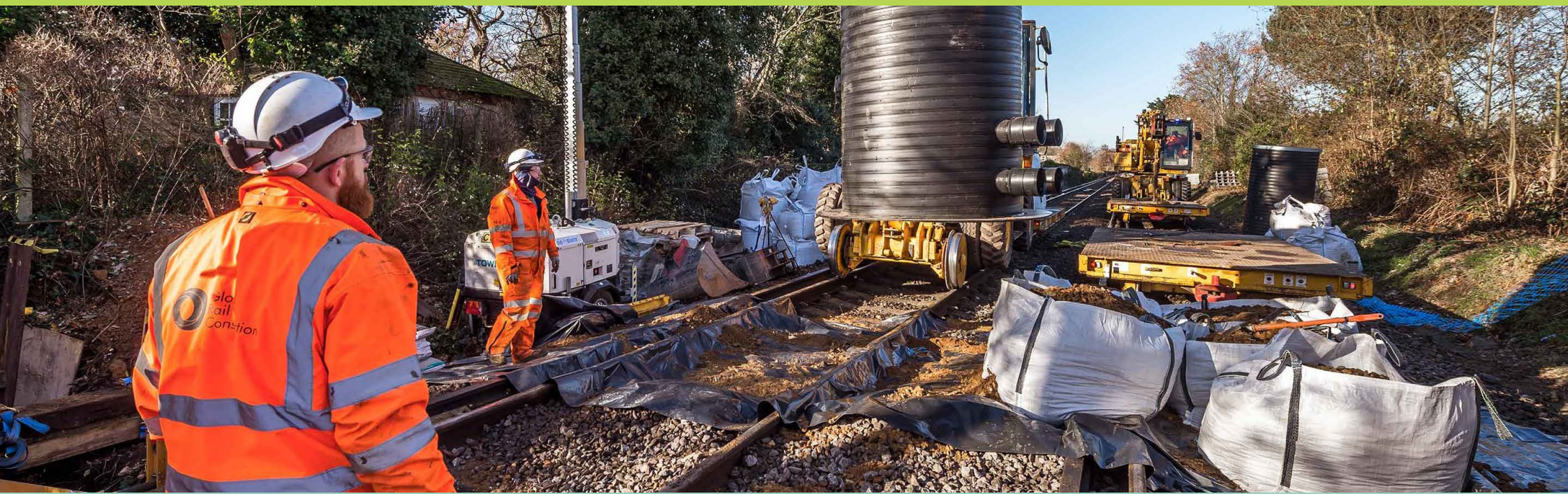
### GET IN TOUCH



*"We have five core values that express our shared understanding of what we believe, how we aim to behave and what we aspire to be as an organisation."*



# OUR SERVICES





# Civil, Structural Engineering and Building

**Global Rail Construction's civil and structural engineering capabilities take full project responsibility and offer a fully managed and integrated service for clients within the railway infrastructure.**

We can provide civil and structural engineering solutions from initial project planning and design, to enabling works covering site surveys, hazard and environmental assessments, procurement, on-site construction and equipment installation, through to final testing and commissioning.

We are flexible in our approach and undertake civil engineering projects on a turnkey, consultancy, main contract, sub-contract or resource supply basis to meet each individual client's requirement.

We apply our skills to new build, refurbishment and maintenance projects, our activities include:

- Condition and dilapidation surveys
- Demolition and remediation
- Temporary works
- Utility services enabling and diversion
- Ground and site investigation
- Site excavation and enabling works
- New build and refurbishment (Sub-Stations, Platforms, Station buildings)
- Road construction
- Embankment works and retaining structures
- In-situ and precast concreting works
- Piling
- Supply, delivery and installation of rail assets including gantries, signals and superstructures



*"Despite facing a number of challenges, the team's diligence and commitment to the project have resulted in it being delivered on time and to perfection."*



## WHO WE ARE

## OUR VALUES

## OUR SERVICES

- Civil, Structural Engineering and Building
- Mechanical, Electrical and Power
- Signalling
- Permanent Way
- Design and Consultancy

## OUR TEAM

## OUR PROJECTS

- Civil, Structural Engineering and Building
- Mechanical, Electrical and Power
- Signalling
- Permanent Way

## GET IN TOUCH

# Mechanical, Electrical and Power (E&P)

**Mechanical & electrical services provided by Global Rail Construction are constantly upgraded through training and development and are consistently delivered to the highest specification.**

The company provides a full and comprehensive range of M&E services, which includes the design, installation and testing of lighting, power, LV switchgear and distribution, lighting control systems, HVAC, CCTV, fire detection, access control, security and BMS. Delivering a diverse range of projects, including, new build, power and lighting for station buildings and platforms, Access for All schemes, sub-station refurbishments and car park lighting schemes.

We provide a full range of specialist rail infrastructure electrical power installations, covering signalling power, principle supply points, sub-main installations, DNO installations, sub-stations, points heating installations, level crossings, junction lighting, REB & signalling equipment rooms and earthing and bonding. Our experienced and dedicated in-house team of specialists have a proven record of successful delivery of multi-disciplinary projects, managing the risks and interfaces associated with rail infrastructure MEP.

Global Rail Construction Limited is an approved contractor with National Inspection Council for Electrical Installation Contracting (NICEIC), an organisation which regulates the training and work of electrical enterprises in the UK.



## WHO WE ARE

## OUR VALUES

## OUR SERVICES

- Civil, Structural Engineering and Building
- Mechanical, Electrical and Power
- Signalling
- Permanent Way
- Design and Consultancy

## OUR TEAM

## OUR PROJECTS

- Civil, Structural Engineering and Building
- Mechanical, Electrical and Power
- Signalling
- Permanent Way

## GET IN TOUCH



*"These works have been delivered with a proactive safety culture. Everybody has gone home safely, which is a fantastic achievement to be proud of."*



# Signalling

**Global Rail Construction has considerable experience in delivering high profile turnkey railway signalling projects and has an extensive portfolio of successfully commissioned projects.**

Working on behalf of, or in partnership with, many of the industry's most respected names, the company's services include the management, planning, installation, test and commissioning of complete railway signalling systems.

The company has particular experience within electronic and relay interlocking, signalling control centres, ATP, TPWS and ATO systems and all associated trackside signalling equipment.

As a Principal Contractor for Network Rail and Transport For London, we have the dedicated project management experience to lead on signalling design and installation projects.

We have a proven track record delivering a diverse range of projects for a wide variety of clients within the railway industry and ensure that our clients are fully supported throughout the entire project life cycle.

From conducting the initial feasibility studies and developing the Construction Phase Plan, through to designing the trackside equipment and implementing the installation process, our project management teams ensure that each element is completed and fully tested and commissioned prior to project sign off.



*"In challenging circumstances the team showed professionalism throughout the works, providing high levels of collaboration, a quality service and delivering the works to meet the project completion date."*



## WHO WE ARE

## OUR VALUES

## OUR SERVICES

- Civil, Structural Engineering and Building
- Mechanical, Electrical and Power
- Signalling
- Permanent Way
- Design and Consultancy

## OUR TEAM

## OUR PROJECTS

- Civil, Structural Engineering and Building
- Mechanical, Electrical and Power
- Signalling
- Permanent Way

## GET IN TOUCH



# Permanent Way

**Global Rail Construction Limited specialise in permanent way construction and maintenance, including the delivery of safe working services, inspection and track handback.**

Our detailed understanding of permanent way maintenance and renewals has been derived from years of experience and our in house expertise covers every aspect of permanent way maintenance and renewals from component exchange through to heavy S&C refurbishment and re-railing activities.

Our in-house specialist teams have successfully delivered design and construct track projects for mainline railway clients, providing cost effective solutions to meet their requirements.

Our services include:

- Re-railing
- S&C Heavy Refurbishment
- Wheel Timber Replacement
- Conductor Rail Replacement (ETE)
- Minor Track Renewals
- Cable Management Sleepers (CMS)
- Track Drainage
- Welding and IBJ Replacement



## WHO WE ARE

## OUR VALUES

## OUR SERVICES

- Civil, Structural Engineering and Building
- Mechanical, Electrical and Power
- Signalling
- Permanent Way
- Design and Consultancy

## OUR TEAM

## OUR PROJECTS

- Civil, Structural Engineering and Building
- Mechanical, Electrical and Power
- Signalling
- Permanent Way

## GET IN TOUCH



## Design & Consultancy



### WHO WE ARE

### OUR VALUES

### OUR SERVICES

- Civil, Structural Engineering and Building
- Mechanical, Electrical and Power
- Signalling
- Permanent Way
- Design and Consultancy

### OUR TEAM

### OUR PROJECTS

- Civil, Structural Engineering and Building
- Mechanical, Electrical and Power
- Signalling
- Permanent Way

### GET IN TOUCH

**Global Rail Construction Ltd's design and consultancy division constantly adapts to new technology and innovation.**

State-of-the-art computer-aided design and simulation systems are used to assist with analysis and design, providing significant advantages for clients by lowering project costs and reducing programmes timescales.

Our in-house activities include:

- Civil engineering and structural design
- Mechanical, electrical and power design
- CAD drafting and design including 3D modelling
- Independent design reviews

# OUR TEAM





## Our Team



**Marco Lombardelli**  
Managing Director



**Jim Cuell**  
Commercial Director



**Nick Turner**  
Projects Director



**David Vine**  
Principle Design Manager



**Para Pratheeb**  
Finance Manager



**Peter Coleman**  
Head of Compliance



**Henry Bonuah**  
HSE Manager



**Nick Ansell**  
Business Development  
Director



**Emma Russell**  
Commercial Manager



**Richard Horsted**  
Senior Design Manager

### WHO WE ARE

### OUR VALUES

### OUR SERVICES

- Civil, Structural Engineering and Building
- Mechanical, Electrical and Power
- Signalling
- Permanent Way
- Design and Consultancy

### OUR TEAM

### OUR PROJECTS

- Civil, Structural Engineering and Building
- Mechanical, Electrical and Power
- Signalling
- Permanent Way

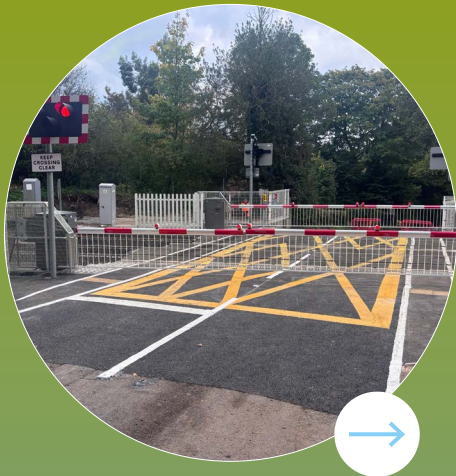
### GET IN TOUCH

# OUR PROJECTS





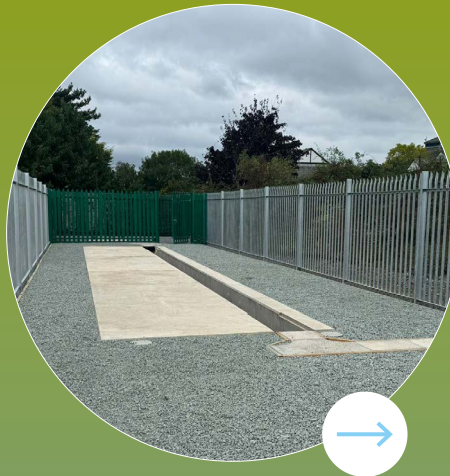
# Civil, Structural Engineering and Building



## North Downs Line Level Crossing Upgrades

*AtkinsRealis*

Global Rail Construction Limited (GRCL), has completed the North Downs Lines Level Crossing Upgrade. The design and build civil engineering scope covers 3 No Automatic Half Barrier (AHB) Level Crossings and 1 No Manually Controlled Obstacle Detected Barrier (MCB-CCTV) located within Network Rail's Wessex Route on behalf of Principal Contractor and Designer Atkins Realis...



## Cambridge Area Resignalling

*Alstom*

Global Rail Construction Limited (GRCL) were awarded a long-term programme of GRIP 6-8 railway civil engineering works, on behalf of valued client and Cambridge Resignalling Principal Contractor and Designer, Alstom. This sub-contract was secured by our UK team, following previous successful delivery of both GRIP 4 Surveys and GRIP 5 Advanced Civils Works.

Cambridge Resignalling is a condition led renewal, where a significant number of level crossings will be either renewed or modified as part of the project...



## Clacton Resignalling Scheme

*Atkins*

Global Rail Construction Limited has successfully completed a railway civil engineering design and build programme of works to support the upgrade the signalling systems in the Clacton-on-Sea area.

The Clacton Resignalling Projects' principle driver was the asset condition of the interlocking and associated track infrastructure at the throat of Clacton-on-Sea station.

Much of the signalling in the area dated back to 1958 and utilised a lever frame dating from 1891...

CONTINUE →

## WHO WE ARE

## OUR VALUES

## OUR SERVICES

- Civil, Structural Engineering and Building
- Mechanical, Electrical and Power
- Signalling
- Permanent Way
- Design and Consultancy

## OUR TEAM

## OUR PROJECTS

- Civil, Structural Engineering and Building
- Mechanical, Electrical and Power
- Signalling
- Permanent Way

## GET IN TOUCH

# Civil, Structural Engineering and Building



## Feltham Resignalling Project Phase 1

*Network Rail*

Global Rail Construction Limited delivered a compelling tender to Network Rail and were awarded the Principal Contractors role for the design and construction of the full civil engineering scope of works for the Feltham Resignalling Project Phase 1.

This phase of works forms part of a major Re-Signalling project to renew life expired signalling, telecoms and power assets for Network Rail, comprising the renewal of 538 Signalling Equivalent Units (SEUs)...

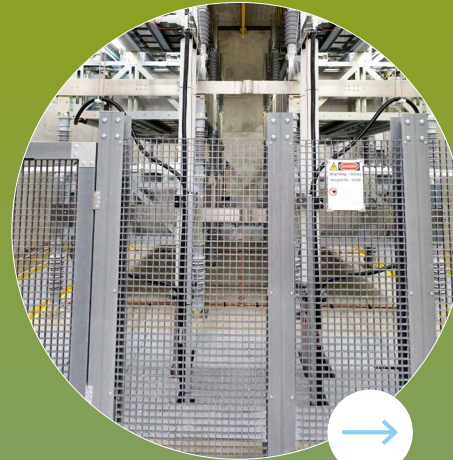


## Power Supply Upgrade Project Phase 3a

*Balfour Beatty Engineering Services*

Global Rail Construction Limited was awarded the design and construct contract associated with eight existing and one totally new substation at West Ham on the Metropolitan & District Line.

Having worked closely with the client at tender stage in support of their bid to LUL, we fully project managed all aspects of the design and construction of the civil and building elements of the work. The existing substations were: Campbell Road, East Ham, Heathway, Hornchurch, Plaistow and Upminster Bridge...



## Greenwich SVC - Enclosure Design and Build

*Siemens*

Global Rail Construction Limited has successfully completed the Design and Build of a Static VAR Compensator (SVC) Enclosure at Greenwich Generating Station. Under Power Upgrades Package 5C, Siemens, as Principal Contractor, appointed us to deliver the project, to house the new SVC within a disused turbine hall.

Access to the substation was via the Old Woolwich Road, which was challenging. An internal substation access road was used for all construction logistics and deliveries with minimum disruption...



PREVIOUS

## WHO WE ARE

## OUR VALUES

## OUR SERVICES

- Civil, Structural Engineering and Building
- Mechanical, Electrical and Power
- Signalling
- Permanent Way
- Design and Consultancy

## OUR TEAM

## OUR PROJECTS

- Civil, Structural Engineering and Building
- Mechanical, Electrical and Power
- Signalling
- Permanent Way

## GET IN TOUCH



# Mechanical, Electrical and Power



## **Sedgeberrow STW** *MWH Treatment Ltd*

This design and build electrical sub-contract for Sedgeberrow Sewage Treatment Works, on behalf of MWH Treatment Limited, a sister company from within RSK Group and reflects an exciting diversification from the UK rail industry, whereby GRCL was able to use its extensive Electrical and Mechanical design and engineering experience to support water management and treatment.

Our scope of work included full system electrical design, installation of cable containment, LV sub-main installation, telemetry all final circuits, NICEIC testing & certification and handover...



## **Barking Riverside Extension** *Volker Fitzpatrick & Morgan Sindall*

Global Rail Construction Limited were awarded the E&P and Ancillary Civil Engineering works for the joint venture of Volker Fitzpatrick and Morgan Sindall, as part of the construction of a new 4.5 km extension to the London Overground route on the Gospel Oak to Barking line for Transport for London, whilst also meeting the requirements for integration onto existing Network Rail infrastructure.

The full project scope provides a new strategic rail connection in East London and included the modification of the existing railway lines from Barking station ...



## **Felixstowe Capacity Upgrade Project** *Volker Fitzpatrick*

The Felixstowe Capacity Upgrade Project was a rail infrastructure programme for Network Rail, which involved the double tracking of sections of Permanent Way - over approximately 20 Kilometres between North Ipswich and Felixstowe - to increase capacity for the main freight route from the Port of Felixstowe.

The full project scope of works included upgrading five Level Crossings with new barrier controls and the installation of new Permanent Way, Signalling, Power and Telecoms for ...

## **WHO WE ARE**

## **OUR VALUES**

## **OUR SERVICES**

- Civil, Structural Engineering and Building
- Mechanical, Electrical and Power
- Signalling
- Permanent Way
- Design and Consultancy

## **OUR TEAM**

## **OUR PROJECTS**

- Civil, Structural Engineering and Building
- Mechanical, Electrical and Power
- Signalling
- Permanent Way

## **GET IN TOUCH**

# Signalling



## Ely to Peterborough (E2P)/ Anglia Signal Structures Modernisation

*AtkinsRéalis*

Global Rail Construction Limited (GRCL) has completed its Lineside Civils and Rail Systems sub-contract scope with Principal Contractor AtkinsRéalis and client Network Rail on the Ely to Peterborough (E2P)/Anglia Signal Structures Modernisation (A2SM) project.

The project covered the renewal of signals, including signal box and panel modifications, updating scheme plans, compact PSP installations and LV power upgrades...



## Feltham Resignalling Phase 5 *Atkins*

Following several months of efficient planning and effective delivery, Global Rail Construction Limited (GRCL) has successfully completed Feltham Resignalling Phase 5, Works Package 1a, covering Signalling Installations, on behalf of partner AtkinsRéalis for Network Rail Wessex Capital Delivery.

Feltham Phase 5 consisted of 3No interlocking areas, with 3No fringes to adjacent signalling control centres, and the renewal of 2No level crossings...



## Sunningdale Level Crossing Renewal

*Atkins*

Global Rail Construction Limited was awarded a multi-disciplinary contract for the S&T and Civil installation works for a new level crossing at Sunningdale, which falls within Feltham Resignalling Phase 2.

The overall Feltham Resignalling Project covers the renewal of all signalling assets. Its area is covered by seven scheme plans, with delivery broken down into six separate Phases that align approximately to the Signalling Scheme Plan boundaries, Feltham ASC Signallers panels and Wokingham Signal...

CONTINUE



## WHO WE ARE

## OUR VALUES

## OUR SERVICES

- Civil, Structural Engineering and Building
- Mechanical, Electrical and Power
- Signalling
- Permanent Way
- Design and Consultancy

## OUR TEAM

## OUR PROJECTS

- Civil, Structural Engineering and Building
- Mechanical, Electrical and Power
- Signalling
- Permanent Way

## GET IN TOUCH



# Signalling



## Thameslink Project

*BAM Nuttall*

Global Rail Construction Limited has secured a multi-disciplinary S&T, Civils and E&P Points Heating remedial contract at London Bridge, on behalf of BAM Nuttall for the Thameslink Project.

As part of the Thameslink Programme, the railway systems for London Bridge were completely remodelled to suit a new layout at the Station and provide substantial capacity improvements to enable amendments to the operational timetabling – this is referred to as the N421 Project...



## Signalling Installation Works Package 1- Feltham

*Atkins*

Global Rail Construction Limited (GRCL) successfully secured a significant Signalling installation sub-contract on behalf of its UK client Atkins. The contract is for Package 1 covering Phases 3 & 4 of the Feltham to Woking Resignalling Scheme and also includes Telecoms, Permanent Way, E&P and associated minor civils installation scopes of work.

The contract includes the provision of key engineering resources - using in house personnel - in accordance with the Engineering Management for Projects standard NR/L2/RSE/02009...



## Stroude, Rusham, Camberley & Chertsey Level Crossings

*Atkins*

Global Rail Construction Limited (GRCL) has completed the signalling and telecoms installation and associated civil construction works for the renewal of the Stroude, Rusham, Camberley and Chertsey Level Crossings.

The works were completed for long-term client Atkins Global, on behalf of Network Rail's Wessex Route. The completed crossings fall within the Feltham & Wokingham Resignalling project which comprises the renewal of all signalling assets controlled from Feltham Area Signalling Centre (ASC) and Wokingham Signal Box (SB)...

## WHO WE ARE

## OUR VALUES

## OUR SERVICES

- Civil, Structural Engineering and Building
- Mechanical, Electrical and Power
- Signalling
- Permanent Way
- Design and Consultancy

## OUR TEAM

## OUR PROJECTS

- Civil, Structural Engineering and Building
- Mechanical, Electrical and Power
- Signalling
- Permanent Way

## GET IN TOUCH



PREVIOUS

# Permanent Way



**Gibbets Lane - Plain Line  
Track Refurbishment Works**  
*Network Rail*

Global Rail Construction Limited were contracted by Network Rail Works Delivery Track for the plain line refurbishment of Gibbets Lane.

Global Rail Construction were engaged to support Network Rail to deliver this track package of works on the Wessex Route as Principal Contractor.

During Year 1 of CP6, Global Rail Construction has also successfully supported Works Delivery in the South East and Wessex with a discrete work bank which...



**Pratts Bridge PAN8 Sleeper  
Replacement Works**  
*Network Rail*

As part of the Sussex Region's ongoing maintenance and renewals programme, Network Rail Works Delivery Unit engaged with Global Rail Construction Limited as their Principal Contractor to deliver a critical sleeper renewal at Pratts Bridge near Eridge, East Sussex, 35m 1672yards.

The works required the removal of redundant 23nr PAN 8 sleepers and installation of new NRS1 base plated sleepers, ballast installation and tamping. The work was delivered as a package including planning, material...



**Redhill - Fixed Diamond  
Renewal and Sleeper  
Replacement Works**  
*Network Rail*

Global Rail Construction were engaged to deliver a fixed diamond replacement project to remove track defects, crippled joints and track quality issues.

The project demonstrated Global Rail Construction's ability to rapidly mobilise, undertake detailed planning in tight timescales and deliver a professional and quality project in collaboration with the Network Rail teams...

## WHO WE ARE

## OUR VALUES

## OUR SERVICES

- Civil, Structural Engineering and Building
- Mechanical, Electrical and Power
- Signalling
- Permanent Way
- Design and Consultancy

## OUR TEAM

## OUR PROJECTS

- Civil, Structural Engineering and Building
- Mechanical, Electrical and Power
- Signalling
- Permanent Way

## GET IN TOUCH




# GET IN TOUCH



[www.theglobalinfrastructuregroup.com](http://www.theglobalinfrastructuregroup.com)

Units 18 & 20  
The io Centre  
Hearle Way  
Hatfield  
Hertfordshire  
AL10 9EW

 +44 (0) 870 990 4074  
 [info@grcl.co.uk](mailto:info@grcl.co.uk)

